

# Site visit at SINTEF and NTNU's laboratories in Gløshaugen university campus June 20<sup>TH</sup> 2023

SINTEF and NTNU has more than 30 years experience in seaweed and seaweed biopolymer research. On the Site visit you will learn more about the ongoing activities at SINTEF and NTNU, and see the key laboratories used for this research.

15:00 – 15:20: Short introduction to the seaweed activities at SINTEF and NTNU

15:20 – 17:00: Laboratory tour at campus Gløshaugen



Pre processing



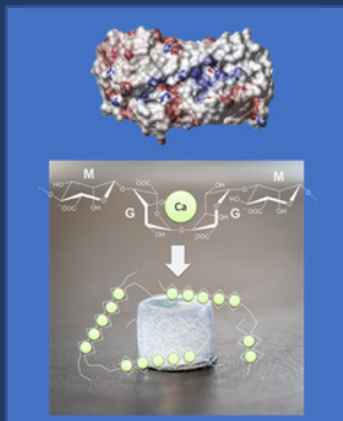
Processing



Fermentation



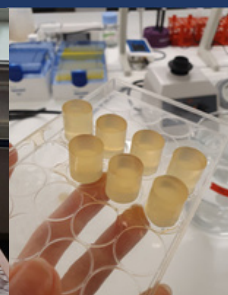
Fractionation



Modification



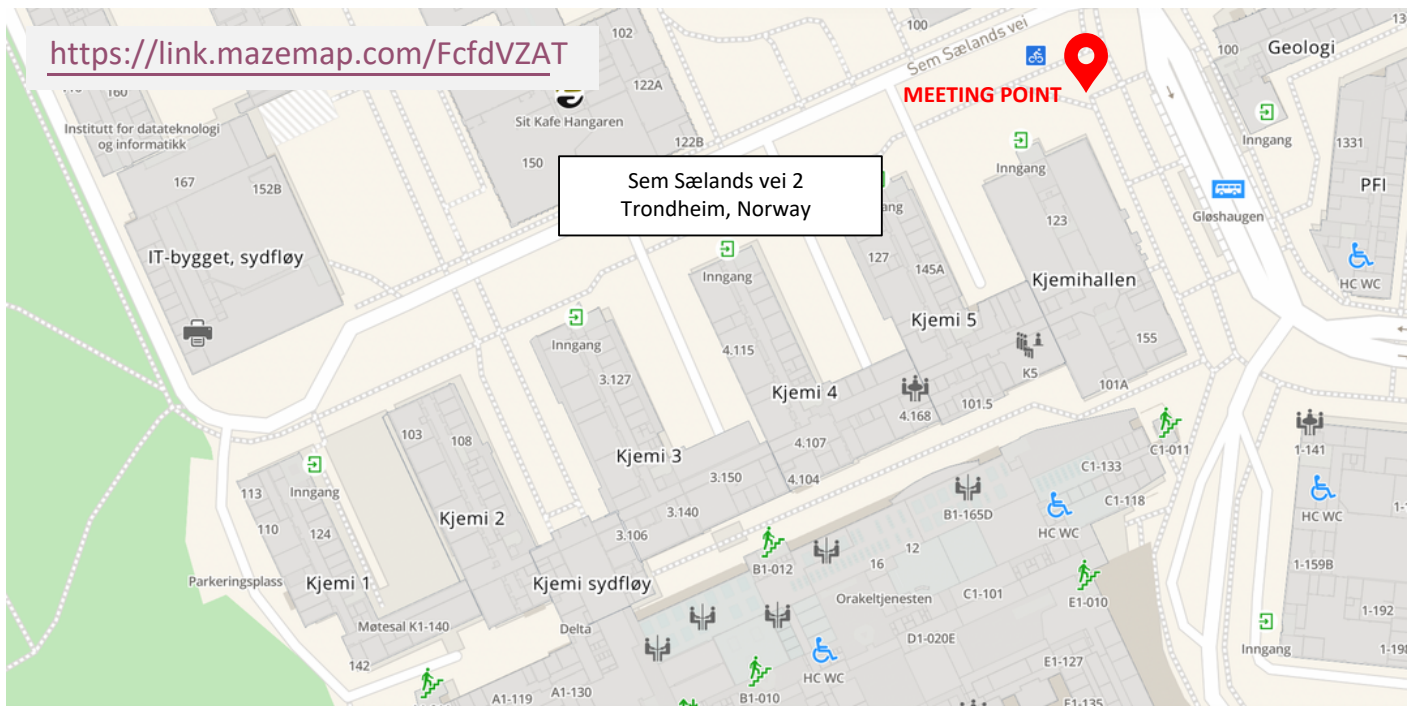
Characterisation



Products: Biomedical, food, feed, agriculture, biomaterials

Key laboratories (>2500 m<sup>2</sup>) : Seaweed biorefining, molecular biology, fermentation, high throughput screening, 3D printing, NMR, rheology, mass spectrometry

# Site visit at SINTEF and NTNU's laboratories in Gløshaugen university campus June 20<sup>TH</sup> 2023



## Contacts at SINTEF and NTNU

SINTEF: Øystein Arlov , [Oystein.arlov@sintef.no](mailto:Oystein.arlov@sintef.no), +47 99458449

NTNU: Finn L. Aachmann, [finn.l.aachmann@ntnu.no](mailto:finn.l.aachmann@ntnu.no), +47 97954859