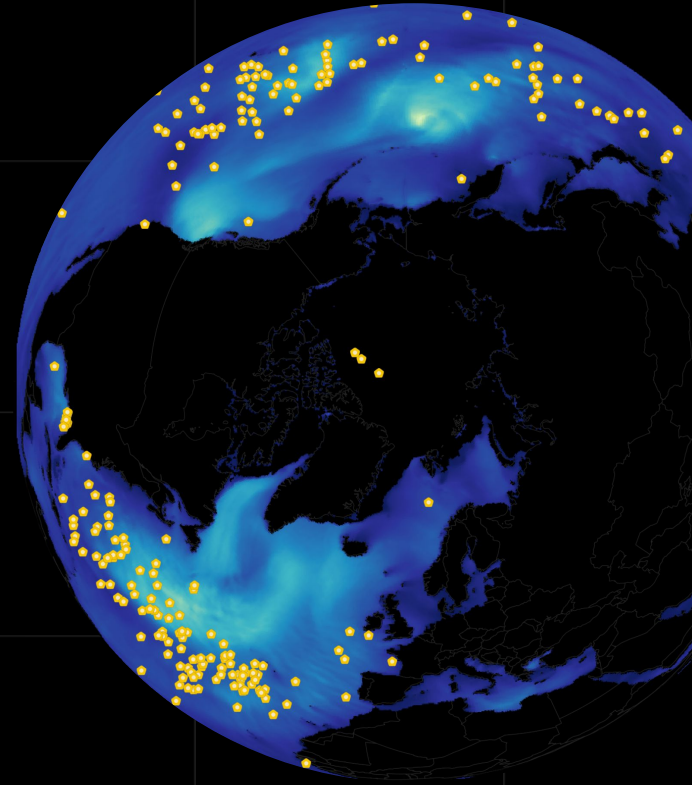
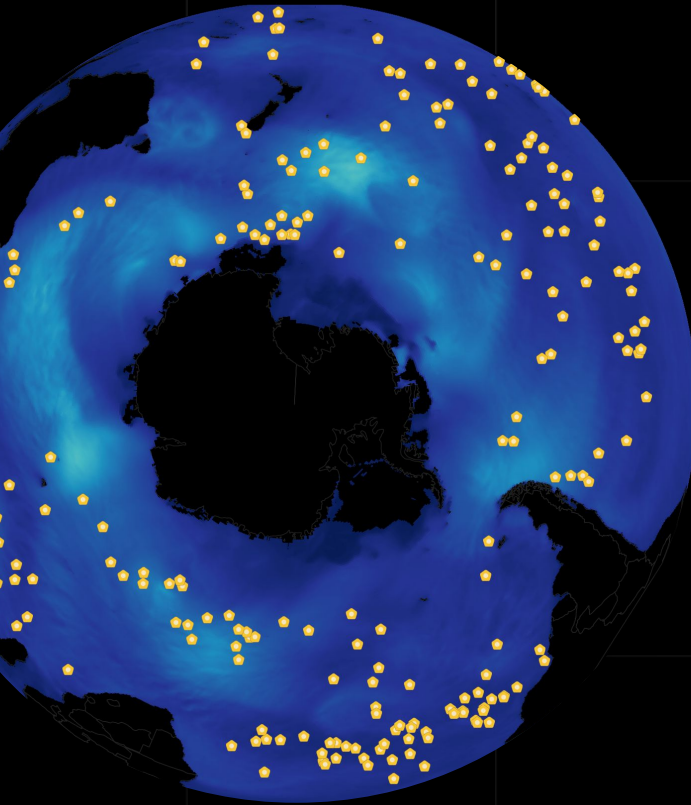


Sofar Ocean



Optimizing farm design
and operations with
distributed sensing



Ahoy!



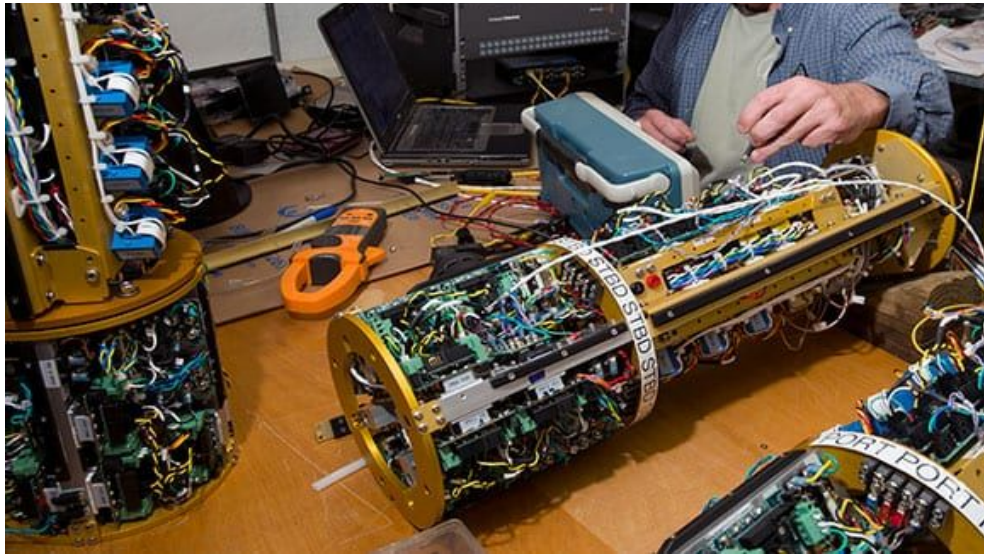
Dan Breyre

Fleet Product Lead
Sofar Ocean Technologies,
San Francisco CA



Sofar Ocean





Collecting ocean data
at scale is hard



Real-time ocean data at
scale for a fraction of the
cost and complexity



Spotter: Surface

Spotter buoys make direct observations of wave spectra, sea surface temperature, and atmospheric pressure. Spotters can be deployed free-drifting or anchored with conventional mooring.



Wave & Wave Spectra



Wind (Derived)



Sea Surface Temperature



Atmospheric Pressure



Spotter: Subsurface

Smart Mooring anchors the Spotter buoy to the seafloor and extends its data collection capabilities underwater, measuring subsurface temperature, water level, current, and more.



 Temperature



 Pressure
(Water Level)



 Current



 Development Kit



Empowering Ocean Industries

Mariculture



Offshore
Renewables



Coastal
Engineering



Conservation
& Research



Government
& Defense



RUNNING TIDE



Mariculture learnings



2: Operating

Real-time sea conditions inform support operations, resilience to events and ideal in-water activities.

Sea State

Instant Data Access

Cost-Effective

Satellite & Cellular Connectivity

Events

Easy to Deploy & Manage

Modular Platform

Activities

Track growth rate

Estimate and optimize harvest

SPOT-1135

(ip)

New data received an hour ago

🌊 2.13 ft @ 34.1 s ▶ 🌬️ 3.58 mph ◀

WAVE HEIGHT	DIRECTION	PERIOD	SPREAD
MEAN 🌊 2.13 ft	274 ° ▶	10.7 s	76 °
PEAK	267 ° ▶	34.1 s	57 °
WIND SPEED 🌬️	DIRECTION	SURFACE	
3.58 mph	68° ◀	glassy	

📍 45.110617°, -66.822400° 🗺️

🕒 04/08/2024 14:35:00 PDT



SETTINGS



HISTORICAL DATA



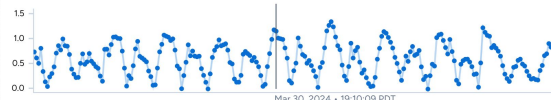
Sensors



Current: Direction | Speed | Speed Deviation

Current Meter

57° - 1.02 MPH - 0.04 MPH



Future

Lots to be excited about but want what is interesting to you?

On Prem

Hosted models

Actionable insights

Water quality

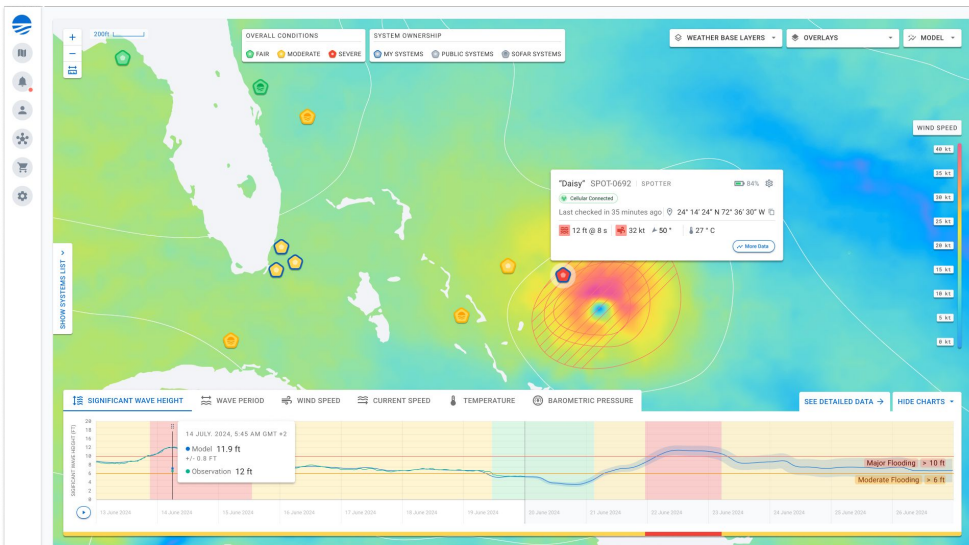
Stable long dwell

New observations (pCO2, PAR...)

Forecasting

Solar Powered

Rugged Design



QUESTIONS?

Dan Breyre

Fleet Product Lead

dan.breyre@sofarocean.com

www.sofarocean.com

Access our global Spotter
sensor weather network:

weather.sofarocean.com

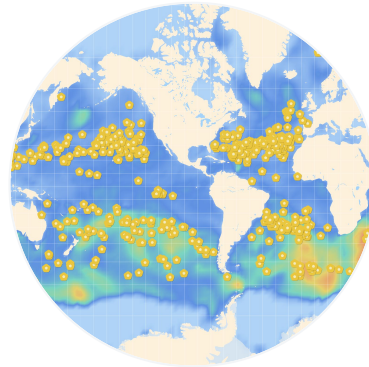


Scaling Real-Time Ocean Data for Impact



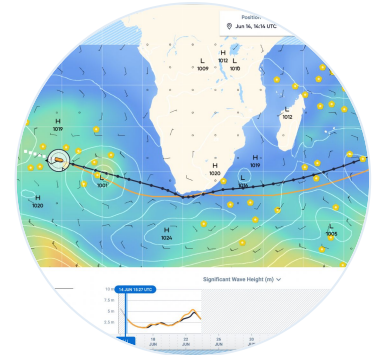
Spotter Platform

Extensible ocean sensing platform deployed globally



Weather

Weather forecasts powered by real-time data assimilation



Wayfinder

Voyage safety and guidance with the best weather forecasts

