



**HATCH**  
Innovation Services

**the fish site**

ALASKA  
**MARICULTURE**  
CLUSTER



# Alaska Mariculture Insights



A person wearing green waders and a watch is handling a large, dark, mesh fishing net in shallow water. The net is draped over a wooden frame. The background shows a rocky shoreline with some seaweed.

## Vision

A climate-smart, truly sustainable and just (sea)food transition.

## Mission

To catalyze an innovative (sea)food industry and scale impactful businesses through knowledge, investment and ecosystem building.



HATCH

# The Hatch Universe



## Investments Unit

Existing portfolio of +60 investments across the aquaculture and alternative seafood space.



## Consulting Unit - [Hatch Innovation Services](#)

10 industry professionals with 70+ years combined experience providing industry stakeholders with innovation scouting, market research, DD support, strategy advice, etc.



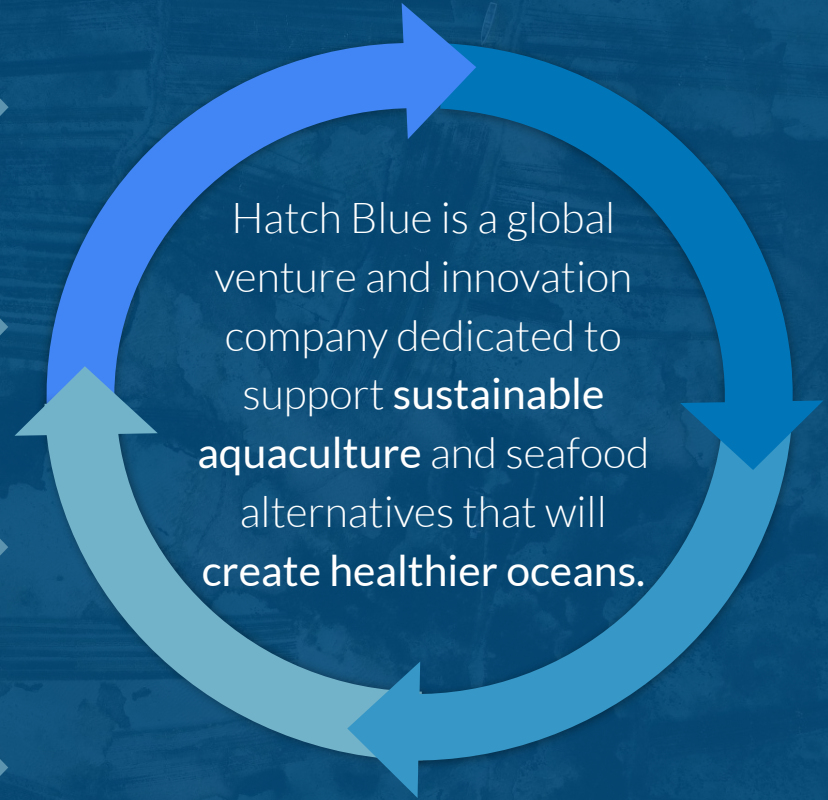
## [Startup Incubation](#) & [Acceleration Programs](#)

Running 4-6 innovation workshops annually for +60 startups and growth-stage companies in several countries. Receiving more than +350 aquaculture-specific applications per year.



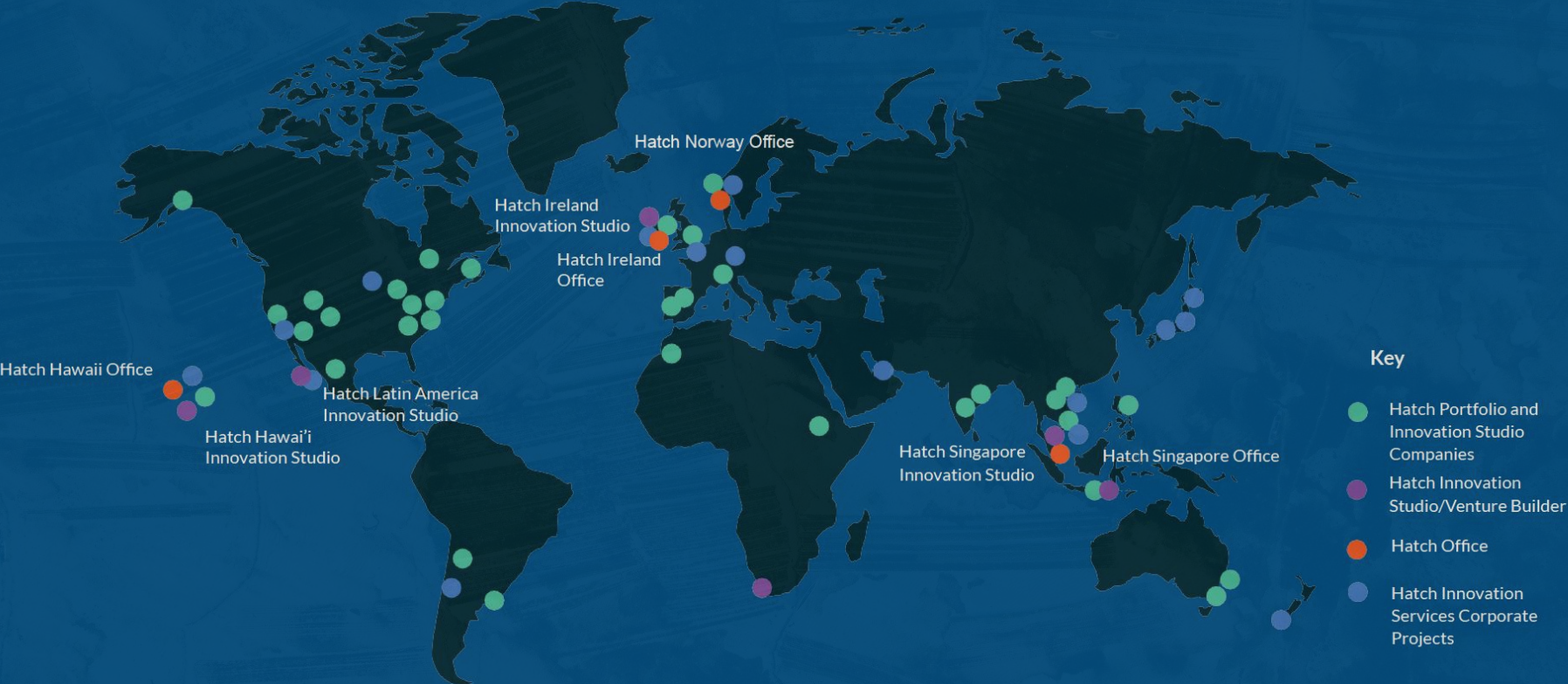
## Media Platform - [The Fish Site](#)

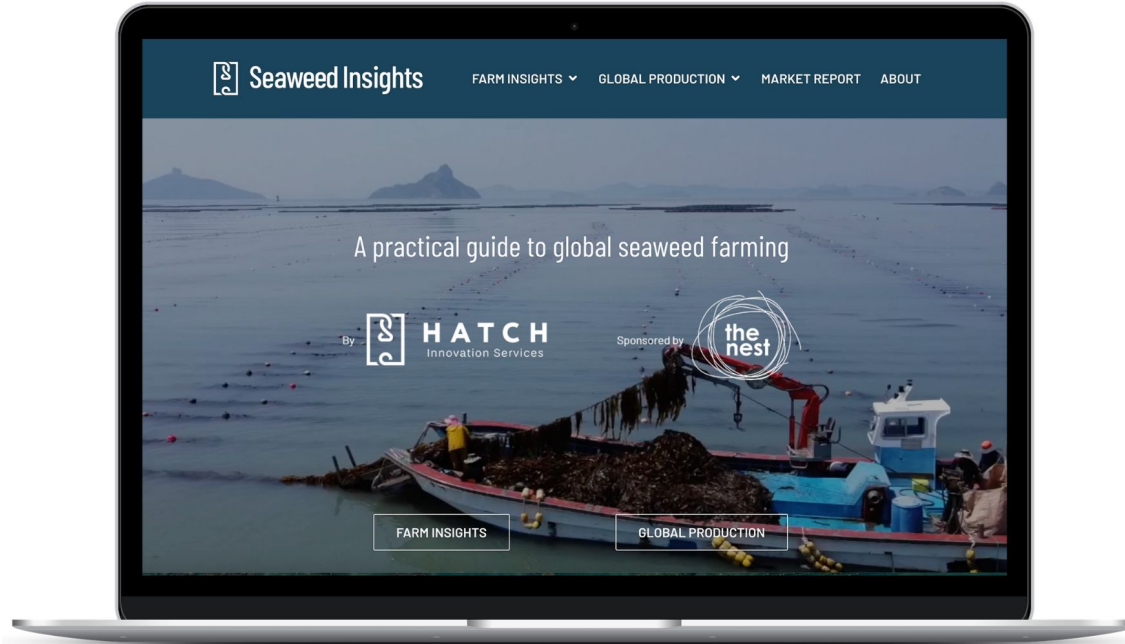
The largest global digital aquaculture-news platform, in-house intelligence, and [media agency](#).





# Our Global Footprint





- Full suite of farm level data from **100+ farm visits**
- Covering **6 countries** that produce 98% of global seaweed volume
- **5 species groups** that account for 97% of global production
- **10 Supply chain deep dives** for main current market applications



OVERVIEW



EUCHEUMATOIDS



SACCHARINA



UNDARIA



PYROPIA



GRACILARIA



SOUTH EAST CONFERENCE & HATCH INNOVATION SERVICES PRESENTS

# Alaska Mariculture Insights

Discover the thriving potential of Alaska's seaweed and oyster industries, where sustainable practices and local innovation are shaping a bright future for coastal communities. Join us in exploring the opportunities that lie beneath the surface.

Beta Version\*

Exclusive Access for  
Seagriculture  
Participants



*\*We welcome and would appreciate your feedback by September 26th  
nitzan@hatch.blue*

## The HATCH team covered multiple regions and visited close to 30 locations across Alaska

### Regions Visited (in order of visit dates)

 Ketchikan  Prince of Wales Island  Juneau  Hoonah  Seward  Homer  Kodiak

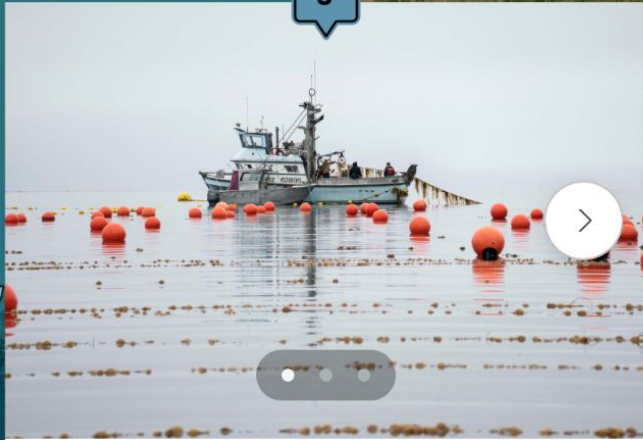
*\*An additional visit is planned to cover Prince William Sound in 2025*



A two weeks field trip meeting inspiring farmers and seeing the technologies and product developments being applied in hatcheries, farms, and processing facilities

Map: Hatch Innovation Services • Source: HATCH Field Study 2024 • Created with Datawrapper





## Seagrove Kelp

Visit date: 2024 May 06

Region: Ketchikan







## Seaweed Insights

With pristine waters and a rich maritime ecosystem, Alaska offers an ideal setting for cultivating seaweed and producing high-quality, low-carbon products. With the state's abundant natural resources, 33,000 miles of available coastline, and strong backwinds from federal and state organizations, there is a tremendous opportunity to further establish mariculture as an integral part of the state's seafood industry.

### IN THIS SECTION

[Permitting](#)[Site Selection](#)[Farm Design](#)[Hatchery](#)[Nursery](#)[Grow out](#)[Processing](#)[Sales](#)[The Farmer](#)[Future Outlook](#)

## FARMER'S KEY CHALLENGES

### Farm challenges

- Labor shortage and costs
- Consistency of high-quality seed production
- Lack of local processing facilities (drying, biorefineries)
- Scalability

### Farming wishlist

- Market maturity and demand
- Commercial scale drying capacities
- Advanced local biorefineries
- Economic viability - attracting more companies and investments



## INNOVATION OPPORTUNITIES

- Localized Processing & Scalable Biorefineries
- Market Development
- Cooperative Models
- Leveraging Existing Infrastructure & Workforce
- Knowledge Sharing





## Oyster Insights

With its vast expanses of prime waters and ideal conditions for aquaculture, Alaska presents a promising environment for oyster farming to expand. From a global perspective, this sector is still in its early stages, with innovative farmers leading the way in developing efficient and sustainable farming methods. By utilizing technology and proven farming techniques, such as surface culture systems, and processing automation, Alaska oyster farmers aim to increase production capacity and maintain consistency in quality.

### IN THIS SECTION

[Permitting](#)[Site Selection](#)[Farm Design](#)[Hatchery](#)[Nursery](#)[Grow out](#)[Processing](#)[Sales](#)[The Farmer](#)[Future Outlook](#)

1. One of the most advanced support ecosystems
2. Strong research - industry collaboration
3. Indigenous leadership and communities involvement
4. Entrepreneurial ingenuity navigating Alaska's unique conditions
5. Synergy with established fishing industry
6. Diversification and integration strategies
7. **Passionate and extremely skilled human capital**





# Premiering new documentaries: Meet Alaska's Mariculture champions



**Seaweed Documentary**

**Oyster Documentary**





Beta Version\*

Exclusive Access for  
Seagriculture  
Participants

SOUTH EAST CONFERENCE & HATCH INNOVATION SERVICES PRESENTS

# Alaska Mariculture Insights

Discover the thriving potential of Alaska's seaweed and oyster industries, where sustainable practices and local innovation are shaping a bright future for coastal communities. Join us in exploring the opportunities that lie beneath the surface.



*\*We welcome and would appreciate your feedback by September 26th*



Thank you for your attention!



**HATCH**  
Innovation Services

Aquaculture insights, senior advisory and consulting services



Hatch Innovation Services and The Fish Site team:



Southeast Conference team:



## Images to use:

- From Miro
- [https://drive.google.com/drive/folders/1V4NihgvDLofQEU3kNvG\\_ZitKQLfuOboK](https://drive.google.com/drive/folders/1V4NihgvDLofQEU3kNvG_ZitKQLfuOboK)



## Oyster Industry

- Established reputation for premium product
- Supply still trying to meet demand
- Trends towards co-ops and associations to mitigate processing and sales challenges
- Improved and scales Nursery (FLUPSY) capacity in different production hubs
- Workforce shortage in general and for remote location in particular
- Working continuously to improve production and implementing new production systems
- Working towards in-state seed supply

**\*Human Capital\***