



# SAP Best Practices for SAP S/4HANA Cloud

## 2108

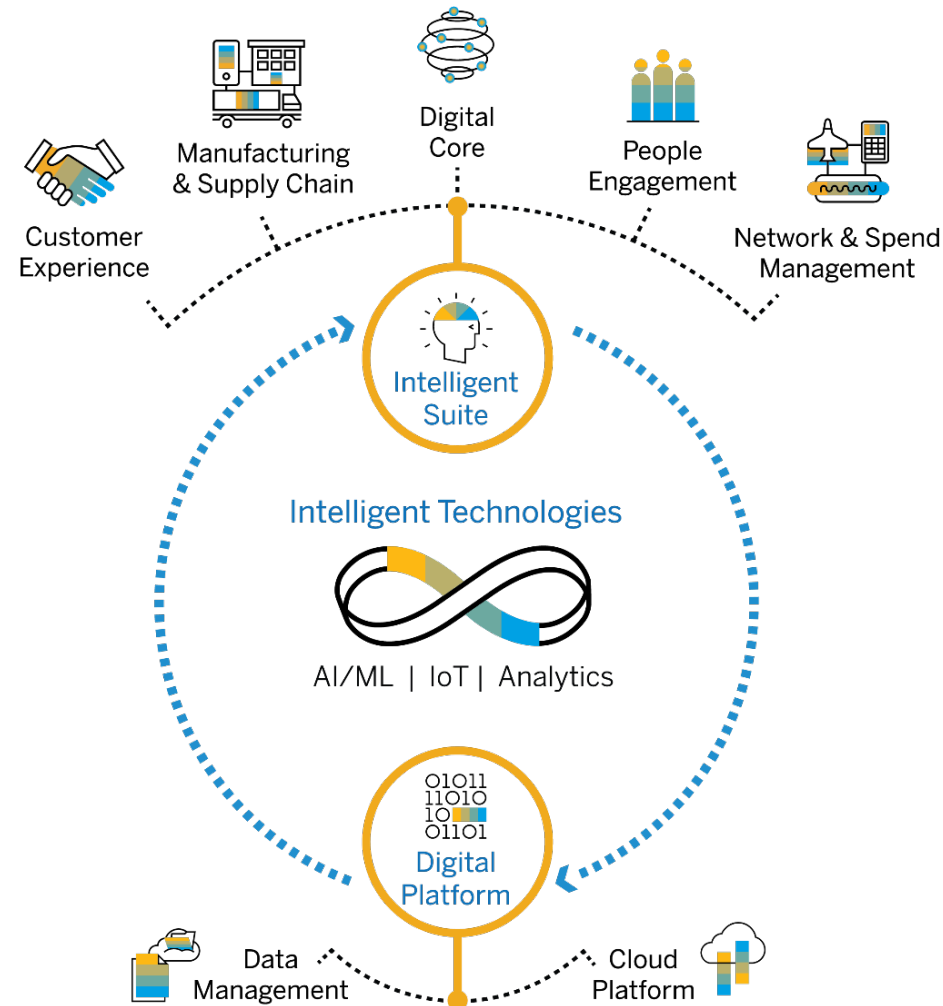
PUBLIC

# Agenda

- Overview
- Scope
- More information

# The Intelligent Enterprise Framework

THE INTELLIGENT ENTERPRISE  
Features 4 KEY PILLARS



- 1 Digital Age User Experience
- 2 Intelligent Automation
- 3 New Business Models
- 4 End-to-end Analytics & Real-time Steering

# SAP Best Practices for SAP S/4HANA Cloud

- Accelerate and simplify the adoption of SAP S/4HANA Cloud for faster time to value, using best practice business processes.

## Value Proposition

---

Accelerate and simplify the adoption of SAP S/4HANA Cloud for faster time to value, using best practice business processes. Many of the SAP Best Practices for SAP S/4HANA Cloud allow you to run in an intercompany scenario (on the same system), or even in two-tier landscapes with your existing on-premise ERP System.

The SAP Best Practices for SAP S/4HANA Cloud provide preconfigured content for core business processes in Finance, Human Resources, Sourcing and Procurement, Manufacturing, Professional Services, R&D/Engineering, Sales, Service and Supply Chain. These processes are supported by SAP Fiori for a role-specific, intuitive, and simple user experience. The built-in digital assistant SAP CoPilot offers context-sensitive assistance with daily tasks. To complement the business processes, embedded analytics, and SAP Fiori overview pages add real-time insight into data.

In addition, SAP S/4HANA Cloud offers SAP Best Practices for integration to other cloud solutions, such as SAP SuccessFactors Employee Central, Concur, Fieldglass, and Ariba. There is also out-of-the-box integration to many of the latest SAP Cloud Platform applications.

SAP Best Practices for Data Migration complements the foundation and offers customers a nondisruptive, simplified transition to SAP S/4HANA Cloud.

The guided configuration allows a simpler configuration, automated testing, and content life-cycle management to support agile adoption of continuous innovation even after go-live.

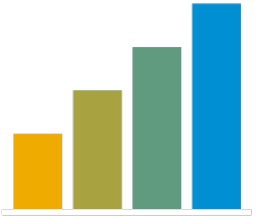
## Business Benefits

---

- Reduce cost of operations by using standardized processes
- Manage multiple geographies, divisions, subsidiaries, and ledgers with global and country- or region-specific content
- Drive operational efficiencies and comply with regulations
- Empower business and IT users equally with guided configuration
- Allow a first-hand experience of SAP S/4HANA Cloud with instant guided trials
- Update and change customer specific configuration using SAP S/4HANA life-cycle management tools

# SAP Best Practices for SAP S/4HANA Cloud

Scope - 2108



29

New Scope  
Items

~130

Changed Scope  
Items

~565

Complete Scope

## New Scope Items in:

**Finance:** Advance Compliance Reporting for Belgium (5P9), Advance Compliance Reporting for Germany (5O6), Event-Based Revenue Recognition – Subscription Billing (5DQ), Event-Based Revenue Recognition – Subscription Billing - IFRS (5DR), Event-Based Revenue Recognition - Subscription Billing - US GAAP (5DS), Intelligent Intercompany Reconciliation (4LG), Intrastat Processing for Belgium (5PA), Intrastat Processing for Germany (5OL), Stock Management (5OD), Stock Management - Group Ledger IFRS (5OE), Stock Management - Group Ledger US GAAP (5OF), VAT Tax Calculation and Reporting for Belgium (5IS)

**Manufacturing:** Production Capacity Evaluation and Leveling - Consumer Products (5OI), Quality Management in Discrete Manufacturing - Consumer Products (5HK ), Subcontracting with Ariba Network (5I2)

**Asset Management:** Product Footprint Management (5IM)

**R&D/Engineering:** Supplier Compliance in the Value Chain (5OJ)

**Sales:** Sell from Stock – Consumer Products (5HL)

**Service:** Warranty Claim Management – Supplier Recovery Processing (5HR)

**Sourcing and Procurement:** Automated Invoice Settlement – Automotive (5L6), Direct Material Sourcing (4RD), Preferred Supplier List (4RI)

**Supply Chain:** Determination of Geocoding, Distances and Durations (46P), Manual Transportation Planning – Inbound (5OS), Manual Transportation Planning – Outbound (4MO), Warehouse Internal Inspections (5OK)

## Solutions for Specific Industries:

**Automotive:** Digital Vehicle (5ON)

**Oil and Gas:** Field Logistics Planning and Execution – Direct Procurement (5OM), Revenue Accounting - Oil and Gas Production (5NM)



# SAP Best Practices for SAP S/4HANA Cloud

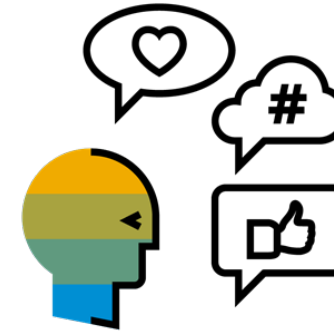
## Localization Coverage - 2108



43

Local Versions

Australia, Austria, Belgium, Brazil, Canada, China, Czechia, Denmark, Finland, France, Germany, Hong Kong (China), Hungary, India, Indonesia, Ireland, Italy, Japan, Luxembourg, Malaysia, Mexico, Netherlands, New Zealand, Norway, Philippines, Poland, Portugal, Romania, Russia, Saudi Arabia, Singapore, South Africa, South Korea, Slovakia, Spain, Sweden, Switzerland, Taiwan (China), Thailand, Turkey, United Arab Emirates, United Kingdom, United States



27

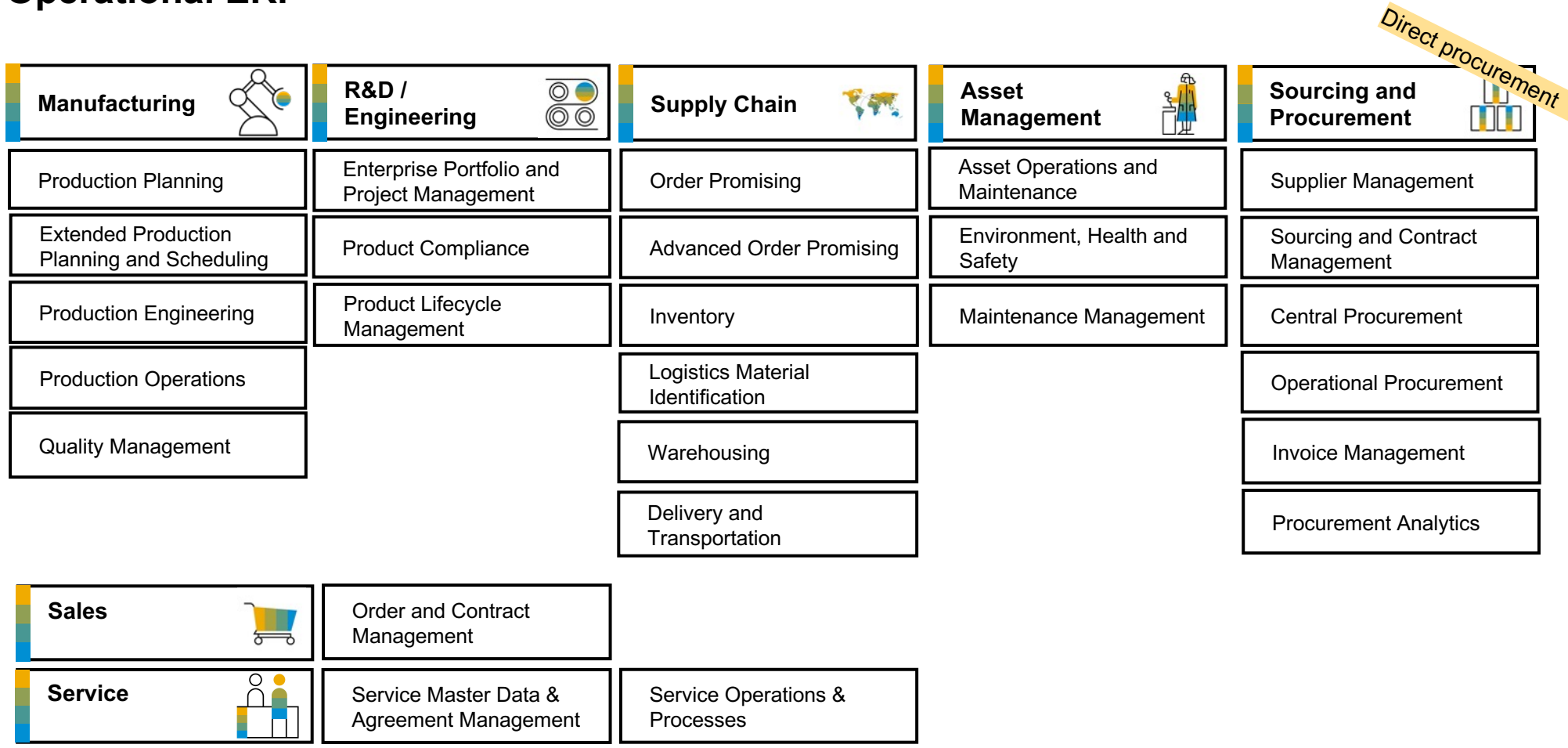
Languages

Arabic, Bahasa (Malaysia), Chinese (simplified), Chinese (traditional), Czech, Danish, Dutch, English, Finnish, French, German, **Greek**, **Hebrew**, Hungarian, Italian, Japanese, Korean, Norwegian, Polish, Portuguese, Romanian, Russian, Slovak, Spanish, Swedish, Thai, Turkish

# SAP Best Practices for SAP S/4HANA Cloud

## Business Area in Line of Business

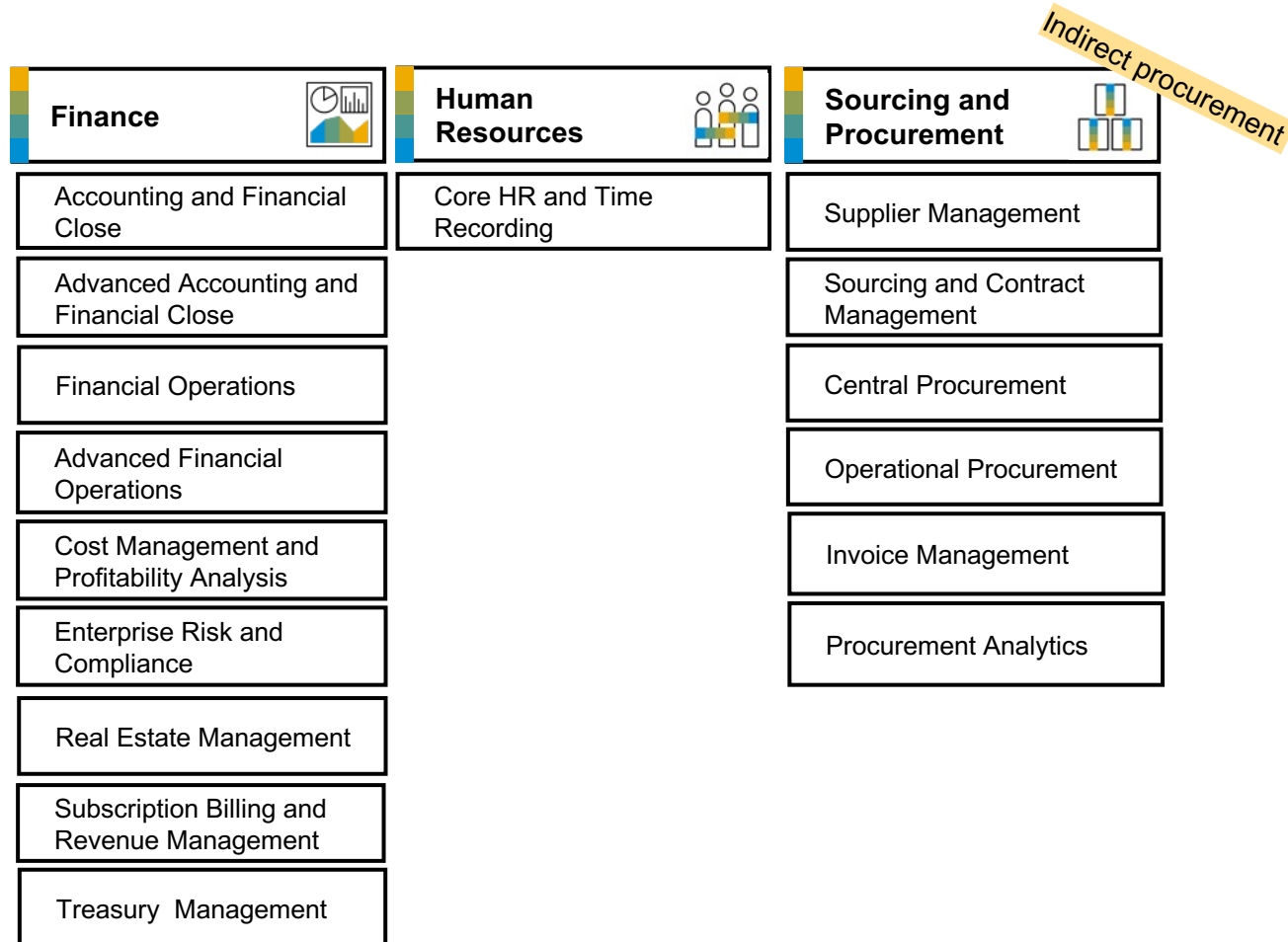
### Operational ERP



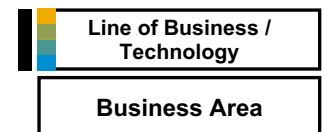
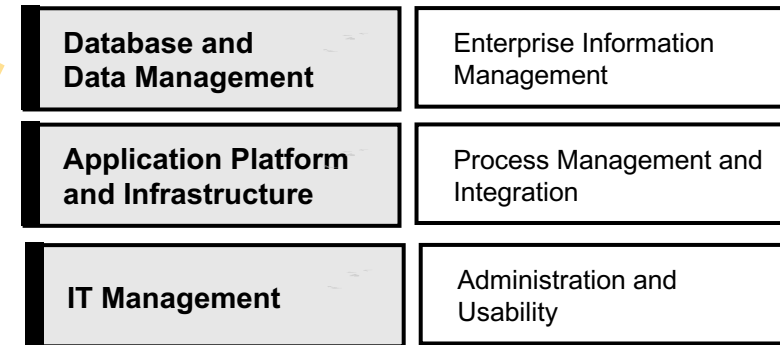
# SAP Best Practices for SAP S/4HANA Cloud

Business Area in Line of Business / Technology

## Administrative ERP



## Real-time foundation





# SAP Best Practices for SAP S/4HANA Cloud

## Business Area Industry

### Solutions for Specific Industries



# Agenda

- Overview
- Scope
- More information

**Line of Business**


**Business Area**

**Scope Item**

# Scope Item Information on SAP Best Practices Explorer

	Scope Item	SID	Status	Short Description
Accounting and Financial Close	Accounting and Financial Close	J58	Changed	This scope item provides a comprehensive overview of external accounting and accounts.
Accounting and Financial Close	Accounting and Financial Close - Group Ledger IFRS	1GA	Technical Upgrade	This scope item provides additional scope for Accounting and Financial Close (J58). It provides ledger-specific operation postings and ledger-specific period-end closing steps.
Accounting and Financial Close	Accounting and Financial Close - Group Ledger US GAAP	2VA	Technical Upgrade	This process is an additional optional scope item to Accounting and Financial Close (J58). It provides ledger-specific operation postings and ledger-specific period-end closing steps.
Accounting and Financial Close	Accounting and Financial Close - Incoming Sales Orders	2FD	Technical Upgrade	This process is an additional optional scope item to Accounting and Financial Close (J58). It provides ledger-specific operation postings and ledger-specific period-end closing steps.

Accounting and Financial Close (J58)



Description:  
This scope item provides a comprehensive overview of external accounting and accounts.

Version:  
Germany, SAP S/4HANA Cloud

Language:  
English

Direct link to scope item:  
<https://rapid.sap.com/bp/scopeltems/J58>

Overview

Country/Region Relevance

Details

Used In

The central task of general ledger accounting is providing a comprehensive overview of external accounting and accounts. By recording all business transactions, including primary postings and settlements from internal accounting, in a system that is fully integrated with all the other operational areas of a company, you ensure accuracy and completeness for accounting data.

General Ledger Accounting serves as a complete record of all business transactions providing a centralized, up-to-date reference for the rendering of accounts. Actual individual transactions are reviewed with real-time processing, displaying the original documents, line items, and transaction figures at various levels (such as account information, journals, totals, transaction figures, and balance sheets).

This process describes all required period-end closing steps, related to performing local period-end closing and steps that are identical for local and parallel ledger.

Business Benefits

- Recording all business transactions ensures complete and accurate accounting data

Key Process Flows


- Post general ledger account documents
- Display the document journal
- Display GL balances (list)
- Perform recurring entries
- Maintain accounts with automatic and manual clearing
- Perform day-end closing
- Perform month-end closing
- Perform year-end closing

COUNTRY/REGION RELEVANCE

>


This scope item version is relevant for the following countries or regions:

DETAILS




Process flow

A representation of the business process to show how the software works as standard.




Test script

A procedure for testing the activated system according to the defined business process.



Process flow (BPMN2)

A representation of the business process to show how the software works as standard, for displaying and editing in process modeling applications.



Task tutorials

Recorded tutorials demonstrating the process

USED IN

Select Scope Item ID in the PPT to access direct link to the scope item on SAP Best Practices Explorer (BPX)

- Scope Item Name and ID
- Short Description
- Long Description
- Business Benefits
- Key Process Flows
- Where Used


# What's New Viewer

SAP

What's New Viewer - SAP S/4HANA Cloud

What's New Viewer - SAP S/4HANA Cloud

Get a complete overview of the new, changed and deleted features and functions in the most recent versions of SAP S/4HANA Cloud.



Search

Line of Business Solution Area Type SAP S/4HANA Cloud 1908

455 entries

?

Select columns

Line of Business	Solution Area	Solution Capability	Title	Short Description	Type	Scope Item	Application Component	Available As Of	Functional Localization
Asset Management	Maintenance Operations		Find Maintenance Plans: Viewing End Date for Scheduling	With this feature, you can display validity data of the respective maintenance plan in the <b>Find Maintenance Plans</b> app. You can display the new fields <b>End Date for Scheduling</b> and <b>Remaining Schedule Days</b> as table columns. Moreover, for performance-based single cycle plans and strategy plans, you can also display the new fields <b>End Counter for Scheduling</b> , <b>Remaining Counter</b> and <b>Counter Unit</b> as table columns.	New	BJ2	PM	SAP S/4HANA Cloud 1908	n/a
<a href="#">See More</a>									
Asset Management	Maintenance Operations	Maintenance Execution	Mass Time Confirmations: Post Immediately	With this feature, you can now post time confirmations immediately in background jobs.	New	BH1, BH2, BJ2	PM	SAP S/4HANA Cloud 1908	n/a
<a href="#">See More</a>									
Asset Management	Maintenance Operations	Maintenance Execution (SAP S/4HANA)	Maintenance Order: Planning Lean Services	With this feature, you can plan and procure lean services for maintenance order operations and suboperations in the <b>Create Maintenance Order</b> app and in the <b>Change Maintenance Order</b> app. You can add free text lines in the new <b>Services</b> section or enter a product with a product type whose product type group indicates that this product is a procured service.	New	BH1, BH2, BJ2	PM-WOC	SAP S/4HANA Cloud 1908	n/a
<a href="#">See More</a>									
Asset Management	Maintenance Operations	Maintenance Planning and Scheduling (SAP S/4HANA)	Maintenance Plan: Specifying End Date and End Counter	With this feature, you can specify an end date for scheduling when processing maintenance plans with the <b>Create Maintenance Plan</b> app or with the <b>Change Maintenance Plan</b> app. For performance-based single cycle plans and strategy plans, you can also define an end counter. The system considers these dates during the scheduling process. When the end date or end counter are due, the last maintenance call retains the status <b>Hold</b> so that no further maintenance call objects are created for this maintenance plan.	New	BJ2	PM	SAP S/4HANA Cloud 1908	n/a
<a href="#">See More</a>									
Cross Applications			Issuance of Electronic Tax Invoices: Process Statuses	To provide clearer, more comprehensive process status information about tax invoice	Changed	BD9	CA-GTF-CSC	SAP S/4HANA Cloud	Localized for South

You can find a complete overview of **new, changed and deleted** features and functions in the [SAP S/4HANA Cloud – What's New Viewer](#)

# SAP Best Practices for SAP S/4HANA Cloud

## Cloud Capabilities in Line of Business: Finance

### Finance

Accounting and Financial Close

Advanced Accounting and Financial Close

Financial Operations

Advanced Financial Operations

Cost Management and Profitability Analysis

Enterprise Risk and Compliance

Real Estate Management

Subscription Billing and Revenue Management

Treasury Management





# Finance

## Accounting and Financial Close (I)

Business Area	Scope Item	SID	Status	Short Description
Accounting and Financial Close	Accounting and Financial Close	<a href="#">J58</a>	Changed	This scope item provides a comprehensive overview of external accounting and accounts.
Accounting and Financial Close	Accounting and Financial Close - Group Ledger IFRS	<a href="#">1GA</a>	Upgraded	This scope item provides additional scope for Accounting and Financial Close (J58). It provides ledger-specific operation postings and ledger-specific period-end closing steps.
Accounting and Financial Close	Accounting and Financial Close - Group Ledger US GAAP	<a href="#">2VA</a>	Upgraded	This process is an additional optional scope item to Accounting and Financial Close (J58). It provides ledger-specific operation postings and ledger-specific period-end closing steps.
Accounting and Financial Close	Accounting for Incoming Sales Orders	<a href="#">2FD</a>	Upgraded	This scope item provides a report of all incoming sales orders for a given fiscal period. It also provides the capability to display prediction journal entries along with actuals, and to analyze the expected results at period/quarter end.
Accounting and Financial Close	Actual Costing	<a href="#">33Q</a>	Changed	This scope item enables actual costing for material inventory without cost component split functionality. This supports legal requirements in some countries/regions (such as Brazil).
Accounting and Financial Close	Asset Accounting	<a href="#">J62</a>	Upgraded	Asset accounting is a subsidiary ledger of the general ledger and is used to manage and document fixed asset transactions in detail.
Accounting and Financial Close	Asset Accounting - Group Ledger IFRS	<a href="#">1GB</a>	Upgraded	This process is an additional scope item to Asset Accounting (J62). It provides ledger-specific transactions and reports for IFRS.
Accounting and Financial Close	Asset Accounting - Group Ledger US GAAP	<a href="#">33F</a>	Upgraded	This process is an additional scope item to Asset Accounting (J62). It provides ledger-specific transactions and reports for US GAAP.
Accounting and Financial Close	Asset Retirement Obligation – IFRS	<a href="#">5IT</a>	Upgraded	The Asset Retirement Obligation application provides functions to process and support the financial accounting requirements associated with the costs of the asset retirement of long-lived assets.
Accounting and Financial Close	Asset Retirement Obligation - US GAAP	<a href="#">56E</a>	Upgraded	The Asset Retirement Obligation application provides functions to process and support the financial accounting requirements associated with the costs of the asset retirement of long-lived assets.
Accounting and Financial Close	Asset Under Construction	<a href="#">BFH</a>	Upgraded	This process describes the necessary steps that must be performed to acquire assets for constructed assets, starting with the acquisition of an asset and its monitoring until construction is finished. This can take place within a single period or over more than one period.

# Finance

## Accounting and Financial Close (II)

Business Area	Scope Item	SID	Status	Short Description
Accounting and Financial Close	Asset Under Construction - Group Ledger IFRS	<a href="#">1GF</a>	Upgraded	This process is an additional scope item to Asset Accounting (BFH). It provides ledger-specific transactions. This scope item describes the necessary steps to acquire assets for constructed assets in group ledger IFRS.
Accounting and Financial Close	Asset Under Construction - Group Ledger US GAAP	<a href="#">33G</a>	Upgraded	This process is an additional scope item to Asset Accounting (BFH). It provides ledger-specific transactions. This scope item describes the necessary steps to acquire assets for constructed assets in group ledger US GAAP.
Accounting and Financial Close	Cash Journal	<a href="#">1GO</a>	Changed	The FI Cash Journal is a type of subsidiary ledger for Financial Accounting used for managing a company's cash transactions. It can perform posting to G/L accounts, supplier accounts, and customer accounts.
Accounting and Financial Close	Contract-Based Revenue Recognition – IFRS	<a href="#">3KK</a>	Changed	This scope item supports revenue recognition according to IFRS 15 for Contract Accounting and Invoicing.
Accounting and Financial Close	Contract-Based Revenue Recognition - US GAAP	<a href="#">3VS</a>	Changed	This scope item supports revenue recognition according to ASC 606 for Contract Accounting and Invoicing.
Accounting and Financial Close	Control Credit for Taxes on Assets	<a href="#">54D</a>	Upgraded	This scope item covers a set of tax benefits related to the acquisition of assets, applicable ONLY for Brazil.
Accounting and Financial Close	Event-Based Revenue Recognition - Project-Based Sales	<a href="#">4GQ</a>	Changed	The scope item supports revenue recognition for enterprise projects with sales order integration. Revenues and costs are matched in the same period based on the assigned revenue recognition method.
Accounting and Financial Close	Event-Based Revenue Recognition - Project-Based Sales – IFRS	<a href="#">4GR</a>	Changed	The scope item supports revenue recognition for enterprise projects with sales order integration, using group ledger IFRS functionality. Revenues and costs are matched in the same period based on the assigned revenue recognition method.
Accounting and Financial Close	Event-Based Revenue Recognition - Project-Based Sales - US GAAP	<a href="#">4GS</a>	Changed	The scope item supports revenue recognition for enterprise projects with sales order integration, using group ledger US-GAAP functionality. Revenues and costs are matched in the same period based on the assigned revenue recognition method.
Accounting and Financial Close	Event-Based Revenue Recognition - Project-Based Services	<a href="#">1IL</a>	Changed	Event-based Revenue Recognition calculates and posts revenues and cost adjustments to projects. Revenue recognition is either cost-based or time-based depending on project type.
Accounting and Financial Close	Event-Based Revenue Recognition - Project-Based Services - IFRS	<a href="#">1P0</a>	Changed	Event-based Revenue Recognition calculates and posts real-time revenue and cost adjustment for professional service for fixed price, time and material, and periodic service projects using parallel ledger functionality.

# Finance

## Accounting and Financial Close (III)

Business Area	Scope Item	SID	Status	Short Description
Accounting and Financial Close	Event-Based Revenue Recognition - Project-Based Services - US GAAP	<a href="#">33O</a>	Changed	Event-based Revenue Recognition calculates and posts real-time revenue and cost adjustment for professional services for fixed price, time and material, and periodic service projects, using US GAAP Ledger functionality.
Accounting and Financial Close	Event-Based Revenue Recognition - Sell from Stock	<a href="#">1K2</a>	Changed	Event-based Revenue Recognition posts revenues and cost adjustments for sales orders in real-time when goods issue is posted for sale from stock. Revenue is calculated based on quantity, and costs are matched with revenues (posted as accrued revenue).
Accounting and Financial Close	Event-Based Revenue Recognition - Sell from Stock - IFRS	<a href="#">33M</a>	Changed	Event-based Revenue Recognition posts revenues and cost adjustments for sales orders in real-time when a goods issue is posted for sale from stock, using Parallel Ledger functionality.
Accounting and Financial Close	Event-Based Revenue Recognition - Sell from Stock - US GAAP	<a href="#">33J</a>	Changed	Event-based Revenue Recognition posts revenues and cost adjustments for sales orders in real-time when a goods issue is posted for sale from stock, using US GAAP Ledger functionality.
Accounting and Financial Close	Event-Based Revenue Recognition - Service Documents	<a href="#">3M3</a>	Changed	The scope item depicts the integration of event-based revenue recognition with service contract management and service order management. Revenue recognition postings are generated simultaneously with transactions of service documents and can be easily analyzed.
Accounting and Financial Close	Event-Based Revenue Recognition - Service Documents - IFRS	<a href="#">3M4</a>	Changed	The scope item depicts the integration of event-based revenue recognition with service contract management and service order management. Revenue recognition postings are generated simultaneously with transactions of service documents and can be easily analyzed.
Accounting and Financial Close	Event-Based Revenue Recognition - Service Documents - US GAAP	<a href="#">3M5</a>	Changed	The scope item depicts the integration of event-based revenue recognition with service contract management and service order management. Revenue recognition postings are generated simultaneously with transactions of service documents and can be easily analyzed.
Accounting and Financial Close	Event-Based Revenue Recognition - Subscription Billing	<a href="#">5DQ</a>	New	The scope item depicts the integration of event-based revenue recognition with SAP Subscription Billing. Revenue recognition postings are generated from transactions referring to provider contract items which represent subscriptions. These postings can be easily analyzed.
Accounting and Financial Close	Event-Based Revenue Recognition - Subscription Billing - IFRS	<a href="#">5DR</a>	New	The scope item depicts the integration of event-based revenue recognition with SAP Subscription Billing. Revenue recognition postings are generated from transactions referring to provider contract items that represent subscriptions. These postings can be easily analyzed.

# Finance

## Accounting and Financial Close (IV)

Business Area	Scope Item	SID	Status	Short Description
Accounting and Financial Close	Event-Based Revenue Recognition - Subscription Billing - US GAAP	<a href="#">5DS</a>	New	The scope item depicts the integration of event-based revenue recognition with SAP Subscription Billing. Revenue recognition postings are generated from transactions referring to provider contract items which represent subscriptions. The postings can be easily analyzed.
Accounting and Financial Close	External Tax Audit	<a href="#">20O</a>	Upgraded	The External Tax Audit functions enable External Tax Auditors to conduct detailed audits of a company's accounts using Auditor Direct Access.
Accounting and Financial Close	External Tax Calculation	<a href="#">4Q2</a>	Upgraded	For the US, there are two delivered tax solutions, internal and external. This scope item focuses on the external solution, which enables integration to an external tax partner for calculating sales and use taxes along with determining tax jurisdictions.
Accounting and Financial Close	Financial Planning and Analysis	<a href="#">2FM</a>	Changed	Leverage a unique Financial Statement Version (FSV) to support financial planning and analysis.
Accounting and Financial Close	General Indirect Tax in the Canary Islands	<a href="#">3SS</a>	Upgraded	This scope item describes the process for a standard sales process with a customer. The business process covers order creation through the clearing of a customer account after the receipt of payment applicable for the Canary Islands territory.
Accounting and Financial Close	General Ledger Allocation Cycle	<a href="#">1GI</a>	Upgraded	During the business transaction based on the profit center mapping to the segment, the expenditure and income are captured under the business segment or common profit center that cannot be allocated. After doing the profit center distribution, the costs are transferred to the correct profit centers and the correct segment is derived from the profit center.
Accounting and Financial Close	Integrated Financial Planning	<a href="#">4RC</a>	Changed	This scope item delivers financial planning functions to support cost management and profitability analysis.
Accounting and Financial Close	Intelligent Intercompany Reconciliation	<a href="#">4LG</a>	New	Machine Learning using SAP Business Technology Platform can be used to expand the functionality of the SAP Intercompany matching and reconciliation used with SAP S/4HANA. This scope item addresses the set up and configuration of machine learning for intercompany matching and reconciliation.
Accounting and Financial Close	Intercompany Asset Transfer within Same Country	<a href="#">1IH</a>	Upgraded	This scope item describes the necessary steps to perform intercompany asset transfers between company codes. For the individual companies, an intercompany transfer represents a retirement for the one company and an acquisition for the other.
Accounting and Financial Close	Intercompany Financial Posting and Payment on Behalf - Domestic	<a href="#">1GP</a>	Upgraded	This scope item enables the customer to post the journal entries for general ledger across company codes. In addition, one company code can pay invoices on behalf of another company code (central payment).

# Finance

## Accounting and Financial Close (V)

Business Area	Scope Item	SID	Status	Short Description
Accounting and Financial Close	Intercompany Reconciliation Process	<a href="#">40Y</a>	Upgraded	This scope item covers the process of periodic controlling for accounting documents that describe the accounting transactions within a corporate group.
Accounting and Financial Close	Inventory Valuation for Year-End Closing	<a href="#">BEJ</a>	Changed	Balance sheet valuation in Inventory Accounting enables you to evaluate your inventories at the end of reporting periods according to international accounting principles (such as IAS or U.S. GAAP).
Accounting and Financial Close	Machine Learning for Accruals Management	<a href="#">3NF</a>	Upgraded	Machine Learning helps you to improve the accuracy and timeliness of your purchase order accruals.
Accounting and Financial Close	Machine Learning for Monitoring of Goods and Invoice Receipts	<a href="#">2ZS</a>	Upgraded	Machine Learning using SAP Business Technology Platform expands the functionality of the SAP Goods Receipt/Invoice Receipt Monitor used with SAP S/4HANA. This scope item addresses the setup and configuration of machine learning for the GR/IR Monitor.
Accounting and Financial Close	Managing Material Price Changes and Inventory Values	<a href="#">1ZT</a>	Changed	This scope item provides users with an example of a process description that they can use to change material prices, mark prices for change, and release prices for material valuation.
Accounting and Financial Close	Monitoring of Goods and Invoice Receipts	<a href="#">2V7</a>	Changed	The Goods Receipt/Invoice Receipt Monitor is a tool to make status proposals depending on a specific PO item's situation. The service can be used standalone or seamlessly integrated in the GR/IR Monitor.
Accounting and Financial Close	Organizational Flexibility in Financial Accounting	<a href="#">4PG</a>	Changed	The flexible organizational change tool allows you to divide, combine, and replace profit centers. A change to the profit center structure requires a change to the assignment of profit centers to objects.
Accounting and Financial Close	Period-End Closing - Maintenance Orders	<a href="#">BF7</a>	Upgraded	This scope item covers the period-end closing for maintenance orders.
Accounting and Financial Close	Period-End Closing - Plant	<a href="#">BEI</a>	Upgraded	This process ensures that all costs incurred during the manufacturing process are assigned to production activities.
Accounting and Financial Close	Period-End Closing - Projects	<a href="#">BNA</a>	Changed	This scope item supports the settlement of costs that are collected in projects temporarily, to one or more receivers as part of period-end processing for projects.
Accounting and Financial Close	Predictive Accounting for Service Contract Management	<a href="#">4V7</a>	Upgraded	This scope item provides a more comprehensive overview of all service contracts including future postings for recognized, deferred, and accrued revenues resulting from the billing plan and regardless of their billing status.

# Finance

## Accounting and Financial Close (VI)

Business Area	Scope Item	SID	Status	Short Description
Accounting and Financial Close	Predictive Accounting for Travel and Expense Management	<a href="#">4Q0</a>	Upgraded	Use the integration between Travel and Expense Management in SAP Concur and Finance in SAP S/4HANA Cloud to forecast the impact of your employees' business trips on the budget planned and allocated to cost centers or projects.
Accounting and Financial Close	Purchase Order Accruals	<a href="#">2VB</a>	Changed	This process supports automatic calculation, review, approval, posting and analysis of purchase order accruals.
Accounting and Financial Close	SAP Fiori Analytical Apps for Asset Accounting in Finance	<a href="#">2QY</a>	Upgraded	This scope item provides overview pages for the Asset Accounting functionality.
Accounting and Financial Close	SAP Fiori Analytical Apps for G/L Accounting in Finance	<a href="#">BGC</a>	Upgraded	This scope item provides overview pages for the General Ledger Accounting functionality.
Accounting and Financial Close	Subsidiary Integration of SAP S/4HANA Cloud to Central Finance	<a href="#">1W4</a>	Changed	Integrate your subsidiary running on SAP S/4HANA Cloud to your corporate Central Finance in SAP S/4HANA to centralize financial processes.



# Finance

## Advanced Accounting and Financial Close (I)

Business Area	Scope Item	SID	Status	Short Description
Advanced Accounting and Financial Close	Advance Compliance Reporting	<a href="#">1J2</a>	Upgraded	Advanced Compliance Reporting enables you to configure, generate, analyze, and electronically submit statutory reports that contain indirect taxes, such as value-added tax.
Advanced Accounting and Financial Close	Advance Compliance Reporting for Belgium	<a href="#">5P9</a>	<b>New</b>	Advanced Compliance Reporting enables you to configure, generate, analyze, and electronically submit statutory reports that contain indirect taxes, such as value-added tax. This scope item covers company codes outside of Belgium with tax registration in Belgium.
Advanced Accounting and Financial Close	Advance Compliance Reporting for Germany	<a href="#">5O6</a>	<b>New</b>	Advance Compliance Reporting for Germany enables you to configure, generate, analyze, and electronically submit statutory reports that contain indirect taxes, such as value-added tax for Germany.
Advanced Accounting and Financial Close	Advanced Financial Closing	<a href="#">2V8</a>	Upgraded	As the cloud-based offering, Advanced Financial Closing supports the planning, automating, processing, monitoring, and analysis of tasks in financial close for the entities of the customer group.
Advanced Accounting and Financial Close	Financial Task List Management Integration	<a href="#">4HG</a>	Upgraded	This scope item provides the inbound service communication scenario in SAP S/4HANA Cloud to enable the connectivity with the advanced financial closing solution.
Advanced Accounting and Financial Close	Group Account Preparation for Financial Consolidation	<a href="#">3AF</a>	Upgraded	This scope item provides group account preparation for external consolidation or reporting purpose.
Advanced Accounting and Financial Close	Group Reporting - Data from External Systems	<a href="#">2U6</a>	Upgraded	This scope item enables the integration between SAP S/4HANA Cloud Group Reporting and the external systems.
Advanced Accounting and Financial Close	Group Reporting - Data from SAP Group Reporting Data Collection	<a href="#">287</a>	Upgraded	This scope item enables the integration between financial group reporting in SAP S/4HANA and SAP Group Reporting Data Collection (deployed on the SAP BTP).
Advanced Accounting and Financial Close	Group Reporting - Financial Consolidation	<a href="#">1SG</a>	Changed	This scope item provides statutory financial consolidation capabilities for SAP S/4HANA customers.
Advanced Accounting and Financial Close	Group Reporting - Matrix Consolidation	<a href="#">3LX</a>	Upgraded	This scope item supports consolidation for managerial organizational entities such as profit center and business segment. This functionality includes inter-unit eliminations and flexible management consolidation reports generated at report run-time.
Advanced Accounting and Financial Close	Group Reporting - Plan Consolidation	<a href="#">28B</a>	Upgraded	This scope item allows the consolidation of plan data.

# Finance

## Advanced Accounting and Financial Close (II)

Business Area	Scope Item	SID	Status	Short Description
Advanced Accounting and Financial Close	Group Reporting - Predictive Consolidation	<a href="#">3JP</a>	Upgraded	This scope item enables integration of predictive accounting documents to SAP S/4HANA Group Reporting and subsequent consolidation of these documents to produce actual/predictive comparisons.
Advanced Accounting and Financial Close	Group Reporting – Consolidation with Multiple Group Currencies	<a href="#">4VB</a>	Upgraded	This scope item provides the group financial statement with multiple currencies.
Advanced Accounting and Financial Close	Integration of SAP S/4HANA and SAP Cloud for Real Estate	<a href="#">4X3</a>	Upgraded	This scope item enables the connection of master data in SAP S/4HANA to a location within SAP Cloud for Real Estate.
Advanced Accounting and Financial Close	Intercompany Process for Sublease Accounting	<a href="#">2O9</a>	Upgraded	This scope item allows the company to assign or give certain rights to the sublessee – an affiliate company – that are held under the terms of the own original lease with the landlord.
Advanced Accounting and Financial Close	Joint Venture Accounting	<a href="#">3F7</a>	Upgraded	This scope item enables you to run the main processes of joint venture accounting.
Advanced Accounting and Financial Close	Lease-In Accounting	<a href="#">1T6</a>	Upgraded	Lease contracts describe contractual agreements between two partners: the lessor and the lessee. This scope item helps you standardize and automate your lease-in credit contract management activities, like creating and managing new contracts, setting helpful reminder rules, and running reports that help you save time and effort and make more informed lease management decisions.
Advanced Accounting and Financial Close	Lease-In Accounting - Group Ledger IFRS	<a href="#">21P</a>	Upgraded	Lease contracts describe contractual agreements between two partners: the lessor and the lessee. This scope item helps you standardize and automate your lease-in credit contract management activities, like creating and managing new contracts, setting helpful reminder rules, and running reports that help you save time and effort and make more informed lease management decisions.
Advanced Accounting and Financial Close	Lease-In Accounting - Group Ledger US GAAP	<a href="#">34N</a>	Upgraded	This scope item helps you standardize and automate your lease-in credit contract management activities, saving you time and effort and letting you make more informed lease management decisions.
Advanced Accounting and Financial Close	Lease-Out Accounting	<a href="#">21Q</a>	Upgraded	This scope item helps you standardize and automate your lease-out debit contract management activities, saving you time and effort and making more informed lease management decisions.
Advanced Accounting and Financial Close	Lease-Out for Sublease Accounting	<a href="#">2SB</a>	Upgraded	This scope item supports the lease-out scenario in a sublease contract.
Advanced Accounting and Financial Close	Lease-Out for Sublease Accounting - Group Ledger IFRS	<a href="#">2SA</a>	Upgraded	This scope item supports the lease-out scenario in a sublease contract.

# Finance

## Advanced Accounting and Financial Close (III)

Business Area	Scope Item	SID	Status	Short Description
Advanced Accounting and Financial Close	Lease-Out for Sublease Accounting - Group Ledger US GAAP	<a href="#">34O</a>	Upgraded	This scope item helps you standardize and automate your lease-out debit contract management activities, helping you save time and effort and make more informed lease management decisions.
Advanced Accounting and Financial Close	Sales-Based Rent	<a href="#">3F4</a>	Upgraded	This component provides functions for settling sales-based or percentage-based rental agreements for a real estate contract based on the sales reports of the tenant.
Advanced Accounting and Financial Close	Service Contract	<a href="#">21R</a>	Upgraded	Lease contracts describe contractual agreements between two partners: the lessor and the lessee. This scope item helps you standardize and automate your lease service credit contract management activities, like creating and managing new contracts, setting helpful reminder rules, and running reports that help you save time and effort and make more informed lease management decisions.

# Finance

## Financial Operations (I)

Business Area	Scope Item	SID	Status	Short Description
Financial Operations	Accounts Payable	<a href="#">J60</a>	Changed	This scope item describes managing your open payable invoices that are automatically created from purchasing processes.
Financial Operations	Accounts Receivable	<a href="#">J59</a>	Changed	This scope item enables you to manage your open receivables invoices that are automatically created from sales processes.
Financial Operations	Advanced Bank Statement Automation	<a href="#">4X8</a>	Changed	The scope item provides automated and rule-based bank statement reprocessing and proposes reprocessing rules based on past posting actions.
Financial Operations	Automated Dynamic Discounts with SAP Ariba Discount Management	<a href="#">19O</a>	Upgraded	Boost efficiency in accounts payable and cash management as you integrate and automate payments. With dynamic discount capabilities on the Ariba Network, you can pay your suppliers early and save cash.
Financial Operations	Automated Invoice Settlement	<a href="#">2LH</a>	Upgraded	This scope item can be used to procure goods and enables the user to settle goods receipts directly, without an invoice from a supplier. The system posts the invoice document automatically based on the data in the purchase order and goods receipt.
Financial Operations	Automotive Supply to Customer - Inventory Management	<a href="#">55F</a>	Changed	This scope item describes an end-to-end process for automotive suppliers with focus on scheduling agreements for sales, Just-In-Time processing, scheduling agreements for purchasing, repetitive manufacturing, delivery, and self-billing (optional).
Financial Operations	Bill of Exchange	<a href="#">1WQ</a>	Upgraded	This scope item utilizes the payment method bill of exchange for incoming or outgoing payments.
Financial Operations	Cash Application Integration	<a href="#">1MV</a>	Changed	The SAP Cash Application Solution uses machine learning technology to increase the automation in the invoice-matching process by providing the prediction results to SAP S/4HANA.
Financial Operations	Complementary Invoice – Pricing	<a href="#">2UT</a>	Upgraded	A subsequent credit or debit exists when an additional invoice is received for a transaction that was previously invoiced.
Financial Operations	Customer Payments	<a href="#">1S0</a>	Upgraded	The scope item includes the integration between SAP S/4HANA Cloud and the customer payments solution, which handles electronic bill presentment and payment for SAP Business Technology Platform (SAP BTP).
Financial Operations	Digital Payments	<a href="#">1S2</a>	Upgraded	The scope item enables the integration between SAP S/4HANA Cloud and SAP digital payments, which allows you to use credit card payment methods in SAP S/4HANA for incoming payments.

# Finance

## Financial Operations (II)

Business Area	Scope Item	SID	Status	Short Description
Financial Operations	Direct Debit	<a href="#">19M</a>	Upgraded	In this scope item, you can use the direct debit payment method in the Single Euro Payments Area (SEPA) to collect payments from your customers in Euro and certain non-SEPA countries / regions to collect payments from your customers in your local currency.
Financial Operations	Electronic Documents	<a href="#">2RP</a>	Upgraded	In this scope item, you can send electronic documents to the Brazilian government systems to get authorization for different processes, such as authorization and cancellation.
Financial Operations	External Customer Payments	<a href="#">2M0</a>	Upgraded	This scope item enables the payment method external payment, which can be used with the help of external billing systems.
Financial Operations	External Digital Payments	<a href="#">2LZ</a>	Upgraded	The scope item enables the integration between SAP S/4HANA Cloud and SAP digital payments. With this, you can use external payment methods in SAP S/4HANA for incoming payments.
Financial Operations	Fixed Asset Tax Credit	<a href="#">2UP</a>	Upgraded	This scenario covers some of the Brazilian legal requirements for Fixed Assets Tax Credit (Imposto sobre Circulacao de Mercadorias e Servicos Impuesto (ICMS)) while performing a purchase process of an asset.
Financial Operations	Integration of Payment Advice with Buyers and Suppliers	<a href="#">2MB</a>	Upgraded	Exchange Payment Advice messages with your buyer and supplier using a set of robust SOAP APIs.
Financial Operations	Integration of SAP S/4HANA Cloud to SAP Tax Declaration Framework	<a href="#">3JK</a>	Upgraded	This scope item provides real-time data updates from SAP S/4HANA Cloud to the SAP Tax Declaration Framework to provide legal reporting for Brazil.
Financial Operations	Integration with External Tax Calculation Engines	<a href="#">43D</a>	Upgraded	This scope item enables business transactions, such as sales orders or purchase orders, to use external engines for tax calculation.
Financial Operations	Invoice, Taxes and Complementary Postings	<a href="#">1J5</a>	Upgraded	This scope item describes the crucial, manual steps required to meet legal document requirements for Brazil when providing financial reporting to the Brazilian tax authorities.
Financial Operations	Lockbox	<a href="#">1JT</a>	Changed	This scope item provides the end-to-end process of lockbox.
Financial Operations	Produce and Sell Standard Products - Inventory Management	<a href="#">54U</a>	Changed	This scope item enables production planning and execution of serialized finished goods in make-to-stock scenarios, procurement of required components, as well as sales order processing, quality inspection and invoicing.

# Finance

## Financial Operations (III)

Business Area	Scope Item	SID	Status	Short Description
Financial Operations	Produce and Sell Standard Products - Warehouse Managed	<a href="#">54V</a>	Changed	This scope item enables production planning and execution of finished goods in a make-to-stock scenario, procurement of required components, as well as sales order processing, quality inspection, and invoicing, focusing on warehouse-managed stock.
Financial Operations	Provisioning of Overdue Receivables	<a href="#">2PD</a>	Changed	During financial statement preparation, open overdue customer items are valued. In addition to the foreign currency valuation, you can also calculate a flat-rate individual value adjustment for unsecured or overdue trade receivables. For this periodic task, you can schedule a valuation run.
Financial Operations	Royalties Settlement for Sales	<a href="#">55I</a>	Upgraded	This scope item covers the subsequent settlement of royalty conditions for sales transactions agreed on with licensors.
Financial Operations	SAP Fiori Analytical Apps for Financial Accounting	<a href="#">2JB</a>	Upgraded	This scope item provides overview pages for the Accounts Payable and Accounts Receivable functionality.
Financial Operations	Subsidiary Integration of SAP S/4HANA Cloud to Central Finance	<a href="#">1W4</a>	Changed	Integrate your subsidiary running on SAP S/4HANA Cloud to your corporate Central Finance in SAP S/4HANA to centralize financial processes.
Financial Operations	Supplier Financing	<a href="#">4AV</a>	Upgraded	In Supplier Financing, a company in the role of a buyer organizes a factoring for its suppliers.
Financial Operations	Travel Expense Processing with SAP Concur Expense Professional	<a href="#">1M1</a>	Changed	Cloud-based travel and expense solutions enable users to plan trips and create expense reports. This information is typically transferred to financial systems for posting and integration with SAP S/4HANA Cloud.



# Finance

## Advanced Financial Operations

Business Area	Scope Item	SID	Status	Short Description
Advanced Financial Operations	Accounting and Financial Close	<a href="#">J58</a>	Changed	This scope item provides a comprehensive overview of external accounting and accounts.
Advanced Financial Operations	Advanced Credit Management	<a href="#">1QM</a>	Changed	In this scope item, you manage and calculate credit limits for customers automatically based on formulas. You can also check the credit limit when sales documents, service orders, or service contracts are created or changed.
Advanced Financial Operations	Basic Credit Management	<a href="#">BD6</a>	Changed	This scope item helps you to manage and calculate credit limits for customers. You can also check the credit limit when sales documents are created or changed.
Advanced Financial Operations	Collections and Dispute Management	<a href="#">BFC</a>	Changed	This scope item helps you to streamline debt collection processes, resolve customer invoice disputes, and manage overdue receivables. You can also reduce your exposure to the risks and costs of bad debt.
Advanced Financial Operations	Credit Agency Integration	<a href="#">1RY</a>	Upgraded	This scope item enables the pulling of customer credit scoring data automatically from third-party credit agencies into SAP S/4HANA.
Advanced Financial Operations	External Tax Calculation	<a href="#">4Q2</a>	Upgraded	For the US, there are two delivered tax solutions, internal and external. This scope item focuses on the external solution, which enables integration to an external tax partner for calculating sales and use taxes along with determining tax jurisdictions.
Advanced Financial Operations	VAT Tax Calculation and Reporting for Belgium	<a href="#">5IS</a>	<b>New</b>	This scope item provides information on calculating and reporting taxes in Belgium. This covers companies based in Belgium and foreign companies that do business in Belgium.
Advanced Financial Operations	VAT Tax Calculation and Reporting for Germany	<a href="#">55U</a>	Upgraded	This scope item provides information on calculating and reporting taxes in Germany. This covers companies based in Germany and foreign companies that do business in Germany.

# Finance

## Cost Management and Profitability Analysis (I)

Business Area	Scope Item	SID	Status	Short Description
Cost Management and Profitability Analysis	Actual Costing	<a href="#">33Q</a>	Changed	This scope item enables actual costing for material inventory without cost component split functionality. This supports legal requirements in some countries/regions (such as Brazil).
Cost Management and Profitability Analysis	Commitment Management	<a href="#">2I3</a>	Upgraded	Commitment management is part of the cost monitoring process. Commitment items for projects are triggered by material purchase requisitions and purchase orders and are reduced by goods receipt and other business transactions.
Cost Management and Profitability Analysis	Event-Based Production Cost Posting	<a href="#">3F0</a>	Changed	This scope item updates work-in-process calculation, overhead calculation, and variance calculation by linking the posting to the events in the make-to-stock and make-to-order scenario.
Cost Management and Profitability Analysis	Financial Plan Data Upload from File	<a href="#">1HB</a>	Upgraded	This scope item provides the functionality to load a flat file with PLAN data (.CSV format) from an external source into SAP S/4HANA Cloud.
Cost Management and Profitability Analysis	Financial Planning and Analysis	<a href="#">2FM</a>	Changed	Leverage a unique Financial Statement Version (FSV) to support financial planning and analysis.
Cost Management and Profitability Analysis	Integrated Financial Planning	<a href="#">4RC</a>	Changed	This scope item delivers financial planning functions to support cost management and profitability analysis.
Cost Management and Profitability Analysis	Margin Analysis	<a href="#">J55</a>	Changed	This scope item covers profitability analysis and reporting (normally performed after the period-end close process is completed).
Cost Management and Profitability Analysis	Overhead Cost Accounting	<a href="#">J54</a>	Changed	This scope item covers transaction-based actual postings that are used in overhead cost controlling. The purpose of overhead cost controlling is the planning, allocation, control, and monitoring of overhead costs.
Cost Management and Profitability Analysis	Predictive Accounting for Travel and Expense Management	<a href="#">4Q0</a>	Upgraded	Use the integration between Travel and Expense Management in SAP Concur and Finance in SAP S/4HANA Cloud to forecast the impact of your employees' business trips on the budget planned and allocated to cost centers or projects.
Cost Management and Profitability Analysis	Predictive Analytics Model Training - Finance	<a href="#">30K</a>	Upgraded	This scope item enables you to periodically train the preconfigured predictive scenarios with their own historical data to enable the model to reflect their business context and transaction/master data history.

# Finance

## Cost Management and Profitability Analysis (II)

Business Area	Scope Item	SID	Status	Short Description
Cost Management and Profitability Analysis	Production Capacity Evaluation and Leveling - Consumer Products	<a href="#">5OI</a>	New	This scope item covers the make-to-stock scenario for a Consumer Products production process with full integration of quality management into discrete manufacturing.
Cost Management and Profitability Analysis	Project Control - Finance	<a href="#">1NT</a>	Upgraded	This scope item supports scenarios where a project accounting structure is created as basis to record project costs and project execution. Project-related purchasing, financial activities, and period-end closing activities can be performed and monitored.
Cost Management and Profitability Analysis	Project Control - Sales	<a href="#">4I9</a>	Upgraded	This scope item depicts the integration of projects with the sales orders that enable the direct flow of revenues to the projects. The margin can be easily analyzed along with the incurred costs.
Cost Management and Profitability Analysis	Standard Cost Calculation	<a href="#">BEG</a>	Changed	This process enables you to update standard costs for products as part of annual operations planning.
Cost Management and Profitability Analysis	Statistical Sales Conditions	<a href="#">34B</a>	Upgraded	This scope item enables the transfer of statistical conditions from SD to account-based COPA in SAP S/4HANA for better management reporting.
Cost Management and Profitability Analysis	Subsidiary Integration of SAP S/4HANA Cloud to Central Finance	<a href="#">1W4</a>	Changed	Integrate your subsidiary running on SAP S/4HANA Cloud to your corporate Central Finance in SAP S/4HANA to centralize financial processes.
Cost Management and Profitability Analysis	Universal Allocation	<a href="#">2QL</a>	Changed	This scope item supports annual planning by redistributing the cost through predefined allocation cycles. Sender/receiver rules are defined by fixed amount and percentage within a specific company code.

# Finance

## Enterprise Risk and Compliance (I)

Business Area	Scope Item	SID	Status	Short Description
Enterprise Risk and Compliance	Classification for Customs Tariff Number and Commodity Code	<a href="#">2U3</a>	Upgraded	This scope item provides the ability to manage tariff codes and commodity codes and their assignment to products.
Enterprise Risk and Compliance	Compliance Management with SAP Global Trade Services	<a href="#">24J</a>	Upgraded	This scope item transfers relevant sales and procurement documents from SAP S/4HANA Cloud or on-premise to SAP Global Trade Services on-premise.
Enterprise Risk and Compliance	Continuous Control Monitoring with SAP Process Control	<a href="#">2OH</a>	Upgraded	This scope item integrates SAP Process Control with SAP S/4HANA Cloud to support continuous control monitoring.
Enterprise Risk and Compliance	Customs Management with SAP Global Trade Services	<a href="#">2U1</a>	Changed	This scope item integrates SAP Global Trade Services Customs Management with SAP S/4HANA Cloud or SAP S/4HANA on premise.
Enterprise Risk and Compliance	Embargo Control	<a href="#">1WC</a>	Changed	This scope item supports international trade compliance by preventing transactions with embargoed countries or regions.
Enterprise Risk and Compliance	Financial Operation Monitoring with SAP Financial Compliance	<a href="#">3KY</a>	Upgraded	This scope item enables the automatic monitoring for different operation processes in SAP S/4HANA Cloud as well as integration into SAP Financial Compliance.
Enterprise Risk and Compliance	Intrastat Processing	<a href="#">BDT</a>	Upgraded	This scope item provides system generated Intrastat declarations.
Enterprise Risk and Compliance	Intrastat Processing for Belgium	<a href="#">5PA</a>	<b>New</b>	This scope item provides system generated Intrastat declarations covering company codes outside of Belgium with tax registration in Belgium.
Enterprise Risk and Compliance	Intrastat Processing for Germany	<a href="#">5OL</a>	<b>New</b>	This scope item provides system-generated Intrastat declarations.
Enterprise Risk and Compliance	Key Risk Indicator Monitoring with SAP Risk Management	<a href="#">2U2</a>	Upgraded	This scope item integrates SAP Risk Management with SAP S/4HANA Cloud to support risk monitoring across the enterprise.
Enterprise Risk and Compliance	Legal Control	<a href="#">1W8</a>	Changed	This scope item supports global trade compliance with checks of relevant documents for adherence to the defined trade regulations.

# Finance

## Enterprise Risk and Compliance (II)

Business Area	Scope Item	SID	Status	Short Description
Enterprise Risk and Compliance	Preference Management with SAP Global Trade Services	<a href="#">3JX</a>	Upgraded	This scope item integrates SAP Global Trade Services Preference Management with SAP S/4HANA Cloud and SAP S/4HANA on premise.
Enterprise Risk and Compliance	Privacy Risk Detection with SAP Privacy Governance	<a href="#">3KX</a>	Upgraded	This scope item enables the integration to SAP Privacy Governance to realize automatic detection on potential privacy risks in SAP S/4HANA Cloud.
Enterprise Risk and Compliance	Restricted Party Screening with SAP Watch List Screening	<a href="#">1WE</a>	Changed	Screen SAP S/4HANA Cloud documents against a sanctioned party list utilizing SAP Watch List Screening as part of international trade compliance.
Enterprise Risk and Compliance	Transfer of Bill of Materials for SAP Global Trade Services	<a href="#">24H</a>	Upgraded	This scope item synchronizes the Bill of Material from SAP S/4HANA to SAP Global Trade Services on-premise.
Enterprise Risk and Compliance	Transfer of Contact Person for SAP Global Trade Services	<a href="#">24F</a>	Upgraded	This scope item synchronizes contact persons from SAP S/4HANA to SAP Global Trade Services on-premise.
Enterprise Risk and Compliance	Transfer of Primary Master Data for SAP Global Trade Services	<a href="#">1WA</a>	Upgraded	This scope item synchronizes the primary master data (Customers, Suppliers, and Products) from SAP S/4HANA Cloud to SAP Global Trade Services on-premise.

# Finance

## Real Estate Management (I)

Business Area	Scope Item	SID	Status	Short Description
Real Estate Management	Integration of SAP S/4HANA and SAP Cloud for Real Estate	<a href="#">4X3</a>	Upgraded	This scope item enables the connection of master data in SAP S/4HANA to a location within SAP Cloud for Real Estate.
Real Estate Management	Intercompany Process for Sublease Accounting	<a href="#">2O9</a>	Upgraded	This scope item allows the company to assign or give certain rights to the sublessee – an affiliate company – that are held under the terms of the own original lease with the landlord.
Real Estate Management	Lease-In Accounting	<a href="#">1T6</a>	Upgraded	Lease contracts describe contractual agreements between two partners: the lessor and the lessee. This scope item helps you standardize and automate your lease-in credit contract management activities, like creating and managing new contracts, setting helpful reminder rules, and running reports that help you save time and effort and make more informed lease management decisions.
Real Estate Management	Lease-In Accounting - Group Ledger IFRS	<a href="#">21P</a>	Upgraded	Lease contracts describe contractual agreements between two partners: the lessor and the lessee. This scope item helps you standardize and automate your lease-in credit contract management activities, like creating and managing new contracts, setting helpful reminder rules, and running reports that help you save time and effort and make more informed lease management decisions.
Real Estate Management	Lease-In Accounting - Group Ledger US GAAP	<a href="#">34N</a>	Upgraded	This scope item helps you standardize and automate your lease-in credit contract management activities, saving you time and effort and letting you make more informed lease management decisions.
Real Estate Management	Lease-Out Accounting	<a href="#">21Q</a>	Upgraded	This scope item helps you standardize and automate your lease-out debit contract management activities, saving you time and effort and making more informed lease management decisions.
Real Estate Management	Lease-Out for Sublease Accounting	<a href="#">2SB</a>	Upgraded	This scope item supports the lease-out scenario in a sublease contract.
Real Estate Management	Lease-Out for Sublease Accounting - Group Ledger IFRS	<a href="#">2SA</a>	Upgraded	This scope item supports the lease-out scenario in a sublease contract.
Real Estate Management	Lease-Out for Sublease Accounting - Group Ledger US GAAP	<a href="#">34O</a>	Upgraded	This scope item helps you standardize and automate your lease-out debit contract management activities, helping you save time and effort and make more informed lease management decisions.



# Finance

## Real Estate Management (II)

Business Area	Scope Item	SID	Status	Short Description
Real Estate Management	Sales-Based Rent	<a href="#">3F4</a>	Upgraded	This component provides functions for settling sales-based or percentage-based rental agreements for a real estate contract based on the sales reports of the tenant.
Real Estate Management	Service Contract	<a href="#">21R</a>	Upgraded	Lease contracts describe contractual agreements between two partners: the lessor and the lessee. This scope item helps you standardize and automate your lease service credit contract management activities, like creating and managing new contracts, setting helpful reminder rules, and running reports that help you save time and effort and make more informed lease management decisions.

# Finance

## Subscription Billing and Revenue Management (I)

Business Area	Scope Item	SID	Status	Short Description
Subscription Billing and Revenue Management	Contract Accounting - Cash Application	<a href="#">47I</a>	Upgraded	This solution significantly improves the automatic clearing rate by applying machine learning techniques to the bank statement incoming payment and clearing process to reduce manual work and to save cost.
Subscription Billing and Revenue Management	Contract Accounting - Company Initiated Payments	<a href="#">2DP</a>	Changed	With this scope item, you can process payment documents and returns.
Subscription Billing and Revenue Management	Contract Accounting - Contract-Based Revenue Recognition	<a href="#">3L3</a>	Upgraded	In this scope item, you integrate contract-based revenue recognition with contract accounting.
Subscription Billing and Revenue Management	Contract Accounting - Customer Initiated Payments	<a href="#">2BI</a>	Changed	With this scope item, you can post authorized credit card payments.
Subscription Billing and Revenue Management	Contract Accounting - Daily and Monthly Closing	<a href="#">2BK</a>	Upgraded	With this scope item, you can create transfers to General Ledger and write-offs.
Subscription Billing and Revenue Management	Contract Accounting - Enabling of Products with Variant Configuration	<a href="#">3L8</a>	Upgraded	This scope item covers the creation of provider contracts for products with variant configuration.
Subscription Billing and Revenue Management	Contract Accounting - External Tax Audit	<a href="#">2SJ</a>	Upgraded	With this scope item, you can view and extract accounting relevant data for tax auditors.
Subscription Billing and Revenue Management	Contract Accounting - Group Ledger IFRS	<a href="#">33X</a>	Upgraded	This process is an additional scope item for Contract Accounting. It provides ledger-specific transactions and reports for IFRS.
Subscription Billing and Revenue Management	Contract Accounting - Group Ledger US GAAP	<a href="#">33V</a>	Upgraded	This process is an additional scope item for Contract Accounting. It provides ledger-specific transactions and reports for US GAAP.
Subscription Billing and Revenue Management	Contract Accounting - Integration with Sales Documents	<a href="#">43Y</a>	Upgraded	This scope item integrates contract accounting to provide invoicing of sales documents.
Subscription Billing and Revenue Management	Contract Accounting - Master Data and Basic Functions	<a href="#">2AR</a>	Upgraded	With this scope item, you can create and manage master data of business partners and contract accounts.
Subscription Billing and Revenue Management	Contract Accounting - Open Item Management	<a href="#">2UJ</a>	Changed	In this scope item, you handle open item management for contract accounting.
Subscription Billing and Revenue Management	Convergent Invoicing - Invoice Correction Processing	<a href="#">2BE</a>	Upgraded	With this scope item, you can maintain amounts in existing invoices via credit and debit memos.

# Finance

## Subscription Billing and Revenue Management (II)

Business Area	Scope Item	SID	Status	Short Description
Subscription Billing and Revenue Management	Convergent Invoicing - Invoice Creation for Usage and Service	<a href="#">2BG</a>	Changed	With this scope item, you can bill and invoice usage of a service by a customer.
Subscription Billing and Revenue Management	Convergent Invoicing - Rating of Consumption Items	<a href="#">3DX</a>	Upgraded	With this scope item, you can rate the consumption of a service by a customer.
Subscription Billing and Revenue Management	Convergent Invoicing - Recurring and One-Off Items	<a href="#">2T3</a>	Upgraded	This scope item enables the definition and creation of recurring fees (billing plans) in the invoicing component in SAP S/4HANA Contract Accounting and Invoicing.
Subscription Billing and Revenue Management	Convergent Invoicing - Revenue Sharing and Partner Settlement	<a href="#">42L</a>	Upgraded	SAP S/4HANA Convergent Invoicing provides a new feature for Revenue Sharing for Partner Settlement process. This new feature provides flexibility and satisfaction in the partner ecosystem with support for revenue sharing and partner settlement.
Subscription Billing and Revenue Management	Convergent Invoicing for the Utilities Industry	<a href="#">3L1</a>	Upgraded	This scope item enables utilities processes in SAP S/4HANA Cloud for contract accounting and invoicing.
Subscription Billing and Revenue Management	SAP Fiori Analytical Apps for Contract Accounting Manager	<a href="#">2KH</a>	Upgraded	Analyze data in Contract Accounts Receivable and Payable. Create worklists for clarification cases.
Subscription Billing and Revenue Management	SAP Fiori Analytical Apps for Convergent Invoicing Specialist	<a href="#">2KF</a>	Upgraded	Analyze billed and unbilled items.
Subscription Billing and Revenue Management	Subscription Management with Convergent Invoicing	<a href="#">5IK</a>	Changed	This scenario provides the foundation for subscription management in SAP S/4HANA Cloud. It integrates the financial information to bill and invoice subscriptions in SAP S/4HANA Cloud Convergent Invoicing and process revenues in contract accounting (FI-CA).

# Finance

## Treasury Management (I)

Business Area	Scope Item	SID	Status	Short Description
Treasury Management	Advanced Bank Account Management	<a href="#">J77</a>	Changed	This scope item provides extra functionalities for Bank Account Management.
Treasury Management	Advanced Bank Statement Automation	<a href="#">4X8</a>	Changed	The scope item provides automated and rule-based bank statement reprocessing and proposes reprocessing rules based on past posting actions.
Treasury Management	Advanced Cash Operations	<a href="#">J78</a>	Changed	This scope item provides enhanced functionalities and comprehensive information with payments, bank transfers, and cash reports.
Treasury Management	Advanced Payment Management	<a href="#">4MT</a>	Changed	Advanced Payment Management supports the monitoring and approval of payments for both SAP systems and non-SAP systems.
Treasury Management	Application Interface to Retrieve Payment Files	<a href="#">2YM</a>	Upgraded	This scope item provides basic SOAP service to send outgoing payment files to the banks. This scope item does not provide direct bank communication.
Treasury Management	Automated Dynamic Discounts with SAP Ariba Discount Management	<a href="#">19O</a>	Upgraded	Boost efficiency in accounts payable and cash management as you integrate and automate payments. With dynamic discount capabilities on the Ariba Network, you can pay your suppliers early and save cash.
Treasury Management	Automatic Market Rates Management	<a href="#">1S4</a>	Upgraded	With this process, market data is automatically imported from the currency service provided by the SAP Business Technology Platform.
Treasury Management	Bank Fee Management	<a href="#">2O0</a>	Upgraded	This scope item provides comprehensive functionalities in bank fee management, such as the maintenance of the bank fee conditions and monitoring and validation of the bank fees.
Treasury Management	Bank Guarantee Management	<a href="#">2NZ</a>	Upgraded	This scope item provides functions to manage bank guarantees provided by banks and financial institutions.
Treasury Management	Bank Guarantee Management - Group Ledger IFRS	<a href="#">2O2</a>	Upgraded	The parallel valuation process enables you to post the values calculated in Bank Guarantee Management per IFRS9 phase I (Classification and Measurement).
Treasury Management	Bank Guarantee Management - Group Ledger US GAAP	<a href="#">34F</a>	Upgraded	The parallel valuation process enables you to post the values calculated in Bank Guarantee Management according to US GAAP.

# Finance

## Treasury Management (II)

Business Area	Scope Item	SID	Status	Short Description
Treasury Management	Bank Integration with File Interface	<a href="#">1EG</a>	Upgraded	This scope item uses files handled manually to exchange information about payments and bank statements with your bank.
Treasury Management	Bank Integration with SAP Multi-Bank Connectivity	<a href="#">16R</a>	Upgraded	With SAP Multi-Bank Connectivity (MBC), SAP establishes connections with your banks to automatically send payment instructions, receive status notifications, receive bank statements, and receive lockbox messages.
Treasury Management	Basic Bank Account Management	<a href="#">BFA</a>	Changed	This scope item provides a platform to manage bank account master data.
Treasury Management	Basic Cash Operations	<a href="#">BFB</a>	Changed	This scope item helps you to manage daily cash operations and provides general information of your current cash position and liquidity forecast.
Treasury Management	Bond Management	<a href="#">3WY</a>	Changed	With the Bond Management process, you manage your bond issuance and bond investment, from the analysis of financial status to the accounting postings when the bond is mature.
Treasury Management	Bond Management - Group Ledger IFRS	<a href="#">3WZ</a>	Upgraded	This process enables you to post the values calculated for Bond Management according to IFRS9 phase I (Classification and Measurement).
Treasury Management	Bond Management - Group Ledger US GAAP	<a href="#">3X0</a>	Upgraded	The parallel valuation process enables you to post the values calculated for Bond Management according to US GAAP.
Treasury Management	Debt and Investment Management	<a href="#">1WV</a>	Changed	With the debt and investment management process you manage your short-, medium- and long-term loans and investments, from the analysis of financial status to the final accounting postings when the financial transactions mature.
Treasury Management	Debt and Investment Management - Group Ledger IFRS	<a href="#">1X7</a>	Upgraded	The parallel valuation process enables you to post the values calculated in Debt and Investment Management according to IFRS9 phase I (Classification and Measurement).
Treasury Management	Debt and Investment Management - Group Ledger US GAAP	<a href="#">34C</a>	Upgraded	The parallel valuation process enables you to post the values calculated in Debt and Investment Management according to US GAAP.
Treasury Management	Foreign Currency Risk Management	<a href="#">1X1</a>	Changed	The foreign currency risk management process helps you to better manage and mitigate FX risks arising from your operative business.

# Finance

## Treasury Management (III)

Business Area	Scope Item	SID	Status	Short Description
Treasury Management	Foreign Currency Risk Management - Group Ledger IFRS	<a href="#">1X9</a>	Upgraded	The parallel valuation process enables you to post the values calculated in Foreign Currency Risk Management according to IFRS9 phase I (Classification and Measurement).
Treasury Management	Foreign Currency Risk Management - Group Ledger US GAAP	<a href="#">34D</a>	Upgraded	The parallel valuation process enables you to post the values calculated in Foreign Currency Risk Management according to US GAAP.
Treasury Management	Hedge Accounting for FX Forward - Group Ledger IFRS	<a href="#">1XD</a>	Upgraded	This scope item provides functions to handle Hedge Management and Hedge Accounting processes under IFRS 9.
Treasury Management	Hedge Accounting for FX Forward - Group Ledger US GAAP	<a href="#">3X3</a>	Upgraded	This scope item provides functions to handle hedge management and hedge accounting processes for FX risk using FX forward under US GAAP.
Treasury Management	Hedge Accounting for FX Forward - Local GAAP	<a href="#">3X1</a>	Upgraded	This scope item provides functions to handle hedge management and hedge accounting processes for FX risk using FX forward under local GAAP.
Treasury Management	Hedge Accounting for FX Option - Group Ledger IFRS	<a href="#">2RW</a>	Upgraded	This scope item provides functions to handle Hedge Management and Hedge Accounting process for European Style FX Option under IFRS 9.
Treasury Management	Hedge Accounting for FX Option - Group Ledger US GAAP	<a href="#">3X4</a>	Upgraded	This scope item provides functions to handle hedge management and hedge accounting processes for FX risk using FX option under US GAAP.
Treasury Management	Hedge Accounting for FX Option - Local GAAP	<a href="#">3X2</a>	Upgraded	This scope item provides functions to handle hedge management and hedge accounting processes for FX risk using FX option under local GAAP.
Treasury Management	Hedge Accounting for FX Swap - Group Ledger IFRS	<a href="#">2UF</a>	Upgraded	This scope item provides functions to handle the hedge management and hedge accounting process for FX Swap under IFRS 9.
Treasury Management	Intercompany Debt and Investment Mgmt - Group Ledger IFRS	<a href="#">2OI</a>	Upgraded	This scope item allows the company to handle loans with an affiliate company with the parallel Ledger IFRS.
Treasury Management	Intercompany Debt and Investment Mgmt - Group Ledger US GAAP	<a href="#">34L</a>	Upgraded	This scope item allows the company to handle loans with an affiliate company with the Group Ledger US GAAP.

# Finance

## Treasury Management (IV)

Business Area	Scope Item	SID	Status	Short Description
Treasury Management	Intercompany Foreign Exchange - Group Ledger IFRS	<a href="#">2HU</a>	Upgraded	This scope item allows the company to exchange the foreign currency with the affiliate companies and post the transactions with Group Ledger IFRS.
Treasury Management	Intercompany Foreign Exchange - Group Ledger US GAAP	<a href="#">34M</a>	Upgraded	This scope item allows the company to exchange the foreign currency with the affiliate companies and post the transactions with Group Ledger US GAAP.
Treasury Management	Intercompany Foreign Exchange Management	<a href="#">2F2</a>	Upgraded	The process allows the company to exchange foreign currency with affiliate companies. The system helps to mirror the contracts and deals automatically when they are maintained in one Company.
Treasury Management	Intercompany Process for Cash Concentration	<a href="#">2U8</a>	Changed	This scope item enables the customer to transfer funds from diverse accounts into a central account to improve the efficiency of cash management.
Treasury Management	Intercompany Process for Debt and Investment Mgmt	<a href="#">1YI</a>	Upgraded	This scope item allows company to handle loans with affiliate company.
Treasury Management	Interest Rate Derivatives Management	<a href="#">1X3</a>	Changed	The interest rate derivatives management process helps you manage the interest rate risks that you are exposed to due to debt or investments, from the analysis of financial status to the final accounting postings when the financial transactions mature.
Treasury Management	Interest Rate Derivatives Management - Group Ledger IFRS	<a href="#">1XB</a>	Upgraded	The parallel valuation process enables you to post the values calculated in Interest Rate Derivatives according to IFRS9 phase I (Classification and Measurement).
Treasury Management	Interest Rate Derivatives Management - Group Ledger US GAAP	<a href="#">34E</a>	Upgraded	The parallel valuation process enables you to post the values calculated in Interest Rate Derivatives Management according to US GAAP.
Treasury Management	Letter of Credit Management	<a href="#">49D</a>	Upgraded	This scope item provides functions to manage the whole business process from issuing or receiving letters of credit to financial accounting.
Treasury Management	Letter of Credit Management - Group Ledger IFRS	<a href="#">49E</a>	Upgraded	The parallel valuation process enables you to post the values calculated in letter of credit management per IFRS9 phase I (Classification and Measurement).
Treasury Management	Letter of Credit Management - Group Ledger US GAAP	<a href="#">49F</a>	Upgraded	The parallel valuation process enables you to post the values calculated in letter of credit management per US GAAP.



# Finance

## Treasury Management (V)

Business Area	Scope Item	SID	Status	Short Description
Treasury Management	Liquidity Planning	<a href="#">3L5</a>	Upgraded	The scope item supports the long-term plan of liquidity trend.
Treasury Management	Market Rates Management - Manually via Upload	<a href="#">1XN</a>	Upgraded	With this process, you can manually enter the relevant market data or import market data from spreadsheets needed for the processes in Treasury and Risk Management.
Treasury Management	Money Market Mutual Fund Management	<a href="#">2UN</a>	Changed	This scope item provides functions to handle process and accounting support for Money Market Mutual Fund Management.
Treasury Management	Money Market Mutual Fund Management - Group Ledger IFRS	<a href="#">2UO</a>	Upgraded	The parallel valuation process enables you to post the values calculated in Money Market Mutual Fund Management according to IFRS9 phase I (Classification and Measurement).
Treasury Management	Money Market Mutual Fund Management - Group Ledger US GAAP	<a href="#">34G</a>	Upgraded	The parallel valuation process enables you to post the values calculated in Money Market Mutual Fund Management according to US GAAP.
Treasury Management	SAP Fiori Analytical Apps for Treasury and Risk Management	<a href="#">1MN</a>	Upgraded	This scope item provides an overview page for the treasury and risk management related scenarios.
Treasury Management	Stock Management	<a href="#">5OD</a>	<b>New</b>	With Stock Management, you can manage the whole business process from purchasing and selling of stocks to financial accounting.
Treasury Management	Stock Management - Group Ledger IFRS	<a href="#">5OE</a>	<b>New</b>	The parallel valuation process enables you to post the values calculated in Stock Management according to IFRS9 phase I (Classification and Measurement).
Treasury Management	Stock Management - Group Ledger US GAAP	<a href="#">5OF</a>	<b>New</b>	The parallel valuation process enables you to post the values calculated in debt and investment Management according to US GAAP.
Treasury Management	Treasury Correspondence Integration with SWIFT Network	<a href="#">3QM</a>	Upgraded	This scope item uses SAP Multi-Bank Connectivity to integrate treasury correspondence with the SWIFT network.
Treasury Management	Treasury Trading via Trading Platforms	<a href="#">2F5</a>	Changed	This scope item provides the integration between trading platforms and SAP S/4HANA Cloud automatically.
Treasury Management	Treasury Workstation Accounting Integration	<a href="#">33E</a>	Upgraded	This scope item provides the customer the standalone deployment option from SAP S/4 HANA Cloud to SAP Business Suite.

# Finance

## Treasury Management (VI)

Business Area	Scope Item	SID	Status	Short Description
Treasury Management	Treasury Workstation Cash Integration	<a href="#">34P</a>	Changed	This scope item facilitates the Two-Tier landscape by enabling the data communication between the treasury workstation and the remote systems.
Treasury Management	Treasury Workstation Payment Integration	<a href="#">3NA</a>	Upgraded	This scope item provides the customer the standalone deployment option from SAP S/4 HANA Cloud to SAP Business Suite or SAP S/4HANA system.

# SAP Best Practices for SAP S/4HANA Cloud

## Cloud Capabilities in Line of Business: Human Resources

### Human Resources

Core HR and Time Recording



# Human Resources

## Core HR and Time Recording

Business Area	Scope Item	SID	Status	Short Description
Core HR and Time Recording	Core HR with SAP SuccessFactors Employee Central	<a href="#">JB1</a>	Upgraded	The SAP SuccessFactors Employee Central Integration to the SAP S/4HANA Cloud offers you predefined content for data integration to enable end-to-end business processes across your core Cloud HR - SAP SuccessFactors Employee Central - and SAP S/4HANA Cloud.
Core HR and Time Recording	Employee Integration - SAP S/4HANA Enablement	<a href="#">1FD</a>	Upgraded	This scope item covers the technical enablement of SAP S/4HANA to enable employee master data integration, and to store employee and employee-related data in SAP S/4HANA.
Core HR and Time Recording	Payroll Processing with SAP ERP HCM Payroll	<a href="#">3UP</a>	Upgraded	Integrate your SAP ERP HCM Payroll with SAP S/4HANA Cloud. The payroll information is sent to Financials in SAP S/4HANA Cloud.
Core HR and Time Recording	Payroll Processing with SAP SuccessFactors Employee Central Payroll	<a href="#">1NL</a>	Upgraded	Integrate your SAP SuccessFactors Employee Central Payroll with SAP S/4HANA Cloud. The payroll information is sent to Financials in SAP S/4HANA Cloud.
Core HR and Time Recording	Time Recording	<a href="#">1Q4</a>	Changed	Time recording in enterprise services provides a quick time entry method for employees to record time for WBS elements, cost centers, and internal orders.
Core HR and Time Recording	Time Recording - Project-Based Services	<a href="#">J12</a>	Upgraded	This scope item provides internal and external consultants a quick entry method for recording time against customer or internal projects.
Core HR and Time Recording	Workforce Management with SAP Master Data Integration	<a href="#">4AF</a>	Upgraded	This scope item integrates workforce data from a core human capital management system (such as SAP SuccessFactors Employee Central) with SAP S/4HANA Cloud using the SAP Master Data Integration.

# SAP Best Practices for SAP S/4HANA Cloud

## Cloud Capabilities in Line of Business: Sourcing and Procurement

### Sourcing and Procurement

Supplier Management

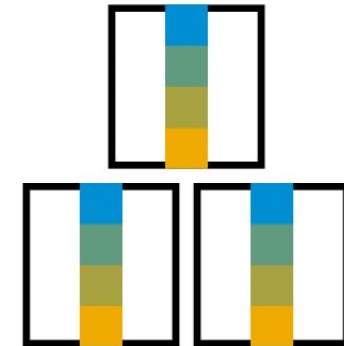
Sourcing and Contract Management

Central Procurement

Operational Procurement

Invoice Management

Procurement Analytics



# Sourcing and Procurement

## Supplier Management

Business Area	Scope Item	SID	Status	Short Description
Supplier Management	Activity Management in Procurement	<a href="#">19C</a>	Upgraded	This scope item supports you when collaborating with internal stakeholders on strategic topics, for example, supplier development, audits, supplier strategy, and so on.
Supplier Management	Prediction of Delivery Date for Purchase Order Items	<a href="#">3FY</a>	Upgraded	With this scope item, you can predict the supplier delivery delay to avoid delaying raw material availability or production rescheduling.
Supplier Management	Supplier Classification and Segmentation	<a href="#">19E</a>	Upgraded	This process identifies suppliers that are strategically important and critical to a customer's business. It enables the appropriate allocation of resources to develop and manage business relationships.
Supplier Management	Supplier Evaluation and Performance Monitoring	<a href="#">SL4</a>	Upgraded	This scope item helps you, as a category manager, to determine a supplier's performance. The scope item does not only evaluate an individual supplier, but rather the whole procurement process.

# Sourcing and Procurement

## Sourcing and Contract Management

Business Area	Scope Item	SID	Status	Short Description
Sourcing and Contract Management	Blockchain-Verified RFQ Processing	<a href="#">3DT</a>	Upgraded	Extend and digitize the chain of trust with suppliers and stakeholders beyond the organization.
Sourcing and Contract Management	Contract Management with SAP Ariba Contracts	<a href="#">4AZ</a>	Upgraded	This integration enables you to run strategic sourcing activities and to integrate prices from SAP Ariba Contracts into operational systems. With enterprise-wide management, you can identify opportunities to pursue and improve negotiation efficiency.
Sourcing and Contract Management	Direct Material Sourcing	<a href="#">4RD</a>	<b>New</b>	This scope item describes the process of sourcing direct materials and creating follow-on documents, such as purchase orders and central contracts, to enable operation procurement of direct materials.
Sourcing and Contract Management	Preferred Supplier List	<a href="#">4RI</a>	<b>New</b>	This scope item defines the process of maintaining a preferred supplier list to be used in different procurement processes.
Sourcing and Contract Management	Purchase Contract	<a href="#">BMD</a>	Upgraded	This scope item describes the use of contracts in procurement activities. Contracts are agreements with suppliers to supply materials or services under negotiated conditions and within a certain period.
Sourcing and Contract Management	Request for Price	<a href="#">1XF</a>	Upgraded	With this scope item, you can quickly create RFQs in the SAP S/4HANA system and send them to suppliers via e-mail or as a printed version by mail.
Sourcing and Contract Management	SAP S/4HANA for Enterprise Contract Management	<a href="#">1XV</a>	Upgraded	SAP S/4HANA Cloud for enterprise contract management is an application that enables digitization and management of all legal content (for example, contracts) within an organization. This application facilitates creation and management of legal content in enterprises in alignment with core business processes. It provides an integrated platform to run enterprise-wide legal processes more efficiently.
Sourcing and Contract Management	Sourcing with SAP Ariba Sourcing	<a href="#">4BL</a>	Changed	Extend your operational procurement processes to SAP Ariba Sourcing and select the most cost-effective bids from millions of suppliers on Ariba Network. Once awarded, you can automatically convert bids in SAP Ariba Sourcing to purchase orders in SAP S/4HANA.

# Sourcing and Procurement

## Central Procurement (I)

Business Area	Scope Item	SID	Status	Short Description
Central Procurement	Automation of Central Procurement Quotes with Ariba Network	<a href="#">5JT</a>	Changed	In this scope item, you can create a central RFQ in Central Procurement by pooling PRs across connected systems. Quotation are send from Ariba Network to SAP Central Procurement. Awarding is done on SAP Central Procurement. You can create operational contracts or purchase orders in connected systems after finalizing the best suppliers using SAP Central Procurement.
Central Procurement	Batch Management	<a href="#">BLF</a>	Upgraded	This scope item lets you work with homogeneous partial quantities of a material or product throughout the logistics quantity and value chain. This includes documentation of material properties, where-used information, and quality status.
Central Procurement	Central Invoicing	<a href="#">41G</a>	Upgraded	This scope item describes the process for central invoice monitoring that caters to the needs of headquarters to manage their invoice business processes centrally for all the connected company codes.
Central Procurement	Central Procurement with SAP Ariba Sourcing	<a href="#">4QN</a>	Changed	In this scope item, you can create a central RFQ in Central procurement by pooling PRs across connected systems. You can create operational contracts or purchase orders in connected systems after finalizing the best suppliers using SAP Ariba Sourcing and Ariba Network.
Central Procurement	Central Purchase Contracts	<a href="#">2ME</a>	Changed	This scope item describes the central contract created in the central purchasing organization and distributed to other subsidiaries.
Central Procurement	Central Purchase Requisition Processing	<a href="#">47J</a>	Upgraded	This scope item describes the processing of central purchase requisitions to purchase orders in SAP S/4HANA central procurement hub system.
Central Procurement	Central Purchasing	<a href="#">2XT</a>	Changed	Central Purchasing in SAP S/4HANA caters to the needs of the headquarters to centrally manage their procurement business processes for all the connected plants. The Central Purchasing scenario provides a single point of access and visibility to purchasing documents, helping to reduce the TCO.
Central Procurement	Central Requisitioning	<a href="#">1XI</a>	Changed	Procurement departments across all company sizes are continuing to centralize their procurement processes globally or regionally. There is a trend to establish Shared Service Centers where buying is built over a centralized procurement system.
Central Procurement	Central Sourcing	<a href="#">3ZF</a>	Changed	Procurement departments for all company sizes continue to centralize their procurement processes globally or regionally. There is a trend to establish Shared Service Centers where buying is built over a centralized sourcing and procurement system.



# Sourcing and Procurement

## Central Procurement (II)

Business Area	Scope Item	SID	Status	Short Description
Central Procurement	Contract for Central Procurement with SAP Ariba Contracts	<a href="#">4B0</a>	Upgraded	This integration enables you to run strategic sourcing activities and to integrate prices from SAP Ariba Contracts into operational systems. Integrated with Central Procurement, you can scale your contracts across the whole organization.
Central Procurement	Direct Material Sourcing	<a href="#">4RD</a>	<b>New</b>	This scope item describes the process of sourcing direct materials and creating follow-on documents, such as purchase orders and central contracts, to enable operation procurement of direct materials.
Central Procurement	Guided Buying for Central Procurement with SAP Ariba Buying	<a href="#">3EN</a>	Upgraded	The integration with the guided buying capability targets employee self-service procurement. Integrated with Central Procurement it is possible to scale the purchasing processes across the whole unit by leveraging it over a centralized procurement system.
Central Procurement	Quality Management in Discrete Manufacturing - Consumer Products	<a href="#">5HK</a>	<b>New</b>	This scope item covers a make-to-stock scenario for a Consumer Products production process with full integration of quality management into discrete manufacturing.
Central Procurement	Real-Time Reporting and Monitoring for Procurement	<a href="#">1JI</a>	Upgraded	Real-time reporting and monitoring in procurement enables business users to perform their daily tasks quickly and effectively without requiring opening multiple reports and transactions.

# Sourcing and Procurement

## Operational Procurement (I)

Business Area	Scope Item	SID	Status	Short Description
Operational Procurement	Automated Invoice Settlement	<a href="#">2LH</a>	Upgraded	This scope item can be used to procure goods and enables the user to settle goods receipts directly, without an invoice from a supplier. The system posts the invoice document automatically based on the data in the purchase order and goods receipt.
Operational Procurement	Automated Purchase-to-Pay with SAP Ariba Commerce Automation	<a href="#">J82</a>	Upgraded	This scope item (for purchasing experts and accounts payable accountants) lets you focus on value-driving activities with SAP Ariba Commerce Automation integration with your suppliers in the Ariba Network, and lets you drive productivity with nearly touchless orders and invoices.
Operational Procurement	Automation of Source-to-Pay with Ariba Network	<a href="#">42K</a>	Changed	This business process focuses on value-driven activities with SAP Ariba Commerce Automation integration with your suppliers in the Ariba Network, and lets you drive productivity with nearly touchless orders and invoices.
Operational Procurement	Billing of Costs Between Affiliated Companies	<a href="#">3ZB</a>	Upgraded	With this scope item, a company can bill costs to an affiliate, creating a supplier invoice.
Operational Procurement	Complementary Procurement Functions	<a href="#">2TW</a>	Upgraded	This scope item provides seamless processes for the procurement of operating supplies as well as for batch and serial number managed material, including the steps from the creation of a purchase order to the invoice creation.
Operational Procurement	Consumable Purchasing	<a href="#">BNX</a>	Upgraded	This scope item enables the user to order consumables. It ensures a stable and efficient procurement process including all steps from the initial creation of a purchase requisition to the invoice creation and handling.
Operational Procurement	Cross-Company Purchasing Organization	<a href="#">2R3</a>	Upgraded	This scope item enables the user to flexibly set up a cross-company purchasing organization.
Operational Procurement	Delivery Insights enabled by IoT	<a href="#">4IH</a>	Upgraded	This scope item enables you to derive real-time insights about your delivery processes by leveraging Internet of Things data. By constantly monitoring all connected entities, the system detects critical issues and proactively notifies the relevant parties.
Operational Procurement	Direct Procurement with Inbound Delivery	<a href="#">2TX</a>	Upgraded	This scope item enables the user to order direct materials using inbound deliveries. It ensures an efficient process including all steps from the initial creation of a purchase order to the invoice management.
Operational Procurement	Guided Buying Capability with SAP Ariba Buying	<a href="#">2NV</a>	Upgraded	SAP S/4HANA Cloud and guided buying integration capability targets employee self-service procurement. This integration allows procurement organizations to scale their purchasing processes across spend categories while enforcing compliance.

# Sourcing and Procurement

## Operational Procurement (II)

Business Area	Scope Item	SID	Status	Short Description
Operational Procurement	Guided Buying for Central Procurement with SAP Ariba Buying	<a href="#">3EN</a>	Upgraded	The integration with the guided buying capability targets employee self-service procurement. Integrated with Central Procurement it is possible to scale the purchasing processes across the whole unit by leveraging it over a centralized procurement system.
Operational Procurement	Image-Based Buying	<a href="#">3UH</a>	Upgraded	This scope item covers the process to order items based on an image.
Operational Procurement	Integration of Procurement with External Suppliers	<a href="#">2EJ</a>	Upgraded	Digitize your procurement data exchange with suppliers using a set of SOAP APIs. Use this scope item as starting point for mapping towards your supplier's EDI messages. In a Two-Tier scenario, you send your purchase orders and return purchase orders from subsidiary to headquarters.
Operational Procurement	Intelligent Approval Workflow	<a href="#">43E</a>	Upgraded	This scope item analyzes past approval patterns for purchase requisitions and provides recommendations for automated approval.
Operational Procurement	Intercompany Stock Transfer	<a href="#">1P9</a>	Upgraded	This scope item covers stock transfer process between two companies, including domestic and international processes.
Operational Procurement	Intercompany Stock Transfer Returns	<a href="#">2TS</a>	Upgraded	This scope item describes the return process for intercompany stock transfer.
Operational Procurement	Logistics with Third-Party Warehouse Management	<a href="#">1ZQ</a>	Upgraded	This scope item enables the integration of self-operated warehouses implemented with on-premise third-party warehouse management solutions (Warehouse Management Systems, WMS) to SAP S/4HANA Cloud.
Operational Procurement	Predictive Analytics for Purchase Contract Quantity Consumption	<a href="#">1QR</a>	Upgraded	This scope item lets you predict contract consumption by analyzing contracts. The Purchaser can analyze important information, such as expiring contracts, overdue purchase orders or urgent purchase requisitions etc.
Operational Procurement	Procurement of Direct Materials	<a href="#">J45</a>	Upgraded	This scope item enables the user to order direct materials. A seamless process is incorporated and ensures a stable and efficient process including all steps from the initial creation of a purchase requisition to the invoice creation and handling.
Operational Procurement	Procurement of Materials with Variant Configuration	<a href="#">2XU</a>	Upgraded	This scope item describes the process of externally procuring materials using the Advanced Variant Configuration feature, required in the manufacturing process.
Operational Procurement	Procurement of Pipeline Materials	<a href="#">41F</a>	Upgraded	The scope item describes the procurement of pipeline materials. A pipeline material is a material that flows directly into the production process from a pipeline.

# Sourcing and Procurement

## Operational Procurement (III)

Business Area	Scope Item	SID	Status	Short Description
Operational Procurement	Procurement of Services	<a href="#">22Z</a>	Upgraded	This scope item enables an efficient process for the procurement of services. It ensures an easy-to-use and seamless process covering all steps from the initial creation of a purchase requisition to the invoice management.
Operational Procurement	Produce and Sell Standard Products - Inventory Management	<a href="#">54U</a>	Changed	This scope item enables production planning and execution of serialized finished goods in make-to-stock scenarios, procurement of required components, as well as sales order processing, quality inspection and invoicing.
Operational Procurement	Proposal of Options for Materials Without Purchase Contract	<a href="#">30W</a>	Upgraded	This scope item provides options for the purchaser to create an RFQ if the materials do not have a purchase contract.
Operational Procurement	Propose Creation of Catalog Items based on Free-Text Purchase Orders	<a href="#">2XW</a>	Upgraded	During purchase requisition creation, free text item entry can be interpreted as a catalog item, due to recommendations from the Machine Learning algorithm.
Operational Procurement	Propose Material Group in Free-Text Purchase Requisitions	<a href="#">2XV</a>	Upgraded	This scope item covers the proposal of material groups in free-text purchase requisitions.
Operational Procurement	Purchasing Rebate Processing	<a href="#">2R7</a>	Upgraded	This scope item covers the subsequent settlement of rebate conditions agreed on with suppliers. You can use supplier invoice amounts or goods receipts quantities as business volume for the rebate calculation.
Operational Procurement	Requisitioning	<a href="#">18J</a>	Changed	This scope item describes employee requisitioning activities. An employee creates a shopping cart. A purchase requisition is generated and converted to a purchase order. When the employee receives the goods, they perform a goods receipt confirmation.
Operational Procurement	Scheduling Agreement for Consignment Procurement	<a href="#">2NY</a>	Upgraded	This scope item describes the process for consignment procurement with scheduling agreement.
Operational Procurement	Scheduling Agreement for Subcontracting Procurement	<a href="#">2NX</a>	Upgraded	This scope item describes the process of subcontracting procurement with scheduling agreement.
Operational Procurement	Scheduling Agreements in Procurement	<a href="#">BMR</a>	Upgraded	This scope item supports the scheduling agreement in procurement process.
Operational Procurement	Serial Number Management	<a href="#">BLI</a>	Upgraded	This scope item helps you to identify material items in the supply chain and to track these during goods movement. It includes configuration settings for serial number management and provides serial number handling at finished goods level.

# Sourcing and Procurement

## Operational Procurement (IV)

Business Area	Scope Item	SID	Status	Short Description
Operational Procurement	Service Procurement with Ariba Network and SAP Fieldglass	<a href="#">4R2</a>	Changed	This scope item enables an efficient process for the procurement of services between the purchaser and suppliers. It ensures a seamless procurement process with an emphasis on collaboration between buyers, purchasers, and services suppliers.
Operational Procurement	Subcontracting	<a href="#">BMY</a>	Upgraded	The subcontracting process involves sending components to a supplier for manufacturing and receiving the finished materials. The seamless and efficient process includes all steps from the initial creation of a purchase order to the invoice management.
Operational Procurement	Subcontracting with Ariba Network	<a href="#">5I2</a>	<b>New</b>	The subcontracting process involves sending components to a supplier for manufacturing on the Ariba Network. The seamless and efficient process includes all steps from the initial creation of a purchase order to invoice management.
Operational Procurement	Supplier Consignment	<a href="#">2LG</a>	Upgraded	By using the consignment process for procurement, the supplier provides the material and stores it at site of the procuring party. The supplier maintains the legal owner of the material until it is withdrawn from the consignment stores.

# Sourcing and Procurement

## Invoice Management (I)

Business Area	Scope Item	SID	Status	Short Description
Invoice Management	Automated Invoice Settlement	<a href="#">2LH</a>	Upgraded	This scope item can be used to procure goods and enables the user to settle goods receipts directly, without an invoice from a supplier. The system posts the invoice document automatically based on the data in the purchase order and goods receipt.
Invoice Management	Automated Invoice Settlement – Automotive	<a href="#">5L6</a>	<b>New</b>	This scope item supports the enablement of business partner maintenance for settlement profile assignment.
Invoice Management	Automated Purchase-to-Pay with SAP Ariba Commerce Automation	<a href="#">J82</a>	Upgraded	This scope item (for purchasing experts and accounts payable accountants) lets you focus on value-driving activities with SAP Ariba Commerce Automation integration with your suppliers in the Ariba Network, and lets you drive productivity with nearly touchless orders and invoices.
Invoice Management	Automotive Supply to Customer - Inventory Management	<a href="#">55F</a>	Changed	This scope item describes an end-to-end process for automotive suppliers with focus on scheduling agreements for sales, Just-In-Time processing, scheduling agreements for purchasing, repetitive manufacturing, delivery, and self-billing (optional).
Invoice Management	Central Invoicing	<a href="#">41G</a>	Upgraded	This scope item describes the process for central invoice monitoring that caters to the needs of headquarters to manage their invoice business processes centrally for all the connected company codes.
Invoice Management	Complementary Procurement Functions	<a href="#">2TW</a>	Upgraded	This scope item provides seamless processes for the procurement of operating supplies as well as for batch and serial number managed material, including the steps from the creation of a purchase order to the invoice creation.
Invoice Management	Consumable Purchasing	<a href="#">BNX</a>	Upgraded	This scope item enables the user to order consumables. It ensures a stable and efficient procurement process including all steps from the initial creation of a purchase requisition to the invoice creation and handling.
Invoice Management	Direct Procurement with Inbound Delivery	<a href="#">2TX</a>	Upgraded	This scope item enables the user to order direct materials using inbound deliveries. It ensures an efficient process including all steps from the initial creation of a purchase order to the invoice management.
Invoice Management	External Workforce Procurement via SAP Fieldglass	<a href="#">22K</a>	Changed	Integrate SAP S/4HANA Cloud with SAP Fieldglass solutions to optimize your total workforce mix. Counter seasonal skill shortages, staff projects with outside experts, and augment staff strategically or for short term needs.
Invoice Management	Intercompany Stock Transfer	<a href="#">1P9</a>	Upgraded	This scope item covers stock transfer process between two companies, including domestic and international processes.

# Sourcing and Procurement

## Invoice Management (II)

Business Area	Scope Item	SID	Status	Short Description
Invoice Management	Intercompany Stock Transfer Returns	<a href="#">2TS</a>	Upgraded	This scope item describes the return process for intercompany stock transfer.
Invoice Management	Invoice Processing by OpenText	<a href="#">1LE</a>	Upgraded	Invoice Processing by OpenText enables SAP S/4HANA Cloud to extend the invoice process by incorporating an automated invoice document recognition solution. You use this solution to post supplier invoices or to create invoice drafts for manual completion.
Invoice Management	Procurement of Direct Materials	<a href="#">J45</a>	Upgraded	This scope item enables the user to order direct materials. A seamless process is incorporated and ensures a stable and efficient process including all steps from the initial creation of a purchase requisition to the invoice creation and handling.
Invoice Management	Procurement of Services	<a href="#">22Z</a>	Upgraded	This scope item enables an efficient process for the procurement of services. It ensures an easy-to-use and seamless process covering all steps from the initial creation of a purchase requisition to the invoice management.
Invoice Management	Propose Resolution for Invoice Payment Block	<a href="#">2XX</a>	Upgraded	This scope item covers proposals for resolution for invoice payment block.
Invoice Management	Requisitioning	<a href="#">18J</a>	Changed	This scope item describes employee requisitioning activities. An employee creates a shopping cart. A purchase requisition is generated and converted to a purchase order. When the employee receives the goods, they perform a goods receipt confirmation.
Invoice Management	Returnable Packaging to Vendor	<a href="#">2UU</a>	Upgraded	This process covers when a goods supplier sends a Nota Fiscal with a material and a returnable package, and requests return of the latter item.
Invoice Management	SAP Central Invoice Management Backend Enablement	<a href="#">4N6</a>	Upgraded	This scope item enables the data determination for SAP Central Invoice Management. To enable the data transfer to SAP Central Invoice Management, you must complete the configuration on the SAP Business Technology Platform side.
Invoice Management	Service Procurement with Ariba Network and SAP Fieldglass	<a href="#">4R2</a>	Changed	This scope item enables an efficient process for the procurement of services between the purchaser and suppliers. It ensures a seamless procurement process with an emphasis on collaboration between buyers, purchasers, and services suppliers.
Invoice Management	Subcontracting	<a href="#">BMY</a>	Upgraded	The subcontracting process involves sending components to a supplier for manufacturing and receiving the finished materials. The seamless and efficient process includes all steps from the initial creation of a purchase order to the invoice management.

# Sourcing and Procurement

## Invoice Management (III)

Business Area	Scope Item	SID	Status	Short Description
Invoice Management	Subcontracting with Ariba Network	<a href="#">5I2</a>	New	The subcontracting process involves sending components to a supplier for manufacturing on the Ariba Network. The seamless and efficient process includes all steps from the initial creation of a purchase order to invoice management.
Invoice Management	Supplier Consignment	<a href="#">2LG</a>	Upgraded	By using the consignment process for procurement, the supplier provides the material and stores it at site of the procuring party. The supplier maintains the legal owner of the material until it is withdrawn from the consignment stores.



# Sourcing and Procurement

## Procurement Analytics

Business Area	Scope Item	SID	Status	Short Description
Procurement Analytics	Analytics - Purchase Order Visibility and Procurement Spend	<a href="#">2QU</a>	Upgraded	This scope item provides procurement-related CDS views to leverage extensibility and reporting functionality.
Procurement Analytics	Real-Time Reporting and Monitoring for Procurement	<a href="#">1JI</a>	Upgraded	Real-time reporting and monitoring in procurement enables business users to perform their daily tasks quickly and effectively without requiring opening multiple reports and transactions.
Procurement Analytics	Service Procurement with Ariba Network and SAP Fieldglass	<a href="#">4R2</a>	Changed	This scope item enables an efficient process for the procurement of services between the purchaser and suppliers. It ensures a seamless procurement process with an emphasis on collaboration between buyers, purchasers, and services suppliers.

# SAP Best Practices for SAP S/4HANA Cloud

## Cloud Capabilities in Line of Business: Manufacturing

### Manufacturing

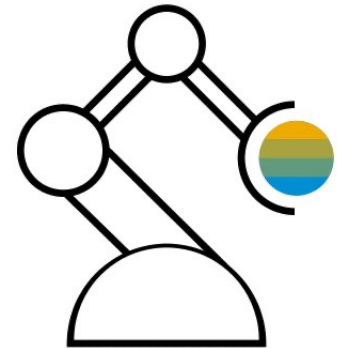
Production Planning

Extended Production Planning and Scheduling

Production Engineering

Production Operations

Quality Management



# Manufacturing

## Production Planning (I)

Business Area	Scope Item	SID	Status	Short Description
Production Planning	Automotive Supply to Customer - Inventory Management	<a href="#">55F</a>	Changed	This scope item describes an end-to-end process for automotive suppliers with focus on scheduling agreements for sales, Just-In-Time processing, scheduling agreements for purchasing, repetitive manufacturing, delivery, and self-billing (optional).
Production Planning	Engineer-to-Order Production with Variant Configuration	<a href="#">4R8</a>	Upgraded	This scope item supports the engineer-to-order process for configurable materials.
Production Planning	Make-to-Order Production - Finished Goods Sales and Final Assembly	<a href="#">BJE</a>	Upgraded	This scope item covers the Make-to-Order process of batch-managed (optional) finished goods from customer quotation, sales order, production planning and execution to the delivery, and billing of the customer. The Sales Order BoM process is supported (optional).
Production Planning	Make-to-Order Production - Semifinished Goods Planning and Assembly	<a href="#">1BM</a>	Upgraded	This scope item supports production planning for semifinished components within a Make-to-order (MTO) environment before the receipt of incoming sales orders. This reduces the lead time of sales orders for finished goods that are received later.
Production Planning	Make-to-Order Production with Variant Configuration	<a href="#">1YT</a>	Upgraded	This scope item shows a Make-to-Order Production scenario using the Advanced Variant Configuration for an efficient state-of-the-art configuration of a material ordered by a customer. It covers single-level and multi-level configurable materials.
Production Planning	Make-to-Stock - Process Manufacturing Based on Process Order	<a href="#">BJ8</a>	Changed	This scope item provides a platform for process manufacturing, supporting processes in manufacturing for the chemical, pharmaceutical, and food and beverage industries, as well as the batch-oriented electronics industry.
Production Planning	Make-to-Stock - Process Manufacturing Based on Production Order	<a href="#">2UG</a>	Upgraded	This scope item provides a platform for process manufacturing, supporting processes in manufacturing for the chemical, pharmaceutical, and food and beverage industries, as well as the batch-oriented electronics industry.
Production Planning	Make-to-Stock Production - Discrete Manufacturing	<a href="#">BJ5</a>	Upgraded	This process supports the following: Requirements planning, production order releasing, goods movements, and production order confirmation including Available-to-Promise checks for serial number managed finished good.
Production Planning	Make-to-Stock Production - Repetitive Manufacturing	<a href="#">BJH</a>	Upgraded	This process enables you to perform make-to-stock production based on run schedules. The production is controlled without a direct reference to sales orders. Run schedules determine the dates and quantities. Requirements are created in Demand Management.

# Manufacturing

## Production Planning (II)

Business Area	Scope Item	SID	Status	Short Description
Production Planning	Make-to-Stock Production with Variant Configuration	<a href="#">21D</a>	Upgraded	This scope item shows the Make-to-Stock Production with Variant Configuration in which Advanced Variant Configuration enables efficient state-of-the-art configuration for product variants that reflect common definitions of a configurable material.
Production Planning	Material Requirements Planning	<a href="#">J44</a>	Changed	This scope item covers a Materials Requirements Planning (MRP) process to procure material using purchase requisitions or delivery schedules for scheduling agreements. Optionally, purchase requisition handover and MRP material exceptions can be handled.
Production Planning	Predictive Material and Resource Planning	<a href="#">4B5</a>	Upgraded	This scope item enables the planner to quickly create demand scenario simulations and interactively evaluate and simulate capacity constraints and demand fulfillment.
Production Planning	Produce and Sell Standard Products - Inventory Management	<a href="#">54U</a>	Changed	This scope item enables production planning and execution of serialized finished goods in make-to-stock scenarios, procurement of required components, as well as sales order processing, quality inspection and invoicing.
Production Planning	Produce and Sell Standard Products - Warehouse Managed	<a href="#">54V</a>	Changed	This scope item enables production planning and execution of finished goods in a make-to-stock scenario, procurement of required components, as well as sales order processing, quality inspection, and invoicing, focusing on warehouse-managed stock.
Production Planning	Production Capacity Evaluation	<a href="#">31L</a>	Upgraded	This process supports transparency on current and future capacity situations based on production plans. The user can detect bottleneck situations early within his area of responsibility.
Production Planning	Production Capacity Evaluation and Leveling - Consumer Products	<a href="#">5OI</a>	<b>New</b>	This scope item covers the make-to-stock scenario for a Consumer Products production process with full integration of quality management into discrete manufacturing.
Production Planning	Production Capacity Leveling	<a href="#">3LQ</a>	Upgraded	The process of production capacity leveling enables the planning and scheduling (dispatching) of production and process orders and operations.
Production Planning	Quality Management in Discrete Manufacturing - Consumer Products	<a href="#">5HK</a>	<b>New</b>	This scope item covers a make-to-stock scenario for a Consumer Products production process with full integration of quality management into discrete manufacturing.
Production Planning	SAP Fiori Analytical Apps for Production Planning	<a href="#">2JD</a>	Upgraded	This scope item provides overview pages for the plant manager, with a focus on providing high level information to ensure smooth functioning of a plant or location.

# Manufacturing

## Extended Production Planning and Scheduling

Business Area	Scope Item	SID	Status	Short Description
Extended Production Planning and Scheduling	Demand-Driven Buffer Level Management	<a href="#">1Y2</a>	Changed	Demand-Driven Buffer Level Management helps to manage supply chains based on customer demand by decoupling material flows and lowering inventory using dynamically managed stock buffers for relevant products. To calculate buffer levels, predictive MRP can be used.
Extended Production Planning and Scheduling	Demand-Driven Replenishment Planning and Execution	<a href="#">2QI</a>	Changed	Demand Driven Replenishment Planning and Execution helps you to monitor demand-driven replenishment using apps that provide dedicated views for Replenishment Planning and Replenishment Execution.
Extended Production Planning and Scheduling	Quality Management in Discrete Manufacturing - Consumer Products	<a href="#">5HK</a>	<b>New</b>	This scope item covers a make-to-stock scenario for a Consumer Products production process with full integration of quality management into discrete manufacturing.

# Manufacturing Production Engineering

Business Area	Scope Item	SID	Status	Short Description
Production Engineering	Change Manufacturing Bill of Material for Production	<a href="#">3LO</a>	Upgraded	This scope item covers the process of executing change-number-managed BOM updates in the production process.
Production Engineering	Mass Change Manufacturing Bill of Material for Production	<a href="#">3LP</a>	Upgraded	This scope item covers the change-master-controlled change process for materials and components in the manufacturing bills of materials.
Production Engineering	Quality Management in Discrete Manufacturing - Consumer Products	<a href="#">5HK</a>	<b>New</b>	This scope item covers a make-to-stock scenario for a Consumer Products production process with full integration of quality management into discrete manufacturing.

# Manufacturing

## Production Operations (I)

Business Area	Scope Item	SID	Status	Short Description
Production Operations	Analytics for Production Unit - Plan/Actual Production Cost	<a href="#">2QW</a>	Upgraded	This scope item provides the foundation to produce prebuilt finance analytics content using Core Data Services (CDS). Views help the customer understand business trends. A set of Key Performance Indicators allow for robust analytics.
Production Operations	Automotive Supply to Customer - Inventory Management	<a href="#">55F</a>	Changed	This scope item describes an end-to-end process for automotive suppliers with focus on scheduling agreements for sales, Just-In-Time processing, scheduling agreements for purchasing, repetitive manufacturing, delivery, and self-billing (optional).
Production Operations	Batch Management	<a href="#">BLF</a>	Upgraded	This scope item lets you work with homogeneous partial quantities of a material or product throughout the logistics quantity and value chain. This includes documentation of material properties, where-used information, and quality status.
Production Operations	Enable Manufacturing Subsidiary to Handle Assembly for Headquarter	<a href="#">2WL</a>	Upgraded	This scope item runs as a Make-to-Order scenario (assembly processing) at a subsidiary. During sales order, delivery, and billing processing, electronic messages are exchanged between a subsidiary and headquarters.
Production Operations	Inbound Storage Tank Management - Process Manufacturing	<a href="#">3UK</a>	Upgraded	This scope item enables the storage tank management process, which supports the procurement of a new batch into the day tank and then mixing of this new batch with an existing batch in the main tank with a special mixing process order type.
Production Operations	Just-In-Time Supply to Customer	<a href="#">2EM</a>	Changed	This scope item describes the Just-in-Time process (supply to customer) for component manufacturers. The business process encompasses steps from receiving Just-In-Time calls to billing.
Production Operations	Just-In-Time Supply to Customer with Delivery Confirmation	<a href="#">53X</a>	Changed	This scope item describes the Just-In-Time supply to customer with delivery confirmation for component manufacturers. The business process encompasses steps from receiving Just-In-Time delivery confirmation to billing.
Production Operations	Make-to-Order Production - Finished Goods Sales and Final Assembly	<a href="#">BJE</a>	Upgraded	This scope item covers the Make-to-Order process of batch-managed (optional) finished goods from customer quotation, sales order, production planning and execution to the delivery, and billing of the customer. The Sales Order BoM process is supported (optional).
Production Operations	Make-to-Order Production - Process Manufacturing	<a href="#">3OK</a>	Upgraded	This scope item encompasses the Make-to-Order process of batch-managed finished goods from customer quotation (optional), sales order creation, production planning, and execution using process orders to the delivery and billing of the customer.

# Manufacturing

## Production Operations (II)

Business Area	Scope Item	SID	Status	Short Description
Production Operations	Make-to-Order Production - Semifinished Goods Planning and Assembly	<a href="#">1BM</a>	Upgraded	This scope item supports production planning for semifinished components within a Make-to-order (MTO) environment before the receipt of incoming sales orders. This reduces the lead time of sales orders for finished goods that are received later.
Production Operations	Make-to-Order Production for Sales Kits with Variant Configuration	<a href="#">4OC</a>	Upgraded	This scope item supports a make-to-order production scenario for variant configuration products bundled into sales kits using advanced variant configuration (AVC) for an efficient state-of-the-art configuration of a material ordered by a customer. Once you enter a bill of material in a sales order, the AVC tool is called to specify the configuration. As a result, subitems are generated in the sales order. The system runs pricing and logistics execution at the subitem level.
Production Operations	Make-to-Order Production with Variant Configuration	<a href="#">1YT</a>	Upgraded	This scope item shows a Make-to-Order Production scenario using the Advanced Variant Configuration for an efficient state-of-the-art configuration of a material ordered by a customer. It covers single-level and multi-level configurable materials.
Production Operations	Make-to-Stock - Process Manufacturing Based on Process Order	<a href="#">BJ8</a>	Changed	This scope item provides a platform for process manufacturing, supporting processes in manufacturing for the chemical, pharmaceutical, and food and beverage industries, as well as the batch-oriented electronics industry.
Production Operations	Make-to-Stock - Process Manufacturing Based on Production Order	<a href="#">2UG</a>	Upgraded	This scope item provides a platform for process manufacturing, supporting processes in manufacturing for the chemical, pharmaceutical, and food and beverage industries, as well as the batch-oriented electronics industry.
Production Operations	Make-to-Stock Production - Discrete Manufacturing	<a href="#">BJ5</a>	Upgraded	This process supports the following: Requirements planning, production order releasing, goods movements, and production order confirmation including Available-to-Promise checks for serial number managed finished good.
Production Operations	Make-to-Stock Production - Repetitive Manufacturing	<a href="#">BJH</a>	Upgraded	This process enables you to perform make-to-stock production based on run schedules. The production is controlled without a direct reference to sales orders. Run schedules determine the dates and quantities. Requirements are created in Demand Management.
Production Operations	Make-to-Stock Production with Variant Configuration	<a href="#">21D</a>	Upgraded	This scope item shows the Make-to-Stock Production with Variant Configuration in which Advanced Variant Configuration enables efficient state-of-the-art configuration for product variants that reflect common definitions of a configurable material.



# Manufacturing

## Production Operations (III)

Business Area	Scope Item	SID	Status	Short Description
Production Operations	Make-to-Stock with Co- and By-Products - Process Manufacturing	<a href="#">3L7</a>	Upgraded	This scope item enables production planning in make-to-stock scenarios with joint production capability (the process of manufacturing two or more products in a single production run (for example, co- and by-products along with the main product)).
Production Operations	Make-to-Stock with Silo Material - Process Manufacturing	<a href="#">3UL</a>	Upgraded	This scope item focuses on more complex process manufacturing scenarios with silo materials and phantom assemblies. Silo materials are generally stored in big silos or tanks. The silos are modeled as separate storage locations.
Production Operations	Material Replenishment with Kanban - External Procurement	<a href="#">1E3</a>	Changed	This scope item introduces Kanban-- a lean production control method within a manufacturing environment. With Kanban, material is staged where it is used. This scope item focus on Kanban replenishment with external procurement strategies.
Production Operations	Material Replenishment with Kanban - In-House Production	<a href="#">4B3</a>	Upgraded	This scope item introduces Kanban-- a lean production control method within a manufacturing environment. With Kanban, material is staged where it's used. This scope item focus on Kanban replenishment with in-house production strategies.
Production Operations	Material Replenishment with Kanban - Stock Transfer	<a href="#">4B4</a>	Upgraded	This scope item introduces Kanban-- a lean production control method within a manufacturing environment. With Kanban, material is staged where it's used. This scope item focus on Kanban replenishment with stock transfer strategies.
Production Operations	Predictive Analytics Model Training - Supply Chain	<a href="#">20N</a>	Upgraded	This scope item covers predictive analytics model training and activation for scenarios in the supply chain.
Production Operations	Process Manufacturing Execution - SAP Digital Manufacturing Cloud	<a href="#">4DN</a>	Upgraded	This scope item shows the end-to-end integrated process between SAP S/4HANA Cloud and SAP Digital Manufacturing Cloud, the manufacturing execution system. The focus of this scope item is process manufacturing using process orders.
Production Operations	Produce and Sell Standard Products - Inventory Management	<a href="#">54U</a>	Changed	This scope item enables production planning and execution of serialized finished goods in make-to-stock scenarios, procurement of required components, as well as sales order processing, quality inspection and invoicing.
Production Operations	Produce and Sell Standard Products - Warehouse Managed	<a href="#">54V</a>	Changed	This scope item enables production planning and execution of finished goods in a make-to-stock scenario, procurement of required components, as well as sales order processing, quality inspection, and invoicing, focusing on warehouse-managed stock.

# Manufacturing

## Production Operations (IV)

Business Area	Scope Item	SID	Status	Short Description
Production Operations	Production Capacity Evaluation and Leveling - Consumer Products	<a href="#">5OI</a>	<b>New</b>	This scope item covers the make-to-stock scenario for a Consumer Products production process with full integration of quality management into discrete manufacturing.
Production Operations	Production Operations with Manufacturing Execution System	<a href="#">1Y5</a>	Upgraded	This scope item provides an integration of SAP S/4HANA Cloud with an on-premise third-party Manufacturing Execution System (MES) to production operation through ALE IDOCs and BAPIs.
Production Operations	Production Operations with SAP Manufacturing Execution	<a href="#">2JN</a>	Upgraded	This scope item provides an integration of SAP S/4HANA Cloud with SAP Manufacturing Execution System (SAP ME) to production operation through ALE IDOCs and BAPI.
Production Operations	Production Order Processing with Third-Party Warehouse Management	<a href="#">2RU</a>	Upgraded	This scope item enables the integration of self-operated warehouses implemented with on-premise third-party warehouse management solutions (WMS) to SAP S/4HANA Cloud to cover production processes for discrete and process industries.
Production Operations	Production Subcontracting - External Processing	<a href="#">BJK</a>	Upgraded	To avoid a capacity bottleneck with your resources or to gain efficiencies within your production, you can process individual production steps (such as operations or sub-operations) with external service providers.
Production Operations	Quality Management in Discrete Manufacturing - Consumer Products	<a href="#">5HK</a>	<b>New</b>	This scope item covers a make-to-stock scenario for a Consumer Products production process with full integration of quality management into discrete manufacturing.
Production Operations	Rework Processing - Stock-Manufactured Material	<a href="#">BJN</a>	Upgraded	This scope item focuses on rework activities and material postings after production execution for the original material (including goods receipt for the product), with an additional rework production order.
Production Operations	Rework Processing - Work-in-Process	<a href="#">BJQ</a>	Upgraded	This process takes care of defective materials within a production order.
Production Operations	Serial Number Management	<a href="#">BLI</a>	Upgraded	This scope item helps you to identify material items in the supply chain and to track these during goods movement. It includes configuration settings for serial number management and provides serial number handling at finished goods level.
Production Operations	Subcontracting	<a href="#">BMY</a>	Upgraded	The subcontracting process involves sending components to a supplier for manufacturing and receiving the finished materials. The seamless and efficient process includes all steps from the initial creation of a purchase order to the invoice management.

# Manufacturing

## Production Operations (V)

Business Area	Scope Item	SID	Status	Short Description
Production Operations	Subcontracting with Ariba Network	<a href="#">5I2</a>	New	The subcontracting process involves sending components to a supplier for manufacturing on the Ariba Network. The seamless and efficient process includes all steps from the initial creation of a purchase order to invoice management.
Production Operations	Subsidiary as Production Unit and Internal Supplier to Headquarters	<a href="#">21T</a>	Upgraded	This scope item runs as a Make-to-Order scenario at a subsidiary. During sales order, delivery, and billing processing, electronic messages are exchanged between subsidiary and headquarters.
Production Operations	Tank Trailer Filling with Residuals	<a href="#">42N</a>	Upgraded	This scope item supports the filling process of the manufactured product into the tank trailer from silos. This filling process also considers the quantity of existing residuals in the tank trailer.
Production Operations	Third-Party Shop Floor Execution - Discrete Industry	<a href="#">3W4</a>	Upgraded	This scope item provides an integration of SAP S/4HANA Cloud with a third-party Manufacturing Execution Systems (MES) to production operation through OData calls and SOAP messages.
Production Operations	Third-Party Shop Floor Execution - Process Industry	<a href="#">3W3</a>	Upgraded	This scope item provides an integration of SAP S/4HANA Cloud with a third-party Manufacturing Execution Systems to production operation through OData calls and SOAP messages.

# Manufacturing Quality Management (I)

Business Area	Scope Item	SID	Status	Short Description
Quality Management	Batch Management	<a href="#">BLF</a>	Upgraded	This scope item lets you work with homogeneous partial quantities of a material or product throughout the logistics quantity and value chain. This includes documentation of material properties, where-used information, and quality status.
Quality Management	Nonconformance Management	<a href="#">2QN</a>	Upgraded	This scope item describes the management of nonconformances. The user enters defect data and documents defect processing. Afterwards, the quality engineer analyzes the current defect situation, and if needed, creates additional, manual inspection lots.
Quality Management	Produce and Sell Standard Products - Inventory Management	<a href="#">54U</a>	Changed	This scope item enables production planning and execution of serialized finished goods in make-to-stock scenarios, procurement of required components, as well as sales order processing, quality inspection and invoicing.
Quality Management	Quality Management for Complaints Against Suppliers	<a href="#">2F9</a>	Upgraded	This scope item describes the management of complaints against suppliers. The quality engineer captures basic information, informs the supplier, and manages defects and tasks. He can also capture the root causes identified by the supplier.
Quality Management	Quality Management for Complaints from Customers	<a href="#">2FA</a>	Upgraded	This scope item describes the management of customer complaints. The quality engineer captures basic information given by the customer and starts a root cause analysis. The engineer can manage defects and causes, corrections, and corrective and preventive actions.
Quality Management	Quality Management in Discrete Manufacturing	<a href="#">1E1</a>	Upgraded	This scope item describes quality inspection in discrete manufacturing. Quality inspection is relevant when a material is received from production or during the production process itself. The result of the inspection may trigger further processing.
Quality Management	Quality Management in Discrete Manufacturing - Consumer Products	<a href="#">5HK</a>	<b>New</b>	This scope item covers a make-to-stock scenario for a Consumer Products production process with full integration of quality management into discrete manufacturing.
Quality Management	Quality Management in Procurement	<a href="#">1FM</a>	Upgraded	This scope item describes quality inspection in procurement. Quality inspection is relevant when a material is received from a supplier. The result of the inspection might trigger further processing, such as return to the supplier for inadequate quality.
Quality Management	Quality Management in Sales	<a href="#">1MP</a>	Upgraded	This scope item describes quality inspection during the sales process (for example, high-quality materials are delivered to a customer). Once the inspection is accepted, the goods issue is posted, and the materials are delivered to the customer.

# Manufacturing

## Quality Management (II)

Business Area	Scope Item	SID	Status	Short Description
Quality Management	Quality Management in Stock Handling	<a href="#">1MR</a>	Upgraded	This scope item implements quality inspection during the storage of goods. Quality inspection is relevant if a warehouse clerk identifies a potential issue with a material in the inventory that needs further investigation.
Quality Management	Quality Management of Internal Problems	<a href="#">2QP</a>	Upgraded	This scope item describes the management of internal problems. The quality engineer captures basic information and starts a root cause analysis. The quality engineer can manage defects and causes, corrections, corrective and preventive actions.
Quality Management	SAP Fiori Analytical Apps for Quality Management	<a href="#">2V0</a>	Upgraded	This scope item provides overview pages and analytical apps for the quality technician and quality engineer showing the most important information related to inspection and task management. Analytical apps enable in-depth analysis of the quality situation.

# SAP Best Practices for SAP S/4HANA Cloud

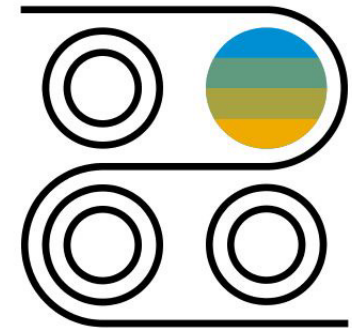
## Cloud Capabilities in Line of Business: R&D/Engineering

### R&D/Engineering

Enterprise Portfolio and Project Management

Product Compliance

Product Lifecycle Management



# R&D/Engineering

## Enterprise Portfolio and Project Management

Business Area	Scope Item	SID	Status	Short Description
Enterprise Portfolio and Project Management	Predictive Analytics Model Training - R&D/Engineering	<a href="#">2Y7</a>	Upgraded	With this scope item, customers can utilize the embedded predictive analytics functionality in the SAP S/4HANA - R&D/Engineering scenarios such as PLM, EPPM, and so on.
Enterprise Portfolio and Project Management	Project Control - Capital Projects	<a href="#">35F</a>	Upgraded	This scenario helps you to manage and control the enterprise-wide project related investments. Starting with project creation, it covers project structuring, budgeting, execution, and monitoring, enabling transparency to all project stakeholders.
Enterprise Portfolio and Project Management	Project Control - Finance	<a href="#">1NT</a>	Upgraded	This scope item supports scenarios where a project accounting structure is created as basis to record project costs and project execution. Project-related purchasing, financial activities, and period-end closing activities can be performed and monitored.
Enterprise Portfolio and Project Management	Project Control - Intercompany	<a href="#">4AU</a>	Upgraded	In this scenario, intercompany processes for EPPM projects are depicted. This involves intercompany postings, creation of intercompany invoices, and simultaneous posting of intercompany invoice to the accounts payables of the ordering company.
Enterprise Portfolio and Project Management	Project Control - Procurement	<a href="#">4RF</a>	Changed	This scope item enables you to plan, trigger, and monitor procurement of materials and services that are required for a successful project execution. This upfront procurement planning aligns with the WBS elements to ensure on-time delivery of the requested materials or services.
Enterprise Portfolio and Project Management	Project Control - Research and Development Projects	<a href="#">35E</a>	Upgraded	This scenario describes a project where the research and development activities related to the design of a new product are managed.
Enterprise Portfolio and Project Management	Project Control - Sales	<a href="#">4I9</a>	Upgraded	This scope item depicts the integration of projects with the sales orders that enable the direct flow of revenues to the projects. The margin can be easily analyzed along with the incurred costs.
Enterprise Portfolio and Project Management	Project Data Replication to Central Finance	<a href="#">3W1</a>	Upgraded	To centralize your financial processes, this scope item assists you in replicating the project accounting structure of your subsidiary running on SAP S/4HANA Cloud to your corporate SAP S/4HANA Central Finance system.
Enterprise Portfolio and Project Management	Project Review	<a href="#">1YF</a>	Upgraded	This scope item helps you to determine the right projects to work on by keeping all project stakeholders (such as the steering committee) informed, enabling the review and approval of project milestones, and accelerating central project review or ranking meetings.

# R&D/Engineering

## Product Compliance

Business Area	Scope Item	SID	Status	Short Description
Product Compliance	Assess Dangerous Goods for a Product	<a href="#">3FC</a>	Upgraded	Transporting chemical products on public transportation routes requires product classification for each applicable dangerous goods regulation. This scope item provides the means to identify these regulations and to classify your products efficiently.
Product Compliance	Assess Marketability of a Product	<a href="#">31H</a>	Changed	Placing chemical products on markets with complex chemical regulatory landscapes requires an efficient system support for chemical compliance assessment. This scope item covers the main process steps for the assessment of the marketability of a product.
Product Compliance	Chemical Compliance Approval for Purchased Material and Supplier	<a href="#">31G</a>	Upgraded	This scope item describes the compliance assessment process for purchased materials and suppliers. Only suppliers and purchased materials which fulfill the requirements can be approved.
Product Compliance	Chemical Compliance in the Value Chain	<a href="#">31J</a>	Changed	This scope item describes the compliance marketability check in sales order processing and during outbound delivery processes. A compliance marketability check is executed when a material is defined as relevant for compliance.
Product Compliance	Dangerous Goods in the Value Chain	<a href="#">3G8</a>	Changed	This scope item describes the dangerous goods transport check in sales order and sales quotation. The check is performed for all compliance-relevant products. For chemical products that are added to sales orders, this ensures that an appropriate dangerous good classification is established.
Product Compliance	Manage Safety Data Sheets for Products	<a href="#">3VR</a>	Upgraded	This scope item lets you maintain final safety data sheets as documents for products.
Product Compliance	Safety Data Sheets in the Value Chain	<a href="#">3VQ</a>	Changed	Placing chemical products on the market requires an efficient system support for handling mandatory documentation as defined by regulators. This scope item focuses on the maintenance of Safety Data Sheets for products during Sales processes.
Product Compliance	Substance Volume Tracking	<a href="#">4OL</a>	Changed	Substance volume tracking allows you to identify risks by tracking, monitoring, and calculating volumes for substances that are imported into, produced within, or exported to a country or region.
Product Compliance	Supplier Compliance in the Value Chain	<a href="#">5OJ</a>	<b>New</b>	This scope item enables the integration of a supplier check in purchasing processes performed by the product stewardship department.



# R&D/Engineering

## Product Lifecycle Management (I)

Business Area	Scope Item	SID	Status	Short Description
Product Lifecycle Management	Advanced Ingredient Replacement for Recipes	<a href="#">22R</a>	Upgraded	This scope item provides advanced recipe analysis allowing efficient ingredient replacement for recipes powered by Recipe Finder.
Product Lifecycle Management	Basic Handover of Bill of Material	<a href="#">1ZI</a>	Upgraded	Handover to Manufacturing allows the user to create a Manufacturing Bill of Material from an Engineering Bill of Material within one step.
Product Lifecycle Management	Embedded Software Management	<a href="#">2G6</a>	Upgraded	Embedded Software Management enables the Systems Engineer to manage software parts of products together with hardware components in a Bill of Material.
Product Lifecycle Management	Engineer-to-Order Production with Variant Configuration	<a href="#">4R8</a>	Upgraded	This scope item supports the engineer-to-order process for configurable materials.
Product Lifecycle Management	Engineering Bill of Material - Change Master Management	<a href="#">1R3</a>	Upgraded	This scope item covers two central PLM BOM processes: setup and release steps for change master controlled Engineering BOM, and change iteration.
Product Lifecycle Management	Engineering Bill of Material - Mass Change	<a href="#">1R5</a>	Upgraded	This scope item covers the follow-up material and component date effectivity-controlled mass change process of one or more bills of materials.
Product Lifecycle Management	Engineering Bill of Material - Versions Management	<a href="#">1NR</a>	Upgraded	This scope item uses a new versioning technology. An engineering bill of material (EBOM) is a type of bill of material that reflects the product as designed by engineering, referred to as the as-designed bill of material.
Product Lifecycle Management	Engineering Change Management with Change Records	<a href="#">1NF</a>	Upgraded	SAP Engineering Change Management with Change Records flexibly supports the management of engineering changes with workflow support.
Product Lifecycle Management	Formulation - Recipe Development	<a href="#">1QC</a>	Upgraded	Manage and develop product data for products based on recipes.
Product Lifecycle Management	Handover Engineering Product Structures	<a href="#">3NE</a>	Upgraded	This scope item enables you to hand over a bill of materials or a product structure from a given source usage type (for example, Engineering) to a defined target usage type (for example, Production).
Product Lifecycle Management	Handover of Product Information to SAP Asset Intelligence Network	<a href="#">2WK</a>	Upgraded	This business process enables fast creation of the SAP Asset Intelligence Network model based on available product information by transferring this data from manufacturing to service.

# R&D/Engineering

## Product Lifecycle Management (II)

Business Area	Scope Item	SID	Status	Short Description
Product Lifecycle Management	Intelligent Content Processing for Document Classification	<a href="#">2YC</a>	Upgraded	Intelligent Content Processing for Document classification is an automation of the Documents to Classification process that leverages intelligent services (Machine Learning).
Product Lifecycle Management	Make-to-Order Production with Variant Configuration	<a href="#">1YT</a>	Upgraded	This scope item shows a Make-to-Order Production scenario using the Advanced Variant Configuration for an efficient state-of-the-art configuration of a material ordered by a customer. It covers single-level and multi-level configurable materials.
Product Lifecycle Management	Make-to-Stock Production with Variant Configuration	<a href="#">21D</a>	Upgraded	This scope item shows the Make-to-Stock Production with Variant Configuration in which Advanced Variant Configuration enables efficient state-of-the-art configuration for product variants that reflect common definitions of a configurable material.
Product Lifecycle Management	Manage Documents	<a href="#">22P</a>	Upgraded	This scope item provides an intuitive way to search, create, and edit documents associated to a business object, such as a product.
Product Lifecycle Management	Procurement of Materials with Variant Configuration	<a href="#">2XU</a>	Upgraded	This scope item describes the process of externally procuring materials using the Advanced Variant Configuration feature, required in the manufacturing process.
Product Lifecycle Management	Product Structure Management	<a href="#">3ND</a>	Upgraded	This scope item lets you structure a product as a set of hierarchically ordered objects in SAP S/4HANA Cloud. Additionally, the definition and maintenance of product structures has been optimized for SAP S/4HANA Cloud.
Product Lifecycle Management	Product Structure Template Management	<a href="#">35Q</a>	Upgraded	This scope item enables you to build up templates to structure a product as a set of hierarchically ordered objects in SAP S/4HANA Cloud.
Product Lifecycle Management	Recipe Handover to Production - Bill of Material	<a href="#">1QG</a>	Upgraded	This scope item covers the synchronization of development results with production by synchronizing the recipe to the bill of material.
Product Lifecycle Management	Requirements Driven Development	<a href="#">2G4</a>	Upgraded	Requirements Driven Development enables the user to link requirements to product life-cycle management objects such as document info records, materials, and configurable BOMs.
Product Lifecycle Management	Setup Configurable Model using Variant Configuration	<a href="#">22T</a>	Upgraded	Advanced variant configuration enables efficient modeling of your configurable product model with a configurable BOM.

# R&D/Engineering

## Product Lifecycle Management (III)

Business Area	Scope Item	SID	Status	Short Description
Product Lifecycle Management	Software Compatibility Management	<a href="#">2G5</a>	Upgraded	Software Compatibility Management facilitates the check of compatibility constraints between the software and the hardware components.
Product Lifecycle Management	Specification Management for Recipes	<a href="#">1QA</a>	Upgraded	This scope item supports the creation of specifications for product development and management.

# SAP Best Practices for SAP S/4HANA Cloud

## Cloud Capabilities in Line of Business: Supply Chain

### Supply Chain

Order Promising

Advanced Order Promising

Inventory

Logistics Material Identification

Warehousing

Delivery and Transportation



# Supply Chain

## Order Promising

Business Area	Scope Item	SID	Status	Short Description
Order Promising	Automotive Supply to Customer - Inventory Management	<a href="#">55F</a>	Changed	This scope item describes an end-to-end process for automotive suppliers with focus on scheduling agreements for sales, Just-In-Time processing, scheduling agreements for purchasing, repetitive manufacturing, delivery, and self-billing (optional).
Order Promising	Basic Available-to-Promise Processing	<a href="#">2LN</a>	Upgraded	This scope item comprises features for executing product availability checks and backorder processing. Furthermore, the scope item offers mechanisms for performing characteristic catalog maintenance and for reviewing the results of availability checks.
Order Promising	Produce and Sell Standard Products - Inventory Management	<a href="#">54U</a>	Changed	This scope item enables production planning and execution of serialized finished goods in make-to-stock scenarios, procurement of required components, as well as sales order processing, quality inspection and invoicing.
Order Promising	Produce and Sell Standard Products - Warehouse Managed	<a href="#">54V</a>	Changed	This scope item enables production planning and execution of finished goods in a make-to-stock scenario, procurement of required components, as well as sales order processing, quality inspection, and invoicing, focusing on warehouse-managed stock.

# Supply Chain

## Advanced Order Promising

Business Area	Scope Item	SID	Status	Short Description
Advanced Order Promising	Advanced Available-to-Promise Processing	<a href="#">1JW</a>	Changed	The Advanced Available-to-Promise Processing scope item comprises features for executing availability checks against product allocation, manually prioritizing order requirements, and performing plant substitution.

# Supply Chain Inventory (I)

Business Area	Scope Item	SID	Status	Short Description
Inventory	Acquisition of Freight Invoices	<a href="#">4GH</a>	Upgraded	This scope item covers the purchase order creation for freight.
Inventory	Automated Invoice Settlement	<a href="#">2LH</a>	Upgraded	This scope item can be used to procure goods and enables the user to settle goods receipts directly, without an invoice from a supplier. The system posts the invoice document automatically based on the data in the purchase order and goods receipt.
Inventory	Automated Purchase-to-Pay with SAP Ariba Commerce Automation	<a href="#">J82</a>	Upgraded	This scope item (for purchasing experts and accounts payable accountants) lets you focus on value-driving activities with SAP Ariba Commerce Automation integration with your suppliers in the Ariba Network, and lets you drive productivity with nearly touchless orders and invoices.
Inventory	Automotive Supply to Customer - Inventory Management	<a href="#">55F</a>	Changed	This scope item describes an end-to-end process for automotive suppliers with focus on scheduling agreements for sales, Just-In-Time processing, scheduling agreements for purchasing, repetitive manufacturing, delivery, and self-billing (optional).
Inventory	Batch Management	<a href="#">BLF</a>	Upgraded	This scope item lets you work with homogeneous partial quantities of a material or product throughout the logistics quantity and value chain. This includes documentation of material properties, where-used information, and quality status.
Inventory	Complementary Procurement Functions	<a href="#">2TW</a>	Upgraded	This scope item provides seamless processes for the procurement of operating supplies as well as for batch and serial number managed material, including the steps from the creation of a purchase order to the invoice creation.
Inventory	Core Inventory Management	<a href="#">BMC</a>	Upgraded	The scope item describes different transfer posting scenarios as well as stock and goods movement analysis.
Inventory	Cross-Plant Transfer Posting	<a href="#">1P7</a>	Upgraded	This scope item includes two processes for stock transfer between two plants in a company code: One-step stock transfer posting and two-step stock transfer posting.
Inventory	Delivery Insights enabled by IoT	<a href="#">4IH</a>	Upgraded	This scope item enables you to derive real-time insights about your delivery processes by leveraging Internet of Things data. By constantly monitoring all connected entities, the system detects critical issues and proactively notifies the relevant parties.
Inventory	Direct Procurement with Inbound Delivery	<a href="#">2TX</a>	Upgraded	This scope item enables the user to order direct materials using inbound deliveries. It ensures an efficient process including all steps from the initial creation of a purchase order to the invoice management.

# Supply Chain Inventory (II)

Business Area	Scope Item	SID	Status	Short Description
Inventory	Electronic Movement Control System	<a href="#">4O0</a>	Upgraded	This scope item enables you to interchange Electronic Movement and Control System messages with the tax authorities via SAP Excise Tax Management.
Inventory	Enablement of SAP Excise Tax Management	<a href="#">4LO</a>	Upgraded	This scope item enables you to integrate with SAP Excise Tax Management.
Inventory	Logistics with Third-Party Warehouse Management	<a href="#">1ZQ</a>	Upgraded	This scope item enables the integration of self-operated warehouses implemented with on-premise third-party warehouse management solutions (Warehouse Management Systems, WMS) to SAP S/4HANA Cloud.
Inventory	Physical Inventory - Cycle Counting	<a href="#">4LU</a>	Upgraded	The cycle counting method is a special physical inventory procedure where inventory is counted at regular intervals within a fiscal year.
Inventory	Physical Inventory - Inventory Count and Adjustment	<a href="#">BML</a>	Upgraded	This scope item describes the process of making necessary adjustments to stock on hand after a physical count.
Inventory	Procurement of Direct Materials	<a href="#">J45</a>	Upgraded	This scope item enables the user to order direct materials. A seamless process is incorporated and ensures a stable and efficient process including all steps from the initial creation of a purchase requisition to the invoice creation and handling.
Inventory	Produce and Sell Standard Products - Inventory Management	<a href="#">54U</a>	Changed	This scope item enables production planning and execution of serialized finished goods in make-to-stock scenarios, procurement of required components, as well as sales order processing, quality inspection and invoicing.
Inventory	Production Order Processing with Third-Party Warehouse Management	<a href="#">2RU</a>	Upgraded	This scope item enables the integration of self-operated warehouses implemented with on-premise third-party warehouse management solutions (WMS) to SAP S/4HANA Cloud to cover production processes for discrete and process industries.
Inventory	Quality Management for Complaints Against Suppliers	<a href="#">2F9</a>	Upgraded	This scope item describes the management of complaints against suppliers. The quality engineer captures basic information, informs the supplier, and manages defects and tasks. He can also capture the root causes identified by the supplier.
Inventory	Quality Management for Complaints from Customers	<a href="#">2FA</a>	Upgraded	This scope item describes the management of customer complaints. The quality engineer captures basic information given by the customer and starts a root cause analysis. The engineer can manage defects and causes, corrections, and corrective and preventive actions.



# Supply Chain Inventory (III)

Business Area	Scope Item	SID	Status	Short Description
Inventory	Quality Management in Procurement	<a href="#">1FM</a>	Upgraded	This scope item describes quality inspection in procurement. Quality inspection is relevant when a material is received from a supplier. The result of the inspection might trigger further processing, such as return to the supplier for inadequate quality.
Inventory	Quality Management in Sales	<a href="#">1MP</a>	Upgraded	This scope item describes quality inspection during the sales process (for example, high-quality materials are delivered to a customer). Once the inspection is accepted, the goods issue is posted, and the materials are delivered to the customer.
Inventory	Quality Management in Stock Handling	<a href="#">1MR</a>	Upgraded	This scope item implements quality inspection during the storage of goods. Quality inspection is relevant if a warehouse clerk identifies a potential issue with a material in the inventory that needs further investigation.
Inventory	Return to Supplier	<a href="#">BMK</a>	Upgraded	This scope item enables the user to return goods to a supplier. To process supplier return business transactions, you can choose between two process variants: Basic processing or Advanced Returns Management.
Inventory	SAP Fiori Analytical Apps for Inventory and Warehouse Management	<a href="#">BGG</a>	Upgraded	This scope item covers SAP Fiori analytical apps for inventory and warehouse management.
Inventory	Stock Transfer with Delivery	<a href="#">BME</a>	Upgraded	Transfer requested material automatically by MRP or manually by a buyer from one plant to another within the same company code.
Inventory	Stock Transfer without Delivery	<a href="#">BMH</a>	Upgraded	This scope item describes the business process of stock transfer without deliveries. Warehouse clerks and buyers can transfer material requested automatically by MRP or manually by a buyer from one plant to another within the same company code.
Inventory	Subcontracting	<a href="#">BMY</a>	Upgraded	The subcontracting process involves sending components to a supplier for manufacturing and receiving the finished materials. The seamless and efficient process includes all steps from the initial creation of a purchase order to the invoice management.
Inventory	Supplier Consignment	<a href="#">2LG</a>	Upgraded	By using the consignment process for procurement, the supplier provides the material and stores it at site of the procuring party. The supplier maintains the legal owner of the material until it is withdrawn from the consignment stores.

# Supply Chain

## Logistics Material Identification

Business Area	Scope Item	SID	Status	Short Description
Logistics Material Identification	Batch Management	<a href="#">BLF</a>	Upgraded	This scope item lets you work with homogeneous partial quantities of a material or product throughout the logistics quantity and value chain. This includes documentation of material properties, where-used information, and quality status.
Logistics Material Identification	Handling Unit Management	<a href="#">4MM</a>	Changed	This scope item covers the functions of handling unit management in Logistics. It includes packaging in outbound, inbound, inventory and production for handling of materials packed in a handling unit, either manually or automatically.
Logistics Material Identification	Serial Number Management	<a href="#">BLL</a>	Upgraded	This scope item helps you to identify material items in the supply chain and to track these during goods movement. It includes configuration settings for serial number management and provides serial number handling at finished goods level.

# Supply Chain Warehousing (I)

Business Area	Scope Item	SID	Status	Short Description
Warehousing	Produce and Sell Standard Products - Warehouse Managed	<a href="#">54V</a>	Changed	This scope item enables production planning and execution of finished goods in a make-to-stock scenario, procurement of required components, as well as sales order processing, quality inspection, and invoicing, focusing on warehouse-managed stock.
Warehousing	Quality Management in Warehousing	<a href="#">3M0</a>	Changed	This process allows you to inspect products delivered from external suppliers and from production before putaway in the warehouse.
Warehousing	Replenishment in Warehousing	<a href="#">4A2</a>	Upgraded	This scope item helps you to improve warehouse picking efficiency by performing planned or automatic replenishment of your fixed bins.
Warehousing	Resource Management in Warehousing	<a href="#">3W0</a>	Upgraded	This scope item helps you to increase the efficiency of warehouse processes by using resource management and mobile data entry.
Warehousing	SAP EWM Integration - Batch Management	<a href="#">2VN</a>	Upgraded	This scope item enables a business process integration between SAP S/4HANA Cloud and on-premise SAP Extended Warehouse Management (EWM). It describes the basic integration of batches to the SAP EWM system.
Warehousing	SAP EWM Integration - Customer Returns	<a href="#">2VO</a>	Upgraded	This scope item enables a business process integration between SAP S/4HANA Cloud and on-premise SAP Extended Warehouse Management to demonstrate returns order processing.
Warehousing	SAP EWM Integration - Delivery-Based Production Integration	<a href="#">2VM</a>	Upgraded	This scope item enables a business process integration between SAP S/4HANA Cloud and on-premise SAP Extended Warehouse Management. You can integrate warehouse execution with manufacturing operations using a delivery-based production integration.
Warehousing	SAP EWM Integration - Inbound Processing from Supplier	<a href="#">2VJ</a>	Upgraded	This scope item enables a business process integration between SAP S/4HANA Cloud and on-premise SAP Extended Warehouse Management. It allows you to purchase goods from suppliers and subsequently execute the physical goods movements in your warehouse.
Warehousing	SAP EWM Integration - Outbound Processing to Customer	<a href="#">2VK</a>	Upgraded	This scope item enables a business process integration between SAP S/4HANA Cloud and on-premise SAP Extended Warehouse Management. It allows you to ship ordered goods to external customers.
Warehousing	SAP EWM Integration - Stock Transport Orders	<a href="#">2VL</a>	Upgraded	The business process integration between SAP S/4HANA Cloud and on-premise SAP Extended Warehouse Management enables you to execute a stock transfer process using stock transport orders.

# Supply Chain Warehousing (II)

Business Area	Scope Item	SID	Status	Short Description
Warehousing	SAP EWM Integration - Warehouse Stock Handling	<a href="#">2YL</a>	Upgraded	This scope item enables a business process integration between SAP S/4HANA Cloud and on-premise SAP Extended Warehouse Management to demonstrate warehouse stock handling such as scrapping, physical inventory, and initial stock upload.
Warehousing	Warehouse Ad Hoc Goods Issue	<a href="#">3BT</a>	Upgraded	This scope item can be used to post unplanned goods issues without reference to outbound deliveries. It can be used for various use cases, such as scrapping and goods issue to another storage location.
Warehousing	Warehouse Goods Receipt from Repetitive Manufacturing	<a href="#">41U</a>	Upgraded	This scope item helps you to improve on-time delivery with goods receipt from repetitive manufacturing into the warehouse.
Warehousing	Warehouse Inbound Processing	<a href="#">3BR</a>	Upgraded	This process enables you to receive products and to store them in your warehouse. The scope item allows different variants of inbound processing such as an inbound from supplier, inbound from other storage location, and inbound from other plant.
Warehousing	Warehouse Inbound Processing with Synchronous Goods Receipt	<a href="#">5HN</a>	Upgraded	This scope item describes the synchronous goods receipt for external procurement process, where the procured products can post the goods receipt directly into the warehouse without involving delivery documents.
Warehousing	Warehouse Internal Inspections	<a href="#">5OK</a>	<b>New</b>	This scope item shows how to manages quality inspection activities in stock handling processes within the warehouse.
Warehousing	Warehouse Internal Repacking	<a href="#">3BW</a>	Upgraded	This scope item allows you to repack stock in your warehouse.
Warehousing	Warehouse Kanban Supply into Production	<a href="#">3VT</a>	Upgraded	This scope item allows you to supply material from your warehouse to production by leveraging the Kanban replenishment method as part of lean manufacturing.
Warehousing	Warehouse Outbound Processing	<a href="#">3BS</a>	Changed	By performing this warehouse process, you can pick and pack products and send them from your warehouse.
Warehousing	Warehouse Physical Inventory	<a href="#">3BX</a>	Upgraded	In this scope item, you can plan, conduct, and confirm regular counts of actual product quantities in the warehouse and compare the physical stock to the data in the system.
Warehousing	Warehouse Posting Changes	<a href="#">3BU</a>	Upgraded	With this scope item, you can make posting changes (for example, unrestricted to blocked stock) in the warehouse.

# Supply Chain

## Warehousing (III)

Business Area	Scope Item	SID	Status	Short Description
Warehousing	Warehouse Production Integration	<a href="#">3DV</a>	Changed	This scope item allows you to integrate the supply of products to production and the receipt of finished products from production into your warehouse.
Warehousing	Warehouse Production Integration with Synchronous Goods Receipt	<a href="#">5HO</a>	Changed	This scope item describes the integration of warehouse production with synchronous goods receipt, where the produced products can post goods receipts directly into the warehouse without involving delivery documents.

# Supply Chain

## Delivery and Transportation

Business Area	Scope Item	SID	Status	Short Description
Delivery and Transportation	Determination of Geocoordinates, Distances and Durations	<a href="#">46P</a>	<b>New</b>	This scenario supports the determination of geocoordinates for locations, distances, and durations for pairs of locations within Transportation Management.
Delivery and Transportation	Manual Transportation Planning – Inbound	<a href="#">5OS</a>	<b>New</b>	This scope item supports transportation planning, execution, and monitoring in SAP S/4HANA Cloud.
Delivery and Transportation	Manual Transportation Planning – Outbound	<a href="#">4MO</a>	<b>New</b>	This scope item supports your company’s transportation planning, execution, and monitoring in SAP S/4HANA Cloud.
Delivery and Transportation	Order-Based Transportation Consolidation – Outbound	<a href="#">3EP</a>	Changed	Order-Based Transportation Consolidation supports transportation execution and monitoring in SAP S/4HANA Cloud in connection with a decentralized transportation management system.

# SAP Best Practices for SAP S/4HANA Cloud

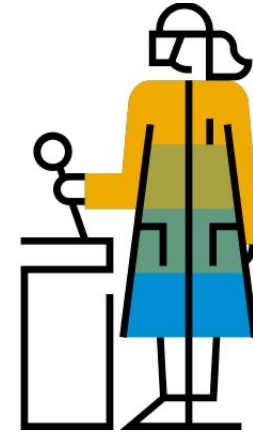
## Cloud Capabilities in Line of Business: Asset Management

### Asset Management

Asset Operations and Maintenance

Environment, Health, and Safety

Maintenance Management



# Asset Management

## Asset Operations and Maintenance

Business Area	Scope Item	SID	Status	Short Description
Asset Operations and Maintenance	Maintenance Resource Scheduling	<a href="#">43R</a>	Changed	Resource scheduling provides you with insights into your maintenance workload and available capacities for current and upcoming maintenance activities.



# Asset Management

## Environment, Health, and Safety

Business Area	Scope Item	SID	Status	Short Description
Environment, Health, and Safety	Compliance Management for Environment, Health and Safety	<a href="#">4C8</a>	Upgraded	Reduce operational risk with compliance management functionality.
Environment, Health, and Safety	Emissions Management	<a href="#">4XD</a>	Upgraded	This scope item helps you manage compliance with emission-related environmental regulations.
Environment, Health, and Safety	Lean Incident Management Reporting	<a href="#">3FP</a>	Upgraded	With this scope item, you can fulfill your incident reporting requirements by recording and processing incidents, near misses, and safety observations.
Environment, Health, and Safety	Lean Management of Change Process	<a href="#">4YX</a>	Upgraded	With this scope item, you can manage operational changes to equipment, materials, chemicals, operating conditions, procedures, and organizational structure.
Environment, Health, and Safety	Product Footprint Management	<a href="#">5IM</a>	<b>New</b>	This scope item enables you to integrate and view product footprints.

# Asset Management

## Maintenance Management

Business Area	Scope Item	SID	Status	Short Description
Maintenance Management	Corrective Maintenance	<a href="#">BH1</a>	Upgraded	This process describes the maintenance of technical objects when a breakdown or failure occurs.
Maintenance Management	Emergency Maintenance	<a href="#">BH2</a>	Upgraded	Process to document unforeseen and urgent maintenance work by creating and confirming an order in the same operation.
Maintenance Management	Improvement Maintenance	<a href="#">4VT</a>	Changed	This business process allows you to perform and track work that leads to improvement of assets such as redesign, upgrades, and so on.
Maintenance Management	Integration with Asset Central Foundation	<a href="#">3YE</a>	Changed	This scope item describes the steps required to integrate SAP S/4HANA Cloud with asset central foundation, which is based on the SAP Business Technology Platform.
Maintenance Management	Operational and Overhead Maintenance	<a href="#">4WM</a>	Changed	This scope item allows you to record activities such as training, development, documentation, routine work, and so on.
Maintenance Management	Preventive Maintenance	<a href="#">BJ2</a>	Upgraded	This scope item describes the processes for preventing system breakdowns that have high repair and production breakdown costs.
Maintenance Management	Proactive Maintenance	<a href="#">4HI</a>	Changed	Proactive maintenance allows you to prevent the failure or breakdown of an asset by implementing preventive maintenance and using proactive measures.
Maintenance Management	Reactive Maintenance	<a href="#">4HH</a>	Changed	This is a comprehensive nine-phase process to support maintenance from the creation of a maintenance request to its completion. Reactive maintenance process allows you to perform maintenance of an assets whenever a breakdown or a failure occurs.
Maintenance Management	SAP Maintenance Assistant	<a href="#">4RV</a>	Changed	SAP Maintenance Assistant is a mobile solution that enables a maintenance technician to perform their daily tasks related to asset management in SAP S/4HANA Cloud.

# SAP Best Practices for SAP S/4HANA Cloud

## Cloud Capabilities in Line of Business: Sales

### Sales

Order and Contract Management



# Sales

## Order and Contract Management (I)

Business Area	Scope Item	SID	Status	Short Description
Order and Contract Management	Accelerated Customer Returns	<a href="#">BKP</a>	Upgraded	This scope item encompasses the end-to-end returns and compensation process with automated creation of all follow-up documents.
Order and Contract Management	Accelerated Third-Party Returns	<a href="#">1Z3</a>	Upgraded	In this scope item, materials are shipped to the customer via third-party delivery. The customer returns these materials directly to the supplier.
Order and Contract Management	Accelerated Third-Party Returns from Seller to Supplier	<a href="#">3QD</a>	Upgraded	This scope item outlines the accelerated customer returns process from seller to supplier while using EDI based message communication.
Order and Contract Management	Analytics for Sales - Central Stock with Returns	<a href="#">2QS</a>	Upgraded	This scope item provides sales-related Core Data Services (CDS) views to leverage extensibility and reporting functionality.
Order and Contract Management	Automation of Order-to-Invoice with Ariba Network	<a href="#">4A1</a>	Upgraded	This scope item lets you (as the seller) exchange your sales data with buyers from Ariba Network automatically. Order requests, advanced shipping notices, and invoice data are received and sent digitally.
Order and Contract Management	Automotive Supply to Customer - Inventory Management	<a href="#">55F</a>	Changed	This scope item describes an end-to-end process for automotive suppliers with focus on scheduling agreements for sales, Just-In-Time processing, scheduling agreements for purchasing, repetitive manufacturing, delivery, and self-billing (optional).
Order and Contract Management	B2B Order Fulfillment with SAP Commerce Cloud	<a href="#">2TY</a>	Changed	This scope item enables the integration of SAP Commerce Cloud with SAP S/4HANA Cloud for B2B use cases. Sales orders and service orders are placed in SAP Commerce Cloud and replicated to SAP S/4HANA Cloud for order fulfillment.
Order and Contract Management	Billing of Costs Between Affiliated Companies	<a href="#">3ZB</a>	Upgraded	With this scope item, a company can bill costs to an affiliate, creating a supplier invoice.
Order and Contract Management	Chemical Compliance in the Value Chain	<a href="#">31J</a>	Changed	This scope item describes the compliance marketability check in sales order processing and during outbound delivery processes. A compliance marketability check is executed when a material is defined as relevant for compliance.
Order and Contract Management	Combined Invoice – Goods and Service Items	<a href="#">2UV</a>	Upgraded	This scenario covers the need to charge a customer for the goods sold and the services provided.

# Sales

## Order and Contract Management (II)

Business Area	Scope Item	SID	Status	Short Description
Order and Contract Management	Convergent Billing	<a href="#">1MC</a>	Upgraded	The Convergent Billing process enables the user to create billing documents that combine data from various sources in one billing document.
Order and Contract Management	Create Sales Orders from Unstructured Data	<a href="#">4X9</a>	Upgraded	This scope item enables you to automatically create sales orders from unstructured data.
Order and Contract Management	Credit Memo Processing	<a href="#">1EZ</a>	Upgraded	You can apply a credit to a customer account once you determine if a customer has been overcharged because of a pricing or sales tax rate error. The standard credit memo request can be created as stand-alone or with reference to a sales order or billing document.
Order and Contract Management	Customer Consignment	<a href="#">1IU</a>	Upgraded	This scope item describes the process for standard customer consignment processing. The products shipped to the customer are still owned by the company until they are sold by the customer to a third party. The materials, which are usually stored in the customer store or warehouse, are posted in a stock (consignment stock) that is assigned to the corresponding customer. This allows the current customer stock to be viewed at any time.
Order and Contract Management	Customer Returns	<a href="#">BDD</a>	Upgraded	This scope item describes sales order returns processing.
Order and Contract Management	Dangerous Goods in the Value Chain	<a href="#">3G8</a>	Changed	This scope item describes the dangerous goods transport check in sales order and sales quotation. The check is performed for all compliance-relevant products. For chemical products that are added to sales orders, this ensures that an appropriate dangerous good classification is established.
Order and Contract Management	Debit Memo Processing	<a href="#">1F1</a>	Upgraded	The debit memo process is used for applying a debit to a customer account once a determination has been made that a customer has been undercharged as a result of a pricing or sales tax rate error. The standard debit memo request can be created as stand-alone or with reference to a sales order or billing document.
Order and Contract Management	Delivery Insights enabled by IoT	<a href="#">4IH</a>	Upgraded	This scope item enables you to derive real-time insights about your delivery processes by leveraging Internet of Things data. By constantly monitoring all connected entities, the system detects critical issues and proactively notifies the relevant parties.
Order and Contract Management	Delivery Processing without Order Reference	<a href="#">1MI</a>	Upgraded	This scope item describes the entire process sequence for a standard delivery process where the customer does not need to create a preceding order (delivery without order reference). The business process encompasses all the steps from creating a delivery, to clearing a customer's account once payment is received.

# Sales

## Order and Contract Management (III)

Business Area	Scope Item	SID	Status	Short Description
Order and Contract Management	Delivery of Goods on Behalf of Another Company	<a href="#">2UW</a>	Upgraded	In this process, the company uses a third-party vendor to ship the goods directly to the customer. The company then invoices the customer.
Order and Contract Management	Digital Payments - Sales	<a href="#">1Z1</a>	Upgraded	This scope item enables the integration between SAP digital payments and sales documents in an SAP S/4HANA system.
Order and Contract Management	Engineer-to-Order Production with Variant Configuration	<a href="#">4R8</a>	Upgraded	This scope item supports the engineer-to-order process for configurable materials.
Order and Contract Management	Extended Intercompany Processes for Sales	<a href="#">1WO</a>	Upgraded	This scope item enables the sales-related intercompany business processes.
Order and Contract Management	External Billing	<a href="#">1Z6</a>	Upgraded	This scope item enables the use of the external billing interface.
Order and Contract Management	Free Goods Processing	<a href="#">BKA</a>	Upgraded	This scope item describes the entire process sequence for a standard sales process with a customer, including free goods. The business process encompasses all steps from creating an order to the clearing of a customer account after payment is received.
Order and Contract Management	Free of Charge Delivery	<a href="#">BDA</a>	Upgraded	This scope item describes the process of providing goods to a customer at no cost (Free-of-Charge Sales Order).
Order and Contract Management	Integration of Sales with External Buyers	<a href="#">2EL</a>	Upgraded	Digitize your sales data exchange with buyers using a set of SOAP APIs. Use this scope item as starting point for mapping towards your supplier's EDI messages. In a Two-Tier scenario, you receive purchase orders and return orders from your subsidiary.
Order and Contract Management	Intercompany Process for Customer Returns	<a href="#">2F4</a>	Upgraded	This scope item allows the company to manage customer returns and refunds using affiliated plants in an effective and efficient way. This scope item enhances the "Accelerated Customer Returns (BKP)" scope item with intercompany capabilities.
Order and Contract Management	Intercompany Sales Order Processing - Domestic	<a href="#">1HO</a>	Upgraded	This scope item describes the process for the intercompany sales when an affiliate company directly delivers trading goods to customer. This intercompany sales scenario applies only when the ordering and delivering companies are in same country/region.

# Sales

## Order and Contract Management (IV)

Business Area	Scope Item	SID	Status	Short Description
Order and Contract Management	Intercompany Sales Order Processing - International	<a href="#">1MX</a>	Upgraded	This scope item enables intercompany international transactions. As an example, the functionality is leveraged when a company (located in a specific country) sells products to a customer in the same country. The products are shipped from a separate location belonging to a company located in a different country.
Order and Contract Management	Internal Commissions Settlement with SAP Sales Cloud	<a href="#">3TD</a>	Upgraded	This scope item covers the settlement of internal commissions received from SAP Sales Cloud for the payout of the commission amount to an employee.
Order and Contract Management	Invoice Correction Process with Credit Memo	<a href="#">BKL</a>	Upgraded	You apply a credit to a customer account if you determine a customer is overcharged because of a pricing or sales tax rate error. The credit memo request is created with reference to the incorrect invoice previously issued to the customer.
Order and Contract Management	Invoice Correction Process with Debit Memo	<a href="#">BDQ</a>	Upgraded	This process is used for applying a debit to a customer account if a customer has been undercharged because of a pricing or sales tax rate error. The debit memo request is created with reference to the incorrect invoice.
Order and Contract Management	Logistics with Third-Party Warehouse Management	<a href="#">1ZQ</a>	Upgraded	This scope item enables the integration of self-operated warehouses implemented with on-premise third-party warehouse management solutions (Warehouse Management Systems, WMS) to SAP S/4HANA Cloud.
Order and Contract Management	Opportunity-to-Order with SAP Cloud for Customer	<a href="#">1VP</a>	Changed	This scope item describes the steps required to integrate SAP S/4HANA Cloud with SAP Sales Cloud using SAP Cloud Integration.
Order and Contract Management	Planning Apps for Sales	<a href="#">1O0</a>	Upgraded	This scope item covers sales planning apps for the Sales Manager.
Order and Contract Management	Predictive Analytics Model Training - Sales	<a href="#">2YJ</a>	Upgraded	With this scope item, you can utilize the embedded predictive analytics functionality in the SAP S/4HANA Sales business scenarios.
Order and Contract Management	Produce and Sell Standard Products - Inventory Management	<a href="#">54U</a>	Changed	This scope item enables production planning and execution of serialized finished goods in make-to-stock scenarios, procurement of required components, as well as sales order processing, quality inspection and invoicing.
Order and Contract Management	Produce and Sell Standard Products - Warehouse Managed	<a href="#">54V</a>	Changed	This scope item enables production planning and execution of finished goods in a make-to-stock scenario, procurement of required components, as well as sales order processing, quality inspection, and invoicing, focusing on warehouse-managed stock.

# Sales

## Order and Contract Management (V)

Business Area	Scope Item	SID	Status	Short Description
Order and Contract Management	Return Order Processing for Non-Stock Material	<a href="#">3TE</a>	Upgraded	This scope item handles return order processing of non-stock items and corresponding compensation.
Order and Contract Management	Return Order Processing for Sales Kits	<a href="#">5CX</a>	Upgraded	This scope item supports the customer returns order processing of sales kits in accelerated returns management. Bills of materials (BOMs) are used to bundle sales kits.
Order and Contract Management	Returnables Processing	<a href="#">BDW</a>	Upgraded	This process enables the shipping of standard pallets and their return.
Order and Contract Management	SAP Fiori Analytical Apps for Sales	<a href="#">1BS</a>	Upgraded	This scope item covers SAP Fiori analytical apps for sales and distribution.
Order and Contract Management	Safety Data Sheets in the Value Chain	<a href="#">3VQ</a>	Changed	Placing chemical products on the market requires an efficient system support for handling mandatory documentation as defined by regulators. This scope item focuses on the maintenance of Safety Data Sheets for products during Sales processes.
Order and Contract Management	Sale of Services	<a href="#">2EQ</a>	Upgraded	This scope item covers sales order processing of service items without delivery and order-related billing.
Order and Contract Management	Sales Commissions - External Sales Representative	<a href="#">2TT</a>	Upgraded	This scope item covers the subsequent settlement of sales commission conditions agreed on with external sales agents.
Order and Contract Management	Sales Contract Management	<a href="#">I9I</a>	Upgraded	This scope item covers the creation and the call-off of a sales quantity contract and a value contract for a certain product. For the sales quantity contract down payments can be requested.
Order and Contract Management	Sales Inquiry	<a href="#">1IQ</a>	Upgraded	This scope item describes the process for a standard sales inquiry.
Order and Contract Management	Sales Order Entry with One-Time Customer	<a href="#">BDH</a>	Upgraded	This scope item describes the process of sales order creation without having a specific customer master record for the prospect or customer available during the order process.
Order and Contract Management	Sales Order Fulfillment Monitoring and Operations	<a href="#">BKK</a>	Upgraded	This scope item describes the usage of productivity apps for monitoring and operations. The Sales Order Fulfillment Monitor provides a central entry point for analyzing and resolving sales order fulfillment impediments. The Manage Duplicate Sales Order app helps to detect and reject duplicates to avoid redundant processing.



# Sales

## Order and Contract Management (VI)

Business Area	Scope Item	SID	Status	Short Description
Order and Contract Management	Sales Order Processing - SEPA Direct Debit Handling	<a href="#">BKX</a>	Upgraded	This business process encompasses the check of the SEPA mandate during sales order processing, including exception handling if the SEPA mandate does not exist.
Order and Contract Management	Sales Order Processing for Non-Stock Material	<a href="#">2ET</a>	Upgraded	This scope item handles sales order processing of non-stock items with delivery and delivery-related billing.
Order and Contract Management	Sales Order Processing for Sales Kits	<a href="#">31Q</a>	Changed	This scope item supports selling products bundled into sales kits. There are three ways to process a bill of material in sales: pricing and logistics execution at the header level; pricing and logistics execution at the item level; pricing on header level, logistics on item level.
Order and Contract Management	Sales Order Processing with Customer Down Payment	<a href="#">BKJ</a>	Upgraded	In business, especially in a make-to-order environment, customers may be required to pay an amount in advance before the goods are delivered.
Order and Contract Management	Sales Order Processing with Invoice List and Collective Billing	<a href="#">BKZ</a>	Upgraded	This scope item describes how to handle invoice lists and collective billing.
Order and Contract Management	Sales Processing using Third-Party with Shipping Notification	<a href="#">BD3</a>	Upgraded	This process enables your company to forward orders to third-party vendors who then ship goods directly to customers and bill you directly. Once vendors have sent a shipping notification, a statistical goods receipt can be posted.
Order and Contract Management	Sales Processing using Third-Party with Variant Configuration	<a href="#">4R6</a>	Upgraded	This scope item enables you to forward orders with variant configuration material to third-party vendors with or without shipping notification.
Order and Contract Management	Sales Processing using Third-Party without Shipping Notification	<a href="#">BDK</a>	Upgraded	This process enables you to pass sales orders to a third-party vendor who then ships the goods directly to the customer and bills you. The standard sales order automatically creates a purchase requisition for the materials to be delivered by the third-party vendor.
Order and Contract Management	Sales Quotation	<a href="#">BDG</a>	Upgraded	This scope item describes the creation of a standard sales quotation with conversion to a sales order.
Order and Contract Management	Sales Rebate Processing	<a href="#">1B6</a>	Upgraded	This scope item is used where subsequent rebates are settled based on business volumes or quantities with a customer. Using Condition Contract Management, various functions are available to create and settle rebate agreements with customers.

# Sales

## Order and Contract Management (VII)

Business Area	Scope Item	SID	Status	Short Description
Order and Contract Management	Sales Scheduling Agreement with Consignment	<a href="#">4LZ</a>	Changed	This scope item describes the sales scheduling agreement process with consignment for component manufacturers (Sell-from-Stock).
Order and Contract Management	Sales Scheduling Agreements	<a href="#">3NR</a>	Changed	This scope item describes the sales scheduling agreement process for component manufacturers (Sell-from-Stock).
Order and Contract Management	Sales of Non-Stock Item with Order-Specific Procurement	<a href="#">BDN</a>	Upgraded	This process enables customers to place orders for goods that are not in stock. If this is the case, goods are procured from external suppliers.
Order and Contract Management	Self-Billing	<a href="#">4H2</a>	Upgraded	This scope item describes the financial settlement for sell-from-stock processes based on self-billing messages received from customers.
Order and Contract Management	Sell from Stock	<a href="#">BD9</a>	Upgraded	This scope item describes the entire process sequence for a standard sales process (Sale-from-Stock) with a customer. The business process encompasses all the steps, from creating an order to the clearing of a customer account after the receipt of payment.
Order and Contract Management	Sell from Stock - Consumer Products	<a href="#">5HL</a>	<b>New</b>	This scope item covers a sales process for Consumer Products Industry products with seamless integration to the production process.
Order and Contract Management	Solution Order	<a href="#">4GT</a>	Changed	Solution Order Management allows you to offer complex solutions of physical goods, services, subscriptions and projects in one integrated process.
Order and Contract Management	Subscription Management with Sales Billing	<a href="#">57Z</a>	Changed	This scenario provides the foundation for subscription management in SAP S/4HANA Cloud. It integrates the relevant financial information that is required to bill and invoice subscriptions in SAP S/4HANA Cloud sales billing and process revenues and costs in accounts receivables (FI-AR).

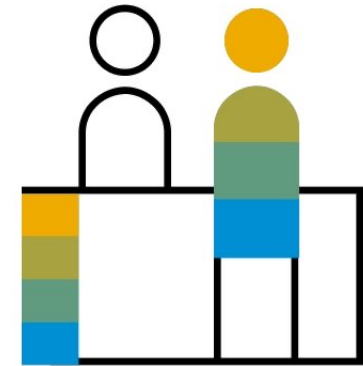
# SAP Best Practices for SAP S/4HANA Cloud

## Cloud Capabilities in Line of Business: Service

### Service

Service Master Data & Agreement Management

Service Operations & Processes



# Service

## Service Master Data & Agreement Management

Business Area	Scope Item	SID	Status	Short Description
Service Master Data & Agreement Management	Service Contract Management	<a href="#">3MO</a>	Changed	The scope item describes the creation of service contracts in SAP S/4HANA Cloud along with additional capabilities.
Service Master Data & Agreement Management	Service Monitoring and Analytics	<a href="#">43B</a>	Changed	This scope item covers all the analytical applications available in service, starting with the service management overview, which helps the customer service manager to analyze various data related to service orders and contracts. This scope item helps to display and monitor issues that impede the fulfillment of service transactions. As a sales manager, you can use the Order to Cash dashboard to analyze incoming and open service orders.
Service Master Data & Agreement Management	Warranty Claim Management - Supplier Recovery Processing	<a href="#">5HR</a>	New	This scenario enables you to create a warranty claim that can then be forwarded to the respective supplier for a reimbursement.

# Service

## Service Operations & Processes

Business Area	Scope Item	SID	Status	Short Description
Service Operations & Processes	Credit Memo Processing for Service Management	<a href="#">4GG</a>	Upgraded	This scope item enables credit memo processing for service processes.
Service Operations & Processes	In-House Repair	<a href="#">3XK</a>	Changed	This scope item covers the lean in-house repair process to repair simple, serialized devices, based on resource-related or fixed-price scenarios. You can select such repair objects, perform prechecks, and decide to either return the items to the customer or generate a quotation or repair order and plan the next steps (for example, share quotation, plan and execute repair, and so on). You can subsequently bill the customer.
Service Operations & Processes	Intercompany Billing for Service Documents	<a href="#">53Y</a>	Upgraded	This scope item encompasses the creation of intercompany invoices and simultaneous posting of intercompany invoice to the accounts payable of the ordering company.
Service Operations & Processes	Procurement for Service Management	<a href="#">3NI</a>	Upgraded	This scope item covers the integration of service management with procurement. Purchase Requisitions are created with reference to the Service Order line item and subsequent processes are executed. Procurement costs are updated in the service order.
Service Operations & Processes	Recurring Services	<a href="#">4X5</a>	Upgraded	This scope item encompasses the recurring services planning, scheduling, and execution with reference to the customer service contract and covers single cycle plans (both time-based and counter-based) and multiple counter plans.
Service Operations & Processes	Service Order Management and Monitoring	<a href="#">3D2</a>	Changed	This scope item encompasses the field services planning and execution comprising both Fixed Price and Time and Material services. The process incorporates service order creation, release followed by subsequent confirmations, and billing to customer.
Service Operations & Processes	Service Order Processing with SAP Field Service Management	<a href="#">49X</a>	Changed	This scope item describes service order processing scenarios between SAP S/4HANA Cloud and SAP Field Service Management.
Service Operations & Processes	Service Quotation	<a href="#">4GA</a>	Upgraded	This scope item covers the service quotation process: legally binding offers with fixed conditions made to a customer for the performance of services. It helps customer service managers to provide cost estimates before placing an order. Time and Material (T&M) and Fixed Price based cost estimates are supported with automatic creation of service orders once accepted by the customer.

# SAP Best Practices for SAP S/4HANA Cloud

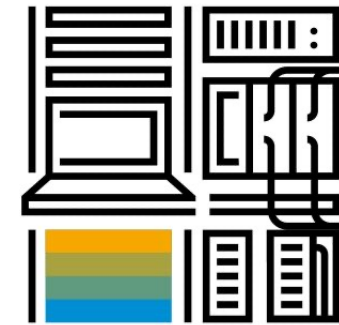
## Cloud Capabilities in Industry: Solutions for Specific Industries

### Solutions for Specific Industries

Professional Services

Oil and Gas

Automotive



# Solutions for Specific Industries

## Professional Services (I)

Business Area	Scope Item	SID	Status	Short Description
Professional Services	Advanced Resource Management - Project-Based Services	<a href="#">1KC</a>	Upgraded	For a resource manager, Resource Management for Project-Based Services allows you to monitor and manage the resource utilization and the staffing of resource requests, ensuring optimal resource utilization and efficient project staffing.
Professional Services	Basic Resource Management - Project-Based Services	<a href="#">2MV</a>	Upgraded	For a resource manager, this scope item allows you to monitor the resource utilization and the staffing of resource requests, ensuring optimal resource utilization and efficient project staffing.
Professional Services	Customer Project Analysis	<a href="#">BGI</a>	Upgraded	Customer Project Analysis is an analytical SAP Fiori application built using Analysis Path Framework in SAP S/4HANA embedded analytics. This application provides rich visualization and analysis of customer projects based on margin, revenue, cost, and so on. The application uses several predefined analysis steps such as country, service organization, profit centers, projects, and more.
Professional Services	Customer Project Management - Project-Based Services	<a href="#">J11</a>	Upgraded	This scope item manages the complete end-to-end process of selling and performing project-based services to customers.
Professional Services	Event-Based Revenue Recognition - Project-Based Services	<a href="#">1IL</a>	Changed	Event-based Revenue Recognition calculates and posts revenues and cost adjustments to projects. Revenue recognition is either cost-based or time-based depending on project type.
Professional Services	Event-Based Revenue Recognition - Project-Based Services - IFRS	<a href="#">1P0</a>	Changed	Event-based Revenue Recognition calculates and posts real-time revenue and cost adjustment for professional service for fixed price, time and material, and periodic service projects using parallel ledger functionality.
Professional Services	Event-Based Revenue Recognition - Project-Based Services - US GAAP	<a href="#">33O</a>	Changed	Event-based Revenue Recognition calculates and posts real-time revenue and cost adjustment for professional services for fixed price, time and material, and periodic service projects, using US GAAP Ledger functionality.
Professional Services	Intercompany Billing for Cross-Company Cost Accounting Postings	<a href="#">4AN</a>	Changed	With this scope item, companies can create intercompany invoices and accounts payable documents based on cross-company cost accounting postings with resource-related intercompany billing functionality.
Professional Services	Intercompany Processes - Project-Based Services	<a href="#">16T</a>	Upgraded	The Intercompany Processes - Project-Based Services scope item encompasses creation of intercompany invoices and simultaneous posting of intercompany invoice to the accounts payables of the ordering company.
Professional Services	Internal Project Management - Project-Based Services	<a href="#">1A8</a>	Upgraded	This scope item manages the complete end-to-end process of project-based services inside the company.

# Solutions for Specific Industries

## Professional Services (II)

Business Area	Scope Item	SID	Status	Short Description
Professional Services	Project Billing - Project-Based Services	<a href="#">4E9</a>	Changed	This scope item provides a new project billing solution for customer projects in Professional Services.
Professional Services	Project-Based Service Procurement in Headquarter-Subsidiary Model	<a href="#">3TQ</a>	Upgraded	This scope item manages the end-to-end process where the headquarters procures the project-based services from a subsidiary.
Professional Services	Sales Order Processing - Project-Based Services	<a href="#">J14</a>	Upgraded	This scope item describes the entire process sequence for the sales order maintenance and the billing process within the project-based services scenario.
Professional Services	Service and Material Procurement - Project-Based Services	<a href="#">J13</a>	Upgraded	This scope item covers all relevant procurement processes of the professional services scenario, such as service procurement, consumption materials procurement, and procurement for third-party order processing.
Professional Services	Utilization Analysis	<a href="#">BGJ</a>	Upgraded	Utilization Analysis is a guide on using custom CDS view and CDS query. It takes utilization rate of employees across several predefined analysis steps such as company, service organization, cost centers, employee details, and so on as an example. This ultimately leads to the analysis of billable versus non-billable employees in commercial project management.



# Solutions for Specific Industries

## Oil and Gas

Business Area	Scope Item	SID	Status	Short Description
Oil and Gas	Field Logistics Planning and Execution	<a href="#">40G</a>	Changed	This scope item supports the supply of products needed for maintenance operations from a supplying base to a remote location, and the return process of products from the remote location back to the base.
Oil and Gas	Field Logistics Planning and Execution – Direct Procurement	<a href="#">5OM</a>	<b>New</b>	This scope item supports the supply of non-stock items (with and without material master) needed for maintenance operations from a supplying base to a remote location, and the return process of products from the remote location back to the base.
Oil and Gas	Field Logistics Planning and Execution – Supplier Items	<a href="#">4AH</a>	Changed	This scope item supports provisioning supplier items and rentals needed for maintenance operations from a supplying base to a remote location.
Oil and Gas	Mass Processing of Assets	<a href="#">4ON</a>	Upgraded	This scope item enables you to create and change assets en masse.
Oil and Gas	Production Volume Capture	<a href="#">4AG</a>	Upgraded	This scope item supports the capturing and monitoring of production volumes of wells, and well completions in oil and gas upstream.
Oil and Gas	Revenue Accounting - Oil and Gas Production	<a href="#">5NM</a>	<b>New</b>	This solution automates vital revenue accounting processes for upstream oil and gas companies.

# Solutions for Specific Industries

## Automotive

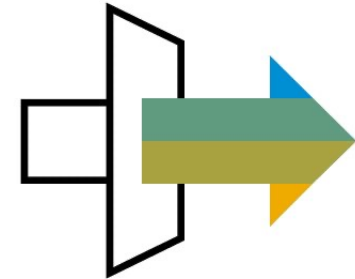
Business Area	Scope Item	SID	Status	Short Description
Automotive	Digital Vehicle	<a href="#">5ON</a>	New	This scope item describes the Digital Vehicle end-to-end process for the Vehicle Administrator. The business process encompasses steps from vehicle creation, purchase order creation, quotation creation, sales order creation, and sales order creation with reference to quotation.

# SAP Best Practices for SAP S/4HANA Cloud

## Cloud Capabilities in Line of Business: Database and Data Management

**Database and Data Management**

Enterprise Information Management



# Database and Data Management

## Enterprise Information Management (I)

Business Area	Scope Item	SID	Status	Short Description
Enterprise Information Management	ABAP Core Data Services Extraction for SAP Data Intelligence	<a href="#">53M</a>	Changed	Accelerate your ABAP core data services extraction from SAP S/4HANA Cloud to SAP Data Intelligence.
Enterprise Information Management	ABAP Core Data Services Extraction for SAP Data Warehouse Cloud	<a href="#">53L</a>	Changed	Accelerate your ABAP core data services extraction from SAP S/4HANA Cloud to SAP Data Warehouse Cloud.
Enterprise Information Management	Automated Provisioning via SAP Cloud Identity Access Governance	<a href="#">3AB</a>	Upgraded	This scope item automates provisioning based on SAP SuccessFactors events via integration with SAP Cloud Identity Access Governance.
Enterprise Information Management	Automotive Supply to Customer - Inventory Management	<a href="#">55F</a>	Changed	This scope item describes an end-to-end process for automotive suppliers with focus on scheduling agreements for sales, Just-In-Time processing, scheduling agreements for purchasing, repetitive manufacturing, delivery, and self-billing (optional).
Enterprise Information Management	Collaborative Manufacturing with SAP Digital Manufacturing Cloud	<a href="#">1NX</a>	Upgraded	The integration between SAP S/4HANA and SAP Digital Manufacturing Cloud for collaboration on parts for additive manufacturing solution provides the options to collaborate with suppliers, design, and produce parts through additive manufacturing.
Enterprise Information Management	Core Data Services-Based Extraction with SAP S/4HANA Cloud	<a href="#">35D</a>	Upgraded	This scope item lets you extract CDS-based data with SAP S/4HANA Cloud, via access to the CDS-ODP source.
Enterprise Information Management	Core HR with SAP SuccessFactors Employee Central	<a href="#">JB1</a>	Upgraded	The SAP SuccessFactors Employee Central Integration to the SAP S/4HANA Cloud offers you predefined content for data integration to enable end-to-end business processes across your core Cloud HR - SAP SuccessFactors Employee Central - and SAP S/4HANA Cloud.
Enterprise Information Management	Customer Data Return	<a href="#">5I9</a>	Changed	Before the subscription term expires, the customer can use the Customer Data Return application to perform an export of customer data (in XML or CSV format) from the SAP S/4HANA Cloud service.
Enterprise Information Management	Data Aging	<a href="#">1K8</a>	Upgraded	Data Aging helps manage SAP HANA in-memory storage by moving excess data to disk.
Enterprise Information Management	Data Migration to SAP S/4HANA from SAP	<a href="#">BH3</a>	Upgraded	Data migration to SAP S/4HANA Cloud for existing SAP Business Suite customers is currently performed with the Migrate data using staging tables approach (2Q2).
Enterprise Information Management	Data Migration to SAP S/4HANA from Staging	<a href="#">2Q2</a>	Upgraded	Customers can migrate data into SAP S/4HANA Cloud from legacy systems, using staging tables as a source for the SAP S/4HANA migration cockpit.

# Database and Data Management

## Enterprise Information Management (II)

Business Area	Scope Item	SID	Status	Short Description
Enterprise Information Management	Data Protection and Privacy	<a href="#">5LE</a>	Changed	This scope item provides features and functions to support compliance with the relevant legal requirements and general data protection acts (such as EU GDPR, CCPA) for the processing of personal data (including person-related data).
Enterprise Information Management	Data Quality Management for Business Partner	<a href="#">4AP</a>	Upgraded	This scope item describes a process for creating master data quality rules that can be used for data quality evaluations for business partners.
Enterprise Information Management	Data Quality Management for Product	<a href="#">4AQ</a>	Upgraded	This scope item describes a process for creating master data quality rules that can be used for data quality evaluations for products.
Enterprise Information Management	Electronic Movement Control System	<a href="#">4O0</a>	Upgraded	This scope item enables you to interchange Electronic Movement and Control System messages with the tax authorities via SAP Excise Tax Management.
Enterprise Information Management	Employee Integration - SAP S/4HANA Enablement	<a href="#">1FD</a>	Upgraded	This scope item covers the technical enablement of SAP S/4HANA to enable employee master data integration, and to store employee and employee-related data in SAP S/4HANA.
Enterprise Information Management	Enablement of SAP Excise Tax Management	<a href="#">4LO</a>	Upgraded	This scope item enables you to integrate with SAP Excise Tax Management.
Enterprise Information Management	Financial Master Data for SAP SuccessFactors Employee Central	<a href="#">4AJ</a>	Upgraded	This scope item integrates financial master data from SAP S/4HANA Cloud with SAP SuccessFactors Employee Central.
Enterprise Information Management	Import Connection setup with SAP Analytics Cloud	<a href="#">1YB</a>	Upgraded	Configure the connection between SAP Analytics Cloud for Planning and SAP S/4HANA in the Public Cloud.
Enterprise Information Management	Inbound Service for Predictive Analytics Integrator	<a href="#">2V2</a>	Upgraded	This scope item helps setting up inbound services for Predictive Analytics Integrator.
Enterprise Information Management	Information Lifecycle Management	<a href="#">1KA</a>	Upgraded	Information Lifecycle Management (ILM) allows for the blocking and deletion of data according to residence and retention rules.
Enterprise Information Management	Integration to SAP Enterprise Contract Assembly	<a href="#">2OQ</a>	Upgraded	This scope item describes integration of both applications (SAP S/4HANA for enterprise contract management and SAP Enterprise Contract Assembly) that can be used to automate creation and assembly of legal content.

# Database and Data Management

## Enterprise Information Management (III)

Business Area	Scope Item	SID	Status	Short Description
Enterprise Information Management	Mass Load and Mass Maintenance for Business Partner	<a href="#">1RK</a>	Upgraded	Mass Load and Mass Maintenance of business partner data provides capabilities to load and update multiple business partner master data records at a time.
Enterprise Information Management	Mass Load and Mass Maintenance for Product	<a href="#">1RM</a>	Upgraded	Mass Load and Mass Maintenance of Product Data provides capabilities to load and update multiple product master data records at the same time.
Enterprise Information Management	Mass Processing for Business Partner	<a href="#">1N7</a>	Upgraded	Mass Processing for Business Partner supports the update of multiple master data records. To update, you select the records to change. The system then provides statistics on the changed fields and validates the data.
Enterprise Information Management	Mass Processing for Product	<a href="#">1N5</a>	Upgraded	Mass Processing for Product supports the update of multiple master data records. To update records, select the fields and records to change. Once you enter your changes, the system provides statistics on the changed fields and validates the data.
Enterprise Information Management	Master Data Catalog for SAP S/4HANA Cloud	<a href="#">1I5</a>	Upgraded	This scope item provides a central entry point to documentation on master data (for example, Customer, G/L Account, and so on). It gives an overview of how users maintain master data objects and what data is provided by SAP.
Enterprise Information Management	Master Data Consolidation for Business Partner	<a href="#">1N3</a>	Upgraded	Master Data Consolidation for Business Partner provides capabilities to load master data and to detect duplicates. For each of the resulting match groups, a best record is calculated using survivorship rules on the master data attributes.
Enterprise Information Management	Master Data Consolidation for Product	<a href="#">1N1</a>	Upgraded	With Master Data Consolidation for Product, you can load master data and detect duplicates. For each of the resulting match groups, a best record is calculated using survivorship rules on the master data attributes.
Enterprise Information Management	Master Data Integration	<a href="#">1RO</a>	Upgraded	Integration of SAP S/4HANA Cloud to SAP Master Data Governance enables you to set up a master data replication for Business Partner and Product master data from an on premise SAP System to SAP S/4HANA Cloud utilizing whitelisted APIs.
Enterprise Information Management	Master Data Remediation for Product	<a href="#">1MZ</a>	Upgraded	Master Data Remediation for Product provides capabilities to validate product master data and to get the result of the validation into a worklist. In this worklist, the correction of the erroneous product master data can be triggered.

# Database and Data Management

## Enterprise Information Management (IV)

Business Area	Scope Item	SID	Status	Short Description
Enterprise Information Management	Payroll Processing with SAP ERP HCM Payroll	<a href="#">3UP</a>	Upgraded	Integrate your SAP ERP HCM Payroll with SAP S/4HANA Cloud. The payroll information is sent to Financials in SAP S/4HANA Cloud.
Enterprise Information Management	Payroll Processing with SAP SuccessFactors Employee Central Payroll	<a href="#">1NL</a>	Upgraded	Integrate your SAP SuccessFactors Employee Central Payroll with SAP S/4HANA Cloud. The payroll information is sent to Financials in SAP S/4HANA Cloud.
Enterprise Information Management	Produce and Sell Standard Products - Inventory Management	<a href="#">54U</a>	Changed	This scope item enables production planning and execution of serialized finished goods in make-to-stock scenarios, procurement of required components, as well as sales order processing, quality inspection and invoicing.
Enterprise Information Management	Produce and Sell Standard Products - Warehouse Managed	<a href="#">54V</a>	Changed	This scope item enables production planning and execution of finished goods in a make-to-stock scenario, procurement of required components, as well as sales order processing, quality inspection, and invoicing, focusing on warehouse-managed stock.
Enterprise Information Management	Responsibility Management	<a href="#">1NJ</a>	Upgraded	This scope item lets you flexibly define and manage responsibilities, including authorizations for various contexts, and retrieve the correct contacts that can react to tasks and activities.
Enterprise Information Management	SAP Enable Now Integration	<a href="#">3N5</a>	Upgraded	With the integration of SAP Enable Now, you enable the extensibility scenario for the Web Assistant. This allows you to change the SAP standard content, to create your own, and to add existing content to the help framework.
Enterprise Information Management	SAP Mobile Cards	<a href="#">2TU</a>	Upgraded	SAP Mobile Cards allows users to mobilize and publish important business information instantly to their mobile devices.
Enterprise Information Management	SAP S/4HANA Cloud Integration with SAP Marketing Cloud	<a href="#">1UG</a>	Upgraded	This scope item provides out-of-the-box integration between SAP S/4HANA Cloud and SAP Marketing Cloud.
Enterprise Information Management	SAP S/4HANA for Enterprise Contract Management	<a href="#">1XV</a>	Upgraded	SAP S/4HANA Cloud for enterprise contract management is an application that enables digitization and management of all legal content (for example, contracts) within an organization. This application facilitates creation and management of legal content in enterprises in alignment with core business processes. It provides an integrated platform to run enterprise-wide legal processes more efficiently.

# Database and Data Management

## Enterprise Information Management (V)

Business Area	Scope Item	SID	Status	Short Description
Enterprise Information Management	Subsidiary Integration of SAP S/4HANA Cloud to Central Finance	<a href="#">1W4</a>	Changed	Integrate your subsidiary running on SAP S/4HANA Cloud to your corporate Central Finance in SAP S/4HANA to centralize financial processes.
Enterprise Information Management	UI theme designer	<a href="#">2TV</a>	Upgraded	Apply your corporate branding to SAP S/4HANA Cloud by using the UI theme designer on SAP Business Technology Platform.
Enterprise Information Management	Workforce Management with SAP Master Data Integration	<a href="#">4AF</a>	Upgraded	This scope item integrates workforce data from a core human capital management system (such as SAP SuccessFactors Employee Central) with SAP S/4HANA Cloud using the SAP Master Data Integration.



# SAP Best Practices for SAP S/4HANA Cloud

## Cloud Capabilities in Line of Business: Application Platform and Infrastructure

### Application Platform and Infrastructure

Process Management and Integration



# Application Platform and Infrastructure

## Process Management and Integration

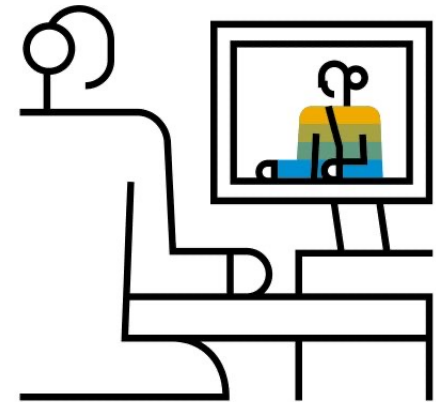
Business Area	Scope Item	SID	Status	Short Description
Process Management and Integration	Analytics - Purchase Order Visibility and Procurement Spend	<a href="#">2QU</a>	Upgraded	This scope item provides procurement-related CDS views to leverage extensibility and reporting functionality.
Process Management and Integration	Analytics for Production Unit - Plan/Actual Production Cost	<a href="#">2QW</a>	Upgraded	This scope item provides the foundation to produce prebuilt finance analytics content using Core Data Services (CDS). Views help the customer understand business trends. A set of Key Performance Indicators allow for robust analytics.
Process Management and Integration	Business Event Handling	<a href="#">1NN</a>	Upgraded	Business Event Handling enables SAP S/4HANA Cloud applications to push business events and receive events from the SAP Business Technology Platform. Events are sent in an asynchronous and reliable manner to ensure high availability, scalability, and responsive from different sources and platforms.
Process Management and Integration	Predictive Analytics Model Training - Finance	<a href="#">30K</a>	Upgraded	This scope item enables you to periodically train the preconfigured predictive scenarios with their own historical data to enable the model to reflect their business context and transaction/master data history.
Process Management and Integration	Responsibility Management	<a href="#">1NJ</a>	Upgraded	This scope item lets you flexibly define and manage responsibilities, including authorizations for various contexts, and retrieve the correct contacts that can react to tasks and activities.
Process Management and Integration	Situation Handling	<a href="#">31N</a>	Upgraded	Situation handling recognizes business situations by evaluating conditions (rules) on business facts. A business situation occurs when a business object changes a status relevant to a user, when critical deadlines are passed, or a KPI passes a threshold.

# SAP Best Practices for SAP S/4HANA Cloud

## Cloud Capabilities in Line of Business: IT Management

**IT Management**

Administration and Usability



# IT Management

## Administration and Usability

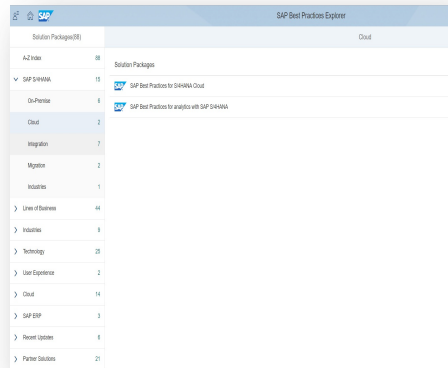
Business Area	Scope Item	SID	Status	Short Description
Administration and Usability	In-App Extensibility	<a href="#">1N9</a>	Upgraded	This scope item offers the means to adapt the UI layout and context, create custom fields and tables, create and extend analytical reports and forms, and change and add to the business logic.
Administration and Usability	Output Management	<a href="#">1LQ</a>	Changed	This scope item provides best practice information for SAP S/4HANA output management that can be used to implement business scenarios that include output-related tasks.
Administration and Usability	Side-by-Side Extensibility for SAP S/4HANA Cloud	<a href="#">1RW</a>	Upgraded	This scope item provides a general overview of extension options and a detailed step-by-step guide based on sample scenarios for developing extension applications on SAP BTP.

# Agenda

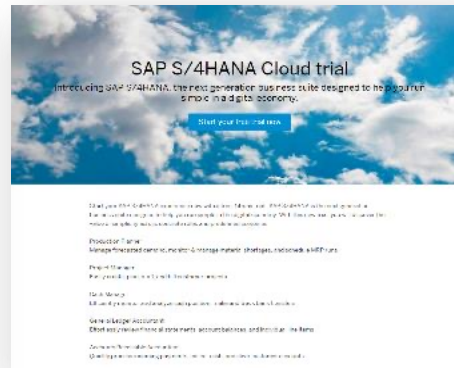
- Overview
- Scope
- More information

# Where to go for more information

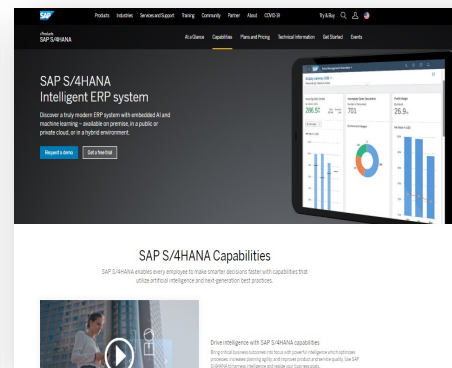
## SAP Best Practices Explorer



## SAP S/4HANA Trials



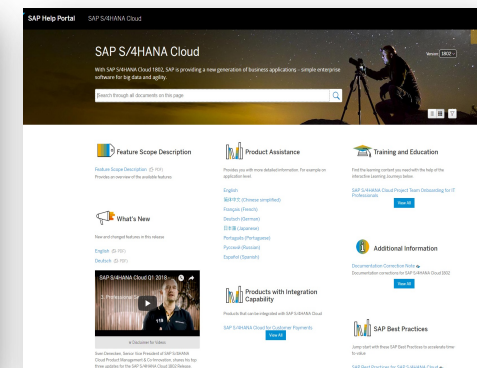
## SAP S/4HANA Capabilities, Highlights



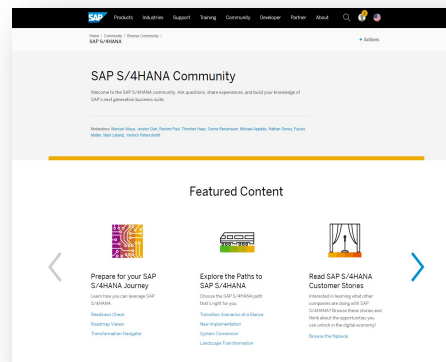
## SAP S/4HANA Roadmaps



## SAP Help Portal



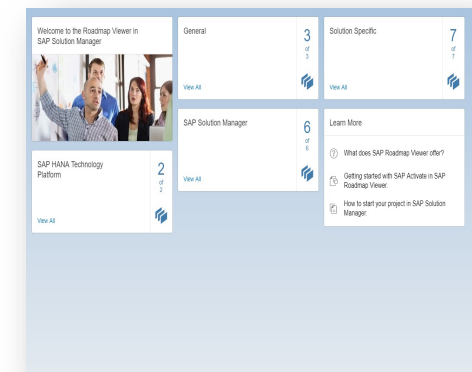
## Join the SAP S/4HANA Community



## Transformation Navigator



## SAP Roadmap Viewer



# Thank you.