

Webinar Special

SAP S/4HANA CLOUD Public Edition and **Manufacturing support**

- Introduction
- Footprint Manufacturing & SAP S/4HANA Cloud Public Edition
- Production Order Execution on Shop Floor
- In-Process Quality Inspection
- SAP Qualified Partner Package Manufacturing
- Q&A





Processes are in our DNA

Scheer. The Process Experts.

Presenters



Martijn Mook

Business Consultant

Martijn.mook@scheer-group.com



Stefan Bauer

Marketing Manager

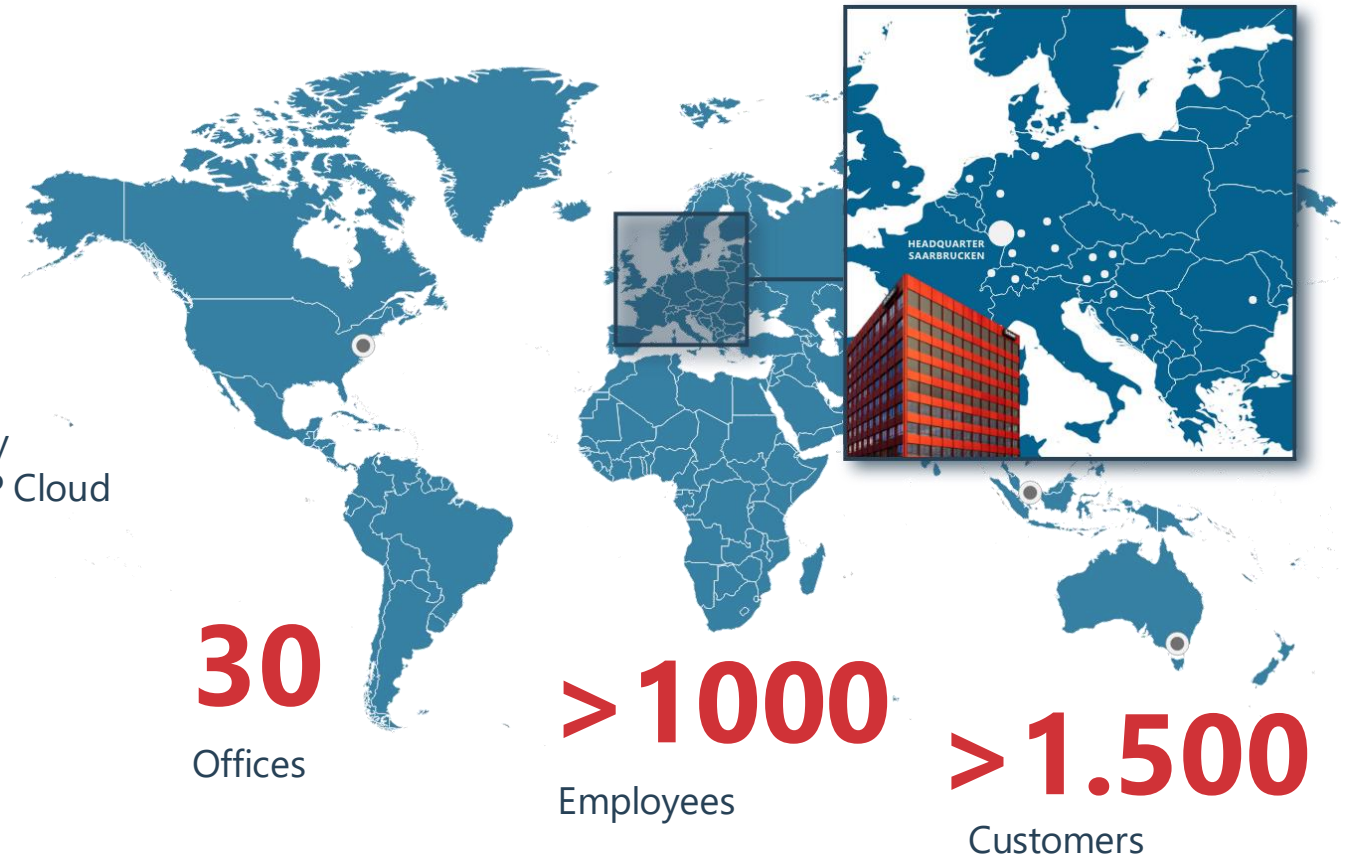
Stefan.bauer@scheer-group.com

Manufacturing Special

| | | | |
|-------------------------------|-------------------------------------|----------------------------------|--|
| Introduction | Manufacturing Footprint | Manufacturing Solution Explained | Production Order Execution on Shop Floor |
| In-Process Quality Inspection | Manufacturing SAP Qualified Package | Q&A | |

Scheer Nederland

Industries: Manufacturing and Automotive, Life Sciences, Professional Services Consumer Products



Scheer Worldwide

Focus: Europa, Middle East, Americas, Asia

Select SAP & Scheer Netherlands

Means partnering with an Experienced SAP Expert Partner

Extensive SAP Cloud Experience

+12 years Public Cloud

Industry-Specific Expertise

Deep Manufacturing Experience
from 10+ Go Lives

The Process Experts

- SAP Best Practices
- Local business setup
- International business setup

SAP Expert Partner

- SAP S/4HANA Cloud Public Edition
- SAP Business Technology Platform

Qualified Consultants

- Certified and experienced consultants
- Continuous Training Program

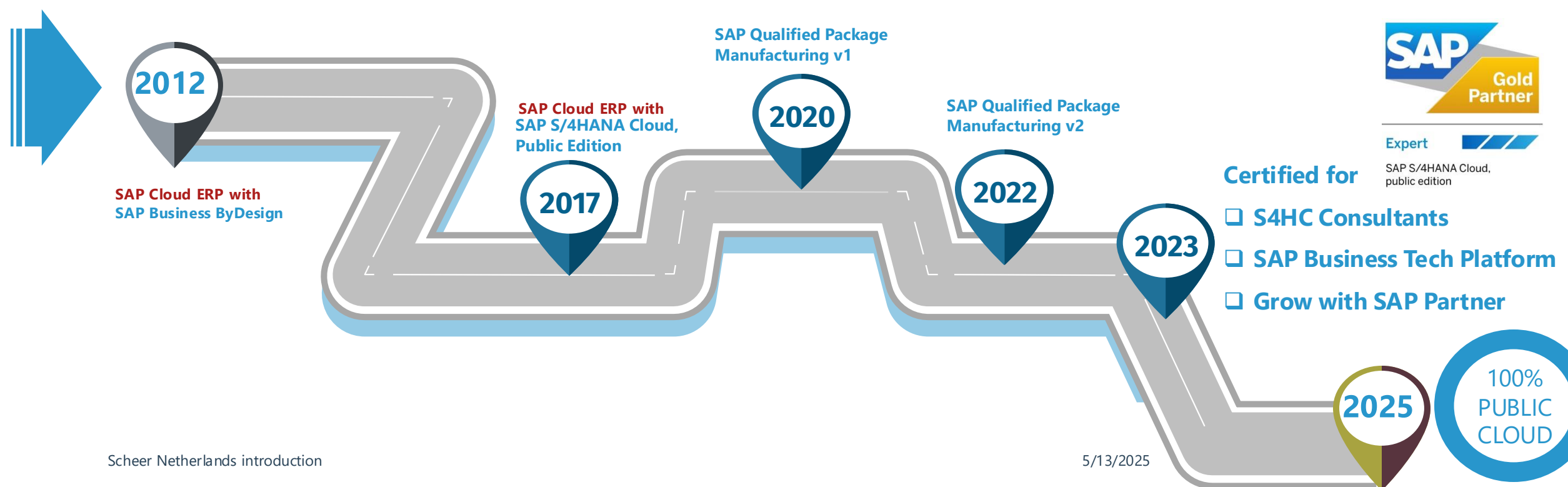
Integration Expertise

- SAP ECC / 2-Tier ERP
- SAP ECO Solutions
- Non-SAP Solutions

Manufacturing Special

| | | | |
|-------------------------------|-------------------------------------|----------------------------------|--|
| Introduction | Manufacturing Footprint | Manufacturing Solution Explained | Production Order Execution on Shop Floor |
| In-Process Quality Inspection | Manufacturing SAP Qualified Package | Q&A | |

Our SaaS-ERP Footprint
with SAP Public Cloud ERP: **SAP S/4HANA Cloud Public Edition**



SAP Public Cloud ERP

Our Industry Focus Areas



Our SaaS-ERP Footprint

with SAP Public Cloud ERP & Manufacturing

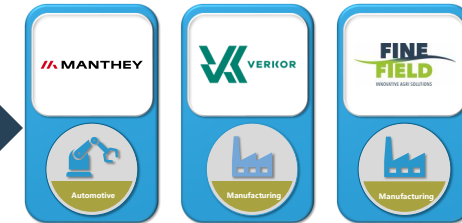
TWO TIER ERP – SAP ECC



MIGRATION
SAP ECC



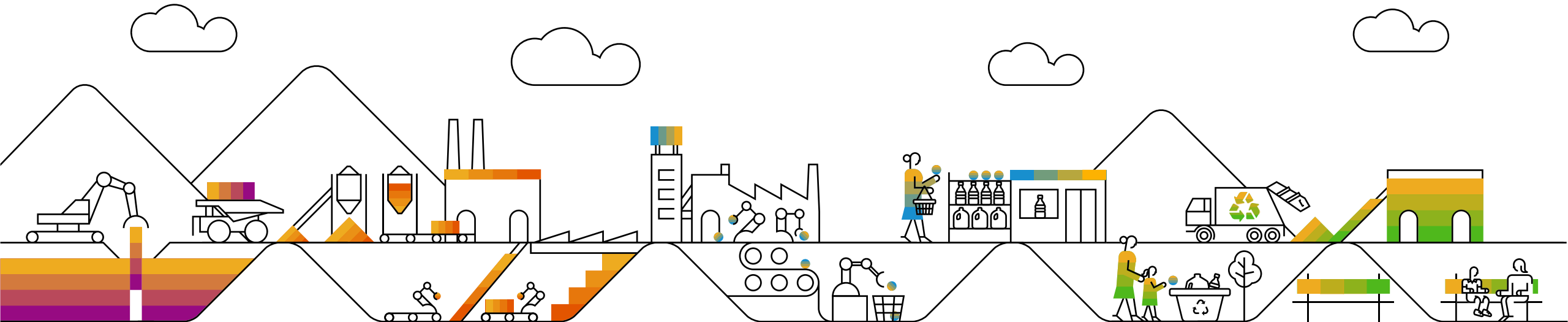
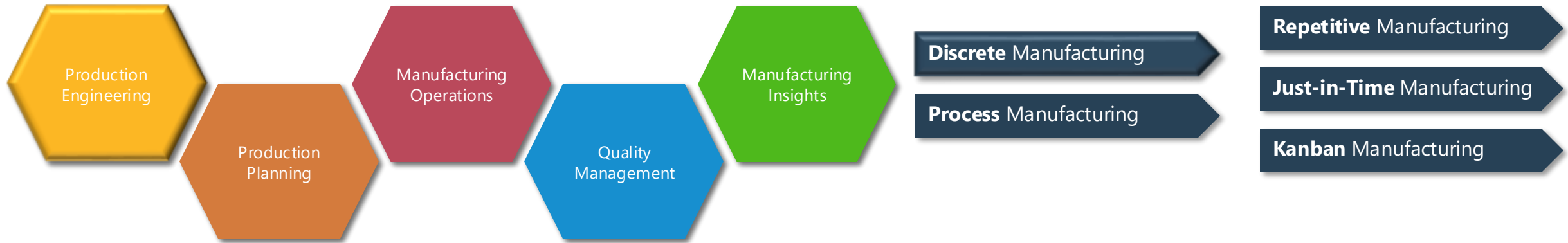
NEW
BUSINESS



Roll out

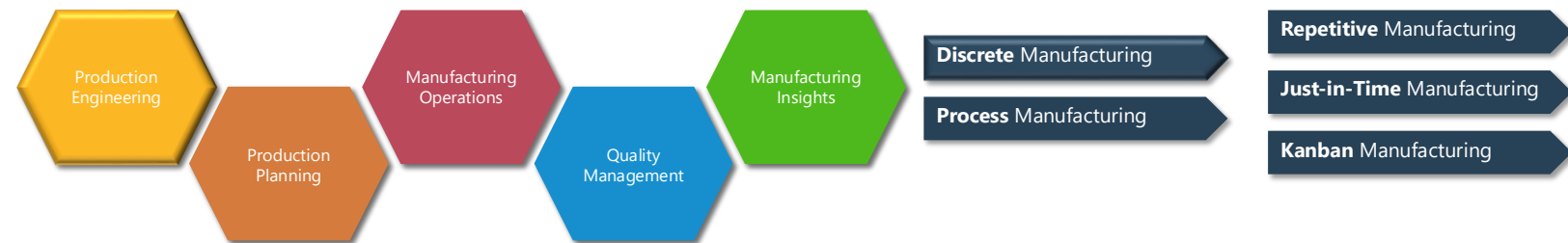


SAP S/4HANA Cloud – Manufacturing



SAP S/4HANA Cloud – Manufacturing

Overview Production Best Practices



| Scope ID | DISCRETE MANUFACTURING OPTIONS |
|----------|---|
| BJE | Make-to-Order Production - Finished Goods Sales and Final Assembly |
| 1BM | Make-to-Order Production - Semifinished Goods Planning and Assembly |
| 4OC | Make-to-Order Production for Sales Kits with Variant Configuration |
| 1YT | Make-to-Order Production with Variant Configuration |
| BJ5 | Make-to-Stock Production - Discrete Manufacturing |
| BJH | Make-to-Stock Production - Repetitive Manufacturing |
| 21D | Make-to-Stock Production with Variant Configuration |

| Scope ID | PROCESS MANUFACTURING OPTIONS |
|----------|---|
| 3OK | Make-to-Order Production - Process Manufacturing |
| BJ8 | Make-to-Stock - Process Manufacturing Based on Process Order |
| 2UG | Make-to-Stock - Process Manufacturing Based on Production Order |
| 3L7 | Make-to-Stock with Co- and By-Products - Process Manufacturing |
| 3UL | Make-to-Stock with Silo Material - Process Manufacturing |
| BJK | Production Subcontracting - External Processing |

Manufacturing Special

| | | | |
|-------------------------------|-------------------------------------|----------------------------------|--|
| Introduction | Manufacturing Footprint | Manufacturing Solution Explained | Production Order Execution on Shop Floor |
| In-Process Quality Inspection | Manufacturing SAP Qualified Package | Q&A | |

Production Order Execution

Production Order Execution on Shop Floor

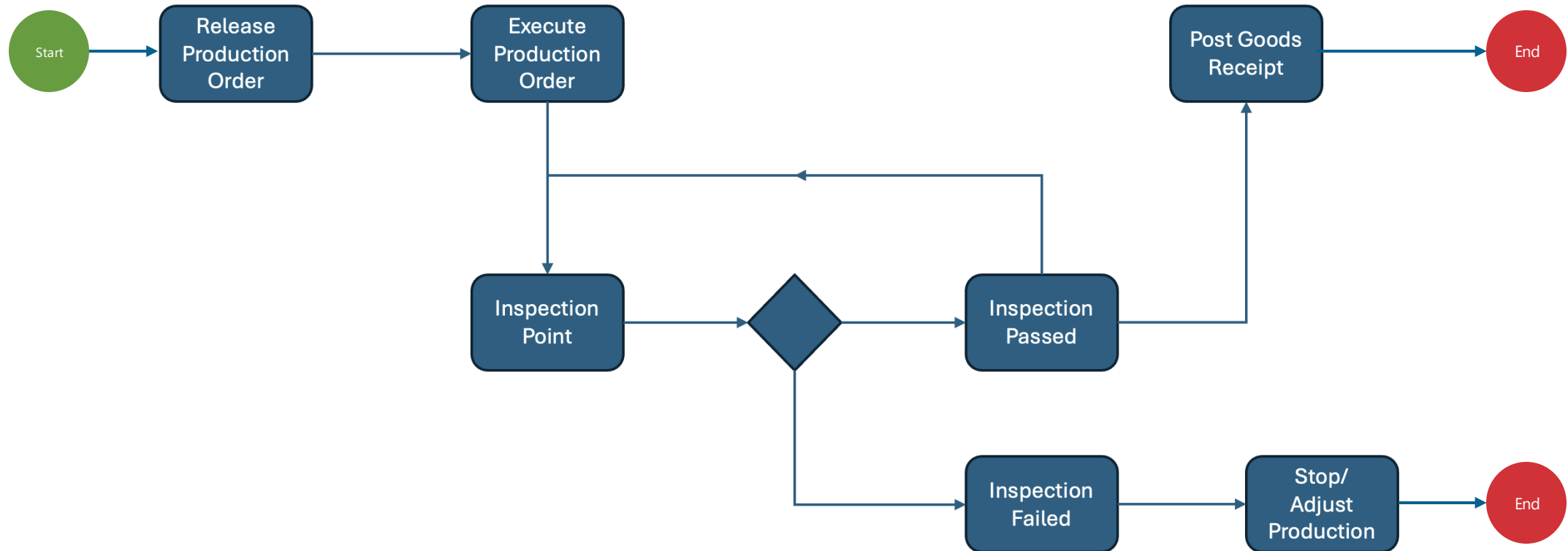


Manufacturing Special

| | | | |
|-------------------------------|-------------------------------------|----------------------------------|--|
| Introduction | Manufacturing Footprint | Manufacturing Solution Explained | Production Order Execution on Shop Floor |
| In-Process Quality Inspection | Manufacturing SAP Qualified Package | Q&A | |

In-process Inspection

In-process Quality Inspection with Inspection Points



Manufacturing Special

| | | | |
|-------------------------------|-------------------------------------|----------------------------------|--|
| Introduction | Manufacturing Footprint | Manufacturing Solution Explained | Production Order Execution on Shop Floor |
| In-Process Quality Inspection | Manufacturing SAP Qualified Package | Q&A | |

YScheer

THE PROCESS EXPERTS



Expert



SAP S/4HANA Cloud,
public edition

SAP® Qualified
Partner-Packaged Solution

SAP awarded Scheer as
SAP Expert Partner
for **SAP S/4HANA Cloud**
because of **the high number**
of certified consultants
and **many successful go-lives**



SAP S/4HANA Cloud – Manufacturing

SAP Qualified Package



Go lives



Go lives



Go lives



SAP S/4HANA Cloud Public Edition

What's inside the package

Adopt

SAP Partner Qualified Package

This solution is deployed based on a predefined scope, leveraging the use of pre configuration, accelerators, methodologies and tailored services to help customers run simple and realize a rapid time to value with reduced risks and a predictable outcome.

Solution

Approach

SAP® Qualified For Manufacturing

Partner-Packaged Solution

Org
Structure

Process
Scope

Functions
Scope

Master
Data &
Reports
Scope

Technical
Scope

Out of
Scope

Team

Change
Mngt

Plan

SAP
Activate

Docs

Support

Manufacturing Package Content



You get

Software as a Service

- SAP S/4HANA Cloud – Public Edition
- SAP Business Technology Platform

Including

- Starter System
- 3-Tier system: Dev, Quality, Production
- 1 of 58+ Localizations + language
- 2 major updates (YY.02 – YY.08)

Together we do

Config Primary process of

- Order-to-Cash
- Plan-to-Produce
- Source-to-Pay
- Record-to-Report

Plus support for

- Master Data & Migration
- Realization 5 KPIs plus Reports
- Testing, Periodic update
- First-period Closing

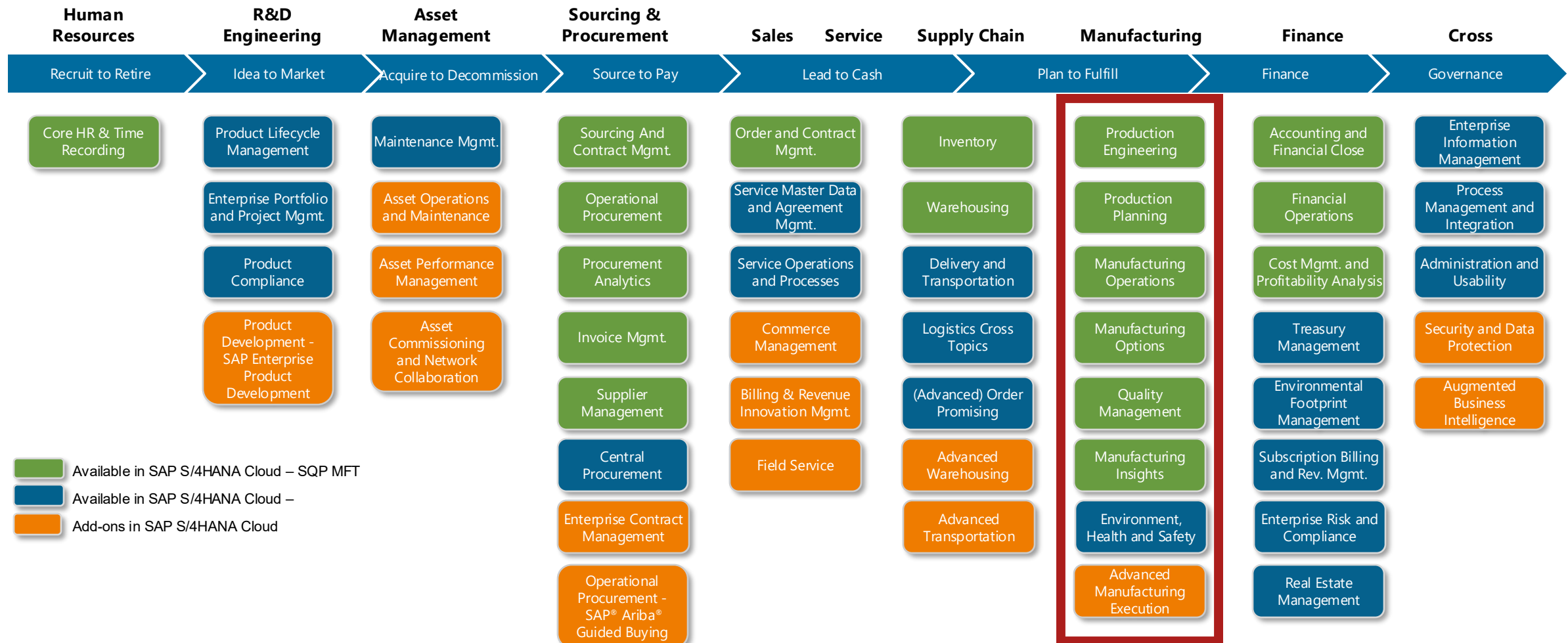
Using SAP Activate and our Accelerators

Following SAP Activate

- Scheer Process Driven SAP Implementation Approach driven by SAP Activate
- Industry model for quick scope confirmation
- Workshops for rapid Best Practice Adoption
- Working instructions
- Data Migration & Methods and Tools Support
- Test Procedure for Quality and Acceptance

SAP Qualified Partner Packaged Solution for Manufacturing

High-Level Scope of Functionality



Digital Discovery Assessment

Manufacturing

Step 2. SAP Business Suite scope

Financial Management
☒ Cloud ERP

Spend Management
☐ Travel and Expense Management
☐ Sourcing and Procurement

Supply Chain Management
☒ Planning
☒ Manufacturing

Human Capital Management
☒ Human Resources Core
☒ Payroll and Reimbursement
☒ Time Management

Customer Experience
☒ Sales
☐ Service

Technology Platform
☒ Integration
☐ Data and Analytics

Suite Modules are synchronized from Partner Deal Manager into DDA, manual selection of additional Suite Modules in DDA are not synchronized back to your BOM in Partner Deal Manager

* Suite Module is active in Bill of Material in Harmony and/or Quote and can therefore not be removed

Digital Discovery Assessment

Manufacturing

SAP

SAP S/4HANA Cloud - Digital Discovery

49%

In Scope

Digital Discovery

Action

Webinar Manufacturing (Edit access)

START

Start your discovery here!

BUSINESS CONTENT

Pre-selection packages

Start with a preselection here!

LOCALIZATION & LEGAL ENTITIES

Localization

Select relevant countries

SCOPE SELECTION

Sourcing and Procurement

2890 in scope

48%

Manufacturing

56116 in scope

48%

Supply Chain

3788 in scope

34%

Sales

2883 in scope

13%

Service

8125 in scope

47%

Human Resources

46 in scope

22%

Finance

57275 in scope

39%

Database and Data Mngt.

1538 in scope

25%

App, Platf. and Infrastr.

312 in scope

0%

Sol. for Specific Industries

103 in scope

100%

IT Management

12 in scope

0%

SAP BTP Use Cases

041 in scope

0%

Bus. Transformation Mgmt.

0710 in scope

100%

Deprecated Best Practices

17 in scope

ADDITIONAL REQUIREMENTS

Additional Requirements

Business process related

QUESTIONS

Detailed Qualification

Scope relevant questions

RESULTS

Results

Check your results here!

Manufacturing

Develop real-time visibility and transparency over manufacturing operations, optimize manufacturing processes, materials and resources, and collaborate to global networks while lowering total manufacturing costs.

(16) Environment, Health, and Safety

(1636) Manufacturing Operations

(1325) Manufacturing Options

(714) Production Engineering

(1523) Production Planning

(512) Quality Management

Compliance Management for Environment, Health, and Safety

41D

This scope item helps you to manage compliance with emissions-related environmental regulations. The processes

Questions

Notes

Emissions Management

41D

This scope item helps you to manage compliance with emissions-related environmental regulations. The processes

Questions

Notes

Health and Safety Management

54A

This scope item helps you to provide a safe workplace for your employees via different processes. You can create and

Questions

Notes

Lean Incident Management Reporting

31P

You can use this scope item to record and process incidents, safety observations, and near misses. After

Questions

Notes

Lean Management of Change Process

41X

With this scope item, you can manage and streamline changes to products, procedures, processes, and equipment.

Questions

Notes

Waste Management

60H

This scope item supports waste generators in handling waste disposal processes of generated waste within an

Questions

Notes

(1636) MANUFACTURING OPERATIONS

Automotive Supply to Customer - Inventory Management

41P

In this scope item, you create a sales scheduling agreement. Forecast delivery schedules are maintained manually.

Questions

Notes

Batch Management

BLF

Batch Management incorporates the entire logistics process, from procurement to sales. It's closely linked

Questions

Notes

Creation of Inbound Delivery

42P

This process bot improves inbound delivery by reducing the effort for the evidencing of incoming shipments.

Questions

Notes

Enable Manufacturing Subsidiary to Handle Assembly for Headquarter

2WL

This scope item runs a Make-to-Order scenario (assembly processing) at a subsidiary. A sales order is automatically

Questions

Notes

Engineer Products and Systems - Project with Production

31K

This scope item provides an end-to-end solution process focusing on the Engineer-to-Order (ETO) scenario for

Questions

Notes

Inbound Storage Tank Management - Process Manufacturing

31K

This scope item enables the storage tank management process, which supports the procurement of a new batch into the

Questions

Notes

Intelligent Production Order Conversion

41R

The bot takes singlemultiple Excel files with a list of planned order numbers as input and gives the output of created

Questions

Notes

Lot Size of One with Advanced Variant Configuration

31E

This scope item focuses on a Make-to-Order scenario (Lot Size of One) that integrates with production planning and

Questions

Notes

Make-to-Order Production - Finished Goods Sales and Final Assembly

BLJ

The Make-to-Order process starts with a customer quotation and ends with the clearing of a customer account after a

Questions

Notes

Make-to-Order Production - Process Manufacturing

31K

The standard sales process (make-to-order) for batch-managed finished goods starts with a customer quotation or sales

Questions

Notes

Make-to-Order Production - Semifinished Goods Planning and Assembly

18M

This scope item supports production planning for semifinished components within a Make-to-Order (MTO)

Questions

Notes

Make-to-Order Production for Sales Kits with Variant Configuration

41C

Customers want to have a way to use variant configuration and show the component as sales kit (SKT) during

Questions

Notes

Make-to-Order Production with Variant Configuration

11T

This scope item shows a Make-to-Order Production scenario using the Advanced Variant Configuration for an efficient

Questions

Notes

Make-to-Stock - Process Manufacturing Based on Production Order

81B

This scope item enables production planning in make-to-stock scenarios and quick reactions to incoming sales orders.

Questions

Notes

Make-to-Stock - Process Manufacturing Based on Process Order

81B

This scope item enables production planning in make-to-stock scenarios and quick reactions to incoming sales orders.

Questions

Notes

Make-to-Stock Production - Discrete Manufacturing

81J

This scope item enables production planning in make-to-stock scenarios for a serial number managed finished good.

Questions

Notes

Make-to-Stock Production - Repetitive Manufacturing

81J

Repetitive Manufacturing is commonly used when a production process meets the following criteria:

Questions

Notes

Make-to-Stock Production with Variant Configuration

21D

This scope item shows the Make-to-Stock Production with Variant Configuration in which Advanced Variant Configuration

Questions

Notes

Make-to-Stock with Co- and By-Products - Process Manufacturing

31J

This scope item enables the process of manufacturing of co- and by-products along with the main product.

Questions

Notes

Make-to-Stock with Silo Material - Process Manufacturing

31J

This scope item focuses on process manufacturing with more complex parameters compared to the Make-to-

Questions

Notes

Mass Confirmation of Production Orders

49T

The bot automates the upload of list of production order operation confirmations. Production Operator can track the output

Questions

Notes

Outbound Delivery - Post Goods Issue for Non-Warehouse Management

41V

This process bot performs Post Goods Issue (PGI) for all Outbound deliveries where picking has been completed. The

Questions

Notes

Post Goods Movement

41P

This process bot automates the manual recording of goods or materials movement from the Exact template. The

Questions

Notes

Predictive Analytics Model Training - Supply Chain

20N

With this scope item, the customers can utilize the embedded predictive analytics functionality in the supply chain

Questions

Notes

Produce and Sell Standard Products - Inventory Management

54J

This scope item enables production planning and execution for a finished good in make-to-stock scenarios, as well

Questions

Notes

Produce and Sell Standard Products - Warehouse Managed

54V

This scope item enables production planning and execution for a finished good in make-to-stock scenarios, as well

Questions

Notes

Production Operations with Third-Party Warehouse Execution System

11S

This scope item covers the setup of the integration from SAP S/4HANA Cloud Public Edition to Manufacturing

Questions

Notes

Production Order Processing with Third-Party Warehouse Management

28U

The scope item covers production processes. The business part of the processes, including creation and

Questions

Notes

Production Subcontracting - External Processing

81K

This scope item demonstrates the option to execute an operation externally within a production order. This type of

Questions

Notes

Rework Processing - Stock-Managed Material

81J

This scope item focuses on rework activities and material postings after production execution for the original

Questions

Notes

Rework Processing - Work-in-Process

81J

This scope item focuses on a rework process within production. All required rework activities are related to the

Questions

Notes

Serial Number Management in Logistics

81L

This scope item enables you to serialize and thus differentiate between individual material items. The history of serialized

Questions

Notes

Subsidiary as Production Unit and Internal Supplier to Headquarters

21T

This scope item runs a Make-to-Order scenario at a subsidiary. A sales order is automatically uploaded to the subsidiary

Questions

Notes

Q & A

SAP S/4HANA Cloud, Public Edition

Schedule Webinar Specials 2025

Thursday June 19th : Customization in the Cloud – Is that possible?

Customization within the Public Edition of SAP S/4HANA Cloud is certainly an option.

Customization can be achieved at various levels and in various ways, including personalization, adjustments, and additions. The advantage of the Public Edition is that the core of the ERP functionality always remains clean.

This webinar will focus on the following topics:

- Developing a cloud mindset
- Personalization: customization for employees/roles
- Deploying customized/additional functionalities
- Possibilities with integrations
- Maintenance and management - Lifecycle Management





Expert



SAP S/4HANA Cloud,
public edition

YScheer
THE PROCESS EXPERTS

Thank you for your Attention!

scheer-nederland.nl / [.com](https://scheer-nederland.nl)

Verschillen SAP ECC & SAP S/4HANA Cloud Public Edition

Productie

| Functie | SAP ECC | SAP S/4HANA Cloud Public Edition |
|---|--|--|
| Productieplanning (PP) | Traditionele MRP met batch-gebaseerde verwerking | Geavanceerde MRP Live voor real-time planning |
| Shop Floor-integratie | Vereist maatwerk voor integratie met MES/LIMS | Standaard integratiemogelijkheden met MES/LIMS via SAP BTP |
| Resourceplanning | Bepaalde mogelijkheden voor capaciteitsplanning | Real-time capaciteitsplanning en optimalisatie |
| Gebruik van data & analytics | SQL-gebaseerde rapportages, beperkte realtime inzichten | Embedded analytics met Fiori dashboards en AI-ondersteunde inzichten |
| Gebruik van scanning | Barcode scanning mogelijk, maar vereist extra configuratie | Standaard integratie voor scanning en IoT-sensoren |
| ERP-architectuur | On-premise met maatwerkconfiguraties | Cloud-native met best-practice configuraties |
| Upgrade & Innovatie | Handmatige upgrades met impact op maatwerk | Continue innovatie en automatische updates |
| TCO & IT-beheer | Hoge IT-kosten door infrastructuur en beheer | Lagere kosten door cloud-abonnement en minder beheer |