

Webinar Specials



SAP S/4HANA CLOUD, Public Edition

Myths & Perceptions about SAP S/4HANA Cloud, Public Edition

- ☐ Missing functionality
- ☐ Missing localizations
- ☐ No integrations
- ☐ Lack of enterprise readiness
- ☐ Limited extensibility of S/4HC
- ☐ Inconsistent User interface
- ☐ No references



Most experienced partner

SAP S/4HANA CLOUD, PUBLIC EDITION

Scheer. The Process Experts.

Webinar Specials



SAP S/4HANA CLOUD, Public Edition

SAP S/4HANA Cloud, Public Edition:

16 Feb: Possibilities of the Public Edition

20 Apr: Deployment of Two-Tier ERP

Jun 15: The myths surrounding the Public Edition

Sept 28: Speed of Implementation

26 Oct: What to do with customization?

Nov 23: The cost of deploying Public Cloud ERP



Expert

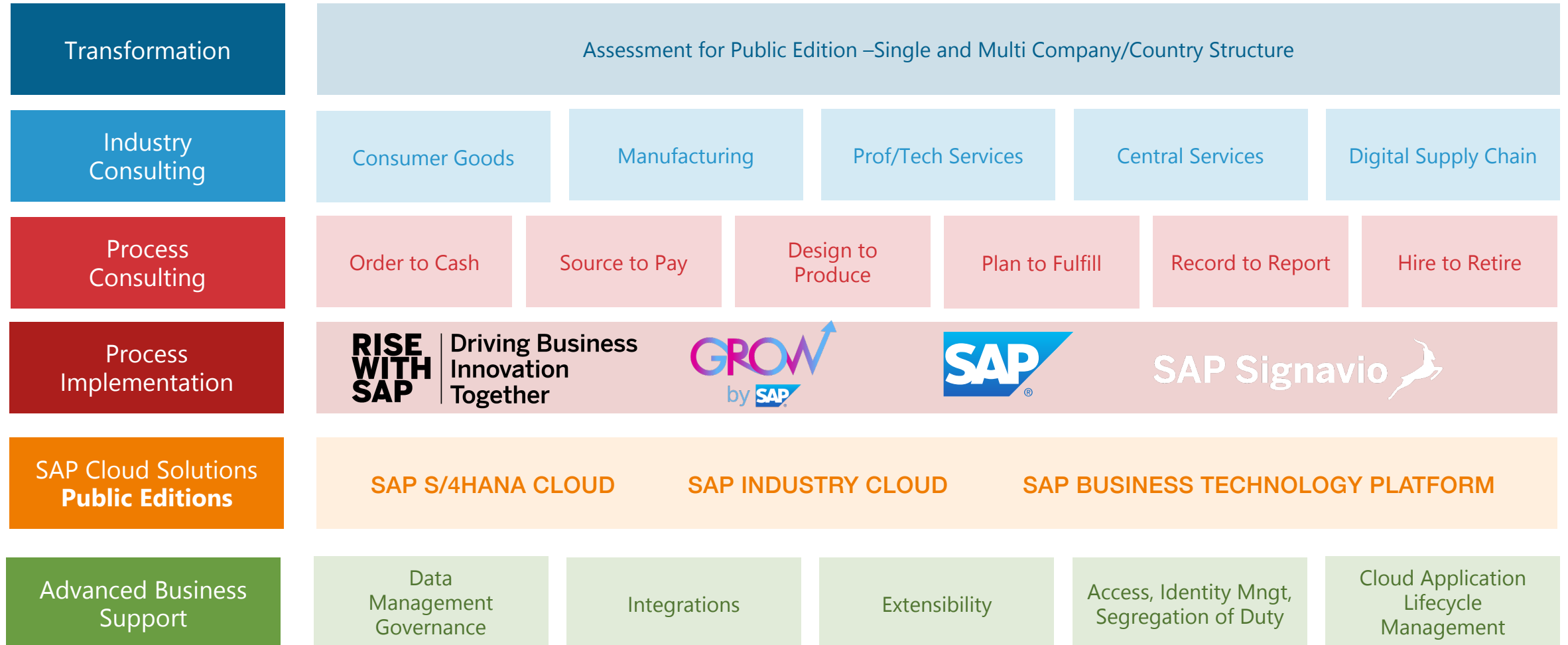


SAP S/4HANA Cloud,
public edition

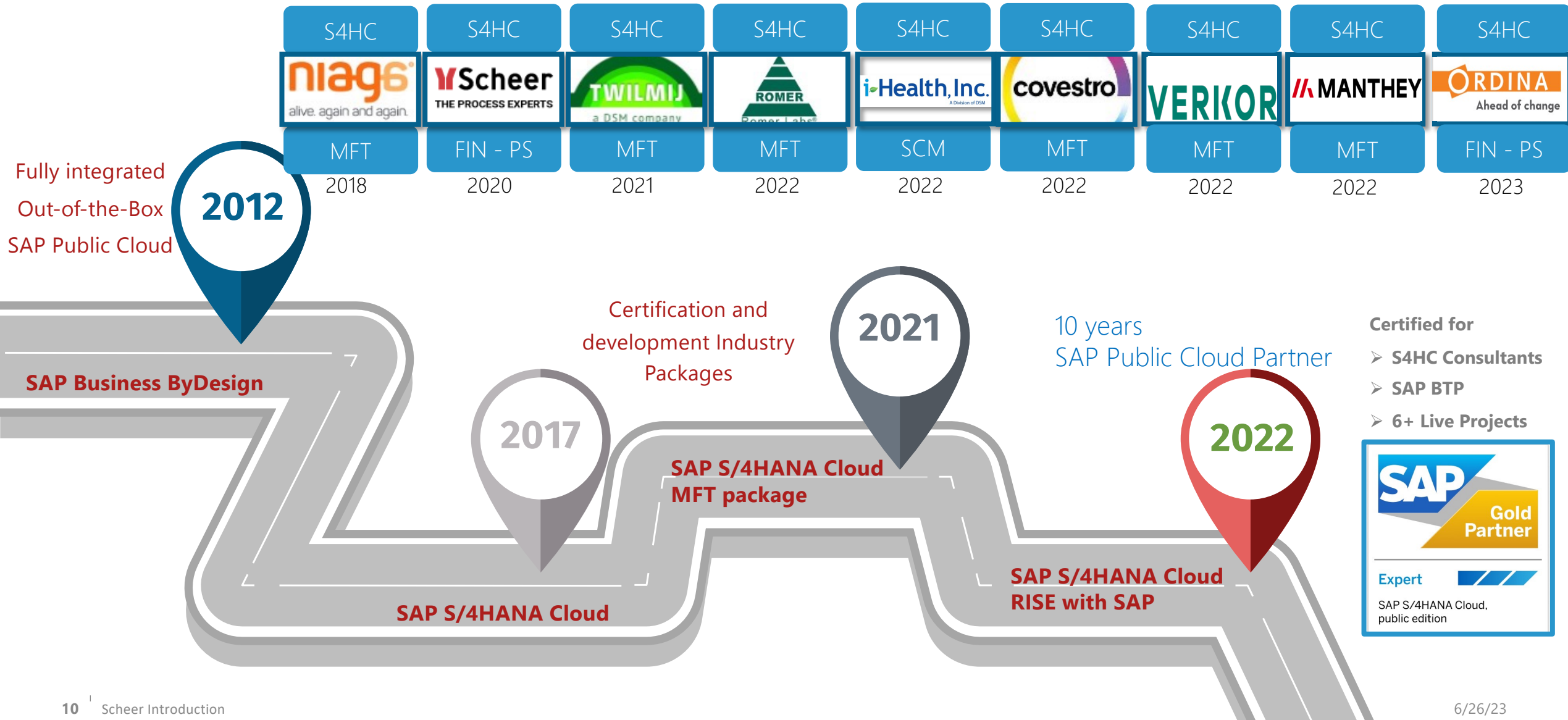
Agenda

Introduction 1	Myths & Perceptions of SAP S/4HANA Cloud, Public Edition? 2	How to implement SAP S/4HANA Cloud, public edition? 3	Q&A 4
...	
5	6	7	

Scheer Netherlands – Service Portfolio



Scheer - SAP S/4HANA Public Cloud Footprint



What tell our customers us

Low TCO

Ready to growth & to
innovate

Happy Users

Speed of implementation

Agenda

Introduction

1

Myths & Perceptions of
SAP S/4HANA Cloud,
Public Edition?

2

How to implement
SAP S/4HANA Cloud,
public edition?

3

Q&A

4

...

5

...

6

...

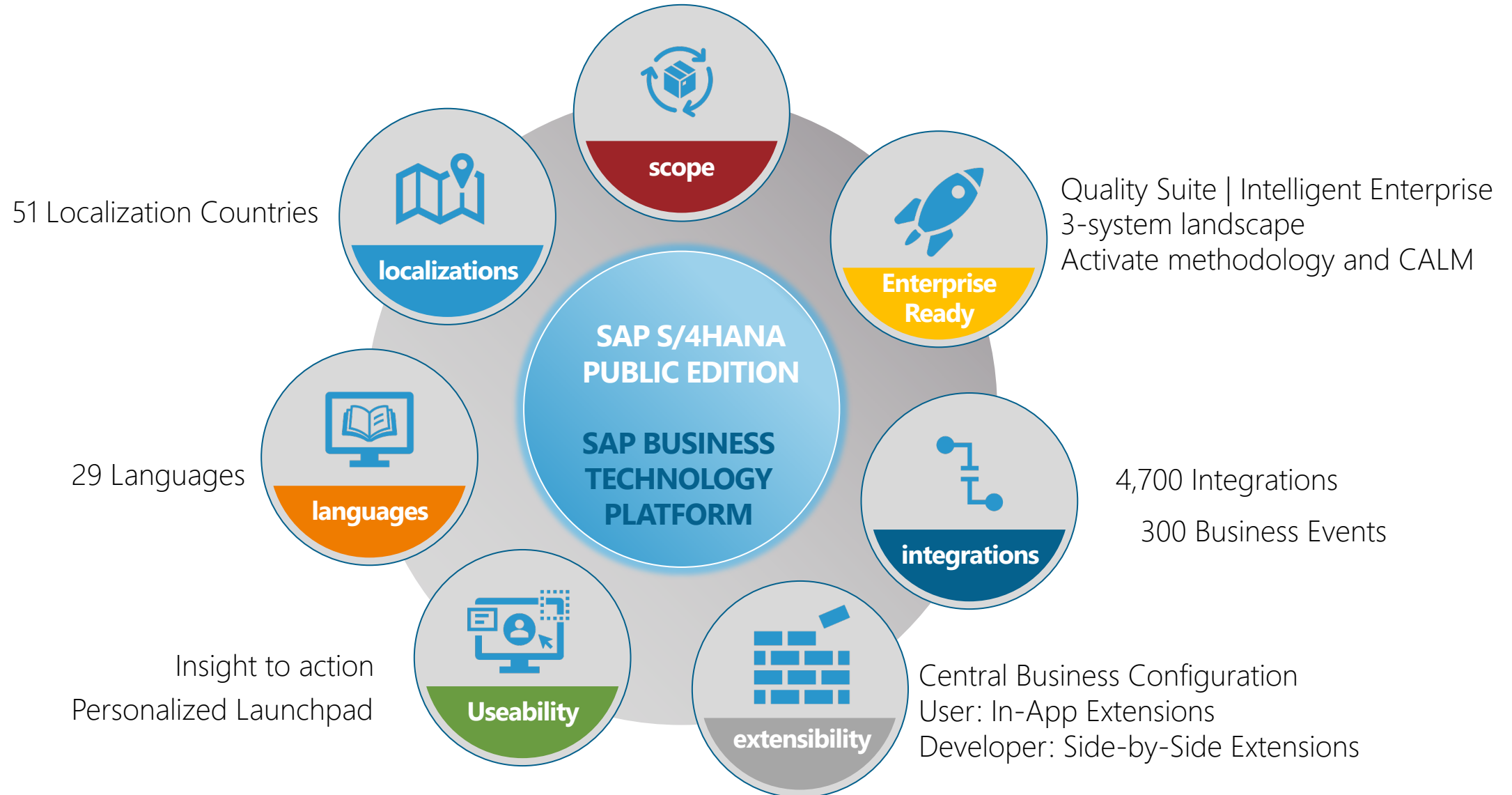
7

SAP S/4HANA Cloud - Myths and Perceptions

- ✓ Cloud ERP is for smaller companies, it is missing functionality
- ✓ We are a global company, it is missing localizations
- ✓ We have many non-SAP applications, it has no integrations
- ✓ We use various SAP products and run various parallel projects, S/4HC has a lack of enterprise readiness
- ✓ We have special processes and requirements, which we cannot support with the limited extensibility of S/4HC
- ✓ I heard S/4HC has an inconsistent User interface
- ✓ I have not heard of any implementation in our industry or not seen references

S/4HANA Cloud, Public Edition - Full Scope ERP

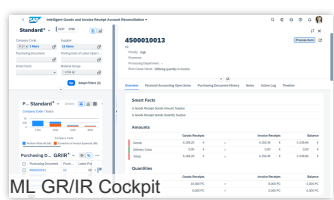
675+ Scope Items





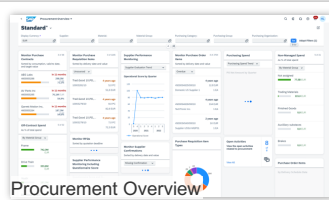
Industry Best Practices – End-to-End Process support

Built-in best practices and Industry-specific processes



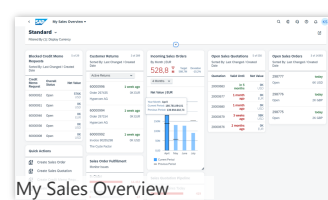
Finance

- Accounting and financial close
- Receivables and Payables mgmt.
- Cost mgmt. & profitability analysis
- Treasury & working capital mgmt.
- Governance Risk and Compliance



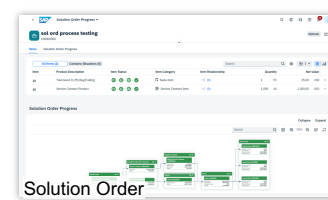
Procurement

- Procurement of direct materials and services
- Supplier management
- Central procurement



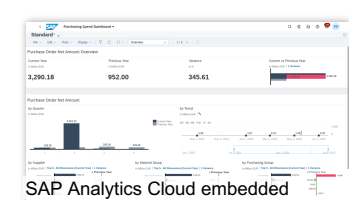
Sales

- Sell, deliver, bill, and monitor a combination of physical goods and services as one solution offering
- Sell from Stock & Sell Services
- Convergent & External Billing



Service

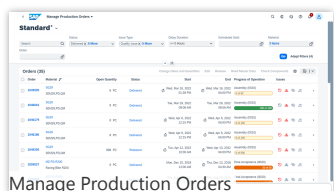
- After-sales services with service contracts, service deliveries, and billing with cost controlling and revenue recognitions
- Combine sales & services as packaged solution offerings



Industry capabilities

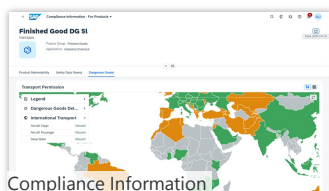
- Professional services
- Public sector
- Higher education
- Media
- Financial services

SAP S/4HANA Cloud – Public Edition



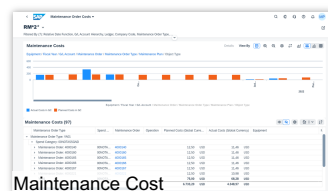
Manufacturing

- Material requirements planning with demand driven and/or predictive MRP
- Make to stock and make to order
- Quality management
- Environment, Health and Safety



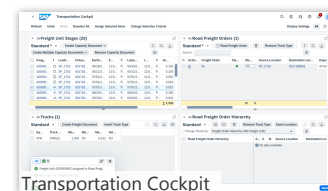
R&D

- Product compliance
- Enterprise portfolio and project management
- Advanced Variant configuration



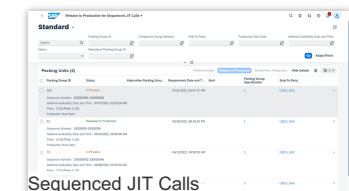
Asset management

- Reactive and proactive maintenance
- Resource scheduling for maintenance planner
- Enhanced collaboration and review



Supply chain

- Warehouse Outbound & Inbound Processing
- Core Inventory Management
- (Advanced) ATP Processing
- Basic Transportation Mgmt.



Industry capabilities

- Component manufacturing
- Hi-tech
- Automotive
- Mining services



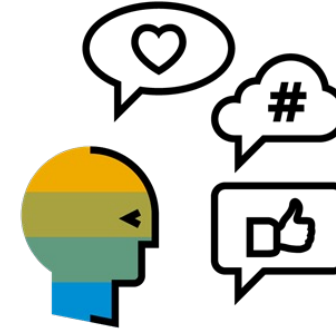
S/4HANA Public Cloud – Localization Coverage



51*

Local Versions

Australia, Austria, Belgium, Brazil, Canada, China, Czechia, Denmark, Finland, France, Germany, Hong Kong (China), Hungary, India, Indonesia, Ireland, Italy, Japan, Luxembourg, Malaysia, Mexico, Netherlands, New Zealand, Norway, Philippines, Poland, Portugal, Romania, Russia, Saudi Arabia, Singapore, South Africa, South Korea, Slovakia, Spain, Sweden, Switzerland, Taiwan (China), Thailand, Turkey, United Arab Emirates, United Kingdom, United States, Colombia, Chile, Bulgaria, Qatar, Croatia(2208.2), Egypt, Greece (Early Adoption), Argentina(Early Adoption)



29

Languages

Arabic, Bahasa (Malaysia), Chinese (simplified), Chinese (traditional), Czech, Danish, Dutch, English, Finnish, French, German, Greek, Hebrew, Hungarian, Italian, Japanese, Korean, Norwegian, Polish, Portuguese, Romanian, Russian, Slovak, Spanish, Swedish, Thai, Turkish, Bulgarian, Croatian

* Croatia available from 2208.2 onwards for activation and usage from Jan 2023



S/4HANA Public Cloud – Localization Kit

Enables extending localization beyond standard



Tax

- Validating a tax number
- Calculating indirect taxes
- Utilizing custom sales pricing procedure
- Accessing tax service request and response payloads for a document
- Determining tax code automatically in purchase orders
- Determining tax code in purchase documents using condition technique



Reporting

- Creating a new VAT report using Advanced Compliance Reporting
- Creating a new Balance sheet and Profit and Loss (P&L) using Advanced Compliance Reporting
- Creating a new Withholding Tax report using Advanced Compliance Reporting
- Defining a Localized Version of a Withholding Tax report
- Creating ad hoc reports in Advanced Compliance Reporting
- Extending SAP S/4HANA Cloud for Japan Subcontract Act

Other areas like:

Payment

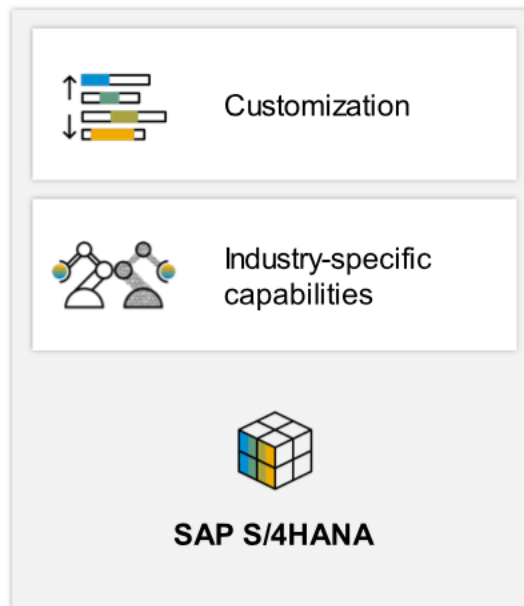


SAP S/4HANA Cloud Agile Modular Cloud

Moving to the cloud from a heavy, complex, and highly customized monolith to an agile modular cloud enabling business model innovation and driving growth of the top line

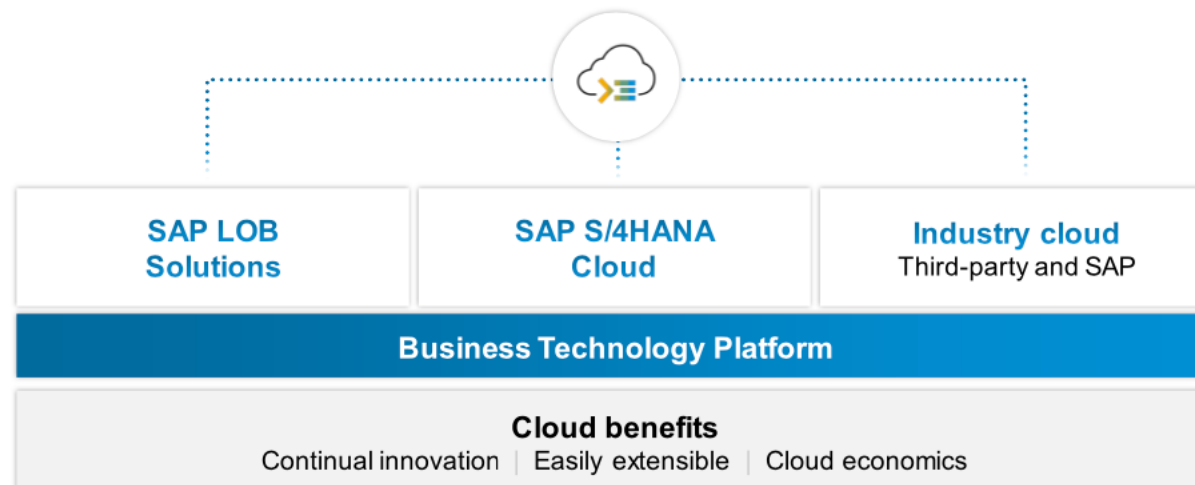
Monolithic architecture

On-premises



Cloud modular architecture

Head of sales operations	SAP Subscription Billing	Solution Order Management	SAP Order Mgmt Foundation
Head of supply chain	Integrated Business Planning	Inventory Management	SAP Warehouse Insights
Head of service operations	Cloud for Services	Services Core	Field Service Management Core Systems

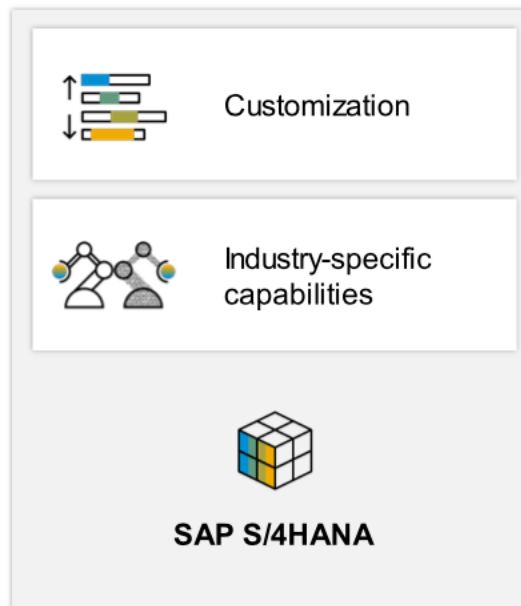




SAP S/4HANA Cloud **Agile Modular Cloud**

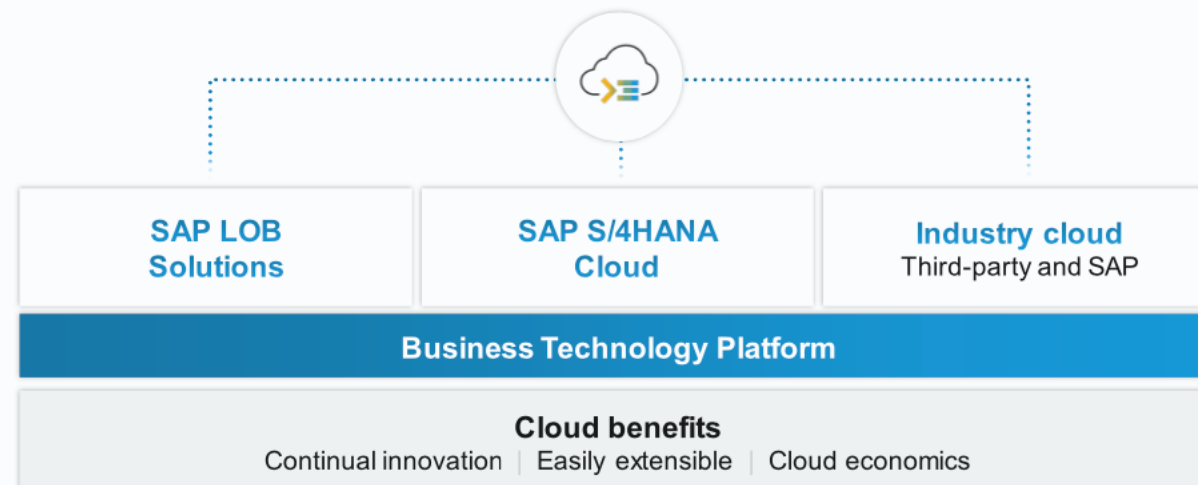
Moving to the cloud from a heavy, complex, and highly customized monolith to an agile modular cloud enabling business model innovation and driving growth of the top line

Monolithic architecture On-premises



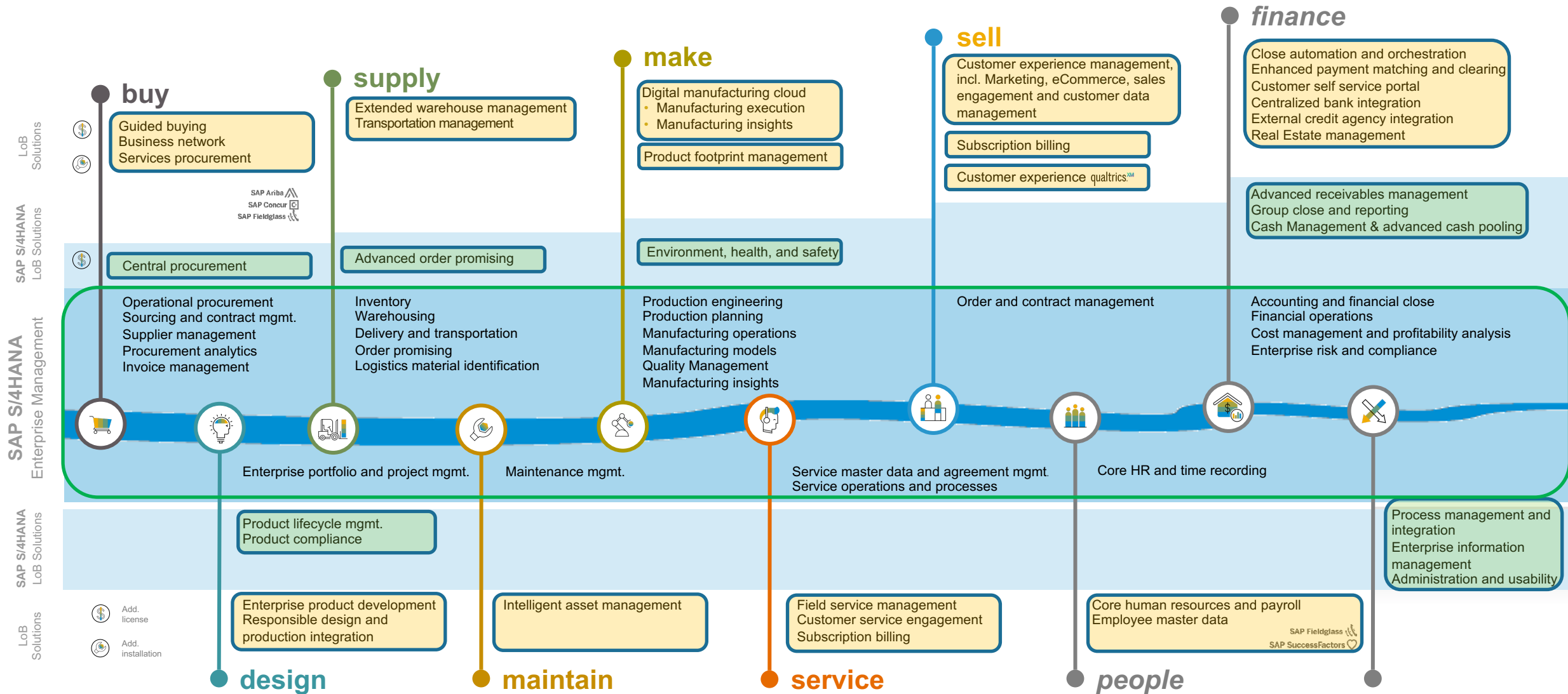
Cloud modular architecture

Head of sales operations	SAP Subscription Billing	Solution Order Management	SAP Order Mgmt Foundation
Head of supply chain	Integrated Business Planning	Inventory Management	SAP Warehouse Insights
Head of service operations	Cloud for Services	Services Core	Field Service Management Core Systems





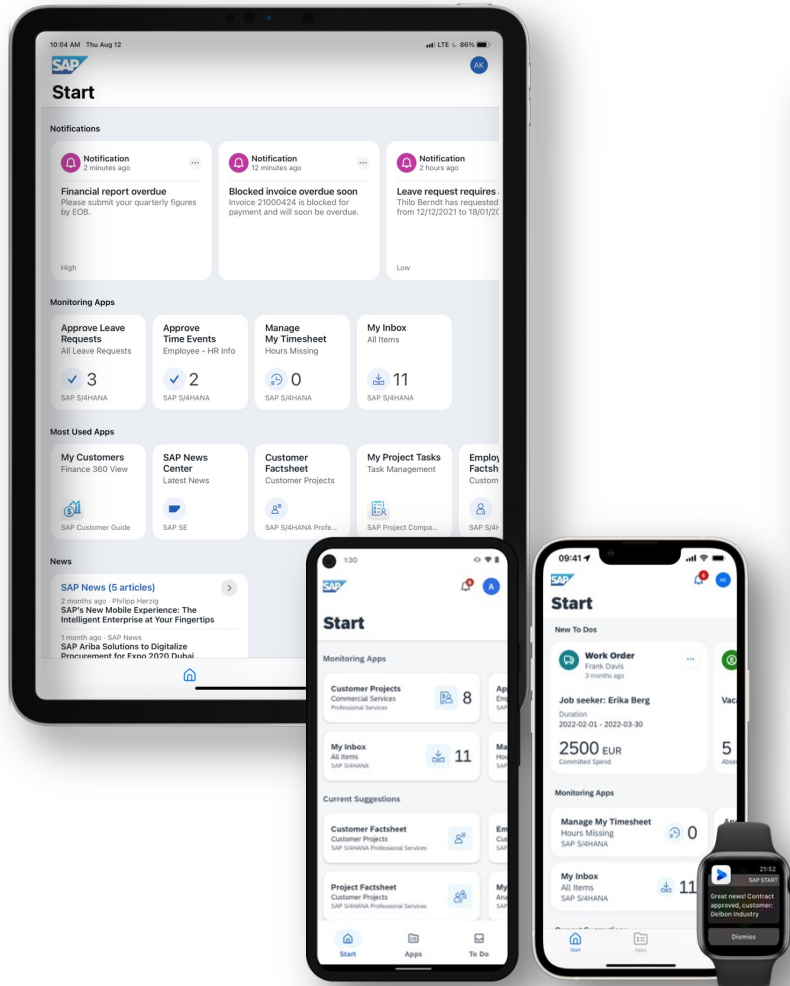
SAP S/4HANA Cloud Modular Application Portfolio



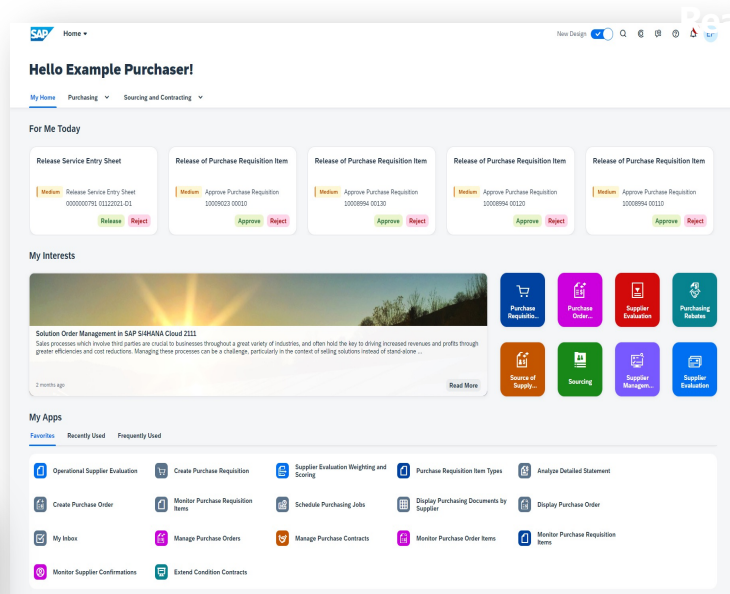


Intuitive User Interface

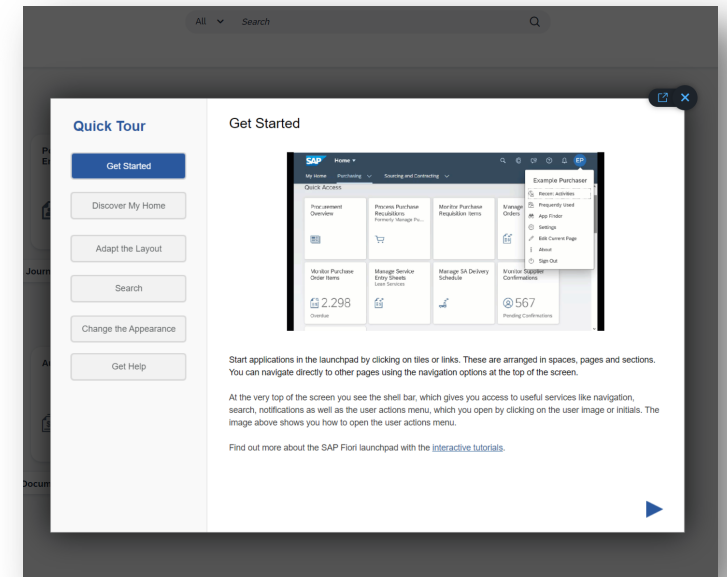
SAP Mobile Start



New UX - Horizon Visual Theme



Embedded guidance/ support





Central Business Configuration

Define Scope

Project Name: TDD New Demo System Customizing Status: **Completed** Countries / Regions:: Germany, Netherlands

My Selected Scope (377)

Select Countries/Regions

Complete Activity

Close

Line of Business:

Industry:

Bundles and Scenarios:

Countries / Regions:

Locked / Unlocked:

Item Name	Action
Bundles (3)	
Baseline Accelerator	<button>Remove</button>
Enterprise Management	<button>Remove</button>
Retail	<button>Add</button>
Scenarios (572)	
ABAP core data services extraction for SAP Data Intelligence (53M)	<input type="text" value="Countries/Regions"/> <button>Add</button>
ABAP core data services extraction for SAP Data Warehouse Cloud (53L)	<input type="text" value="Countries/Regions"/> <button>Add</button>
ABAP Core Data Services Extraction for SAP HANA (6N4)	<input type="text" value="Countries/Regions"/> <button>Add</button>
Accounting and Financial Close (J58)	<input type="text" value="Countries/Regions"/> <button>Remove</button>
Accounting and Financial Close - Group Ledger IFRS (1GA)	<input type="text" value="Countries/Regions"/> <button>Remove</button>
Accounting and Financial Close - Group Ledger US GAAP (2VA)	<input type="text" value="Countries/Regions"/> <button>Add</button>
Accounting for Incoming Sales Orders (2FD)	<input type="text" value="Countries/Regions"/> <button>Remove</button>
Accounts Payable (J60)	<input type="text" value="Countries/Regions"/> <button>Remove</button>
Accounts Receivable (J59)	<input type="text" value="Countries/Regions"/> <button>Remove</button>
Activity Management in Procurement (19C)	<input type="text" value="Countries/Regions"/> <button>Remove</button>
Actual Costing (33Q)	<input type="text" value="Countries/Regions"/> <button>Remove</button>
Advanced Available-to-Promise Processing (1JW)	<input type="text" value="Countries/Regions"/> <button>Remove</button>

Project Name: TDD New Demo System Customizing Status: **Completed** Countries / Regions:: Germany, Netherlands

My Selected Scope (377)

Select  Project Experience

TDD New Demo System Customizing Project Type: Evaluation Phase: **Product-Specific Configuration**

Search

Activities

Configuration Activities

Teams

Deployment Targets

Countries / Regions:

All

Search

Activities for Phase:

Product-Specific Configuration

Mandatory / Optional:

Show All

Item Name
Bundles (3)
Baseline Accelerator
Enterprise Management
Retail
Scenarios (572)
ABAP core data services extraction f
ABAP core data services extraction f
ABAP Core Data Services Extraction
Accounting and Financial Close (J58
Accounting and Financial Close - Gro
Accounting and Financial Close - Gro
Accounting for Incoming Sales Order
Accounts Payable (J60)
Accounts Receivable (J59)
Activity Management in Procurement
Actual Costing (33Q)
Advanced Available-to-Promise Proc

Open

Configure Marketing

Manage

Configure the Marketing details based on your individual business requireme... [More](#)

Open

Configure Service

Manage

Configure the Services details based on your individual business requiremen... [More](#)

Configuration

Can Be Completed

Total

In Progress

Completed

51

0

0

Activities

Activities

Activities

Open

Configure Manufacturing

Manage

Configure the Manufacturing details based on your individual business requi... [More](#)

Configuration

Can Be Completed

Total

In Progress

Completed

62

0

0

Activities

Activities

Activities

Open

Configure Real Estate, Facilities and Equipments

Manage

In Progress

Configure Organizational Entities

Manage

Configure the details of organizational entities in SAP S/4HANA Cloud.

Configuration

Can Be Completed

Total

In Progress

Completed

7

1

0

Activities

Activities

Activities

Open

Configure Sales

Manage

Configure the Sales details based on your individual business requirements.... [More](#)

Configuration

Can Be Completed

Total

In Progress

Completed

190

1

0

Activities

Activities

Activities

Open

Configure Procurement

Manage

Configure the Procurement details based on your individual business require... [More](#)

Configuration

Can Be Completed

Total

In Progress

Completed

203

2

0

Activities

Activities

Activities



Central Business Configuration

Define Scope

Project Name: TDD New Demo System Customizing Status: **Completed** Countries / Regions:: Germany, Netherlands

My Selected Scope (377)

Select **SAP** Project Experience

TDD New Demo System Customizing

Project Type: Evaluation Phase: **Product-Specific Configuration**

Search

Activities Configuration Activities Teams Deployment

Countries / Regions:

All Search

TDD New Demo System Customizing

Project Type: Evaluation

Phase: **Product-Specific Configuration**

Switch Project

Initiate Change

Activities **Configuration Activities** Teams Deployment Targets

Show Filter Bar

Item Name

Bundles (3)

Baseline Accelerator

Enterprise Management

Retail

Scenarios (572)

ABAP core data services extraction f

ABAP core data services extraction f

ABAP Core Data Services Extraction

Accounting and Financial Close (J58

Accounting and Financial Close - Gro

Accounting and Financial Close - Gro

Accounting for Incoming Sales Order

Accounts Payable (J60)

Accounts Receivable (J59)

Activity Management in Procurement

Actual Costing (33Q)

Advanced Available-to-Promise Proc

Open

Configure Marketing

Configure the Marketing details based on your individual bu

Configure Service

Configure the Services details based on your individual busi

Configuration **Can Be Completed**

Total	In Progress	Completed
51	0	0
Activities	Activities	Activities

Configure Manufacturing

Configure the Manufacturing details based on your individua

Configuration **Can Be Completed**

Total	In Progress	Completed
62	0	0
Activities	Activities	Activities

Configure Real Estate, Facilities and Equipments

Configuration Activities

Areas

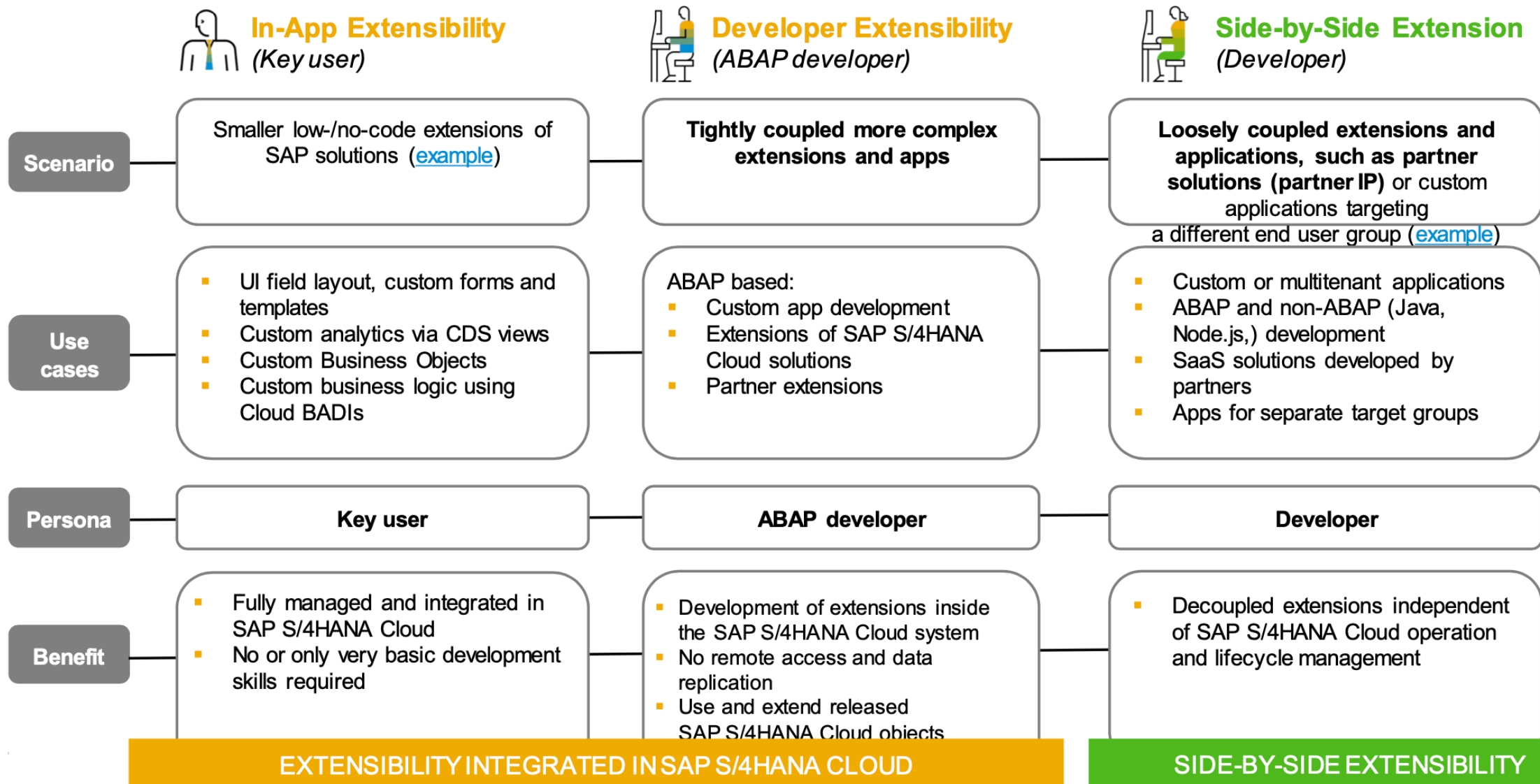
- ☐ Organizational Entities
- ☒ Sales
- ☐ Service
- ☐ Procurement
- ☐ R&D / Engineering
- ☐ Demand and Supply
- ☐ Manufacturing
- ☐ Logistics, Transportation, and...
- ☐ Compliance, Trade and Quality
- ☐ Real Estate, Facilities and Eq...
- ☐ Projects
- ☐ Financial Operations
- ☐ Accounting
- ☐ Human Resources
- ☐ General Business Data
- ☐ General Settings
- ☐ Assets
- ☐ Billing and Invoicing
- ☐ Solutions

Configuration Activities

Sales

- ☐ Pricing Procedure Counter Grouping *
- ☐ Specify Storage Locations for Follow-Up Activities
- ☐ Define Rules for Picking Location Determination
- ☐ Change Field Catalog for Condition Tables
- ☐ Assign Sales Document Types Permitted for Sales Areas
- ☐ Sell from Stock *
- ☐ Map Responsibility Management Functions to JIT Actions
- ☐ Assign Condition Types to Exclusion Groups
- ☐ Set Copying Control: Sales Document to Sales Document
- ☐ Define Instructions for Planning Delivery Schedules
- ☐ Automation of Order-to-Invoice with Ariba Network *
- ☐ Define Text Types for Sales Texts in Customer Master
- ☐ Specify Authorization Validity Periods
- ☐ Sales Scheduling Agreements *
- ☐ Define Scheduling By Sales Document Type
- ☐ Assign Incompleteness Procedures to Delivery Item Categories
- ☐ Define Formulas for Validity Dates
- ☐ Define Text Types for SD Document Item

Extensibility Options for SAP S/4HANA Cloud



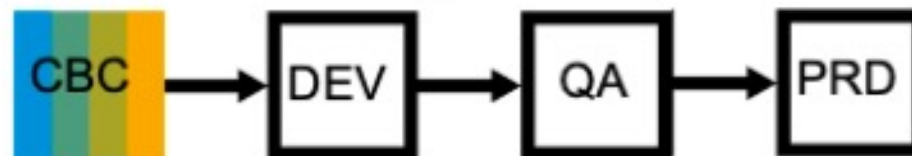


Enterprise Ready

3 SL delivers control and scalability to serve implementation project needs of all project sizes

In-App embedded extensibility and Side-by-side provides maximum flexibility for innovations

Three system landscape, enhanced extensibility and openness



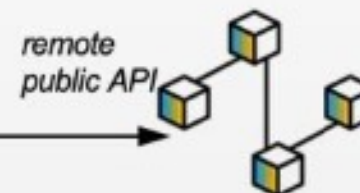
Key User Extensibility



Developer Extensibility

SAP S/4HANA Cloud ABAP Environment

EXTENSIBILITY INTEGRATED IN S/4HANA CLOUD



Side-by-side Extensibility

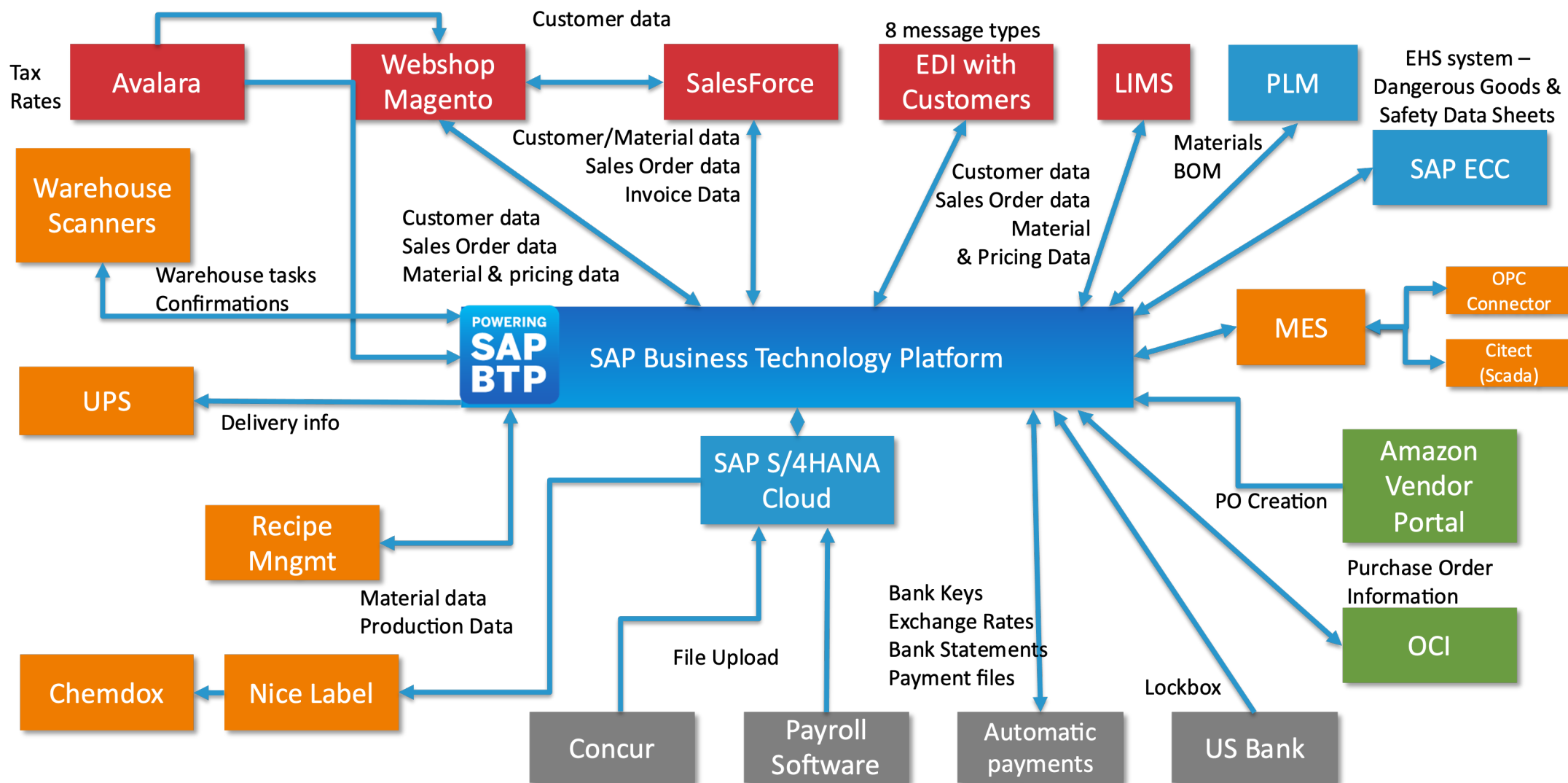
SAP Business Technology Platform

SIDE-BY-SIDE EXTENSIBILITY

Let's look in the S/4HC system



Example existing integrations with Public Edition



What tell our customers us

Flexibility of the modular ERP
solution and continuous innovations
Activate and go!

Happy with the upgrade
information and tooling

Openness and Extensibility

Supporting tools (Activate,
CALM, CBC, EnableNow)
for implementation and
operational

SAP S/4HANA Cloud - Myths and Perceptions

✓ ~~Missing functionality~~



Full ERP functionality for many industries

✓ ~~Missing localizations~~



51 localizations and 29 languages

✓ ~~No integrations~~



S/4HC on BTP for event-based integrations and extensions

✓ ~~Lack of enterprise readiness~~



Three system landscape and modular cloud

✓ ~~Limited extensibility~~



(Key-user) In-app and side-by-side extensibility

✓ ~~Inconsistent User interface~~



Next Generation UI and embedded intelligence

✓ ~~No references~~



Scheer alone has already many go-lives in the last five years across industries

Agenda

Introduction

1

Myths & Perceptions of
SAP S/4HANA Cloud,
public edition?

2

How to implement
SAP S/4HANA Cloud,
public edition?

Q&A

4

...

5

...

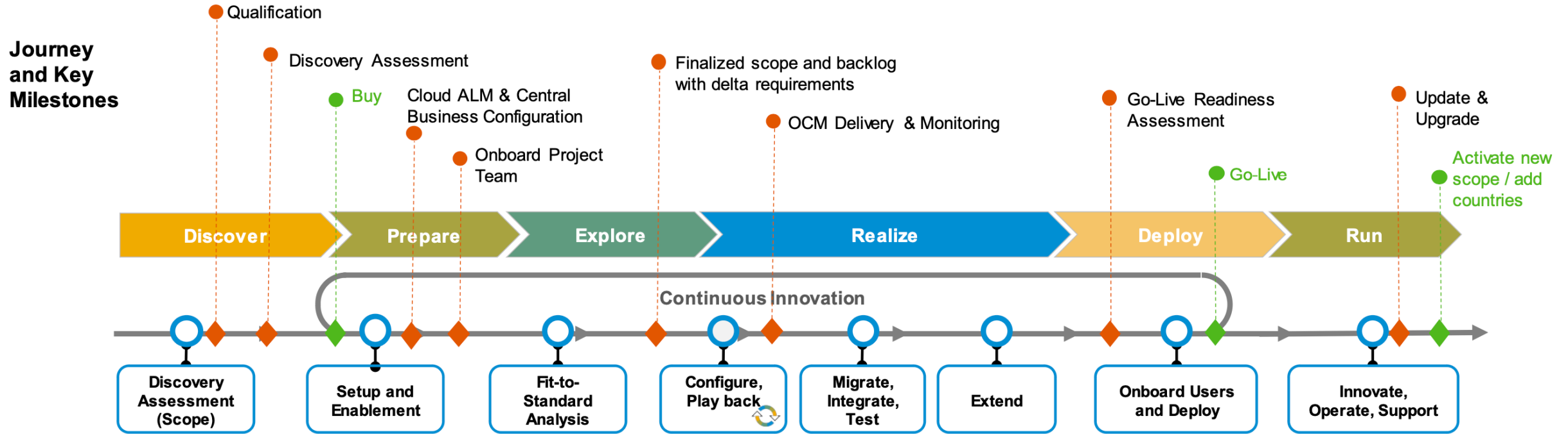
6

...

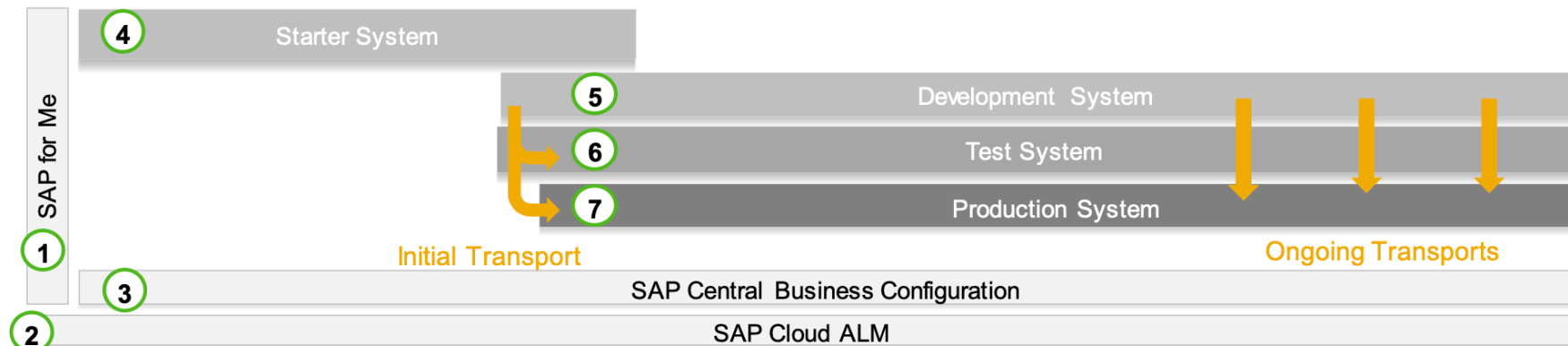
7

How to implement S/4 Public Cloud?

SAP Activate Journey Overview and Key Milestones



System Landscape



Feedback from customers ... Lessons Learned

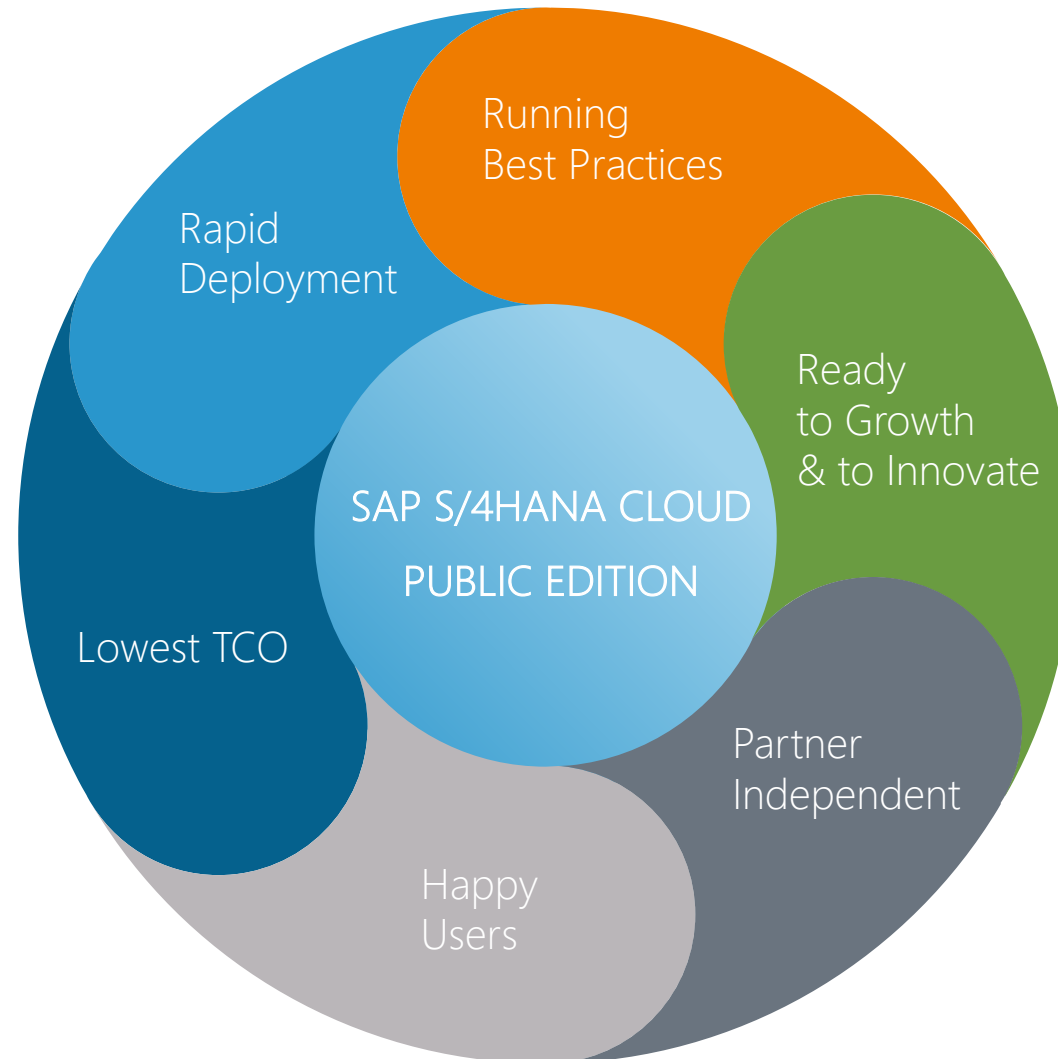
Start with S/4HANA Cloud training before the start of the project

Invest in creating a Cloud Mindset

Time spend during
Fit-to-standard will save
time in realization

Realization in Sprints of
2 – 4 weeks with demo by
key-users

So, don't wait and start with SaaS-ERP for your Business



Agenda

Introduction	1	Myths & Perceptions of SAP S/4HANA Cloud, public edition?	2	How to implement SAP S/4HANA Cloud, public edition?	3	<u>Q&A</u>
...			
	5		6		7	

Q & A

Webinar Specials



SAP S/4HANA CLOUD, Public Edition

SAP S/4HANA Cloud, Public Edition:

Sept 28: Speed of Implementation

26 Oct: What to do with customization?

Nov 23: The cost of deploying Public Cloud ERP



Expert



SAP S/4HANA Cloud,
public edition

MAKE A MOVE TO THE NEXT GENERATION ERP



Thank you

YScheer

Your partner for SAP consultancy, transition and implementation support