



EZY-System

Magnetic Field Therapy

for use as an aid in the management of musculoskeletal disorders



Operation Manual

Centurion

EZY-System

Table of Contents

1. System Information	Page
1.1 Introduction.....	4
1.2 System Definitions, Symbols, Warnings, Cautions and Notes.....	5
1.3 Contraindications.....	5
2. Installation Instructions	
2.1 System Contents.....	6
2.2 System Assembly.....	6
2.2.1 Connection of Power and Applied Part.....	6
2.2.2 Positioning of the Coil.....	8
3. Operating Instructions	
3.1 The EZY-System Controller.....	10
3.2 EZY-System Operation.....	11
3.3 Labeling and Marking.....	12
4. Using Magnetic Field Therapy	
4.1 Explaining Magnetic Field Therapy.....	13
4.2 ABC's of Magnetotherapy.....	14
4.3 Protocol Information.....	16
5. Maintenance	

5.1 Cleaning and Inspection.....	17
5.2 Service Instructions.....	17
5.3 Warranty.....	18
5.4 Service Policy.....	18
5.5 Service Information.....	18
6. Troubleshooting	
6.1 General Operation Checkup.....	20
6.2 General Troubleshooting.....	20
7. Technical Specifications	
7.1 Regulatory Compliance.....	21
7.2 Equipment Classifications.....	21
7.3 Electrical Specifications.....	21
7.4 Physical specifications.....	21
8. Storage.....	22
9. Shipping & Transportation.....	22
10. Three Month Rental Program.....	22
11. Commonly Asked Questions.....	22
12. Contact Information.....	23

1. SYSTEM INFORMATION

1.1 INTRODUCTION

The CENTURION MEDICAL CORPORATION has designed and manufactured Pulsating Magnetic Field Therapy (or “PMF”)¹ equipment for over 25 years. As an industry leader, Centurion’s equipment has been designed to fill the market needs of clinics and hospitals, as well as the ever-expanding home market.

To ensure customer safety and equipment reliability, great care has been taken to design all of the Centurion equipment to the highest available standards. Full quality control and complete product testing are standard in our manufacturing process. Every unit produced is calibrated precisely, and tested to meet exact criteria to guarantee trouble free operation.

Magnetic Field Therapy is a modality that has been evolving for nearly 100 years. Over the last thirty years, serious research has been carried out to investigate and substantiate the claims that have been made regarding the therapy. Now, through research being conducted worldwide by colleges, clinics, and technicians, as well as thousands of anecdotal reports, we have arrived at what we feel to be the optimum frequency, time and intensity levels for this modality.

The practical application of pulsating magnetic fields is achieved through the basic principles of electromagnetism. That is, if a current is passed through a conductor, a magnetic field will be set up in that conductor that is perpendicular to the conductor and, if combined with other conductors, as is found in a coil structure, these fields are additive. By controlling the amount of current that is directed toward a particular coil structure, we can effectively control the field that will be induced onto the coil. By further controlling the frequency of the current directed to the coil, we can create a pulsing action that will continuously turn the field on and off. The pulse frequencies are preset on the EZY-System to 4 intervals ranging from 2-30 Hertz. Session time length may be varied in 10-minute increments ranging from 20-60 minutes (the normal maximum time per session).

This manual will give you a much better understanding of the Centurion EZY-System, how to properly use the therapy to achieve maximum benefits, and how to take care of the equipment so that you can continue to enjoy the benefits for years to come.

NOTE: The settings suggested are intended to be a guide to help you achieve the best possible results. Consult your physician for assistance in determining the proper settings for your indications. This manual provides operating instructions for the Centurion EZY-System, as well as routine maintenance, safety and trouble-shooting instructions. Please read carefully before using your Centurion system. Keep the manual for future reference and refer to it as often as needed for safe and efficient use.

¹ Also commonly referred to as *PEMF* (Pulsed Electro-Magnetic Field) Therapy

1.2 SYSTEM DEFINITIONS, SYMBOLS, WARNING, CAUTIONS AND NOTES

Please read this section thoroughly before operating your Centurion System. Included below are definitions of terminology and symbols used in this manual and/or used on equipment markings, operational warnings, cautions and notes for the safe operation of the Centurion EZY-System.

DEFINITIONS

WARNING



Specific Information provided to the user to advise of situations where the misuse or unlabelled use of the device could present potential harm to the user or patient and/or could result in irreparable damage to the device or property. Also found on equipment to alert reader to consult accompanying documents prior to operation.

CAUTION



Specific information provided to the user to prevent misuse of the device that may cause it to malfunction.

NOTES

- General information provided to the user to further explain or clarify the proper operation of the device and/or its accessories or applied parts.

APPLIED PARTS

- “Applied Part” is the term used to refer to any of the applicators that are used to provide the actual session to the patient. (i.e.: “Lightweight Coil”)



WARNINGS - GENERAL

- **Do not splash or expose electric parts of the system to water or moisture. Doing so may permanently damage it and/or result in significant personal injury and property damage.**

NOTE: Pulsating Magnetic Fields are used as an aid in the management of chronic pain and musculoskeletal conditions.

1.3 CONTRAINDICATIONS



WARNING - Magnetic fields are produced when the modality is operational and may interfere with Pacemakers and Electronic Stimulators.



WARNING - During the last trimester of Pregnancy, the therapy should not be used.

NOTE: Although the system is very simple and safe to use, it is always wise to consult with a physician about any new indication

2. INSTALLATION INSTRUCTIONS

2.1 SYSTEM CONTENTS

Your Centurion EZY-System comes packaged in one box. You will have the following components included in your system:

- 1 – EZY-System Handheld Controller
- 1 – EZY-System Lightweight Coil
- 1 – Applied Part Cable
- 1 – Power Cord
- 1 – Power Adapter Assembly
- 1 – Operating Manual
- 1 – Test Magnet

2.2 SYSTEM ASSEMBLY

The Centurion EZY-System is completely portable and can be moved wherever required.

2.2.1 CONNECTION OF POWER AND APPLIED PARTS



Figure #1: The EZY-System Controller, Power Adapter and Applied Parts

Referring to Figure #1, the EZY-System is connected as follows:

POWER CORD

- 1) Insert the power cord (E) into the POWER INLET FILTER (D).
- 2) Plug the power cord (G) into the power receptacle.

Note: If the supplied power cord type does not match the receptacle type available in your area, contact Centurion for the correct type.



CAUTION - Ensure that there is a power source nearby. Do not use extension cords to power the system.



WARNING - The safety of this equipment relies on a properly installed Earth connection. Do not connect to an unearthened mains plug or socket. It is the responsibility of the customer to ensure the mains supply in the installation location is correctly earthed.



WARNING - Do not remove the ground pin from the power cord or bend it over or use an extension cord that will allow the cord not to be connected to ground. Failure to maintain a proper ground while operating the equipment may result in injury to the operator and/or patient.

APPLIED PART - COIL

- 1) Position the EZY-System COIL (A) in the general area of use (see 2.2.2 *Positioning of Applied Part* for suggested coil positions) and extract a useable amount of cable from the cable-tied bundle.
- 2) Connect the blue OUTPUT CONNECTOR (B) end of the cable to the APPLIED PART CONNECTOR OUTLET (C) on the EZY-System handheld controller. As shown in figure #2, insert the connector fully, and then turn clockwise. An audible “click” sound indicates the connector is locked into place.



Figure #2: Connecting Output Connector to Handheld Controller

- 3) To release the connector, use your thumb to pull out the metal tab on the connector while twisting the connector counter-clockwise. The cord may then be separated from the controller by pulling back while grasping the connector.

Note: Retain the cable tie with your cord system to effectively manage any excess length of cable.

! WARNING: Connect only Centurion manufactured applied parts recommended for your equipment model. Failure to comply could result in damage to the equipment and/or injury to the operator or patient.

! WARNING - Route all power and applied parts cables so that they are not located in traffic areas or on top of a heating source.

2.2.2 POSITIONING OF THE COIL

The EZY-System coil has been designed for ease of use. Referring to Figures #4-10, you can see how versatile the coil can be. Normally, the area being treated should be in the centre of the coil.

While these are typical positions, you may find alternative positions that maximize your comfort during treatment sessions. While the EZY-System is lightweight and can easily be positioned as and where needed, the elderly and infirm may still require assistance with lifting and positioning the coil. For best results, ensure that the SERIAL PLATE LABEL (see Figure #3) is oriented toward the head of the person receiving the treatment.



Figure #3: Coil Serial Plate Orientation

! WARNING – Please ensure that the connecting and power cables are routed so that they are not in an area where they can be walked on or damaged and in such a way as not to present a tripping hazard. If you are not able to safely position the coil where treatment is needed, do not use the EZY-System.

Typical Sitting* Positions for EZY-Coil System



Figure #4: Feet & Ankles



Figure #5: Calves & Knees



Figure #6: Thighs



Figure #7: Thighs



Figure #8: Lower Back



Figure #9: Abdomen



Figure #10: Shoulders

*You may find that some coil positions are more comfortable in a lying pose. Experiment with the EZY-System on a chair, bed or sofa, to determine the best position for you.



CAUTION: Never force the coil out of its circular shape. Cracking may result.

3. OPERATING INSTRUCTIONS

3.1 The EZY-System Controller

The EZY-System offers the user the choice of four (4) different frequency outputs. The settings are adjusted with selection switches that are conveniently located on the front of the unit. Session time is selectable in ten-minute increments ranging from 20 minutes to 60 minutes. When FREQ (frequency) and TIME selections have been made, the treatments are then easily started or stopped with the START/STOP switches. A two short audible signals sound at the conclusion of the session.



Figure #11: The EZY-System Handheld Controller



Figure #12: Turn Controller ON



Figure #13: Select Frequency



Figure #14: Switch to Time Selection



Figure #15: Select Treatment Time



Figure #16: Start Treatment



Figure #17: Stop Treatment

3.2 EZY-System Operation

All the controls of the EZY-System are on the front panel of the handhold controller unit as per Figure #11. A short beep provides auditory confirmation to the user when pressing any button. Referring to Figures #12-#17, operate as follows:

- 1) Depress the POWER ON/OFF switch to the top position to turn on (see Figure #12)

- 2) **FREQ** light indicates that the frequency setting can now be made. Select the desired frequency (2, 8, 15, or 30 Hz) using the UP and DOWN selector buttons (see Figure #13)
- 3) Switch to time selection by pushing the SELECT button (see Figure #14). **TIME** light indicates that the treatment time can now be selected.
- 4) Select the desired time (20, 30, 40, 50, or 60 minutes) using the UP and Down selector buttons (see Figure #15).
- 5) Start treatment by pushing the START/STOP button (see Figure #16). The START/STOP indicator light will pulse in accordance with the frequency selected (ie. the higher the frequency, the quicker the light will pulse).
- 6) You may stop or pause the treatment by pushing the START/STOP button at any time (see Figure #17). New frequency and time settings may be entered while in this mode. Pressing the START/STOP button again will resume the treatment. The end of timed treatment is signaled by two short beeps.
- 7) When the treatment is complete, turn off the EZY-System by toggling the POWER ON/OFF switch to the bottom position.



CAUTION – Unplug the power cord from mains power supply when the equipment is not scheduled to be used for an extensive period of time.

3.3 LABELING AND MARKING

The markings for the basic operation of the EZY-System are printed directly on the controller faceplate. In addition, there are three (3) labels attached (1 on the reverse side of the controller, 1 on the bottom of the controller, and 1 on the coil) showing electrical ratings, serial number, and service contact information. These labels contain important information about the equipment and should be reviewed by the user.

4. USING MAGNETIC FIELD THERAPY

4.1 EXPLAINING MAGNETIC FIELD THERAPY

Centurion Pulsating Magnetic Fields (PMF) therapy is very efficient and simple to use. From field experience, it has been found that pulsating magnetic fields can aid in the reduction of swelling and the stimulation of tissue. It is particularly beneficial as an aid in control of chronic pain and the management of musculoskeletal conditions.

Centurion PMF works by influencing the body either generally or locally with a magnetic field packed in paramagnetic impulse bundles.² Magnetic fields cannot be absorbed, and simultaneously permeate all target cells when delivered in the Centurion PMF format.

Human and animal organisms consist of a large number of cells which function electrically (See Figure #18). Electric potential has a strong relationship to cellular viability. Our cells have a basic (or rest) potential that is necessary for normal cellular metabolism. The oxygen utilization of the cell, key to cellular rest potential, is proportional to the ion exchange occurring at the cell membrane. The ion exchange can be positively influenced by pulsating magnetic fields.

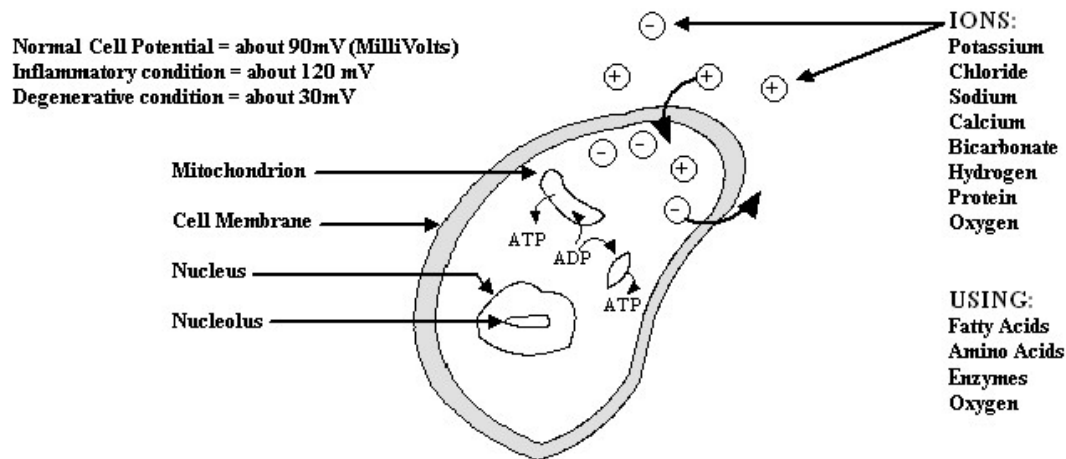


Figure #18: Ionization in a Cell

² We often differentiate between paramagnetic substances, in which a bundling or a concentration of magnetic field lines occur, and diamagnetic substances, in which a decentralization of the field lines results. The only magnetic therapy with a proven, clinical track record uses pulsating, paramagnetic energy. Static magnetic sessions using diamagnetic substances, commonly found in an ordinary fridge magnet, have minimal or no proven effectiveness in controlling chronic pain or treating musculoskeletal conditions.

4.2 ABC'S OF MAGNETOTHERAPY

Magnetotherapy can be more effective when you understand the anticipated effects that each setting will have upon your condition. To effectively apply the therapy to most conditions, and to enhance the success rate, please follow these priorities (See also Figure #19 - *Priority Settings Graph*):

PRIORITIES:

- 1. REDUCE PAIN AND INFLAMMATION**
- 2. STIMULATION**
- 3. INCREASE CIRCULATION**

The priorities are most effectively treated by adjusting the following two user controlled settings:

- A. FREQUENCY**
- B. TIME**

Frequency and time are controlled as represented in Figures #12-17.

A. FREQUENCY:

Frequency is a measurement of the number of pulses per second, and is measured in units known as Hertz (Hz). Frequency has the most impact on the result and is, therefore, the most important setting. The frequency settings of the Centurion EZY-System range from 2 to 30 Hz. As seen in Figure #19, normal Earth magnetic energy varies between 8 and 10 Hz. In the Centurion EZY-System, there is one (1) setting below normal Earth energy, one (1) setting equal to normal Earth energy, and two (2) settings above normal Earth energy. This allows treatment to progress through the different priority stages of the healing process.

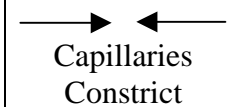
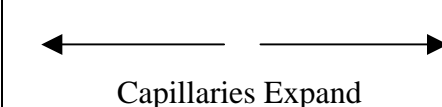
PRIORITIES	Low 1. Reduce Pain & Inflammation	Normal Magnetic Energy	Medium 2. Stimulation	High 3. Increase Circulation
FREQUENCY	2 Hz.	8 Hz.	15 Hz.	30 Hz.
	 Capillaries Constrict		 Capillaries Expand	

Figure #19: Priority Settings Graph

NOTE: After 8:00 in the evening, it is not recommended to use a setting higher than 15 Hz. The stimulating effects of the higher settings may interfere with normal sleep functions. By contrast, the lowest setting (2 Hz) may be very beneficial to relax the body for sleep.



CAUTION: Head Area - Only a low frequency setting (2Hz) is directly used around the head area.

B. TIME:

The EZY-System controller features selectable 10 minute increments ranging from 20 minutes to 60 minutes.

TYPICAL TREATMENT TIMES:

FRESH INJURIES - 60 MINUTES FOR DAYS 1 AND 2 (two separate 30 minute sessions)

CHRONIC INDICATIONS - 60 MINUTES (two separate 30 minute sessions)

Recommended treatment time – 30-40 minutes for all other indications.

PRIORITIES

A) PAIN AND INFLAMMATION

It is extremely important to always start at the frequency setting of 2 Hz for the following reasons:

1. It has a calming, relaxing effect on the body and will help precondition the patient to the therapy.
2. In most cases, inflammation, swelling and chronic pain may reduce quickly.
3. Vassal constriction of the capillaries is enhanced.

It is suggested treatment remain on 2 Hz for a minimum of three (3) days prior to moving to the next priority. In most chronic conditions, where there is still discomfort in the area of concern, it is recommended that treatment remain at 2 Hz. Acute conditions may subside quicker.

B) STIMULATION

After completion of the first priority, stimulation is encouraged by increasing the frequency to 15 Hz for 2-4 days. As this setting is above the normal Earth magnetic field frequency, it will cause the capillaries to expand. The resulting increased blood flow will stimulate glands, tissue and muscles. This stage is excellent for musculoskeletal conditions associated with most sports injuries.

NOTE: If a new injury should occur, or discomfort returns, the frequency must be reduced immediately to 2 Hz).

C) INCREASE CIRCULATION

At this priority setting, vassal dilatation is enhanced. Stay on 30 Hz. for 7 - 21 days until the indication is resolved.

Note: It is extremely important to be on the right setting at the right time. The setting may be adjusted each day depending on what is required. Move the settings up slowly - don't be in a hurry. If swelling or soreness returns, place the settings back to the lowest priority (*Pain and Inflammation*).

SOME THINGS TO WATCH FOR WHEN STARTING THIS THERAPY:

1. You may feel more relaxed - especially important for those who have sleeping disorders.
2. You will normally experience increased voiding during the first week. This is due to the fact that all cells in the cleansing organs are being exposed to the magnetic field and the metabolic rate is enhanced.
3. It is normal for fingernails and toenails to grow faster and become more supple.
4. Hair growth may accelerate.
5. Improved concentration may result.

Finally, it is important to understand a part of the process that may occur with chronic conditions known as the "REACTIVE PHASE". Often, when working with chronic conditions, increasing the settings too quickly may result in discomfort. This is normal and happens at the higher priority stages as a result of the increased blood circulation through a part of the body where, due the original indication, a previous loss of circulation had occurred. The Reactive Phase can easily be recognized by a dramatic increase in discomfort or swelling in the area. If this happens, there is no need for alarm. Simply discontinue the therapy for one (1) day to allow that part of the body to adjust to the increase of blood in the area. Following this rest period, you may continue the therapy at 2 Hz. for three (3) days and then return immediately to Priority 3 (30 Hz). This reactive phase normally only occurs once with any particular injury.



CAUTION – It is advisable to consult a physician when any new condition occurs and prior to beginning magnetotherapy treatment.

4.3 PROTOCOL INFORMATION

The following is an example of a typical program for an average patient:

HZ Frequency Selector	TIME (minutes)	Treatment Days
2	30	5 - 9 DAYS
15	30	2 - 4 DAYS
30	30	7 - 21 DAYS

When first starting the therapy, you might experience some tingling in the body. This sensation indicates the presence of inflammation. When moving up to a higher setting, if the level of discomfort increases, lower the setting back to the frequency of 2 Hz.


5. MAINTENANCE

5.1 CLEANING AND INSPECTION

A schedule of routine maintenance will greatly extend the life of your equipment and ensure that the equipment remains safe to use for both the patient and operator.


CLEANING

The generator and all power and applied parts cords may be wiped down with a damp cloth that has been rinsed in a light detergent solution. The coil may be wiped clean with a damp cloth that has been rinsed in a light detergent solution.


 **WARNING:** Do not clean when equipment is energized. Disconnect power cord from controller unit and from outlet before cleaning. Failure to comply may cause permanent damage.

INSPECTION

Before each use, the system should be inspected to ensure that all parts are in good working order. Inspect all cords for damage to the outer insulation. If there is any damage to the cords or any other parts of the system, have them serviced before using.

 **CAUTION -** Inspect all cables and applied parts daily for any signs of deterioration or damage. Do not use damaged cables as they may present an electrical shock hazard. If damage is observed, arrange to have cables serviced by the manufacturer or authorized service personnel.

5.2 SERVICE INSTRUCTIONS

 **CAUTION:** To prevent the risk of electrical shock, do not open the controller unit. There are no user serviceable parts inside. All repairs must be referred to an authorized qualified technician. Never attempt maintenance operations beyond those described in the operating instructions. Refer to manufacturer or their authorized distributor for any additional required service. Opening of the unit by non-qualified personnel will void the warranty. Always comply with all warnings that appear on the equipment and in servicing instructions.

Consult the *Troubleshooting* section of this manual to help determine the possible source of your service problem. If service is required, refer to the *Sales and Service* contact information located on the controller unit case and at the end of this manual.

5.3 WARRANTY

Your Centurion system has a TWO (2) Year Warranty from the date of purchase or first day of rental. This unconditional warranty covers any and all problems including labor and replacement parts (inbound freight excluded).

NOTE: Any repairs or service work performed by an unauthorized person or company will void the Warranty immediately. An extended warranty package is available to cover any problems that may arise after the second year. This very affordable plan covers all parts and labor (inbound freight excluded). Your Centurion Dealer will keep you informed about the Centurion Warranty extension program. The Warranty is honored at any of the Service Centers in North America or at any of our Service Centers around the world.

5.4 SERVICE POLICY

It is Centurion Medical Corporation's and its Dealers' Policy to, whenever possible, provide service on Centurion systems within 48 hours of the receipt of the equipment. Return shipments will be done by the best available normal shipping method. If a customer wishes to have a higher level of shipping service, they may arrange to have the equipment picked up by their own shipping service or pay the additional cost above normal shipping costs for overnight or the best service available. When sending in equipment for servicing, please allow for shipping time.

NOTE: Unless instructed otherwise, always return all of the parts of the system when sending equipment into the Service Depot. This allows Centurion the opportunity to check over the entire system to determine if there are additional problems that require service attention.

5.5 SERVICE INFORMATION

TO OBTAIN WARRANTY SERVICE:

- Follow the *Operating Instructions* first to try and determine the problem. If the problem remains unresolved, refer to the *Troubleshooting* section for further guidance to determine what the problem may be.
- Phone your nearest Service Depot and provide the following information:
 - Model/Type of equipment. (i.e.: "EZY-System")
 - Serial number of equipment.
 - Complete description of problem.
 - Name, address and contact number of the owner of the system.
 - Shipping name, address and contact number if different than owner's.
- Once authorization for repairs has been received, package the system in its original packing if available, or package in accordance with good commercial practices. Shipment to the Service Depot will be done at the Owner or Renter's expense.

TO OBTAIN OUT OF WARRANTY SERVICE

- Follow the *Operating Instructions* first to try and determine the problem. If the problem remains unresolved, refer to the *Troubleshooting* section for further guidance to determine what the problem may be.
- Phone your nearest Service Depot and provide the following information:
 - Model/Type of equipment. (i.e.: “EZY-System”)
 - Serial number of equipment.
 - Complete description of problem.
 - Name, address and contact number of the owner of the system.
 - Shipping name, address and contact number if different than owner's.
 - Credit card number for payment.
- Once authorization for repairs has been received, package the system in its original packing, if available, or package in accordance with good commercial practices. Shipment to and from the Service Depot will be done at the Owner’s expense.
- Notify the Service Depot if you wish to receive a quote for service prior to work being performed. If the service required to repair the equipment is not authorized by the customer, there will be an estimate charge based on the time spent to evaluate the service problem.
- All out of Warranty repairs will be warranted for 30 Days from the date of shipment to the owner.

END OF LIFE INSTRUCTION

Centurion Systems are designed to last for many years as long as the equipment is kept maintained as per the *Maintenance Instructions*. If, however, the unit becomes irreparable or is no longer required, disposal of the equipment can be made by either returning the equipment to the distributor or manufacturer for disposal, or by complying with your local regulations for the disposal of equipment containing basic electronic parts. This equipment may contain small amounts of materials recognized and regulated as hazardous within the European Union under the *WEEE DIRECTIVE*. EEC consumers are encouraged to contact their European distributor for instructions in proper end of life disposal.

6. TROUBLESHOOTING

If problems occur with the operation of your equipment, the following steps will help determine the cause of the problem. Please perform the following operation checkup and then refer to the *General Troubleshooting* section for assistance in determining the potential problem. This will allow you to provide specific information on the problem when phoning for warranty service.


6.1 GENERAL OPERATION CHECKUP

- Follow the directions given at 2.2.1 to ensure that the equipment under test is energized with the power adapter assembly plugged into the wall outlet and into the power inlet of the controller, and the controller secured through the output connection to the coil.
- Following the directions as shown at 3.2, turn on the controller.
- The red LED screen should indicate the default frequency ("2").
- Press Start. The indicator light should begin to pulse. Note that each time you push a button on the controller you should hear an audible beep.
- Place the magnet supplied with the equipment over the coil to feel the pulse.
- Press Stop. Go to the next frequency setting ("8") and Press Start. Note that the indicator light should be pulsing more quickly. Also, you should feel the pulse quicken in the magnet. Repeat for both "15" and "30" frequency settings noting the indicator light and magnet pulsing with greater frequency as you move up the frequency scale.
- Each time you stop the controller, the indicator light should not pulse and you should not feel any pulsing on the test magnet.
- With the controller off, push the TIME/FREQ SELECT button so that the TIME light illuminates. Test the availability of time selections, cycling through the minutes (20, 30, 40, 50, and 60) by pressing the UP and DOWN buttons.
- Leave the controller on the TIME selection and press START. Wait approximately 1 minute, observing the time counter to ensure that it counts backwards (ex. "30" becomes "29").
- Test sequence is complete. Turn off the power to the unit by pushing the power button.
- If a problem becomes evident, proceed to the *General Troubleshooting* section.

6.2 GENERAL TROUBLESHOOTING

PROBLEM: Machine won't turn on – Red LED area does not light up

SOLUTION: Check to confirm that the power cord is plugged into the power supply outlet and to the POWER INLET FILTER on the generator. Check to confirm that the power cord is in good condition with no obvious signs of damage. Check power outlet to make sure there is power at the outlet.

 **WARNING** – There are no user-replaceable fuses contained in this unit. Do not attempt to service the controller unit. Failure to follow this warning could lead to equipment damage or damage to person and property.

PROBLEM: No output on coil

SOLUTION 1: Check the CONNECTOR OUTLET for dirt and debris. Blow the connector outlet clean with compressed air.

SOLUTION 2: Inspect cord leading to coil for damage. Have the equipment serviced if damage is evident.

7. TECHNICAL SPECIFICATIONS

7.1 REGULATORY COMPLIANCES

This equipment is designed and manufactured in a facility operating in accordance with the following guideline standards:

Quality Assurance and Risk Management

ISO 13485:2003

ISO 14971:2007

7.2 EQUIPMENT CLASSIFICATIONS

Class 3 Electrical Equipment (IEC 60601)

Degree of protection against Electrical shock Type BF Applied Part

Mode of Operation: Continuous

7.3 ELECTRICAL SPECIFICATIONS

Electrical:

Input 115V-230V 60/50 Hz.

Output 24V 2-30 Hz.

FREQUENCIES (Adjustable):

2, 8, 15, 30 Hertz

TREATMENT DURATION (Adjustable):

20, 30, 40, 50, 60 minutes

OUTPUT JACKS:

One locking "Powercon" female receptacle

7.4 PHYSICAL SPECIFICATIONS

Dimensions:

Controller - 6 3/4" x 5 1/8" x 2" (170mm X 130mm x 50mm)
0.65 lbs. (0.3 KG)

Coil - 19 3/8" X 4 1/4" (492mm x 108mm)
6.25 lbs. (2.8 KG)

8. STORAGE

For best results, always store your equipment in a dry environment.

9. SHIPPING AND TRANSPORTATION

The equipment can be easily carried or shipped by putting the equipment into the shipping boxes provided or other shipping boxes suitable for commercial transportation and the product dimensions and weights.

10. THREE MONTH RENTAL PROGRAM

You may not be sure if this is the type of therapy you need at home. But, you have probably heard a lot of positive things being said about the **Centurion Systems** and you might wonder if the therapy will work for you. Our three (3) month rental program will allow you to use the therapy on a trial basis. This program is long enough to enable you to experience the benefits of magnetic field therapy first hand, and short enough that you are not bound to a long-term agreement. At the end of the three-month rental period, there are a number of programs available to help you acquire the **Centurion System** on a lifetime basis.

11. COMMONLY ASKED QUESTIONS

Q1. Is it normal for a person to feel very relaxed during or after a session, especially on a low frequency setting?

ANS: Yes - The low frequency setting has an extremely relaxing effect on the body and it is common to feel extremely relaxed.

Q2. Can Magnetic Field Therapy be used in conjunction with other therapies?

ANS: Yes - The therapy can be used by itself or in combination with other therapies.

Q3. Will I have guaranteed results from using Magnetic Field Therapy?

ANS: No! No therapy or drug will ever be 100% successful in treating all conditions. As each person is different, the results can vary from one to another. The three-month rental program allows you to find out if this therapy will benefit you with the particular problems you experience.

12. CONTACT INFORMATION

SALES AND SERVICE

CANADA

Elec Western Medical Devices Ltd.
1015 Matheson Blvd. E. # 8
Mississauga, Ontario
Canada L4W 3A4
Phone: (905) 238-4860
Fax: (905) 238-9140
Toll Free: 1-800-387-8326

AUTHORIZED EUROPEAN REPRESENTATIVE

Centurion Systems UK & Ireland Ltd.
51 Connor Road
Parkgate, Templepatrick
Bally Clare Co, Antrim
BT39 OEA, Northern Ireland

WORLDWIDE

Toll Free: 1-800-387-8326
E-Mail: info@centurion-systems.com
Website: www.centurion-systems.com

Centurion
MAGNETIC FIELD THERAPY SYSTEMS
are
Designed and Manufactured by:
Centurion Medical Corporation
12, 3610, 29th Street NE
Calgary, Alberta, Canada T1Y 5Z7
Registered ISO Quality System