



ITALTOWER®

HEAVY DUTY LIGHTING TOWERS



Astrid PRO

4x320W LED | 8.5m

LOW EMISSIONS LIGHTING TOWERS

Astrid PRO 4x320W LED | 8.5m

The Astrid Pro is one of ItalTower's best-selling mobile light towers. This mobile light pole is fully equipped. This light pole is very complete as standard with an Amoss kit, day-night sensor and the option to connect to mains power. Thanks to the compact size, as many as 11 light poles can be placed on a trailer. The DSE controller controls and continuously monitors the Yanmar engine.



Events

Long autonomy and low noise.



Rental

Easy to use, long autonomy and low fuel consumption.



Build

Durable, robust and developed for intensive use.

AUTONOMY

LIGHT AREA

COST SAVINGS

FOOTPRINT



11x



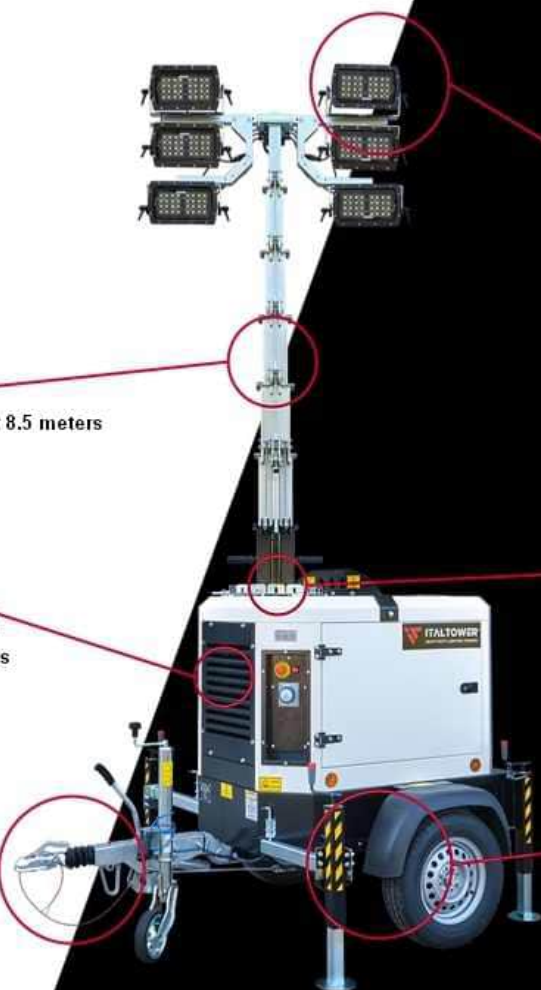
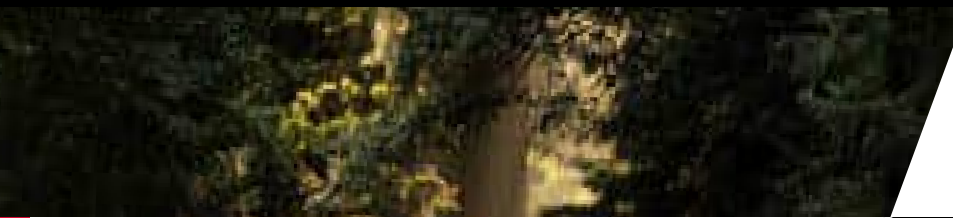
13,5 m



11x



12 m



Lift

Galvanized aerial mast 8.5 meters hydraulic lift

Performance

Comap AMF25 Controller
4x 200 AH crystal batteries

Amoss-kit

The mast lowers automatically when the Handbrake is not applied

Lights

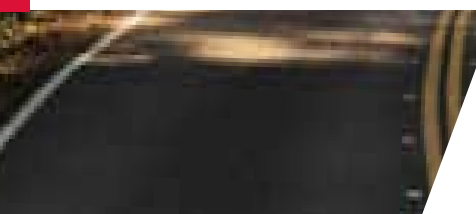
High quality IP65 LED lamps.
Lifespan of 50,000 hours.

Rotation

The mast can be adjusted with two Ergonomic handles make it easy to move up to Rotate 350 degrees

Stabilisatoren

Lifting eyes for easy movement





Lights

Lampen	4x 320 Watt LED
Lumen	179.200 lumen
Illuminated surface	5000 m ²

Engine

Model	Yanmar 2TNV70 Diesel
Speed	1500 rpm
Cooling	Water
Cylinders	2
Emission	Stage V

Fuel

Fuel	Diesel
Consumption	0,55 l/hour
Fuel tank capacity	110 liter
Autonomy	200 hour

Generator

Type	Linz Alumen
Output	3,5 Kva
Frequency	50 Hz
Voltage	230 Volt

Mast

Height	8,5 meter
Operation	Hydraulisch
Rotation	350°
Wind speed	110 km/h

Enclosure and trailer

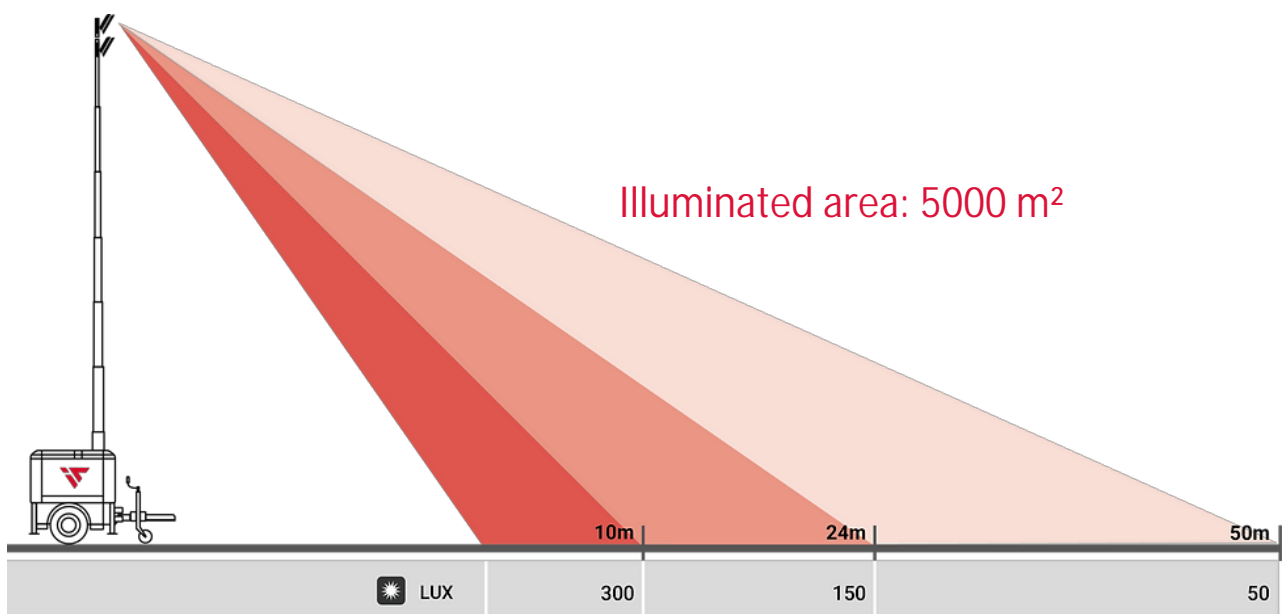
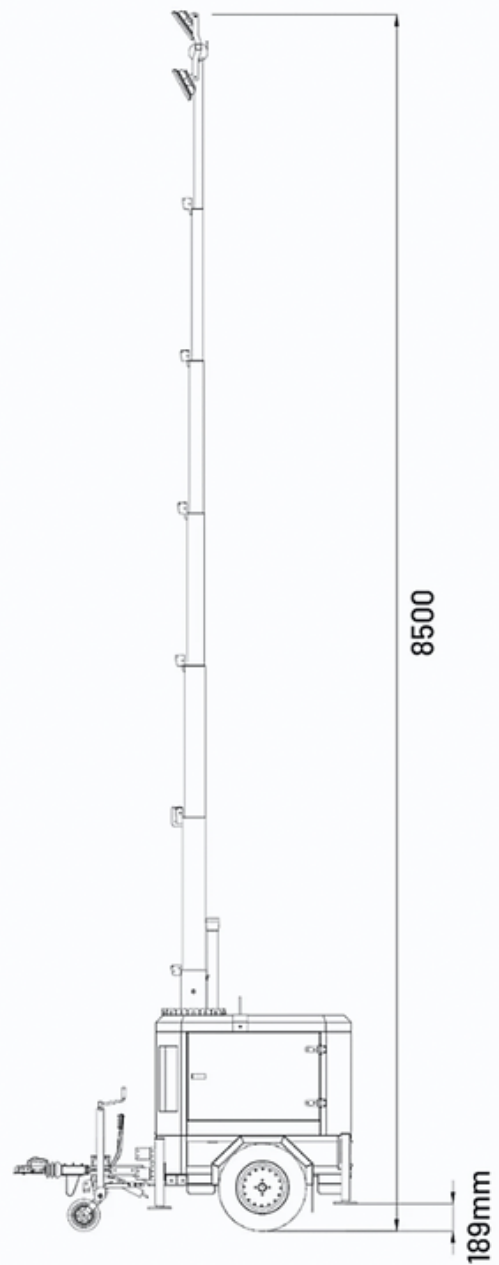
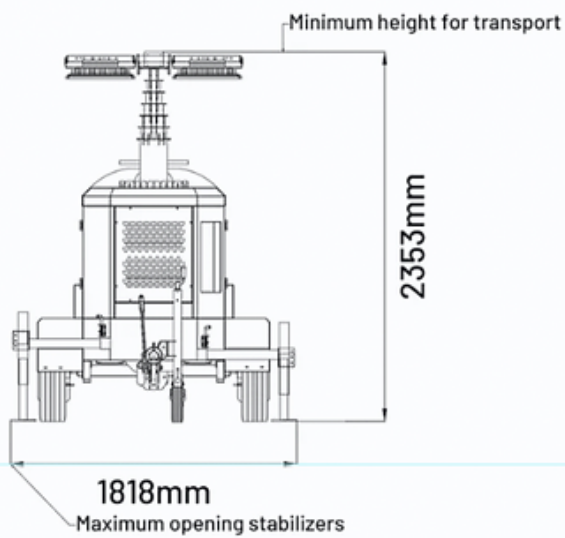
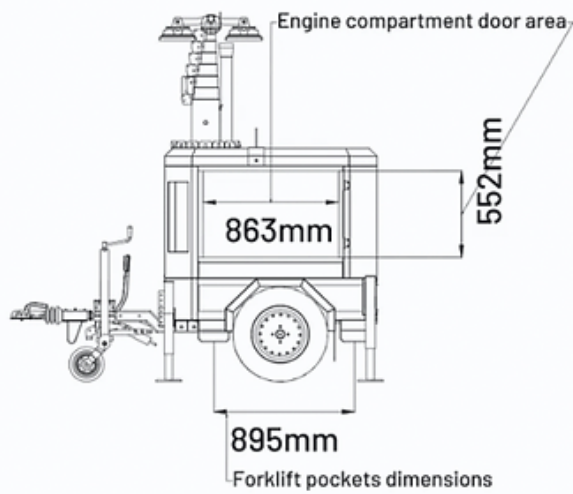
Trailer	Fast-trailer for public roads
Tyres	185/70/R13
Drip tray	Liquid tight 110%
Stabilizers	4 + 1 (tyre)
Conservation	Powder coated

Dimensions

Dimensions when retracted LxWxH	220 x 147 x 235 cm.
Dimensions extended LxWxH	220 x 182 x 8500 cm.

Other

Outlet	1,3 Kva/ 230 volt
Noise level	61 dB
Controller	DeepSea L401
Operating temperature	-30 / + 50° Celcius
Standard options	Amoss-kit Day/night sensor Mains/generator switch







ITALTOWER®

HEAVY DUTY LIGHTING TOWERS

**Italtower Benelux
1 Februariweg 1
4794 SM Heijningen
T: +31 (0) 180 418 113
E: info@diaber.com
W: www.diaber.nl**