



# ITALTOWER®

HEAVY DUTY LIGHTING TOWERS



## Astrid EVO

6x 160W LED | 8.5m



LOW EMISSIONS LIGHTING TOWERS

// **BROCHURE**  
LIGHTING TOWERS 2024

# Astrid EVO 6x160W LED | 8.5m

The Astrid Evo is one of Italtower's most popular mobile light towers. The mobile light pole is available in all types. The light pole is complete with an Amoss kit and DAY night sensor as standard. Thanks to the compact size, 11 light poles were installed on a trailer. The DSE controller controls the Yanmar engine and controls it continuously.



## Events

Long autonomy and a low noise level.



## Rental

Easy to use, long autonomy, low fuel consumption.



## Build

Durable, robust and developed for intensive use.



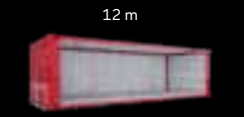
11x



13,5 m



11x



12 m

**Mast**  
Galvanized hydraulic mast

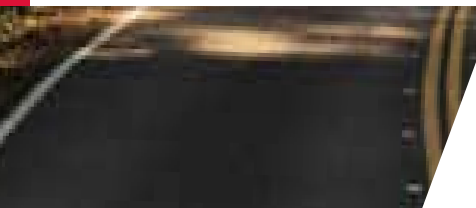
**Motor**  
Water cooled  
Yanmar-Motor

**Chassis**  
Compact chassis  
Amoss security system

**LED-lamps**  
Protection, lifespan 85,000 hours,  
robust aluminum housing

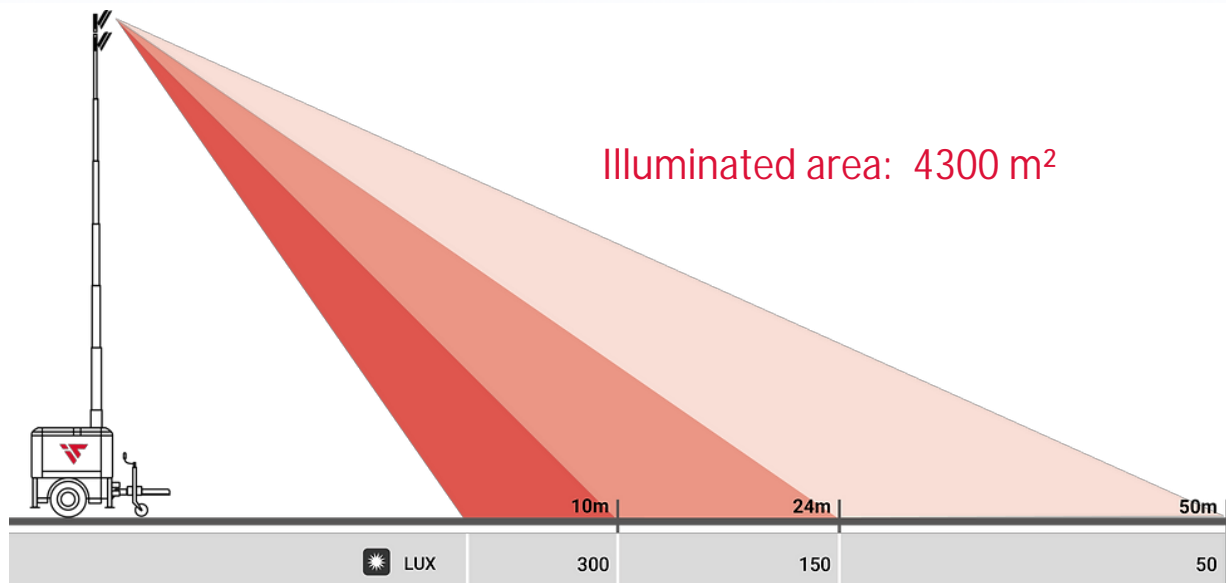
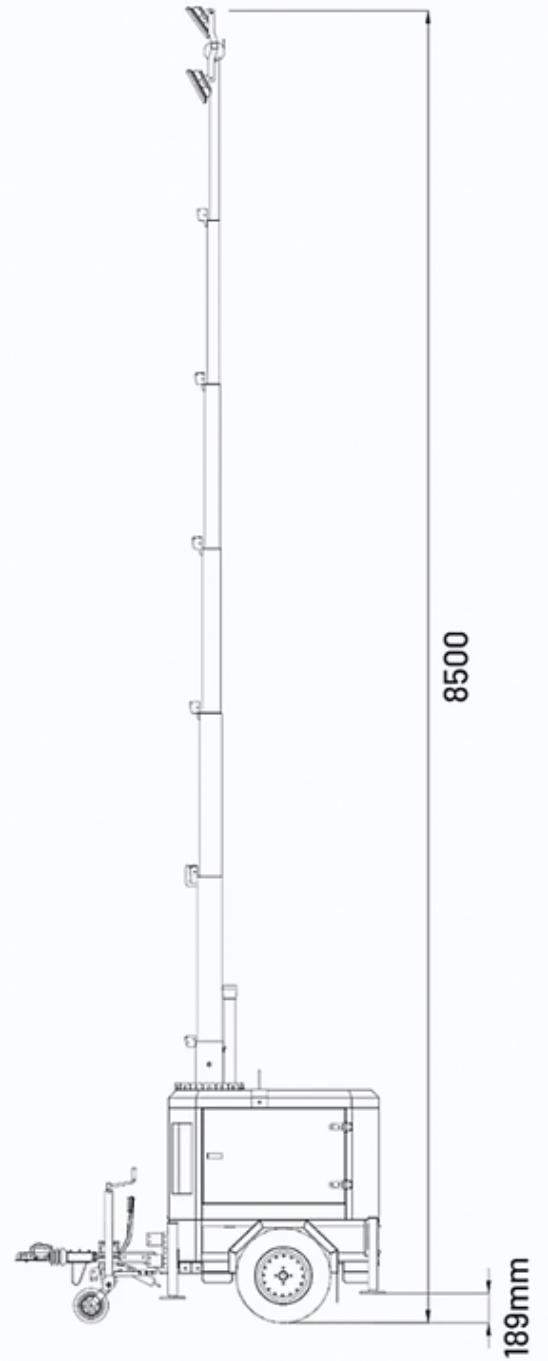
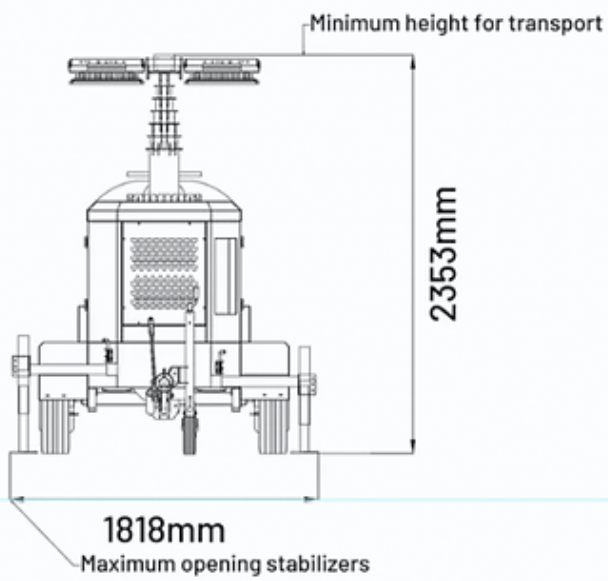
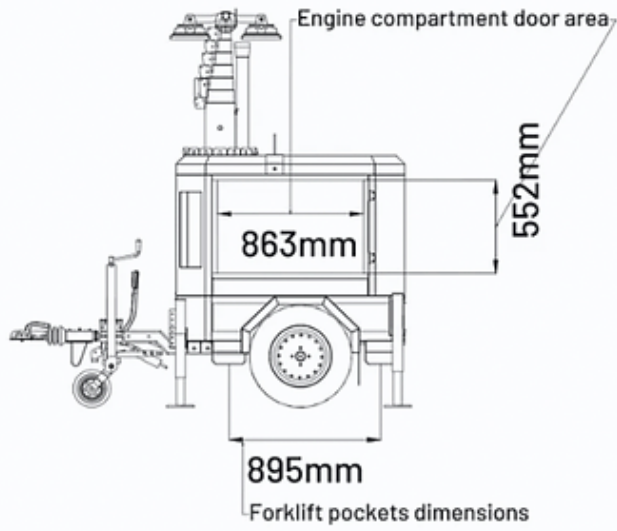
**Rotation**  
Ergonomic handles with  
360 degree rotation

**Stabilizers**  
4 high quality stabilizers





|                              |   |
|------------------------------|---|
| <b>Lights</b>                |   |
| Lamps                        | 6x 160 Watt LED   |
| Lumen                        | 131.520 lumen Illuminated                               |
| Surface                      | 4300 m <sup>2</sup>                                     |
| <b>Motor</b>                 |   |
| Model                        | Yanmar 2TNV70 Diesel                                    |
| Speed                        | 1500 rpm  |
| Cooling                      | Water   |
| Cylinders                    | 2   |
| Emission                     | Stage V   |
| <b>Fuel</b>                  |   |
| Fuel                         | Diesel  |
| Consumption                  | 0,55 l/hour   |
| Fuel tank capacity           | 110 liter   |
| Autonomy                     | 200 hour  |
| <b>Generator</b>             |   |
| Type                         | Linz Alumen   |
| Output                       | 3,5 Kva   |
| Frequency                    | 50 Hz   |
| Voltage                      | 230 Volt  |
| <b>Mast</b>                  |   |
| Height                       | 8,5 meter   |
| Control                      | Hydraulisch   |
| Rotation                     | 350°  |
| Wind speed                   | 110 km/h  |
| <b>Enclosure and trailer</b> |   |
| Trailer                      | Fast-trailer for public roads                           |
| Tyres                        | 185/70/R13  |
| Drip tray                    | Liquid-tight 110%                                       |
| Stabilizers                  | 4 + 1 (tyre)  |
| Conservation                 | Powder coated   |
| <b>Dimensions</b>            |   |
| Dimensions retracted LxWxH   | 220 x 147 x 235 cm.                                     |
| Dimensions extended LxWxH    | 220 x 182 x 8500 cm.                                    |
| <b>Other</b>                 |   |
| Outlet                       | 1,3 Kva/ 230 volt                                       |
| Noise level                  | 61 dB   |
| Controller                   | DeepSea L401  |
| Operating temperature        | -30 / + 50° Celcius                                     |
| Standard options             | Amoss-kit<br>Day/night sensor<br>Mains/generator switch |







**ITALTOWER®**

**HEAVY DUTY LIGHTING TOWERS**

**Italtower Benelux  
1 Februariweg 1  
4794 SM Heijningen  
T: +31 (0) 180 418 113  
E: [info@diaber.com](mailto:info@diaber.com)  
W: [www.diaber.nl](http://www.diaber.nl)**