

# Stichting Bouwen (The Gambia)

Coastal Road • Sanyang • The Gambia

tel.: +220 7564201 gambia@stichtingbouwen.nl www.stichtingbouwen.nl

Project:

**Lower Basic School**  
Aljamdu, The Gambia

Subject:

**Toilet building with 2 squat toilets**  
construction drawing

Client:

**FUN Foundation**  
Albatrospad 125, 1021 TR Amsterdam, The Netherlands

Projectnumber:

**2017-201**

Papernumber:

**WT02**

Scale:

**1:100**

Format:

**A4**

last date:

Draughtsman: **PSc**

Ch.G .....

Ch.C .....

Ch.F .....

Ch.B .....

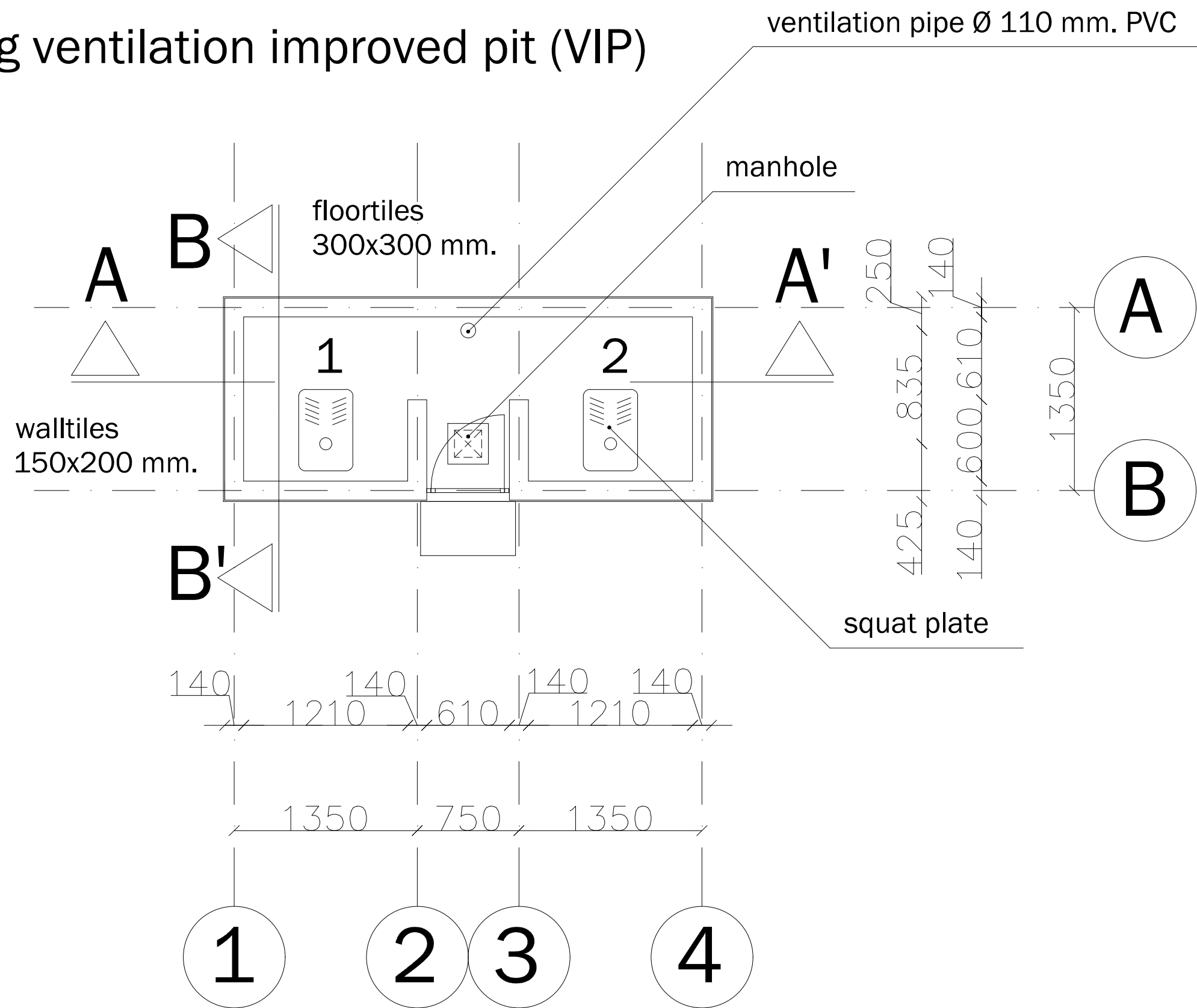
Ch.E .....

Ch.A .....

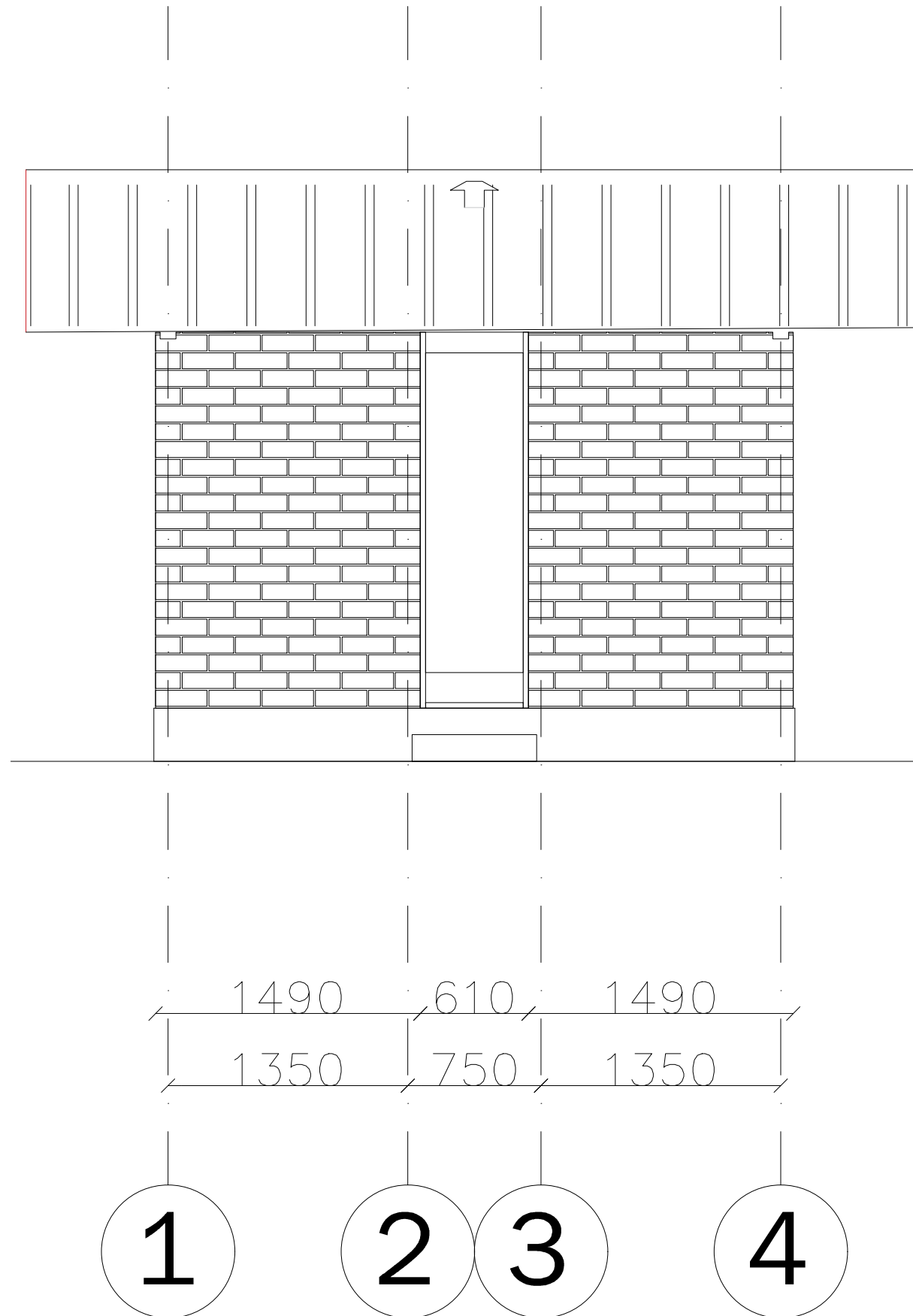
Ch.D .....

start 19-12-2018

# Fly trapping ventilation improved pit (VIP)



## FLOOR PLAN



Ventilation pipe Ø 110 mm.PVC with screen cover

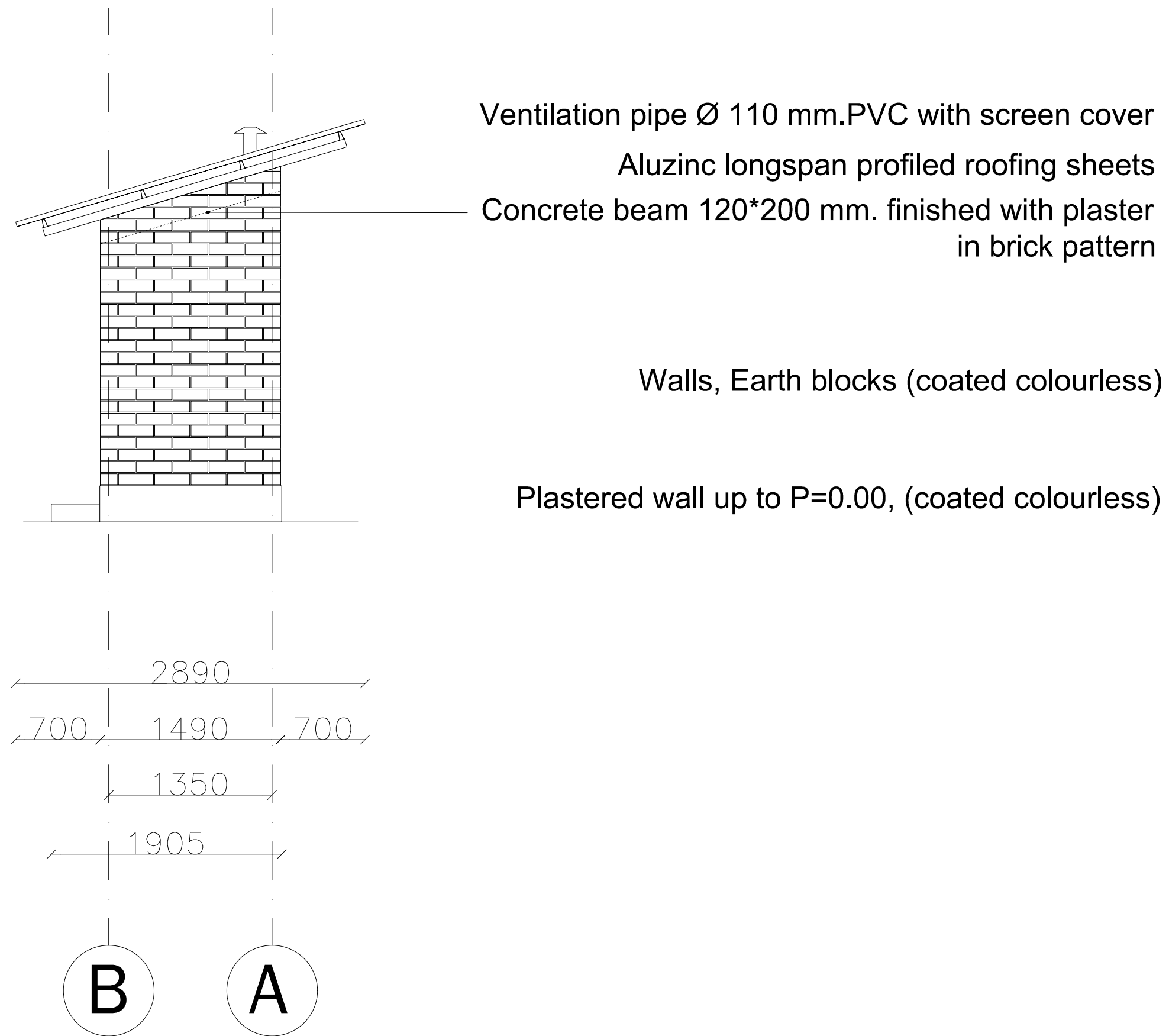
Aluzinc longspan profiled roofing sheets

Steel door; S/T 30x30x1,5 mm., steel plate 0,9 mm.

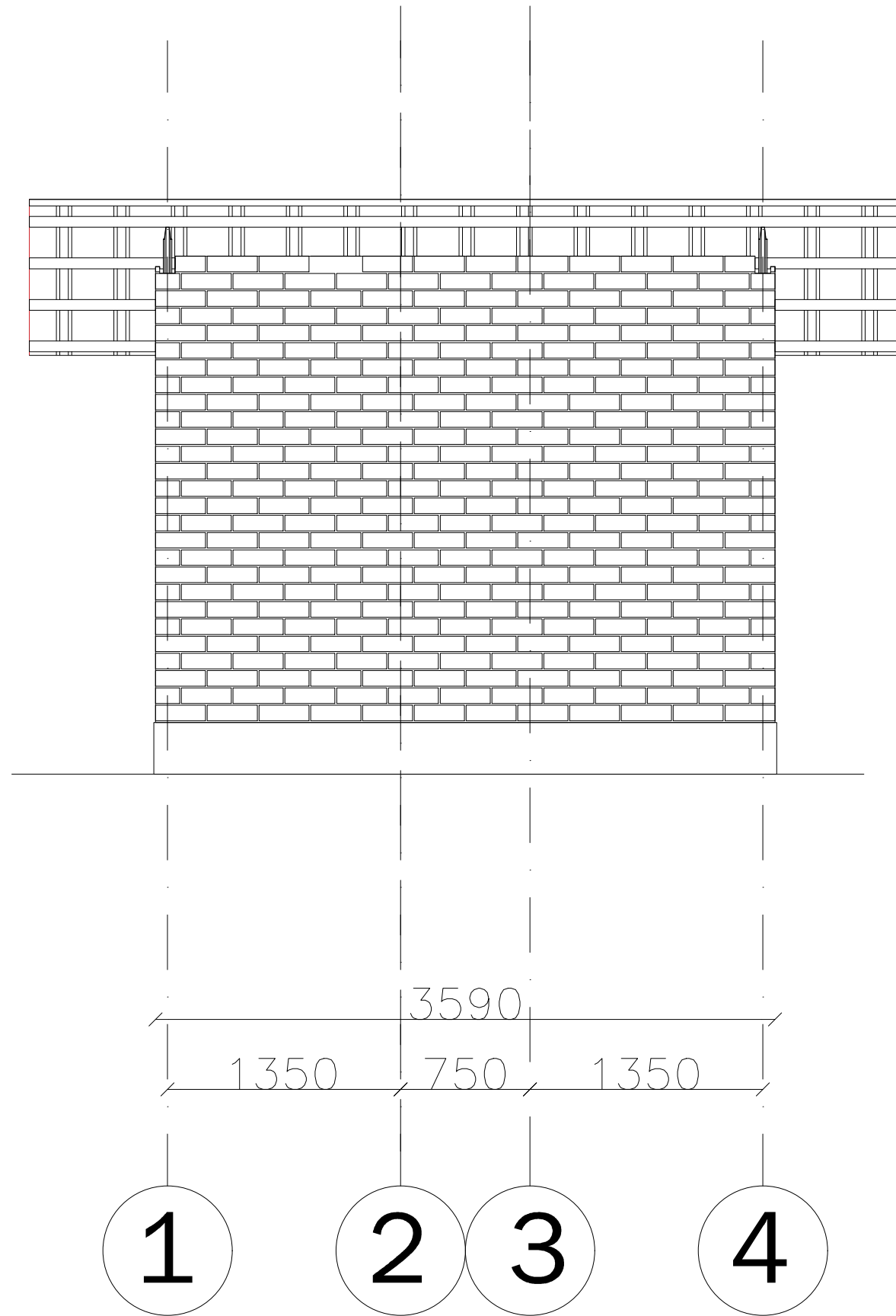
Walls, Earth blocks (coated colourless)

Plastered wall up to P=0.00, (coated colourless)

# FRONT ELEVATION



RIGHT ELEVATION



Ventilation pipe Ø 110 mm.PVC with screen cover

Aluzinc longspan profiled roofing sheets

Walls, Earth blocks (coated colourless)

Plastered wall up to P=0.00, (coated colourless)

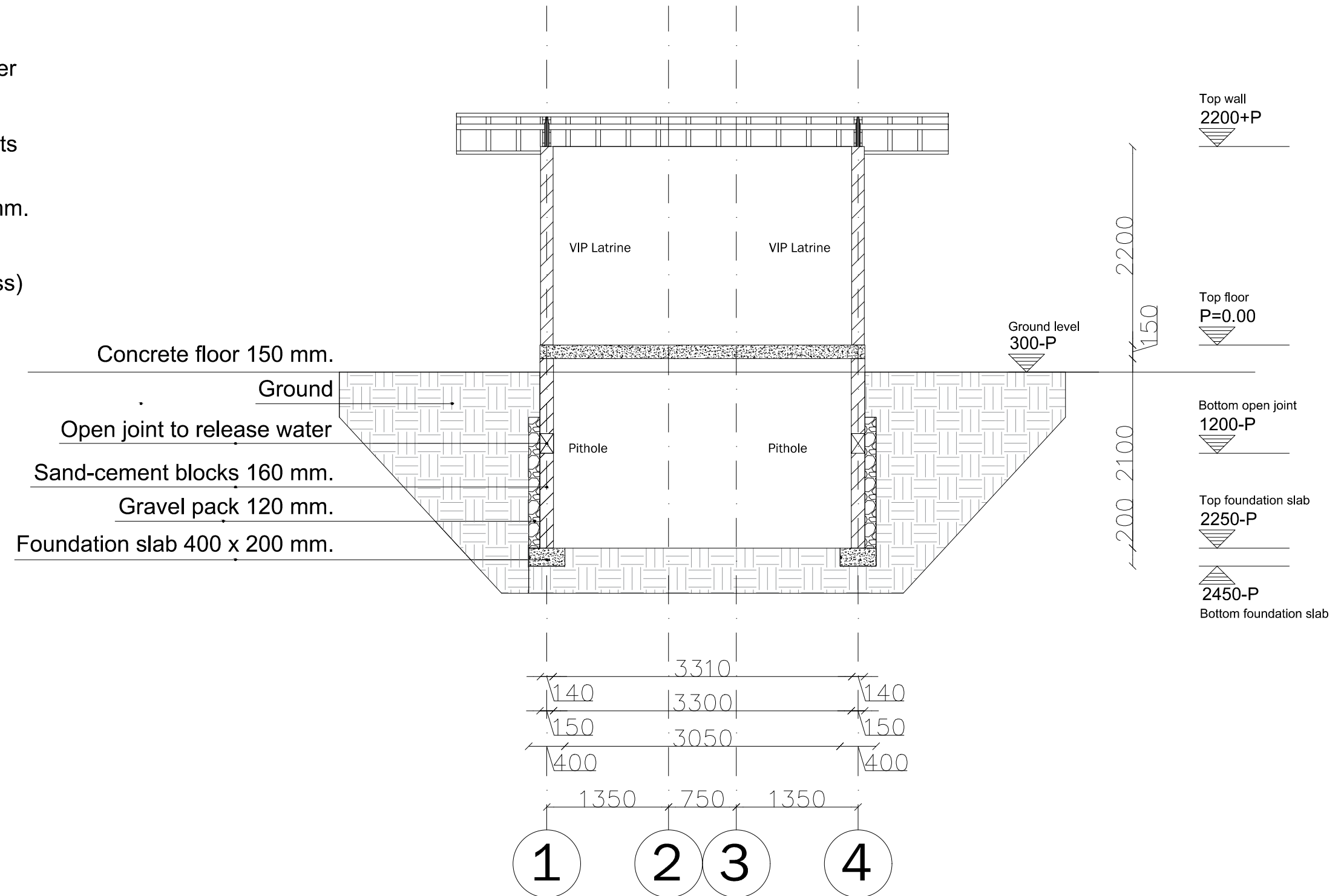
REAR ELEVATION

Ventilation pipe Ø 110 mm.PVC with screen cover

Aluzinc longspan profiled roofing sheets

Steel doors; S/T 30x30x1,5 mm., steel plate 0,9 mm.

Walls, Earth blocks (coated colourless)



SECTION A-A'

Ventilation pipe Ø 110 mm.PVC with screen cover

Aluzinc longspan profiled roofing sheets

Steel doors; S/T 30x30x1,5 mm., steel plate 0,9 mm.

Walls, Earth blocks (coated colourless)

Concrete floor 150 mm.

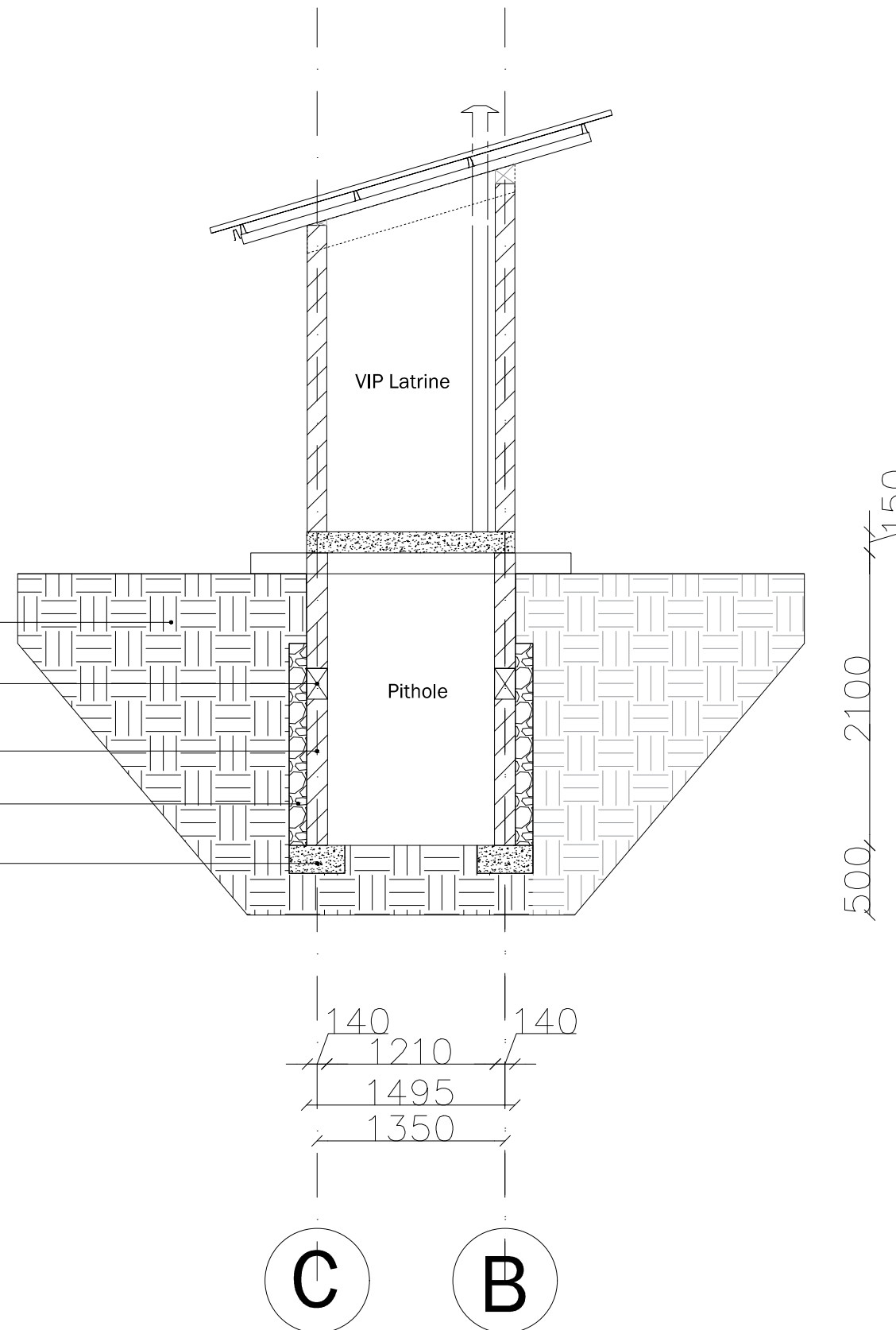
Ground

Open joint to release water

Sand-cement blocks 150 mm.

Gravel pack 125 mm.

Foundation slab 400 x 200 mm.



Top roof  
2918+P

Top wall  
2200+P

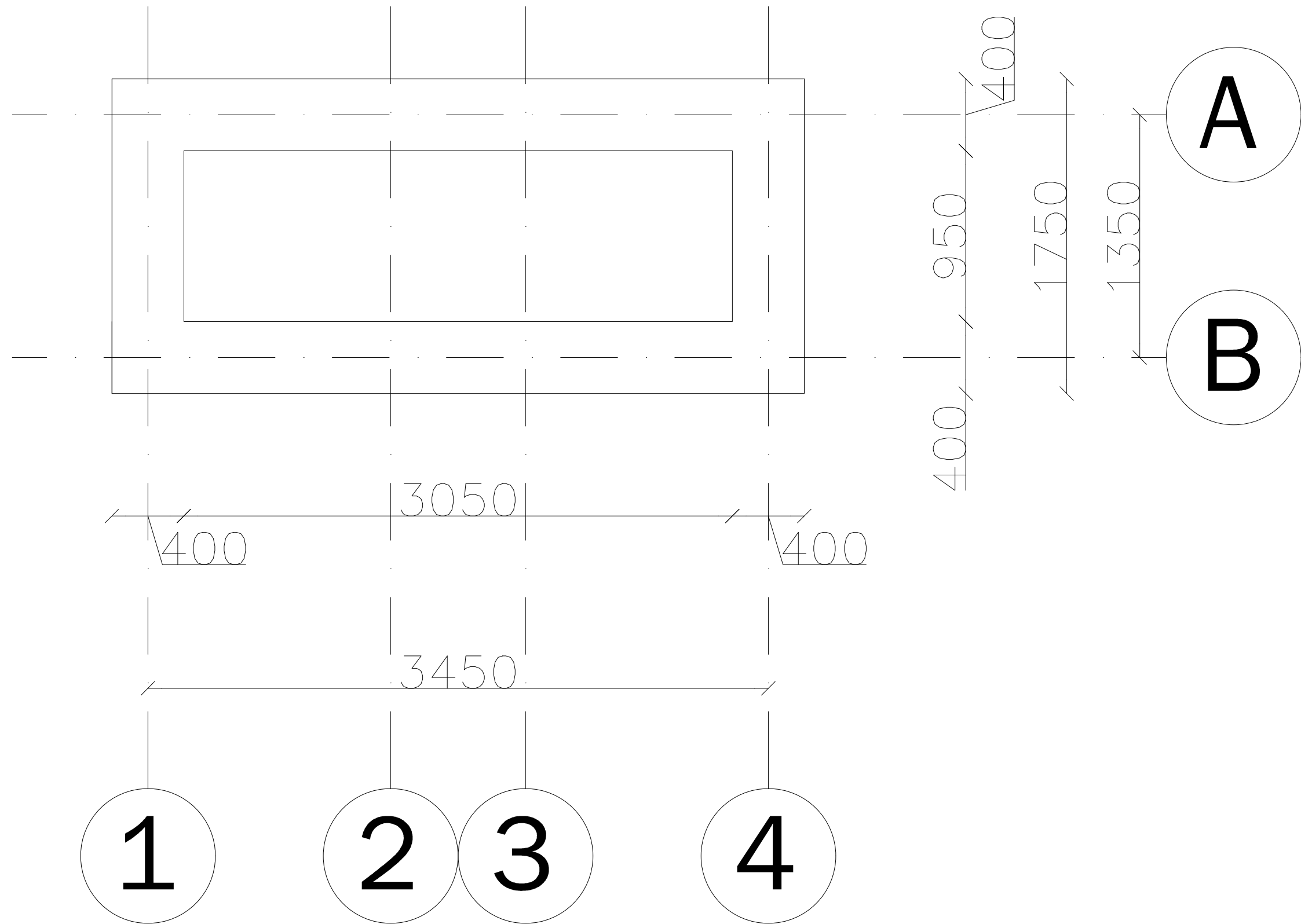
Top floor  
P=0.00

Bottom open joint  
1200-P

Top foundation slab  
2250-P

2450-P  
Bottom foundation slab

## SECTION B-B'



FOUNDATION PLAN



# SPECIFICATIONS:

Exterior walls:

Earth blocks, unplastered, sealed with colourless coating against water.

Interior walls:

Earth blocks, unplastered, walltiles up to 1200+P, rest: sealed with colourless coating.

Floors interior (P):

concrete 150mm, reinforced with BRC Ø 8 mm., c.t.c. 150 mm., porcelain floor tiles

Pit walls (2250-P to 150-P):

hollow sand-crete blocks, 160x400x200 mm.

Galvanised steel roof construction:

unfinished

steel doors:

2 coats of red oxide anti corrosion oil paint &

1 coat of gloss oil paint.

Aluzinc longspan profiled roofing sheets

0,4mm.