



BARBECUE



Gas cartridge stove GOURMET GRILL

- Piezo ignition & ignition fuse
- Non-stick coated and removable grill plate
- removable grease drip tray
- Stainless steel burner
- "Push & Turn" safety switch-on button
- Grease drain integrated in the grill plate
- Easy to clean
- Incl. Plastic carrying case

Dims. W 43 x D 29 x H 12cm, weight: app. 4 kg,
Power: 2.2 kW, consumption: 160 g/h,

Suitable for this: Valve cartridge - item no. 942000 (not incl. in scope of delivery)
706629 98,10

98,10

NEW
2024



Matching valve cartridge
Item no. 942000

GOURMET DOUBLE gas cartridge stove

- Two-burner hob 2x 2.2 kW
- Incl. Case for transportation and storage
- Ignition fuse
- Piezo ignition

The 2 burners of cartridge gas stove can be operated independently of each other, as each uses a separate gas cartridge. The stove is supplied in a case (dims. 690x325x130mm).

Tech. specifications: Number of burners: 2, Power: 2x 2.2 kW, Ignition: Piezo, Ignition safety device: Yes, Depth: 68 cm, Width: 28 cm, Height: 12 cm, Weight: 5.4 kg, Color: Stainless steel, Material: Stainless steel. Matching valve cartridge art. no. 942000 (not included)

70677

119,-

NEW
2024

Incl. Carrying case



119,-

Valve cartridge art.
no. 942000
suitable for all products on this page



GOURMET gas cartridge stove

- With ignition fuse
- Power 2.2 kW
- Stainless steel surface
- Incl. Plastic carrying case

L343 x W 280 x H 118 mm, power: 2.2 kW. With piezo ignition and ignition fuse.
The maximum diameter of the pan to be used is 340 mm. Weight: app. 1.77 kg. Matching valve cartridge art. no. 942000 (not incl.)

70676

46,90

46,90



Incl. Carrying case



DeWok cooking set.....	274
Charcoal grills.....	274 – 277
Gas grill/accessories/multifunction grills.....	277 – 283
Electric grills.....	283

Accessories/gas grill/cartridge stove.....	284 – 292
Gas cooker/spirit stove/toaster/accessories.....	290 – 296
Gas ovens/accessories.....	297

DEWOK COOKING SET & FOLDABLE/PLUGGABLE CHARCOAL GRILLS MADE OF STAINLESS STEEL



DeWok Cooking set - individual cooking pleasure for up to 4 people



- Enjoy Indoor & Outdoor
- Gentle & versatile preparation - from Asian to Mediterranean to home cooking
- Flexible useflexible use - at home, camping, in the garden or on the road, alone, as a couple or with friends
- Hood materials such as natural stone, stainless steel and real wood
- Enjoyable togetherness - no matter when and no matter where

- ① DeWok set for 2 people, dims. (LxWxH): 180 x 180 x 135 mm, pan: Ø 150 mm, weight: 3.8 kg. **70671 109,-**
- ② DeWok set for 4 people, Dims. (LxWxH): 400 x 180 x 135 mm, pan: Ø 150 mm, weight: 7.5 kg. **70672 164,-**
- ③ DeWok storage ring, black, for placing the (hot) pan. Is fixed to bracket. Weight: 400 g. **706722 43,60**
- ④ DeWok burning gel 1 liter **706721 10,90**
- ⑤ DeWok cooking lid, black, suitable for DeWok pan (Ø 150 mm). Weight: 500 g. **706723 43,60**
- ⑥ DeWok Windstop, black, Wind protection for fuel gel container. Weight: 150 g. **706724 30,60**



Luxury grills for 4 wheel drive vehicles & campers



- Very small pack size
- Grill body made of 1.5 mm thick stainless steel
- Grill grate made of 3 mm thick stainless steel
- Easy to clean and dishwasher safe
- Made in Germany

Ideal for backpackers or motorcycle tourists. Easy to transport - Set up and ready for use in just a few steps and just as quickly folded or taken apart again to save space. Optimum preparation of grilled food thanks to the triple height-adjustable grill grid or by inserting up to three grill skewers. Long burning time due to large coal container with ventilation plate. All parts can be easily cleaned with standard household cleaners and, if necessary, with a high-pressure cleaner. The grill grates are also dishwasher safe.

- ① Grill small, for 2 to 4 people, dimensions: W x D x H 250 x 250 x 220 mm
Foldable: Packing size: 470 x 280 x 25 mm **91667 104,-**
- ② Grill medium, for 2 to 4 people, dims.: W x D x H 250 x 300 x 220 mm
Foldable: Packing size: 530 x 280 x 25 mm **916671 114,-**
- ③ Grill large, for 4 to 8 people, dimensions: W x D x H 400 x 250 x 220 mm
Foldable: Packing size: 650 x 280 x 25 mm **916672 141,-**

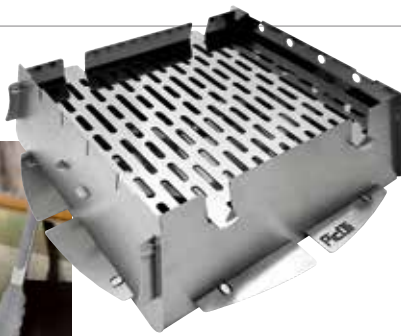


Fireplace 250

- Fireplace made of VA - stainless steel
- Also suitable for cooking
- Very stable and heat resistant
- Folds extremely flat
- Space saving storage



Fireplace 250, 25 x 20 x 36 cm **916702 153,-**



Incl. Transport bag

PicOli - Plug-in grill attachment for gas stove

- All parts made of high-quality, dishwasher-safe stainless steel
- Ready for use in no time with the quick plug-in system
- Grill surface: approx. 18x20 cm
- Low gas consumption
- Durable, sustainable
- 100% Made in Germany



Whether grilling with charcoal, over an open flame at the campfire or on the gas stove - the all-rounder is the ideal all-round grill when camping, hiking or on bike tours. Pack size: approx. 1.5 x 29 x 29 cm. Delivery incl. transport bag made of robust truck tarpaulin. Weight: 1.3 kg.

914020 163,-



① Gizzo completeGrill set

Get started straight away w/ Gizzo complete set. Consisting of charcoal folding barbecue, 2 side tables, 8x easy-to-clean foil trays, barbecue gloves, eco-lighter cubes, carrying bag. Grill surface: 45 x 29, working height: 58 cm. Dimensions erected (LxWxH): 47 x 31 x 55 cm, dimensions folded (LxWxH): 45 x 31 x 4 cm Weight: 11.8 kg.

916010 130,-

② 4 Skewers, stainless steel with sliding handle. Length 45 cm.

916011 14,20

③ 5-piece Barbecue cutlery w/ wooden handle

Made of high-strength stainless steel. Scope of delivery: tongs, spatula, knife, grill fork, silicone brush, carrying bag.

916012 26,20

④ 2x Grill grid + Grill pan w/ removable handle

Made of stainless steel. For perfect grilling results.

916013 38,10



Meet Una - Lets Grill

- Compact Brushed stainless steel grill with elegant leather handle
- Outstanding grilling performance with intelligent air routing
- Easy to use and clean
- Space saving storage

The stylish portable charcoal grill for on the go. The cover also serves as a secure base for the grill. Two heights above the charcoal and recesses for standard skewers provide ultimate user comfort. The stainless steel parts are dishwasher safe. Dimensions: W 16 x L 43 x H 9 cm, weight: approx. 3.7 kg

Grey 916861 108,-
Turquoise 916862 108,-



Charcoal storage miracle

- Can be folded very flat & stowed away to save space
- Made of high quality steel or stainless steel

① charcoal grill made of steel, matt black

grill surface of 42 x 27 cm, working height: 36 cm. W 44 x D 28,5 x H 36 cm, packing size: app. W 44 x H 42 x D 3 cm, weight: 2,5 kg

916892 43,60

② Tom charcoal grill stainless steel

grilling surface of 48 x 30 cm, working height: 37 cm. W 47 x D 28 x H 37 cm, Pack size: app. W 51 x H 48 x D 4 cm, Weight: 3.5 kg

916890 65,40

TABLE AND DISPOSABLE GRILLS / ACCESSORIES



With Feuerdesign® Charcoal table grills juicy grilled meat all year round

- Rechargeable fan with USB, removable & eco-friendly
- Adjustable temperature and up to 4 hours of grilling time.
- Flat design for easy handling when grilling at the table
- Charcoal basket with lid for a smoke-free, healthy barbecue
- Stainless steel railing - prevents food from falling off the grill
- Grill grate and grease drip tray made of stainless steel, easy to clean
- Double-walled design allows to touch and transport the grill while grilling
- Practical carrying bag
- **FREE OF CHARGE:** Fire design stainless steel/silicone barbecue tongs

Smoke-free and healthy grilling pleasure on the spiral-shaped grill grate. The grill grate is easy to attach via the Quick-Lock system with 2 buckles. It is covered with a separate lid and protects the coal from dripping fat. The practical combustion chamber system results in effective combustion without great smoke development. The housing and base are made of powder-coated steel with integrated base for a secure stand.

Scope of delivery - A complete fire design® Grill Stainless steel grill grate, fire basket with lid, grease drip tray and housing with bottom made of powder-coated steel. 1 fan motor incl. 1000 mAh battery, 1 USB charging cable. Convenient carrying case and multilingual instruction manual.

Optional accessories



- ③ **Charcoal**
Smokeless charcoal in 2 kg bag
916768 119,-
- ④ **Burning gel**
Contents 500 ml 916769 141,-

Vesuvio - Charcoal table grill

Stainless steel grill grate with Ø 33 cm provides space for grilling food for 3 to 4 people. Flat design with only 18.5 cm for easy handling.
Weight: 3,5 kg

① Vesuvio Anthracite 91675 119,-

Teide - charcoal table grill

The square shape with 34 x 34 cm allows optimal use of the grill surface, 21 cm high, weight 5 kg.

Anthracite 91676 141,-



Lars smoker - smoking like a pro

Smoke fish, meat, vegetables and more. Incl. Lid and container for cleaned fuel paste for smoldering the wood chips. Dimensions: W44xD3xH15 cm. Pack size: app. 44x13x15 cm. Weight: 2,75 kg

916898 22,90

Electric arc Stick lighter - inolight CL3

- No fossil fuels necessary - neither gas nor gasoline
- High heat development without flame
- Insensitive to wind and moisture
- High-quality feel, noble design, completely made of metal
- With integrated 3.7V battery (under 3h charging time for up to 100 ignitions, app. 500 x rechargeable)
- Simple operation, integrated overload protection (automatic ignition stop after 10 sec.)



Scope of delivery: Stick lighter, USB charging cable, instruction manual. 914043 27,20



CASUS-GRILL - sustainable disposable grill

- Uenviromentally friendly
- Natural materials: Bamboo, cardboard, coal and lava rock
- Quick Oxylite bamboo charcoal briquettes - ready to grill in 5 min., Grilling time app. 60 min.
- environmentally friendly and biodegradable
- Thermal insulation reduces external temp. of grill

Dims.: W 31 x D 25 x H 14.8 cm, weight: 1 kg 916000 13,10



CASUS Bamboo charcoal briquettes

- Ready within 5-8 minutes
- 180 minutes above 180 °C
- Practical lightweight bag
- Disposable use
- Sustainable

Bamboo charcoal briquettes in a practical and handy 1 kg package, just right for a meal. Ready to put on the grill after only 5-8 minutes. Content: 1 kg

916006 6,55



65,40

Holiday Travel - Charcoal suitcase grill

- Fold out feet
- Set up in a few seconds
- Space-saving stowed in stainless steel case

Shapely and functional - the folding grill from Holiday Travel. Simply open the case, remove and insert the charcoal container with grate and the barbecue is ready to use. The grate can be folded to the side for filling with charcoal. Grilling surface app. 33 x 20 cm. Pack size: approx. 37 x 24 x 8 cm. Material: Stainless steel, weight: 2.5 kg. **916881 65,40**



109,-

Holiday Travel - Stainless steel suitcase gas grill

- Fold-out feet for a stable stand
- Handy and lightweight
- Folds into a space-saving case
- Quickly ready for use
- Cartridge operated
- With piezoelectric ignition
- Power: 3.3 kW

Grill surface app. 32.5 x 23 cm, length of gas hose app. 40 cm Dims. when open: L 40 x W 23/34.5 x H 31.5 cm. Pack size: 40 x 10.5 x 24 cm. Weight: approx. 3.6 kg.

Pfitting Gas cartridge: Art.-No. 942001

916882 109,-



38,70

Scout - Swivel grill

- Western style barbecue
- Adjustable grill height
- Extra small pack size

Stainless steel swivel grill, Ember tray included. Grill surface: Ø approx. 55 cm, height: approx. 165 cm, Pack size: 55.5 x 13 x 55.5 cm Weight incl. packing: 5 kg **916895 38,70**



30,50

Jim - The compact charcoal grill

- Retractable feet hold the lid securely in place and thus serve as a transport lock
- 2 ventilation slots in the lid for optimum grilling results

Made of sturdy steel including lid and 2 carrying handles. Dims.: W 48 x D 27 x H 27 cm, pack size: app. 48 x 30 x 20 cm, weight: 2.6 kg **Color: Black 916901 30,50**

Table and stand gas grill for family and friends



- Suitable for 4-6 people
- High power 4.0 kW
- Temperature control knob and ignition fuse
- Double-walled
- With gas cylinder connection for butane, propane or LPG gas mixtures
- Lid can be hooked in
- Suitable for Ø 30 cm pizzas
- for at home & on the go
- in elegant matt black

from **228,-**

① Stand gas grill Family

Sturdy free-standing grill with 3 metal legs and plastic feet. Without legs can also be used as a table grill. Scope of delivery: grill with lid and handle, temperature indicator, stainless steel grill plate, pot plate and carrying bag. Dimensions: Ø 47 x H 67/98 cm. Weight: approx 12 kg

Family 30 mbar*	914653	228,-
Family 50 mbar	914654	228,-

② Table gas grill Family Table

Double walled with plastic feet. Scope of delivery: grill w/ lid & handle, temp. indicator, stainless steel grill plate, pot plate, carrying bag. Dimensions: Ø 47 x H 43 cm. Weight: approx 10 kg

Family Table 30 mbar*	914651	217,-
Family Table 50 mbar	914652	217,-

Optional accessories:

③ pizza stone	914655	11,90
④ Aluminum grill plate	914656	28,30

Stainless steel grill plate included

Lid can be hooked on the grill

incl. practical carrying bag

Thermometer in lid

Gas hose and regulator not included.



109,-



WOKI - 4 in 1 comfort cooking & grilling station

- Multifunctional grill station for baking, roasting, wok cooking & grilling
- Power 3.5 kW
- Piezo single ignition
- Mounting without tools

Unlimited cooking pleasure with the mobile cooking and grilling station "Woki". Uncomplicated assembly without tools. Legs, burner unit and grill attachments simply slot into each other. Stable and safe stand due to connecting grid.

Power: 3.5 kW, with gas cylinder connection for butane, propane or LPG gas mixtures. Piezo single ignition. Weight: 10.5 kg.

Scope of delivery: grill station, burner, grill grate Ø 38 cm, reversible plate (grill plate or warming plate Ø 35 cm), wok pan Ø 43.5 cm, lid w/ thermometer and ventilation holes, transport bags w/ carrying handles (bag: Ø 46 x 6 cm, rucksack: 42 x 42 x 23 cm Material: 100 % polyester)

Woki 30 mbar *	914613	109,-
Woki 50 mbar (for DE, AT, CH)	91461	109,-



INVERTING PLATE



STEP CONTROLLER



THERMOMETER

Gas hose and regulator not included.

Can also be used as table grill w/ separate base frame



Grill surface app. 51 x 22 cm



Trolley 2 - burner gas barbecue

- Large wheels & handle for easy transportation
- Easy to transport
- Power: 3 kW (2 individually controllable burners w/ 1.5 kW power each)
- Electric ignition (Batteries not included in scope of delivery)
- Gas consumption: 214-218 g/h
- With thermometer in the lid
- With ignition fuse
- 2 grill plates, 2 side pull-out shelves and 1 mesh bag

The trolley gas grill with the extra-high removable lid with folding handle and thermometer provides an optimum grilling experience for a wide variety of dishes. 2 cast-iron grill grates are included and can be exchanged for the optional pot grid. The 2 pull-out shelves on the side can be used for barbecue food, spices and barbecue utensils, for example. Incl. Grease drip tray & 2 hooks for e.g. barbecue utensils. Material: stainless steel, cast iron, aluminum. Dims. when set up: W 57/96 x D 40 x H 60/89 cm, pack size app. 86 x 34cm, power: 3 kW. Weight: approx. 11 kg. Gas hose & gas pressure regulator not included.



from 295,-



① 30 mbar*	916883	295,-
50 mbar	916884	295,-
② Table frame	916885	38,10
③ Pot grid, 1 pc.	916886	14,20

NEW 2024



Can also be used as a stove with pot grid

① Malibu - Tabletop gas barbecue

- 2 shelves à W 24 x D 25 cm
- Power: 3.6kW
- Automatic piezo ignition
- Grill surface W 43 x D 30 cm
- Grease collector pots



Optionally w/ base frame for use as a free-standing grill, w/ Piezo ignition, 3.6 kW. Gas consumption: 257 g/h, dimensions open: W 105 x D 62 x H 50 cm, Pack size: app. 66 x 48 x 25cm, Weight: app. 9kg

30 mbar*	914574	130,-
50 mbar	914575	130,-

② Barbecue base Malibu

The ingenious working height is height-adjustable in 2 stages, 69 cm or 78 cm. Can be used as a barbecue transport trolley when folded up, while frame remains on barbecue. Weight: approx. 2.5kg

914576	38,10
--------	-------



130,-



Campingaz 360° table grill

- Chic, pre-assembled Cartridge stove in a stylish design
- 360° ring burner for even heat distribution
- Ready for use in only 8 minutes
- Intuitive operation (Push N Turn ignition)
- Power 2.4 kW
- Durable, reversible aluminum grill plate with non-stick coating
- Dishwasher safe fire bowl

Gas consumption 175g/h. Burn time approx. 2h 30min when using a CV 470 gas cartridge. Material: lid: polypropylene, burner: die-cast aluminum and enameled steel. Scope of delivery: 360° grill, gas hose, gas regulator, table holder for gas cartridge & transport bag.

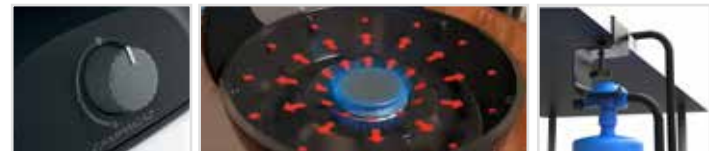
Dimensions: 35 x 35 x 16 cm, weight: 5.1 kg

① 360 Grill CV Black	960210	163,-
② 360 Grill CV Copper	960211	163,-

③ Suitable Gas cartridge: Campingaz CV 470.		
Content: 450g	91411	15,20
	GP* 30,89/1kg	



Danger H220





DEVIL BBQRUISER HT free-standing gas barbecue

- Power: 4 kW
- Integrated thermometer in the lid
- Versatile in use
- Innovative design

The Devil BBQruiser HT is the ultimate portable gas outdoor grill for campers on the go! With its high-quality materials and innovative design features, this barbecue is your ticket to sizzling, succulent meals outdoors. It is compact and lightweight, easy to pack and transport, and its powerful burners ensure that your food is always deliciously cooked. Available in 2 versions. Dimensions 62 x 59 x 99.6 cm. Weight 9.9 kg.

30 mbar*	706106	294,-
50 mbar	706107	294,-



①



① DEVIL BBQRUISER LT tabletop gas barbecue

- Power: 4 kW
- Integrated thermometer
- Versatile in use
- Innovative design

The Devil BBQruiser LT is the tabletop version of the HT model. Construction and grill properties remain unchanged. Dimensions 47 x 43 cm. Weight 7 kg.

30 mbar*	706103	261,-
50 mbar	706104	261,-

② BBQRUISER LEG KIT

- Turns a tabletop grill into a free-standing grill
- Support leg kit with shelf to convert the BBQruiser LT into a free-standing barbecue.

706105	39,20
---------------	--------------

②





Party Grill 400 Caravan connect

- Safe and easy connection to the gas connection
- Grease collection system for easy cleaning
- Push & turn ignition for convenient lighting
- Fully adjustable power

Operation with R904, R907, butane or propane gas cylinder.
 Power: 2kW. Gas consumption: 145 g/h. Burning time: 19.5 hours with R907; 12.5 hours with R904. Boiling time for 1 liter of water 6 min. & 5 sec. Ignition: Piezo in the control button. Size: diameter 36*42cm (with legs). Weight: 4,92 kg
 Scope of delivery: lid with wok function, pot cross, reversible grill & contact grill plate, grill grid, polyester carrying bag, incl. hose with connector.

30 mbar* 914462 159,-

Multifunction grills with versatile application

- Versatile due to multifunctional equipment
- Grease collection system for easy cleaning
- Push & turn ignition for convenient lighting
- Fully adjustable power
- Non-stick grill plate
- Piezo ignition for quick grilling

① Party Grill™ 200 CV, for operation w/ gas cartridge (CV 300 Plus / CV 470 Plus)

Power: 2 kW, gas consumption: 145 g/h, boiling time: for 1 L water in 4 min. and 18 seconds, weight: 2.84 kg, dimensions: Ø 32 x 33 cm. Scope of delivery: transport lid, pot cross, grill grate. 914456 115,-

Party Grill™ 400 w/ wok function Power: 2 kW, gas consumption: 145 g/h. Scope of delivery: Lid with wok function, pan cross, reversible grill & contact grill plate, grill grid, gas hose, polyester carrying bag. Weight: 4.92 kg, dimensions: Ø 36 x 42 cm.

③ For operation w/ Campinggaz gas cartridge (CV 300 Plus / CV 470 Plus), Boiling time: for 1 L of water in 4 min. & 18 sec. Weight: 2.8kg, dims.: Ø32 x 33cm (w/ legs), scope of delivery: pot cross, grill grate & transport lid 914460 159,-

② 50 mbar (for DE, AT), for operation with gas bottle, boiling time: for 1 L water in 6 min. and 5 seconds. 914454 159,-

④ Party Grill™ 600 R, for operation with gas bottle Power: 4 kW, gas consumption: 290 g/h, boiling time: for 1 L water in 3 min. and 50 seconds, weight: 10.72 kg, dimensions: Ø 52 x 99 cm. Scope of delivery: lid, pot cross, reversible grill and contact grill plate, grill grid, polyester carrying bag, incl. hose 914452 239,-

50 mbar (for DE, AT)



You can find suitable gas cartridges on pg. 294



Grillo Chef 40 BBQ/Chef Pan

- All-rounder for cooking & grilling
- Stainless steel burner w/ variable heat setting (up to 3 kW)
- Piezo ignition
- Assemble without tools
- Aluminum legs unscrewable

The base is easy to (dis)assemble and the Grillo Chef can be easily stored and carried in the included carrying storage bag. The Grillo Chef has automatic piezo ignition and the grill grate has the CADAC GreenGrill coating; a durable and environmentally friendly ceramic coating that is easy to clean. With the pot stand, the model can also be used as a stove.

Grill grate Ø 38 cm, ceramic coated grill surface. Grease drip tray included.

- ① **Grillo Chef 40 BBQ:** Power: 3 kW, incl. 1 x grill rack, 1 x pot stand & carrying bag. Dimensions L x W x H: 65.4 x 65.4 x 71 cm, pack size: 42.2 x 15 x 57.3 cm, weight: 7.8 kg.
50 mbar (for DE, AT) **915260** **153,-**
- ② **Grillo Chef 40 BBQ/Dome:** Power: 3 kW, incl. 1 x lid, 1 x grill rack, 1 x pot stand and carrying bag. Dimensions L x W x H: 65.4 x 65.4 x 88.5 cm, Pack size: 42.2 x 15 x 57.3 cm, Weight: 8.3 kg
50 mbar (for DE, AT) **915265** **207,-**
- ③ **Grillo Chef 40 BBQ / Chef Pan:** Power: up to 2.5 kW, with lid, Chef Pan, grill rack, pot stand and carrying bag. Dimensions L x W x H: 65.4 x 65.4 x 88.5 cm, Pack size: 42.2 x 15 x 57.3 cm, Weight: 9.3 kg
50 mbar (for DE, AT) **925210** **239,-**



Carri Chef 50 Grill Series

- Easy to assemble and store
- Ø 13.2 cm large burner with variable heat output
- Power: 3.7 kW
- Easy-to-clean ceramic-coated GreenGrill aluminum grill surfaces, grilling surface approx. Ø 45 cm
- Pot stand and carrying bag included

The Carri Chef 50 models are easy to set up, easy to stow away and convenient to transport thanks to the practical carry bag. The lightweight aluminum legs are screwed on or off via screw connection. The shelf between the legs provides a convenient storage area for spices, for example. The large stainless steel burner (Ø 13.2 cm) with piezo ignition for safe ignition offers variable heat output up to 3.7 kW. The ceramic-coated aluminum grill surfaces and porcelain-enameled grease pan are easy to clean. Supplied without regulator and hose. Dimensions: approx. W 70 x L 70 x H 94 cm. Pack size: approx. 33 x 56 x 57 cm

- ① **Carri Chef 50 BBQ/Plancha**
 Scope of delivery: grill including 1 x pot stand, 1 x BBQ/plancha plate (half grill grate, half smooth plate) and 1 x lid. Weight: approx. 11.7 kg.
50 mbar (for DE, AT) **915216** **326,-**
- ② **Carri Chef 50 BBQ/Grill 2 Braai Combo**
 Scope of delivery: grill including 1 x pot stand, 1 x Grill2Braai plate (half ribbed, half smooth), 1 x grill grate and lid. Weight: approx. 12.7 kg.
50 mbar (for DE, AT) **915206** **403,-**
- ③ **Leg adapter, height-adjustable**
 Easy leveling / for stable, safe grilling / suitable for Carri Chef 50
914440 **13,10**



Order at the same time:

- ④ **Grill cover**
- All covers are designed for all grills of Ø 47 cm and Ø 57 cm grilling surface.
 - hard-wearing, water-repellent vinyl cover • year-round protection
- Ø 47 cm Cover sleeve **914442** **12,-**
 Ø 57 cm Cover Deluxe model **914449** **25,10**

Safari Chef 30 & Safari Chef 30 Lite

- Compact all-rounder for cooking, grilling, baking and wok cooking
- Powerful stainless steel burner up to 1.8 kW
- Piezo ignition and variable flame adjustment
- Folding legs

Dimensions L x W x H: 39.2 x 22 x 22 cm, pack size: 32.6 x 32.6 x 22.5 cm.

① Safari Chef 30 Lite:

Includes 1 x pot stand, 1 x lid/wok Ø 27 cm, 1 x grill grate Ø 28 cm and carrying bag. Weight: 3 kg. **30 mbar*** **914989** **153,-**
50 mbar (for DE, AT) **914980** **153,-**

Safari Chef 30:

Includes 1 x pot stand, 1 x pan/lid Ø 27 cm, 1 x grill grate Ø 28 cm, 1x grill plate Ø 26 cm and carrying bag. Weight: 3.6 kg.

- ② HP Cartridge operation **915264** **175,-**
- ③ NP 30 mbar* **914984** **175,-**
- ③ NP 50 mbar (for DE, AT) **914982** **175,-**

Accessories:

- ④ Safari Chef 30 cover: water-repellent with drawstring, material: vinyl, Ø30cm **914548** **13,10**
- ⑤ Safari Chef 30 lid: Can also be used as a pan, dishwasher-safe **914547** **43,60**
- ⑥ Safari Chef 30 stainless steel lid: heat-resistant handle, for Safari Chef pan and paella pan 30, Ø 28.5 cm **914500** **19,60**



Citi Chef 40 -

The versatile, portable and easy to clean grill

- Robust, compact and easy to transport (carrying bag included)
- Power: 2.7 kW
- Thermometer in lid
- Included Pot stand and grill grate
- Automatic piezo ignition

The fat pan fits into the outer burner pan and is easy to remove and clean (dishwasher-safe). So you can use pots, the CADAC paella pan or the pizza stone. It is powered by a threaded cartridge with EN417 pressure regulator, the Cadac Power Pak or a refillable gas cylinder (Not included). Heat output: 2.7 kW, grilling surface: Ø 38 cm, weight: app. 5.8 kg, dims. LxWxH: 42.2 x 42.2 x 33.4 cm (assembled), 47.3 x 49.3 x 36.8 cm (packed).

Scope of delivery: grill with lid, 1 x pot stand, 1 x grill grate and transport bag

- ① Citi Chef 40 - Color: Black **925213** **65,40**



Optional accessories on page 284-286

- ② Citi Chef 40 - Color: Olive green **925215** **272,-**

E-Braai 40 Electric grill

230V

- Exact temperature setting via digital display
- Electric 2.3 kW heating coil for fast heating time
- Cover can be used as a wind or splash guard
- Easy to clean grill grate with GreenGrill ceramic coating
- Freestanding or table grill selectable

With the E-Braai 40 you will discover how delicious and easy electric grilling can be! Ideal for use on the balcony or in the garden, but you can also easily take it on vacation with the included carrying bag.

The 2.3 kW heating coil ensures a fast warm-up time. A removable glass ring protects the spiral from dripping fat. Thanks to the unique "Spot-on Grilling Technology", the temperature is measured directly on the grill (instead of under the lid). This allows it to be set precisely and kept constant at the desired temperature. The set temperature can be read on the digital display and is adjustable from 70 to 270 degrees, so slow cooking is also possible.

- ① Table grill Ø 40 cm **925200** **272,-**
- ② Freestanding Ø 40 cm **925201** **272,-**



272,-

¹ Carrying bag only included with 925200

* 30 mbar not permitted for DE, CH and AT

Pizza stones

different versions

- Heat resistant up to 300°C
- Also suitable for electric oven and other grills



Ø 25 cm

Ø 25 cm for CADAC Safari Chef 30, Grillo Chef 40 & Citi Chef 40
10 mm thick. 915213 21,80



In sizes

Ø 33 cm and Ø 42 cm

Ø 33 cm for CADAC Carri Chef 50, Citi Chef 40 and Grillo Chef 40
10 mm thick, with chrome-plated holders. 915209 27,20

Ø 42 cm for CADAC Carri Chef 50
15 mm thick, with chrome-plated holders. 914526 32,70

Pizza stone Pro

- Deflector for optimal heat distribution
- Storage bag included

Ø 25 cm for CADAC Safari Chef 30
12mm thick 914530 32,70

Ø 33 cm for CADAC Grillo Chef 40 and Citi Chef 40
12mm thick. 914540 38,10

Ø 36 cm for CADAC Carri Chef 50
12mm thick. 914550 43,60



In the sizes Ø 25 cm, Ø 33 cm and Ø 36 cm

Pans for different applications

- Lightweight aluminum with GreenGrill ceramic coating or enameled surface
- For Cadac and other gas / electric grills



①

① Tapas set, 4-piece
706906 32,70



②

② Chef Pan 50
For Grillo Chef 40 and Citi Chef 40, incl. transport bag Ø 36 cm
914549 65,40
For Carri Chef 50 Ø 45 cm
914542 76,30



③

③ Roasting pan 50
For Carri Chef 50 with enamel-coated surface. Ideal for roasting chicken, lamb, vegetables, etc. Ø 37 cm
914543 54,50



④

④ Skottel 50® Ideal for the Carri Chef 50 for preparing wok/pasta dishes, sauces and even breakfast. Enameled surface Incl. practical carrying bag. Dimensions: Ø 49 cm
914529 76,30



⑤

⑤ Skottel® Warming rails
Set of 2 enameled rails for separating and keeping food warm.
91540 17,40



①

General accessories

① Pot stand for Carri Chef 50
Chrome-plated nickel
914581 13,10



②

Magnetic barbecue cutlery Made of heat-resistant nylon with magnetic, ergonomic handle. Adheres to metal surfaces, except stainless steel



③

② Barbecue tongs*
706900 13,10



④

③ Spatula and Fork*, 2-piece *with stainless steel 706902 33,80



⑤

④ Barbecue skewers, set of 6 stainless steel 706904 13,10



⑥

⑤ Stainless steel Smoker box Smoke chicken, meat, seafood and vegetables on your camping vacation. For wood and gas barbecues 706905 16,30



⑦

⑥ Digital Bluetooth Thermometer W/ LED display, temp. curve view & Bluetooth. Suitable for IOS & Android devices. Magnetic 706972 49,-



⑧

⑦ Digital thermometer Retractable probe, magnetic 706973 16,30

⑧ Grill brush with lid
For storage, even when the brush is still wet. Plastic bristles, ideal for cleaning ceramic, chrome, cast iron and enameled surfaces. 914509 10,90

Grill plates for Cadac grills

- Lightweight aluminium with GreenGrill ceramic coating
- Perfect heat distribution
- Easy cleaning



①

① Grill plate 30 smooth
For Safari Chef 30 Ø 30 cm
914545 43,60



②

Grill grate 30 ribbed
② For Safari Chef 30 Ø 30 cm
915214 43,60



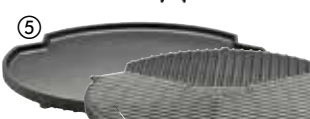
③

③ For Grillo Chef 40 and Citiy Chef 40 Ø 36 cm 91525 65,40



④

④ BBQ/Plancha Half grill grate open, half plancha smooth
For Safari Chef 30
Ø 30 cm 914546 39,95
For Grillo Chef 40 and Citi Chef 40 Ø 36 cm 915251 76,30
For Carri Chef 50
Ø 46 cm 914525 76,30



⑤

⑤ Reversible grill plate 40
For Grillo Chef 40 and Citi Chef 40. One side is smooth, the other side ribbed. Weight: 2,7 kg Ø 37 cm
915212 70,80



⑥

Grill2Braai Grill plates
One half is smooth, the other half ribbed. For Carri Chef 30, 40, 50
⑥ 40 cm 914519 65,40



⑦

⑦ Ø 45 cm 914528 76,30

CADAC | ↗ DOMETIC



30 recipes

17,40

Camping Cookbook

- 30 delicious recipes, easy to prepare
- Ideal for camping or at home
- Swiss bond

CADAC has developed great recipes that are easy to prepare while camping. You don't need a stove, just your (CADAC) grill! So you can vary every day at the campsite with delicious meals.

922000 17,40

CADAC | ↗ DOMETIC




General information Accessories

① **Grill mat Ø 52 cm**, For enameled or chromed surfaces. Easy to clean, dishwasher safe, non-stick. No oil necessary. **914448 7,60**

② **non-stick foil Ø 48 cm**
Grease-free baking in the scottel, nothing burns. Dishwasher safe **914444 6,50**

③ **Cadac Cleaner**
Cleans all enameled, chrome-coated parts and GreenGrill ceramic-coated grill surfaces. 400ml **914443 6,50**
Hazard: H222, H229, H314, H318 GP* 14,88 / 1 Liter

CADAC | ↗ DOMETIC



Quick Release Couplings 50 mbar


To connect and disconnect the gas hose with a simple click. With self-sealing valve for safe use.

With thread for German connection (suitable for 8 mm gas hose):

① **QR Coupling DE (1 x male, 1 x female connection)** for 50 mbar devices **914112 13,10**

② **QR Coupling DE (2 x male, 1 x female connection)** for 50 mbar devices **914113 16,30**

③ **QR Coupling DE (Rotating 90° connection)** for 50 mbar devices **914114 18,50**



Plug couplings 30mbar

To connect and disconnect the gas hose with a simple click. With self-sealing valve for safe use.

With thread for German connection:

① **Plug-in couplings for gas hose (1 x male, 1 x female connection)** for 30 mbar devices **914118 16,40**

② **Plug-in couplings for gas hose (1 x male, 2 x female connection)** for 30 mbar devices **914119 21,80**


③ **Plug-in couplings for gas hose (Rotating 90° connection)** for 30 mbar devices **914121 14,10**

CADAC | ↗ DOMETIC

Bayonet cartridge adapter

Adapter for converting a gas cartridge w/ bayonet connection to an EN417 threaded connection, w/ automatic closing function to prevent gas leakage. For use with CADAC EN-417 gas pressure regulators (Art. 914110/914111).

751602 8,70



CADAC | ↗ DOMETIC

Gas supply for CADAC grills

Dual Power Pak - Portable gas supply
Innovation from CADAC: A lightweight, portable dual gas supply for most gas appliances such as small grills, camping stoves or small heaters. screw on 2x 445g or 2x 500g EN417 threaded cartridges (not included) to use the Power Pak.

① **50 mbar 914106 43,60**
30 mbar* 914107 43,60

Trio Power Pak: uses 1 regulator and 3 inlets, incl. 85 cm hose. For gas cartridges with horizontal use.

② **50 mbar 914503 76,30**
30 mbar* 914504 76,30

③ **Gas cartridge** SSN-29 thread, bayonet connection, 227 g butane/propane gas mixture **914105 4,35**

④ **Threaded cartridge**
EN417 screw thread and self-sealing safety valve
445 g **914103 7,60**
500 g **914104 7,60**

⑤ **50 mbar universal regulator** With 85 cm hose, 1/4" male left-hand thread **914108 19,60**

⑥ **30 mbar* CG regulator**
Incl. 85 cm hose & hose clamps **914109 17,40**

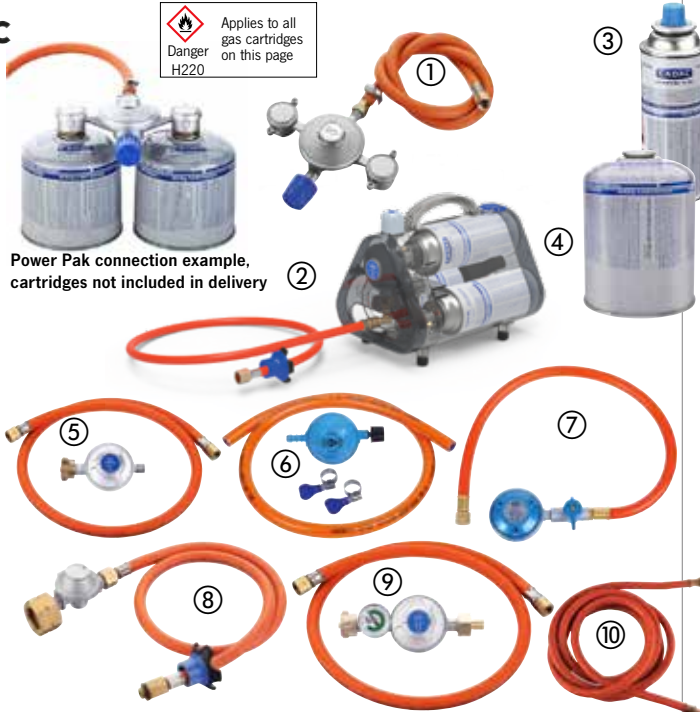
⑦ **EN417 Gas pressure regulator** w/ hose, suitable for 1/4" male left-hand thread
50 mbar 914111 25,10
30 mbar* 914110 25,10

⑧ **HP regulator,**
With 85 cm hose. **914506 38,10**

⑨ **Overpressure regulator 50 mbar** w/ 85 cm hose **914505 29,40**

⑩ **Hoses for outdoor socket 300 cm** **914508 21,80**

Danger H220 Applies to all gas cartridges on this page



Power Pak connection example, cartridges not included in delivery

* 30 mbar not permitted for DE and AT

LARGE SELECTION OF GAS BARBECUE ACCESSORIES

NEW
2024



CADAC | ↔ DOMETIC

Universal grill lid

- Heat-resistant handle
- Material: Aluminum
- Suitable for universal grill plates and for Cadac 2-Cook 3 grill plate

Dimensions L25 x W27 x H6 cm.
Weight 0.6 kg **915284 21,80**

Pan not included in the scope of delivery.

CADAC | ↔ DOMETIC

Universal grill plate

- Aluminum with GreenGrill ceramic coating
- Suitable for most available stoves

Is placed on the pot stand of the stove.
Includes removable handle and storage bag.
Dimensions L25 x W27 cm.

Ribbed grill plate 0,9kg 915282 43,60
Smooth Grill plate 0,8kg 915283 43,60



NEW
2024

CADAC | ↔ DOMETIC



Grill plates for 2-Cook 3

- Easy to clean
- Handle included
- Material: Aluminum plates with GreenGrill ceramic coating

① **Flat/smooth grill plate incl. removable handle**
Dimensions: 25x25cm, weight: 0,8 kg **915228 43,60**
② **Ribbed grill plate**
Dimensions: 25x25cm, weight: 0,9 kg **915229 43,60**

You can find the 2-Cook 3 stoves on page 291

CADAC | ↔ DOMETIC



Paella Pans

- High edge
- Alloy handles
- Non-stick coating

New version of the CADAC paella pan with higher sides and alloy handles. Material: aluminum with GreenGrill coating

① **Paella pan 30 - Ø28 cm, rim height: 5cm, with lid, for Safari Chef & 2-Cook 9145202 54,50**
② **Paella pan 40 - Ø36 cm, rim height: 6.5 cm, for Citi Chef 40 & Grillo Chef 9145201 65,40**
③ **Paella pan 50 - Ø47 cm, rim height: 7.5 cm, for Carri Chef, Citi Chef 50 or other gas or electric stoves 9145200 76,30**

CADAC | ↔ DOMETIC **Silicone molds Soft Soak**

- To soak and clean
- For grill plates and pans
- Heat resistant
- Perfect fit & easy to use

① + ② + ③



① **Silicone mold Soft Soak 30**
For grill plates & pans up to Ø28 cm, dims.: 39 x 35 x 6.5 cm, weight 0.9 kg **915230 21,80**

② **Silicone mold Soft Soak 40**
For grill plates and pans up to Ø38 cm, dims.: 48.5 x 44.5 x 6.5cm, weight 1.3 kg **915231 30,50**

③ **Silicone mold Soft Soak 50**
For grill plates and pans up to Ø46 cm, dimensions: 55.5 x 51.5 x 6.5 cm, weight 1.65 kg **915232 38,10**

④ **Silicone mold Soft Soak 2-Cook**
For 2-Cook grill plates 915228, 915229, dims.: 38 x 34 x 10.5 cm, weight 1.65 kg **915233 25,10**



CADAC | ↔ DOMETIC

Paella pan 50

- Lightweight aluminum with GreenGrill ceramic coating or enameled surface
- For CADAC & other gas/electric barbecues



Paella pan 50, Ø 47 cm
Ideal for Carri Chef 50, incl. transport bag **914521 70,80**

CADAC | ↔ DOMETIC **Coffee pot stand**



- Light
 - For 3 or 4-legged pot supports suitable for 2-Cook, Safari Chef 30, Citi Chef 40, Carri Chef 40.
- Material: stainless steel.
Dimensions: Ø 13.7 x H 0.6 cm.
Weight: 0.08 kg

914582 5,40

GOK

- ① **Standardcamping gas pressure regulator**, w/o pressure gauge For 5 and 11 kg gas cylinders. Not permitted in the motorhome/caravan sector.
30 mbar 751883 13,60
50 mbar 75188 21,50
- ② **Pressure regulator with separate shut-off outlets, without pressure gauge** For 5 and 11 kg gas cylinders. Not permitted in the motorhome/caravan sector.
- ② **2 Outlets 50 mbar 75109 31,60**
③ **3 outlets 50 mbar 75194 36,-**

Grill accessories



- ① **Powerful 230V grill motor** for grilled food up to 15 kg. **91482 41,40**
- ② **Holiday Travel Barbecue apron** Made of highquality leather w/ 2 pockets & adjustable straps.
Brown **955192 70,80**
Black **955193 70,80**

HOLIDAY TRAVEL
ESTD 1989
-Camping On Tour-

All items without decoration

NomadiQ BBQ - the portable gas barbecue

- Portable, lightweight design
- 2 large, separate grilling areas
- Usable with gas cartridge or gas bottle
- Power: 3.2 kW
- Easy cleaning and storage
- Color: Matte black
- Now even more durable with new enameled steel grill grate

Because of the portable, lightweight design, you don't have to worry about limitations of bringing a heavy, clunky grill. The NomadiQ has two gas burners that can be controlled independently of each other. It is operated with a gas cartridge or gas bottle. Dimensions unfolded: 19,5 x 66 x 43 cm, dimensions folded: 36 x 13 x 43 cm, weight: 5,6 kg.

Scope of delivery: Gas grill, gas regulator for gas cartridges with screw valve, hose, shoulder strap, 2 drip trays, instructions

- | | | |
|---|---------------|--------------|
| ① NomadiQ BBQ | 914010 | 306,- |
| ② NomadiQ protective bag Avoid scratches and dents. The soft polyester material ensures that your NomadiQ will not be damaged. | 914011 | 32,70 |
| ③ NomadiQ closed grill plate Replaceable grill grate w/ closed grill plate made of enameled steel. Dimensions: 27 x 35 x 1 cm. Weight: 500 g | 914014 | 54,50 |
| ④ NomadiQ non-slip mat This non-slip rubber mat prevents grill from slipping & protects table from heat and grease stains. | 914012 | 40,30 |
| ⑤ NomadiQ gas hose - 1.5 m long
Additional gas hose for connection to the gas cylinder. | 914013 | 32,70 |
| ⑥ NomadiQ gas hose - 3.0 m long Additional gas hose for connection to external gas socket. Transport bag included. | 914015 | 32,70 |
| ⑦ NomadiQ 500g Gas cartridge - Specially developed for the NomadiQ BBQ for a longer burning time. | 914017 | 10,90 |
| ⑧ Cleaning kit - 2-piece set with grill brush and cloth
Quick cleaning. Easy to use. | 914016 | 32,70 |



Gas or coal: Barbecue - Grill & Roaster



- Non-stick coated aluminum grill plate
- Grilling, cooking, roasting, smoking

① **Gas Barbecue Grill & Roaster**

The ideal barbecue for camping vacations, terrace and balcony. The aluminum lid reflects the heat inside the roaster, ensuring perfect heat distribution and preparation of your food.

Material: Grill: stainless steel handles and feet: fiberglass reinforced nylon. Dimensions: H 28.5 cm, Ø approx. 35 cm, dishwasher safe. Scope of delivery: Roaster with combustion chamber, grill plate with handles & lid. Hose and gas regulator not included.

50 mbar (for DE, AT) 916612 196,-

② **Safire tabletop grill** Allows grilling on the table or floor. **91662 82,80**

Safire accessories for both types of grills:

- | | | |
|--|---------------|--------------|
| ③ Extension ring, Ø 345 mm, H 75 mm | 91664 | 32,70 |
| ④ Cooler bag, Ø 360 mm, H 285 mm | 916642 | 32,70 |
| ⑤ Grill grate, Ø 295mm, H 15 mm | 916640 | 17,40 |



Portable gas grill in compact format

- Operation via gas cartridge or gas bottle possible
- Compactly stowable when folded
- Both burners separately infinitely adjustable
- Integrated piezo ignition for each burner

Foldable gas barbecue is a perfect companion for your camping vacations & leisure activities. When folded, it can be compactly stored in the carrying bag and conveniently taken anywhere. With a power of 3.3 kW (50 mbar) grilling becomes a pleasure. Dimensions grill surface (WxD): 56 x 30 cm, dimensions open (WxDxH): 56 x 30 x 17.5 cm, Dimensions folded (WxDxH): 19 x 30 x 33 cm Material: 96% steel, 2% plastic, 2% cast iron, Weight: 9.1 kg **914009 174,-**

GAS BARBECUES / GAS CARTRIDGE STOVES & ACCESSORIES



COBB

Gas barbecue COBB PREMIER GAS DELUXE 2.0 & PRO GAS BLACK

- Suitable for up to 4 people
- Delivery incl. griddle and grill plate
- Multifunctional outdoor kitchen for grilling, roasting, baking & smoking
- No smoke emission
- Cold on the outside - hot on the inside
- Anti-slip feet
- Food safe
- At least. 3 hours grilling with one gas cartridge
- High-quality stainless steel
- Easy to clean
- Safe to use

Operation with Gas cartridge, but can also be connected to a gas cylinder using a gas adapter hose. Technical specifications: Power: 1.3 kW, gas consumption: 95 g/h, height: 45 cm. Ø 41cm

- ① **COBB PREMIER GAS DELUXE 2.0**, weight: 5.4 kg **915280 288,-**
- ② **COBB PRO GAS BLACK**, material: powder-coated steel, weight: 5kg, color: black **915281 217,-**



COBB

NEW 2024

- ① **Roasting grid** - For indirect grilling on perforated grill plate and Griddle + for roasts, chicken, marinated meat **915292 32,70**
- ② **Wok** - For stews, soups, pasta, etc. Material: Stainless steel with encapsulated aluminum base **915293 65,40**
- ③ **Pizza stone** - Perfect result w/ roasting rack or perforated grill plate Material: Cordierite ceramic **915294 39,20**
- ④ **pan** - Ideal for fried eggs, omelettes, pizza, etc. Material: Stainless steel with encapsulated aluminum base **915295 65,40**
- ⑤ **bag for grill & accessories** - Color: black **915296 27,20**
- ⑥ **Gas cartridge** - butane/propane mix. Contents 500g **915297 9,75**
- ⑦ **Gas adapter hose** - For use with 5 or 11 kilo gas cylinders. Length 1.5m **915298 42,50**

CAMPINGGAZ



Attitude - Professional grilling and elegant style

- Perfectly even heat distribution thanks to stainless steel burners
- Power: 5 kW / 2 burners
- Injection molded aluminum lid in elegant matte black finish
- Grill grate dishwasher safe
- Soft, round carrying handles and Temperature display

Power: 5 kW. Supplied with hose and pressure regulator. Gas consumption: 360 g/h. Grill surface dims.: 58 x 36 cm, closed dims.: W 65 x D 52 x H 36 cm, dims. open: W 65 x D 69 x H73 cm, weight: 24.5 kg.

- ① **Attitude 2100 LX:**
Electronic ignition and analog temperature display.
30mbar 960202 359,-
50mbar 960203 403,-

- ② **Attitude 2100 EX:**
With InstaStart® ignition, digital temp. display (measures directly on grill surface for precise heat management) & illuminated control knobs.
30mbar 960204 435,-
50mbar 960205 490,-



Attitude 2go CV - Cartridge operation

Power: 2.4 kW. 1 burner, piezo ignition. Supplied with hose and Easy-Click regulator for cartridge operation. Dimensions grill surface: 48 x 26 cm, dimensions closed: W 59 x D 52 x H 36 cm, dimensions open: W 59 x D 47 x H 61 cm. Weight: 13 kg. **960206 250,-**

CAMPINGGAZ



Accessories for Attitude gas barbecue

- ① **Attitude Premium cover**
Protects the grill from the sun, heat, rain and cold.
Water repellent and breathable.
For Attitude LX/EX 916001 41,40
For Attitude 2go CV 916002 34,90
- ② **Culinary Modular cast iron pan for Attitude 2100**
With the integrated stainless steel grid **916003 76,30**
- ③ **Culinary Modular Pizza stone for Attitude 2100**
Ø 29 cm **916004 43,60**
- ④ **Professional barbecue tongsw/ lock.** Length: 45 cm. Ergonomic handle made of stainless steel, ABS and suspension eye, handle length: 25 cm. **70698 31,60**



Folding gas cartridge stove "Flap'n'Cook"

- Incl. 2 pot racks and 1 grill plate
- Piezo ignition
- Small pack size
- Practical carrying handle
- Snap lock
- Incl. Gas hose



109,-



To use, open the snap lock, connect the gas hose and the 2 separately operable burners can be used as required. The stove is supplied with 2 grids and 1 grill plate. Everything can be stored in the grill and transported conveniently with the heat-resistant plastic carrying handle.

Dimensions: open: L 50 x W 21.5 x H 6.4 cm / closed: L 27.5 x W 21.5 x H 12.7 cm. Technical specifications: Number of burners: 2, Output: 2x 2.3 kW, Gas consumption g/h: 2x 167g/h, Ignition: Piezo, Weight: 2.8kg, Color: Grey/Black
706628 109,-



GOURMET gas cartridge stove

- With ignition fuse
- Power 2.2 kW
- Stainless steel surface
- Incl. Plastic carrying case

L343 x W 280 x H 118 mm, power: 2.2 kW. With piezo ignition and ignition fuse. The maximum diameter of the pan to be used is 340 mm. Weight: app. 1.77 kg. Matching valve cartridge art. no. 942000 (not incl.)

Incl. Carrying case



46,90

Gas cartridge stove GOURMET GRILL

- Piezo ignition & ignition fuse
- Non-stick coated and removable grill plate
- removable grease drip tray
- Stainless steel burner
- "Push & Turn" safety switch-on button
- Grease drain integrated in the grill plate
- Easy to clean
- Incl. Plastic carrying case

Dimensions W 43 x D 29 x H 12 cm, weight: app. 4 kg, Power: 2.2 kW, consumption: 160 g/h, Suitable for this: Valve cartridge - item no. 942000 (not incl. in scope of delivery)



98,10



GOURMET DOUBLE gas cartridge stove

- Two-burner hob 2x 2.2 kW
- Incl. Case for transportation and storage
- Ignition fuse
- Piezo ignition

The 2 burners of cartridge gas stove can be operated independently of each other, as each uses a separate gas cartridge. The stove is supplied in a case (dims. 690x325x130mm).

Tech. specifications: Number of burners: 2, Power: 2x 2.2 kW, Ignition: Piezo, Ignition safety device: Yes, Depth: 68 cm, Width: 28 cm, Height: 12 cm, Weight: 5.4 kg, Color: Stainless steel, Material: Stainless steel. Matching valve cartridge art. no. 942000 (not included)



Incl. Carrying case



119,-

Accessories are available separately on page 290, e.g. toaster attachment, grill plate, grill pan.



Cook'n'Fold - Gas cartridge stove

- Retractable feet
- Compact with small pack size
- With ignition fuse
- Incl. practical storage case

For screw-in cartridges, output: 2.4 kW, gas consumption: 175 g/h.
Dims.: W 30 x D 22.5 x H 12/23 cm, weight: 1.8 kg

	706622	81,70
Suitable Gas cartridges: Camp4 screw-in cartridge,		
450g gas	942001	8,70

Grill pan and plates

- Easy to clean and maintain
- With non-stick coating

① Grill pan - Cooks gently, Lid with handy handle. Dimensions: 24 x 21 x 6 cm.	706627	32,70
② Grill plate round - w/ drain pan, large Grill surface, Ø 32cm.	706624	15,30
③ Smooth grill plate - Even heat conduction, dimensions: 25 x 25 cm.	706625	20,70
④ Grooved grill plate - Optimal use of space. Dimensions: 25 x 25 cm.	706626	20,70

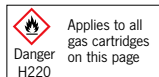
Accessories for Gas cartridge stoves:

- ① **Camp4 Sandwich Toaster for Gas Stove**
With non-stick coating and handle. Can also be used separately as 2 pans. Material: aluminum, dimensions: 13,5 x 15 cm, handle length: 21 cm, weight: 0.46 kg. **921711 19,60**
- ② **Pot cross as attachment for gas cartridge stove, 2 pcs.**
The pot cross allows smaller pots, pans, and espresso pots to be used on larger cooktops. Material: Chrome plated steel. Can also be used upside down as a trivet. Dimensions: ca 14 x 14 cm, height ca 2 cm. **2 pcs. in set 706641 6,25**
- ③ **Camp4 Foldable aluminum wind and splash guard**
9 fold with mounting hooks, ideal for cartridge stoves and gas stoves. Weight: approx. 0.3 kg. **Height: 24 cm, Width: 84 cm, Pack size: 24 x 9 x 2 cm. 70664 15,20**
Höhe 30 cm, suitable for Cook'n'Fold cartridge stove, width: 84 cm, pack size: 30 x 9 x 2 cm. **706640 16,30**
- ④ **Camp4 Toaster**
Foldable and small for placing on the gas burner or on the teapot. For up to 4 slices of toast. **92171 10,40**
- ⑤ **Camp4 toaster with folding handle**
Can be folded up and stored very compactly. For 2-4 slices of toast. Made of stainless steel. Dimensions: 20 x 20 x 1 cm. **70659 18,50**
- ⑥ **Camp4 folding sandwich maker**
For 1 slice of toast or 1 sandwich. Made of stainless steel. Dimensions: 29 x 11.5 x 4 cm. **70674 10,90**



220g CRV gas cartridge

- CRV system
 - Constant gas flow from start to finish
- CRV system prevents explosions under extremely high temperatures and pressure. 100% Butane
942000 4,35



450g Screw cartridge

- EN-417
 - Double wall thread
 - Self-sealing safety valve
- Content: 10-20% N-butane, 60-70% isobutane, 18-24% propane
942001 8,70

BRUNER

NEW
2024

DEVIL cartridge gas stove

- 1-flame
- Aluminum burner
- Incl. Transport case

Tech. specifications: Number of burners: 1, Power: 2.2kW, Piezo ignition, without safety pilot, Depth: 28.6 cm, Width: 37.2 cm, Height: 12.5 cm, Weight: 2.2 kg, Color: Silver anodized, Material: Stainless steel

706100 47,90



BRUNER

NEW
2024



59,90

DEVIL SD NG cartridge gas stove

- 1-flame
- Stainless steel burner
- Sealed valve
- Protection against overpressure
- Ignition fuse and piezo ignition
- incl. transport case

1 burner, output: 2.2kW, consumption: 155g/h, piezo ignition, with safety pilot, depth: 28.6 cm, width: 37.2 cm, height: 12.5 cm, weight: 2kg, color: dark grey

706102 59,90



NEW
2024

BRUNER

DEVIL HEATSTAR radiant heater for DEVIL Gas cartridge stove

- High temperature resistant construction
- Stainless steel
- Simple installation

Radiant heater converts a normal flame generated by the stove into heat energy. Tech. specifications: Width: Ø11.5 cm, Height: 15.5 cm, Weight: 0.3 kg, Color: Black/Silver, Material: Steel

706101 20,20



CADAC | **DOMETIC**

50 mbar

2-Cook 3 Classic Stove, Pro Stove & Pro Deluxe Stove

- Windshields included
- Grill surface: 2x 25 x 27 cm

① **2-Cook 3 Classic Stove** - 2 burners, incl. windbreak. With 3.9 kg and 4.4 kW, easy to use, handy and robust. Dimensions: 55 x 33 x 9 cm. Weight: 5.8 kg
50 mbar (for DE, AT) 915269 87,20



② **2-Cook 3 Pro Stove**
• Nylon case with stainless steel cooking surface
Power: 4.4kW. Incl. Pot Rack. With piezo ignition. Consumption: 160g/h
Dimensions: 55 x 30.7 x 9 cm. Weight: 3.9 kg
50 mbar (for DE, AT) 915235 109,-



③ **2-Cook 3 Pro Deluxe Cooker** -
• Grill plates (1x smooth & 1x ribbed), removable handle, pot stand & coffee pot stand, carry/and storage bag included
2 burners, rubber feet and closing clip. The rubber feet give extra stability. With piezo ignition and 2 independent burners. Dimensions: 55 x 31 x 9 cm. Weight: 5.8 kg.
50 mbar (for DE, AT) 915272 186,-



CADAC | **DOMETIC**

NEW
2024

50 mbar



2-Cook Turbo

- Portable 2-burner stove
- Ignition fuse: Fcertified for indoor use
- 2 independent 2.2KW Turbo Technology burners (patented)
- New burner design with inner flame, less susceptible to wind
- 20% less cooking time needed
- Includes Windshields, pot stand and carrying/storage bag
- Gas button protection (press and turn)
- Cover can also be used as a windbreak
- Automatic piezo ignition

① **2 Cook 3 Turbo Stove**
Grill surface: 2x 25 x 27 cm, weight 3.9 kg, power: 2x 2.2 kW.
915288 142,-

② **2 Cook 3 Turbo Deluxe Incl. smooth + ribbed plate (GreenGrill coating) and removable handle.**
Grill surface: 2x 25 x 27 cm, weight: 5.75 kg, power: 2x 2.2 kW
915289 218,-

BRUNER



NEW
2024

①



NEW
2024

②



DEVIL KOOKMASTER

Devil Kookmaster gas stove: a culinary must-have that will revolutionize your outdoor cooking experience. This 2-burner hob w/ its elegant stainless steel cooking surface combines functionality with style. With its piezoelectric ignition, the stove can be switched on effortlessly. The stove is equipped with a practical lid and handle for easy transportation and is perfect for outdoor adventures or as a reliable backup at home.

① DEVIL KOOKMASTER 30 + 50

Incl. 2 pot stands, power: 2 x 2.4 kW, dims.: 53.5 x 31 x 9.5 cm. Weight: 4.0 kg

30 mbar 915273 92,60

50 mbar (for DE, AT, CH) 915274 92,60

② DEVIL KOOKMASTER GP 30 + GP 50

The Devil Kookmaster GP is supplied with one smooth and one ribbed grill plate. Power: 2 x 2.4 kW, dims.: 53.5 x 31 x 9.5 cm. Weight: 5.3 kg

30 mbar 915275 141,-

50 mbar (for DE, AT, CH) 915276 141,-

CAMPINGGAZ



①



② + ③



NEW
2024

④



Grease collection system with easily removable/washable drawer

Camping stove	① Camp'Bistro™ 3	② Camp'Bistro™ DLX	③ Camp'Bistro™ DLX Stopgaz	④ Bistro™ GRILL
Operation with	CP 250	CP 250	CP 250	CP 250
Power & gas consumption	2200W (160 g/h)	2200W (160 g/h)	2200W (160 g/h)	1900W (137 g/h)
Burning time	1 hour and 15 min.	1 hour and 15 min.	1 hour and 15 min.	1 hour and 40 min.
Ignition	Piezo	Piezo	Piezo	Piezo
Material	Stainless steel, aluminum, enameled steel, plastic	Stainless steel, aluminum, enameled steel, plastic	Stainless steel, aluminum, enameled steel, plastic	Painted steel, galvanized steel, die-cast aluminium
Extras	Safety-Lock, steel pan supports & cooking surface	Safety-Lock, stainless steel pan supports and cooking surface	Safety-Lock, Stopgaz - can be used in ventilated interiors, stainless steel pan supports & cooking surface	Safety-Lock, grill plate made of die-cast aluminum with non-stick coating
Size WxDxH	36,0 x 13,7 x 32,0 cm	37 x 27,9 x 12,3 cm	37 x 27,9 x 12,3 cm	46,5 cm x 30,5 cm x 13 cm
Weight	1,6 kg	1,73 kg	1,87 kg	2,9 kg
Scope of delivery	Transport case	Transport case	Transport case	Transport case
Item no.	706480	7064700	706474	706476
Price	38,20	49,10	70,90	109,-



2-burner stove BASE CAMP™ without lid

Power: 2 x 1.6 kW, operating pressure 50 mbar, consumption: 2 x 116 g/h. Boiling time for 1 liter: water 7.5 min. Dimensions: 43 x 24 x 7.5 cm. Includes 80 cm hose.

50 mbar (for DE, AT, CH) 706441 49,10



Gas cartridge CP 250

Campinggaz CP 250 valve cartridge 220 g isobutane gas

91406 6,-
(GP*21,96/1 kg)



Cartridges R904 + R907 can be found on pg. 294

Camping stove	① Camping Kitchen™ 2	② Camping Kitchen™ 2 CV	③ Camping Kitchen™ 2 MAXI	④ Camping Kitchen™ Grill & Go CV	⑤ Camping Kitchen™ 2 MULTI COOK
			<ul style="list-style-type: none"> • Large hob for pans and pots up to Ø 28 cm • Enameled pan supports • All-round draft shield 		<ul style="list-style-type: none"> • Enameled pan supports • All-round draft shield • Incl. Grill plate for grilling and toasting
Print	50 mbar	Cartridge	50 mbar (96028) Cartridge (96029)	Cartridge	50 mbar
Operation with	R904, R907, butane or propane gas cylinder	CV 470 Plus	R904, R907, butane, propane Gas cylinder OR cartridge	CV 470 Plus	R904, R907, butane or propane gas cylinder
Power & gas consumption	4000W (2 x 145 g/h)	4000W (2 x 145 g/h)	3600W (2 x 130 g/h)	4000W (2 x 145 g/h)	3600W + 900W (2 x 130 g/h + 73g/h)
Burning time	R907 (9 h 30 min.) R904 (6 h 10 min.)	CV470 (1 h 30 min.)	R907 (app. 10 h 35 min.) R904 (6 h 55 min.) CV 470 Plus (1 h 40 min)	CV470 (1 h 30 min.)	R907 (8 h 15 min.) R904 (5 h 35 min.)
Ignition	Manual	2 x piezo	2 x piezo	2 x piezo	2 x piezo (incl. tube burner)
Material	Painted steel, plastic knobs	Painted steel, plastic knobs	Painted steel housing, plastic knobs, hob and draft shield coated with special paint for high temperatures, enameled steel pan supports	Stainless steel hob, painted steel lid, plastic knobs	Housing made of painted steel, knobs made of plastic, hob and draft shield coated w/ special paint for high temperatures, pan supports made of enameled steel,
Extras		Pot support made of enameled steel 2x 22 cm Ø	Pan support 28cm Ø	Plancha and grill plate made of enameled steel with non-stick coating	Pan support 20cm Ø, grill plate made of die-cast aluminum
Size WxDxH	Open: 49x45x33 cm Closed: 49x35x10 cm	Open: 49x45x33 cm Closed: 49x35x10 cm	Open: 53x40x38.8 cm Closed: 53x36x10.8 cm	Open: 49x45x33 cm Closed: 49x35x10 cm	Open: 62x38.8x36 cm Closed: 60x35x10.8 cm
Weight	3,8 kg	3,5 kg	4,4 kg	5,5 kg	5,4 kg
Scope of delivery	Hose	Hose and regulator for CV cartridge	Hose (96028), Hose and regulator (96029)	Transport bag, hose and regulator for CV cartridge	Hose
Item no.	96024	96025	96028 96029	96027	96030
Price	87,20	109,-	148,- 152,-	163,-	185,-

**Camping Cook -
The entry level model**

- With permanently attached hose and regulator for Easy-Click™ Plus cartridges
- 2x 1.8 kW power
- Enameled steel pot holder 2x Ø 22cm

Gas consumption: 261 g/h. Boiling time for 1 L water: approx. 6 min. 45 sec. Operation with CV470+, burning time: approx. 1 h 40 min. Manual ignition. Supplied with hose and regulator for CV cartridge. Dimensions: W 45 x D 30 x H 9.6 cm. Weight: 1.9 kg.

96026 70,80



CADAC

DOMETIC



Cartridge stove Safari Chef 30 Compact

- (Barbeque) grill and stove in one
- Grill grid: Ø 28 cm, smooth grill plate: Ø 26 cm, pan/lid: Ø 27 cm
- Lid can be used as a top

With integrated piezo ignition. Burner capacity: 1.82 kW, gas consumption 132 g/h (with 227 g bayonet cartridge). Transport bag included. Dimensions (WxDxH): 23 x 35 x 30.5 cm. Weight: 3.8 kg.

	925100	175,-
Lite, without smooth grill plate	925101	153,-

① 200 S - Compact 2 flame stove / grill

- Robust lid made of painted steel with snap closure
- Foldable windbreak on both sides
- Manual ignition
- 2 x 2.1 watt power

The 200S is a strong, stable and compact entry-level stove in brand quality, which convinces with its performance and simple operation.

Consumption: 2 x 155 g/h. Boiling time for 1 L water: approx. 6 min.

Weight: 5.7 kg. Dimensions closed: 52 x 39 x 12, open: 54.5 x 42.5 x 40.5 cm. With 80 cm hose.

50 mbar (for DE, AT, CH) **70737** **130,-**

Xcelerate™ 2-Burner Stoves / Grills with New Burner Technology

- Excellent stove performance in windy conditions
- Convenient to fold and transport
- Piezo ignition

The new line of portable 2-burner stoves from Campinggaz® combines a modern design and innovative technology for outstandingly improved cooking performance.

Thanks to innovative Xcelerate™ burner technology, wind cooking time is cut in half compared to traditional burner systems.

The top units have a frame with telescopic legs that attach to the bottom of the stove for easy transport.

Burner: 2 x 2,200 W, consumption 2 x 165 g/h. Boiling time for 1 L water: approx. 10 min. (at 3 m/s strong wind). 80 cm hose included.

①



② 400 S - Without grill plates

Pack size (WxDxH): 55.5 x 42.5 x 13.5. Dimensions open: 55.5 x 44.5 x 46 cm. Weight: 6 kg.

50 mbar (for DE, AT, CH) **706475** **152,-**

③ 400 SG - Includes 2 grill plates

Dimensions: see 400 s, weight: 7.8 kg.

50 mbar (for DE, AT, CH) **707251** **196,-**

④ 600 SG - With telescopic legs, 2 side work surfaces, textile shelf & 2 removable grill plates

Pack size (WxDxH): 63 x 42 x 18.5 cm, dims. open 107.5 x 57.5 x 112.5 cm.

Weight: 10.7 kg. **50 mbar** (for DE, AT, CH) **70729** **250,-**

CAMPINGGAZ®



② + ③



Xcelerate™ burner technology



CAMPINGGAZ®



Stand grills with 3 functions: Cooking, grilling, spit roasting

- 3 functions: Cooking, grilling, spit roasting
- 5.2 kW, 1 tubular steel burner
- Dishwasher safe fat collection tray
- Easy transport due to robust carrying handle
- All parts can be stored in the stove
- Grill surface 53 x 29 cm chromed steel
- Closed dimensions: 66 x 40 x 17.5 cm

400 SGR Camping Kitchen Grill

With Piezo ignition for safe starting. Rotary spit with battery motor. Supplied with hose, as well as rotary spit and rotary spit motor (batteries not included). Not for use in enclosed spaces.

Weight: 10.7 kg, consumption: 378 g/h. **50 mbar** (D, A)

960221 **207,-**



207,-

CAMPINGGAZ®



① C 206 GLS piercing cartridge with Gas Lock System

Butane/propane gas mixture in 80/20 ratio, net weight: 190 g, capacity: 314 ml, dimensions: Ø 9 x 9 cm (GP* 10,16/ 1 liter) **914101** **3,50**

② Valve cartridge CV 300 Plus

The safety valve allows the operation of Campinggaz appliances with Easy Clic™ or Easy Clic™ Plus Campinggaz screw cap. Cartridge can be easily removed from the appliance, even if it is not completely empty. Weight: 410 g. Dimensions: Ø 9 x H 10.5 cm. **91412** **10,10**

③ Valve cartridge CV 470 Net weight: 710 g, Burning time: stove app. 4.5 hours, lamp app. 7.5 hours Dims.: app. Ø 11 x H 14cm. Content 450 g (GP* 30,89/ 1 kg) **91411** **15,20**

④ Valve cartridge CV 470 All Season Gas 3-pack

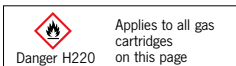
New isobutane-propane mixture enables use all year round. Composition: 85% butane/15% propane. Size (without cap): Ø9 x 10.5 cm. Weight: 440g **914122** **40,90**

⑤ Bottle 904 (hazardous goods, no shipping), Contents 1.8 kg. Dimensions: Ø 20 x H 19 cm 2 kg filled (GP* 44,42/ 1 kg) **91402** **87,20**

Empty bottle (in exchange for full bottle) **91402-1** **52,90**

⑥ Bottle 907 (hazardous goods, no shipping), contents 2.75 kg. Approx. Ø 20 x H 25.5 cm. 3 kg filled (GP* 31,25/ 1 kg) **91407** **95,40**

Empty bottle (in exchange for full bottle) **91407-1** **59,50**



One- or two-burner Spirit stove

① **Salsa - spirit stove, single flame**

Power: 1.0 kW, tank capacity: 0.4 l, dimensions: 250 x 320 x 120 mm, Weight: 1,4 kg **707160 83,90**

② **Mambo - Spirit stove, two-flame**

Power: 2 x 1.0 kW, tank volume: 0.8 l, dimensions: 500 x 320 x 120 mm. Weight: 2.5 kg. **707170 131,-**

③ **Methylated spirits** suitable for all spirit stoves. Content: 1 l

70718 6,50



Gas stove

① **Samba - single burner gas stove without lid, with ignition fuse**

Power: 1.6 kW, consumption: 110 g/h, dimensions: 250 x 294 x 85 mm, weight: app. 1.2 kg, scope of delivery: hose, 0.8 m with 2 x 1/4" left-hand thread.

30 mbar*, blue **707520 72,10** 50 mbar, blue **70752 71,30**
 30 mbar*, white **707521 72,10** 50 mbar, white **707522 72,10**

② **Rumba - Two-burner gas stove w/ lid & safety pilot** Power: 2 x 1.6 kW, consumption: 220 g/h, dims.: 500 x 294 x 84 mm. Weight: 3.1 kg, Scope of delivery: Hose, 0.8 m with 2 x 1/4" left-hand thread.

30 mbar* blue **707540 126,-** 50 mbar, blue **70754 125,-**
 30 mbar*, white **707542 126,-** 50 mbar, white **707541 126,-**

Rumba additionally with piezo ignition (not shown), Power: 1 x 1,6 kW, 1 x 2,2 kW.

30 mbar*, blue **707550 133,-** 50 mbar, blue **70755 133,-**
 30 mbar*, white **707552 133,-** 50 mbar, white **707551 125,-**

③ **Aluminum windbreak for Rumba**

Dimensions: 550 x 350 x 300 mm **70747 62,10**

④ **Lambada - three-flame stove with lid and ignition safety device**

Power: 2 x 1.6 kW and 1 x 2.2 kW, consumption: 380 g/h, 50 mbar, dims.: 600 x 325 x 85 mm. Scope of delivery: Hose, 0.8 m with 2 x 1/4" left-hand thread. Weight: 4,5 kg.

30 mbar*, blue **707570 163,-** 50 mbar, Blue **70757 174,-**
 30 mbar*, white **707572 174,-** 50 mbar, white **707571 163,-**

Aluminum windbreak for Lambada (not shown)

Dimensions: 650 x 380 x 300 mm **70748 70,80**

⑤ **contact grill surface** for all HPV two-burner hobs cast aluminum grill plate, Teflon-coated, dims.: 470 x 240 x 30 mm, weight: 1.4 kg.

70749 51,20



Mary - Gas stove 2 or 3 flames with ignition fuse and electric ignition

- Non-slip feet - safe stand
- With ignition fuse and electric ignition
- Good performance and adjustable burners

① **Gaskocher Mary 2-flame** Burner size: 10 cm, heat input: 2.2/2.2 kW, Color: black. Dimensions: 58 x 33 x 9 cm. Weight: 3 kg.

30 mbar* **70792 81,70**
 50 mbar (for DE, AT, CH) **70791 81,70**

② **Mary 3-burner**

gas hob Burner size: 2 x Ø 10 cm + 1 x 5.5 cm. Power: 2 x 2.2 kW + 1 x 850 W. Color: black. Dimensions: 58 x 33 x 9 cm. Weight: 4.4 kg.

30 mbar* **70794 109,-**
 50 mbar (for DE, AT, CH) **70793 109,-**

③ **Matching windshield for Mary 2 & 3**

70795 7,55



81,70





Enameled high quality gas stove with ignition fuse



- Extremely high quality burners
- Also available with 3.5 kW burners
- Enameled housing and painted pot support

① Gas stove 1 burner with ignition fuse
Dimensions: approx. 29 x 29 x 12 cm. Weight: 2.6 kg.

30 mbar*, 2.5 kW, White	91750	109,-
30 mbar*, 3.5 kW, white	917060	114,-
50 mbar, 3.5 kW, White (for DE, AT)	917067	115,-

Gas stove 2 flames with ignition fuse
Dimensions: approx. 47x29x11 cm. Weight: 3.8 kg.

② 30 mbar*, 2/1.5 kW, white	91752	155,-
② 30 mbar*, 3.5/3.5 kW, White	917061	163,-
50 mbar, 3.5/3.5 kW, White (for DE, AT)	917068	163,-
③ 30 mbar*, 3.5/3.5 kW, anthracite	917071	163,-
50 mbar, 3.5/3.5 kW, anthracite (for DE, AT)	917070	163,-

④ Gas stove 3-burner with ignition fuse
Dimensions: approx. 59 x 29 x 12 cm. Weight: 4.7 kg.

30 mbar*, 2.5/2.0 /0.65 kW, White	91754	228,-
30 mbar*, 3.5/3.5/0.65 kW, white	917062	217,-
50 mbar, 3.5/3.5/0.65 kW, White (for DE, AT)	917069	217,-



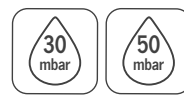
Hot plate for 2 burner stove

- Hot plate made of Teflon-coated die-cast aluminum
- For Parker 2-burner stove
- Incl. Frame and mounting

Ribbed	917072	98,10
--------	--------	-------



Professional stainless steel gas stove



- Stainless steel
- With ignition fuse

① Gas stove 2-flame with ignition fuse
Burner power: 1x 2.5 kW, 1x 3.5 kW. Dimensions: 62 x 33 x 15 cm. Weight: 7.5 kg.

30 mbar*	91758	610,-
50 mbar (für DE, AT)	91759	610,-

② Gas stove 2 flame with ignition fuse and removable stove top High quality professional gas stove with stainless steel lid. The removable stove top can be easily cleaned in the dishwasher. This allows the entire stove to be cleaned effortlessly. Burner power: 1x 1.5 kW, 1x 2.5 kW. Dimensions: 45 x 36 x 15 cm. Weight: 5.0 kg.

30 mbar*	917063	257,-
50 mbar (für DE, AT)	917064	257,-

Professional surface mounted gas stove for maritime use

- Specially developed for yachts & (sailing) boats
- Including cardanic suspension & adjustable pot holder
- Made of stainless steel

The professional surface-mounted gas stoves were specially developed for maritime use on boats and yachts. Made of stainless steel, with one or two powerful burners. The burners are equipped with electric ignition at the touch of a button.

③ 1-flame, Burner capacity: 2.5 kW, 30 mbar*. Dimensions without suspension: 29 x 31 x 19 cm. Dimensions incl. suspension: 34 x 31 x 30 cm. Weight: 4.4 kg.

	917065	425,-
--	--------	-------

④ 2-flame, burner capacity: 1x 1.5 kW, 1x 2.5 kW, 30 mbar*. Dimensions without suspension: 45 x 31 x 19 cm. Dimensions incl. suspension: 50 x 31 x 30 cm. Weight: 5.9 kg.

	917066	575,-
--	--------	-------



Camp4
OUTDOOR FASCINATION

330 mm
470 mm
330 mm

Mini gas stove

- For use with standard bayonet cartridges
- Piezo ignition
- Temperature range up to maximum 280°C
- With ignition fuse

Compact mini stove that operates with standard gas bayonet cartridges. The tempered safety glass furnace door, protection against incorrect insertion of the cartridge and the integrated ignition fuse ensure safe operation. The maximum baking temperature is 280°C. Up to 180 minutes of operating time per gas cartridge. Rated power: 1.1 kW. Oven capacity: 30 liters. Dimensions: 47x33x33 cm. Weight: approx. 9.6 kg.

Use with suitable bayonet cartridge: 942000 (see page 290)



70617 283,-




Camp4
OUTDOOR FASCINATION

30 mbar 50 mbar

460 mm
540 mm
300 mm

Portable gas stove oven combination

- Two burner stove and oven in one unit
- Volume: 25 L
- Cover can be used as a windbreak
- Housing made of high quality stainless steel
- With ignition fuse

L540 x W 300 x H460 mm, power hob: 1.6 kW / oven 0.6 kW, temperature display for exact internal temperature, oven timer with double glass, 1/4" left-hand thread connection.
Weight: approx. 16 kg.

50 mbar (for DE, AT) **70669** **326,-**
30 mbar* **70663** **326,-**

*Only authorized in the following countries: BG, CH, CY, CZ, DK, EE, ES, FI, FK, GB, HU, IE, IT, LU, LT, LV, MT, NL, NO, PL, PT, RO, SE, SI, SK, TR.



parker

30 mbar

485 mm
315 mm
450 mm

Oven incl. two burner stove

- With ignition fuse
- Total power 4,5 kW
- Incl. 2 pairs of pot holders for safe work
- For maritime use
- Stainless steel housing

Oven with bottom heat and grill function, oven cavity volume approx. 19 liters. Oven/grill power: 1 kW each, burner power two-flame stove: 1x 2.0 kW, 1x 1.5 kW. Connection pressure 30mbar. Lockable, semi-carcandanic suspension. Dimensions (WxHxD): 450x485x315 mm, weight: approx. 17.5 kg.

Approved for indoor use

70601 1216,-



parker

30 mbar 50 mbar

430 mm
315 mm
450 mm

Baby Cooker for indoor

- With safety valve
- Total power 4 kW
- 19 L gas stove
- Stainless steel housing

Oven with grill function, oven cavity volume approx. 19 liters. Oven/grill power: 1 kW each, burner power two-flame stove: 1x 2.5 kW, 1x 1.5 kW. Dimensions (WxHxD): 450 x 430 x 315 mm, weight: approx. 16.8 kg.

Approved for indoor use

70602 970,-




parker

Kit Maestro

The Maestro kit is an adapter for screwing on a threaded cartridge (screw-in cartridge) to operate a 30 mbar or 50 mbar grill. 304 stainless steel cover. Dimensions: diameter 15cm, height 33cm. Weight 1.4 kg.

30 mbar* **751604** **98,10**
50 mbar **751603** **98,10**