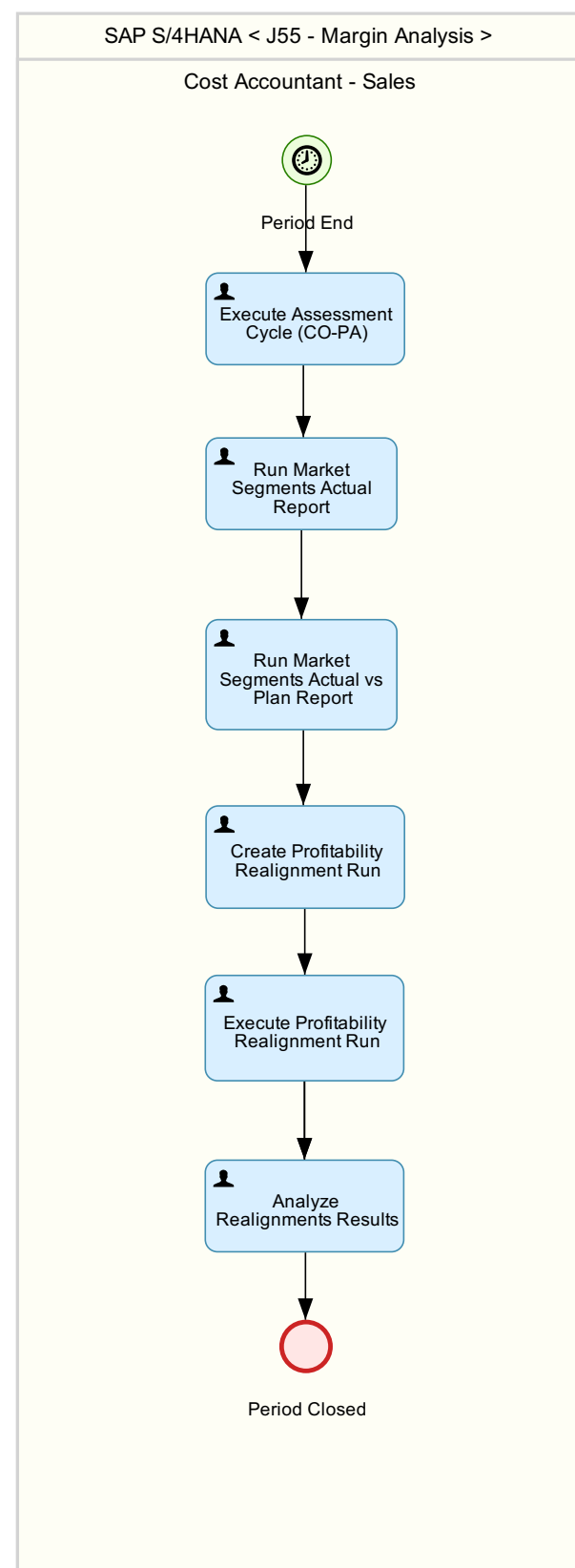


Margin Analysis (J55)

This scope item supports the following processes:

01 - Profitability and Cost Analysis



02 - Top-Down Distribution

J55 - Margin Analysis

General Ledger Accountant

Cost Accountant - Sales

Sales Order
Data is created -
BD9

Post Expenses
to Central Cost
Center

Create Top-Down
Distribution Cycle

Execute Top-
Down Distribution



Period-End

