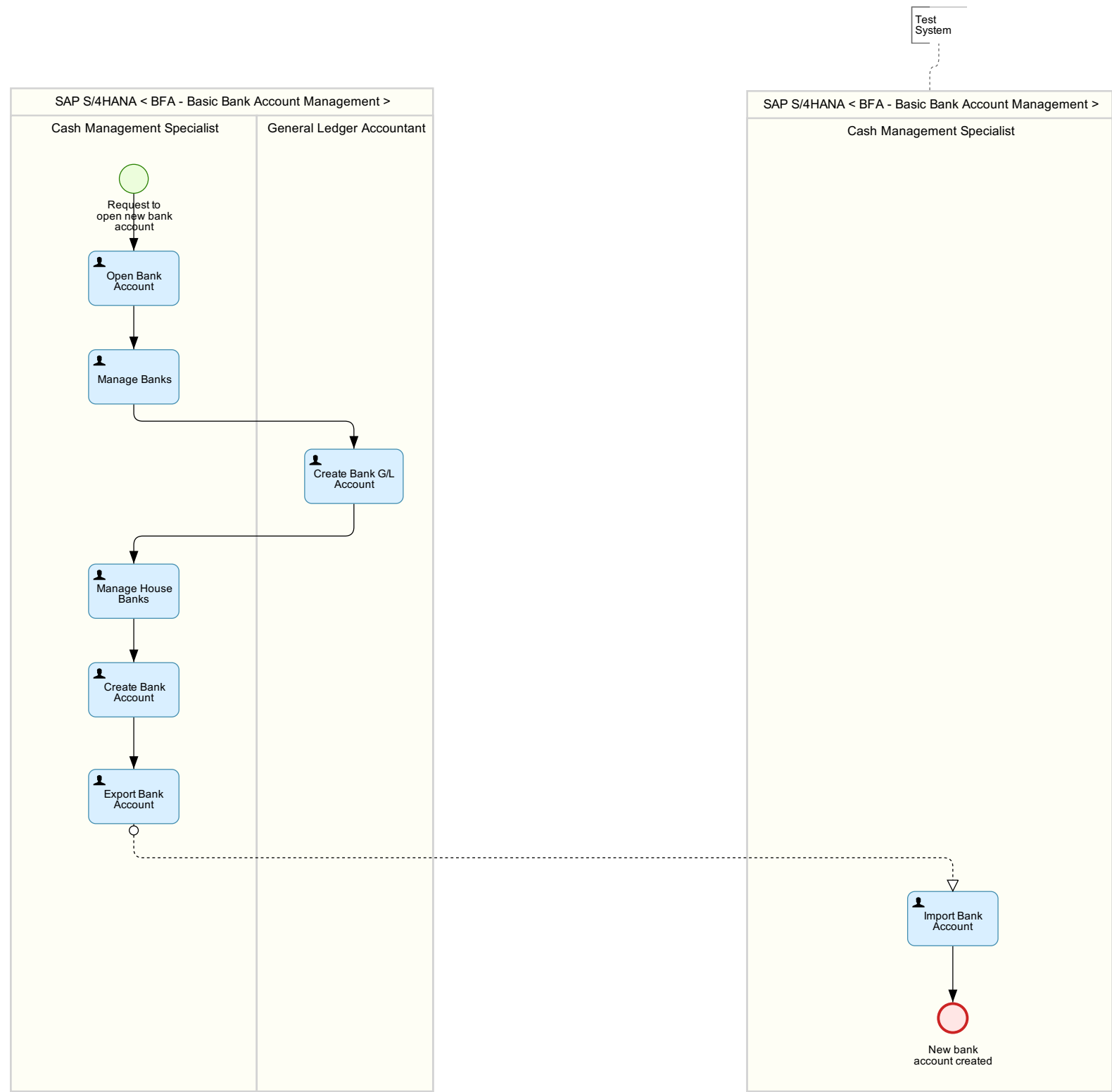


Basic Bank Account Management (BFA)

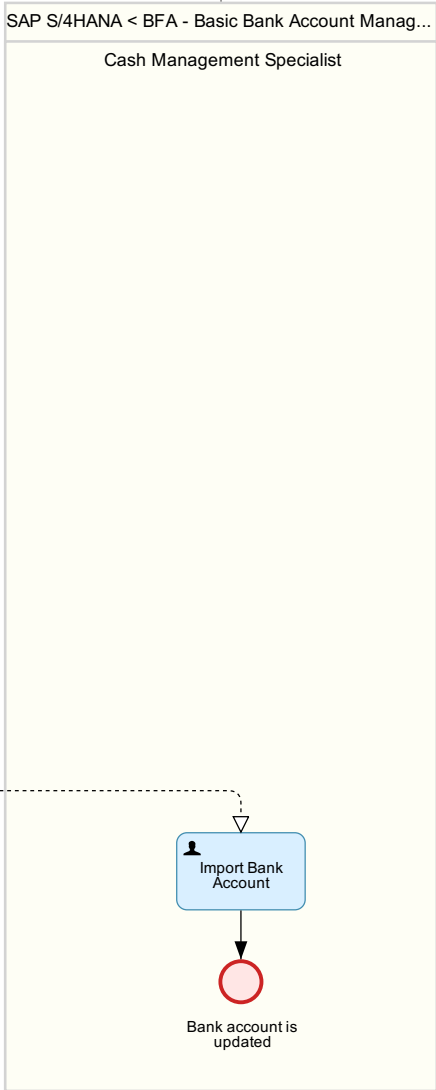
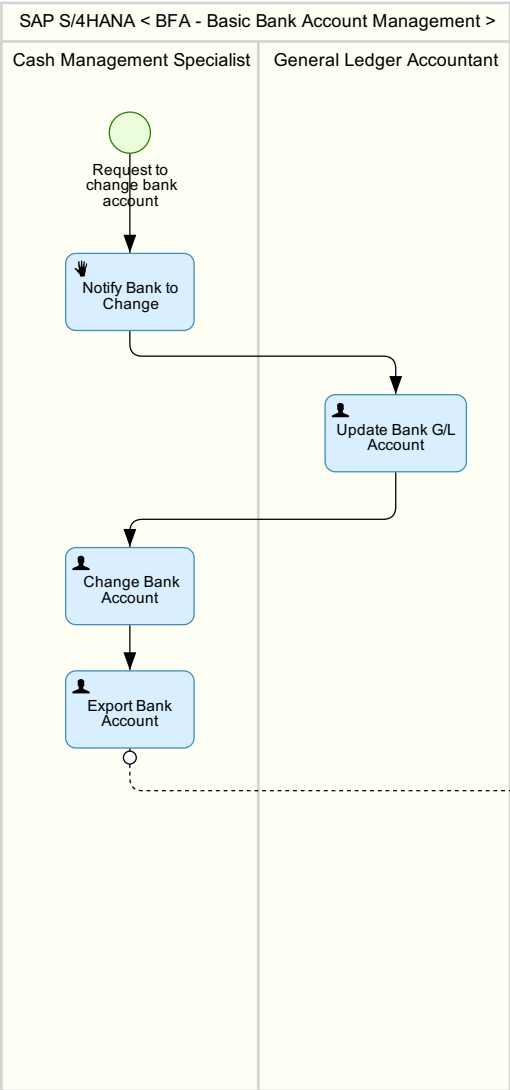
This scope item supports the following processes:

01 - Bank Account Master Data Processing with Basic Cash Management - Create Bank Account



02 - Basic Bank Account Management - Bank Account Master Data Processing with Basic Cash Management - Change Bank Account

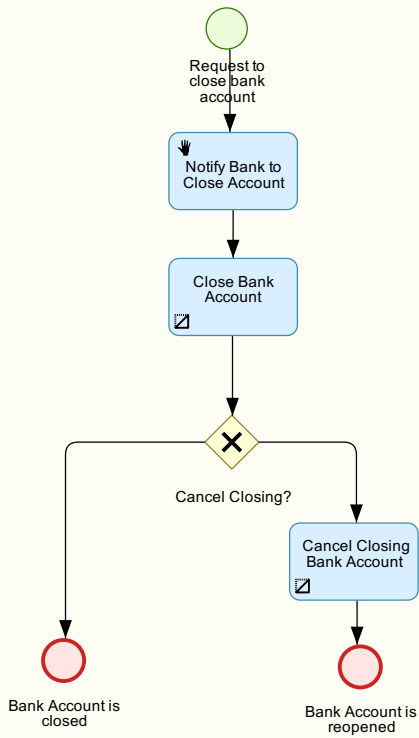
Test System



03 - Bank Account Master Data Processing with Basic Management - Close Bank Account and Cancel Closing

SAP S/4HANA < BFA - Basic Bank Account Management >

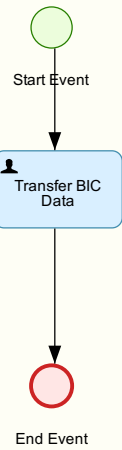
Cash Management Specialist



04 - Bank Account Master Data Processing With Basic Cash Management - Import Bank Data

BFA - Basic Bank Account Management

Cash Management Specialist



05 - Maintain Bank Chain

Accounts Payable Accountant

