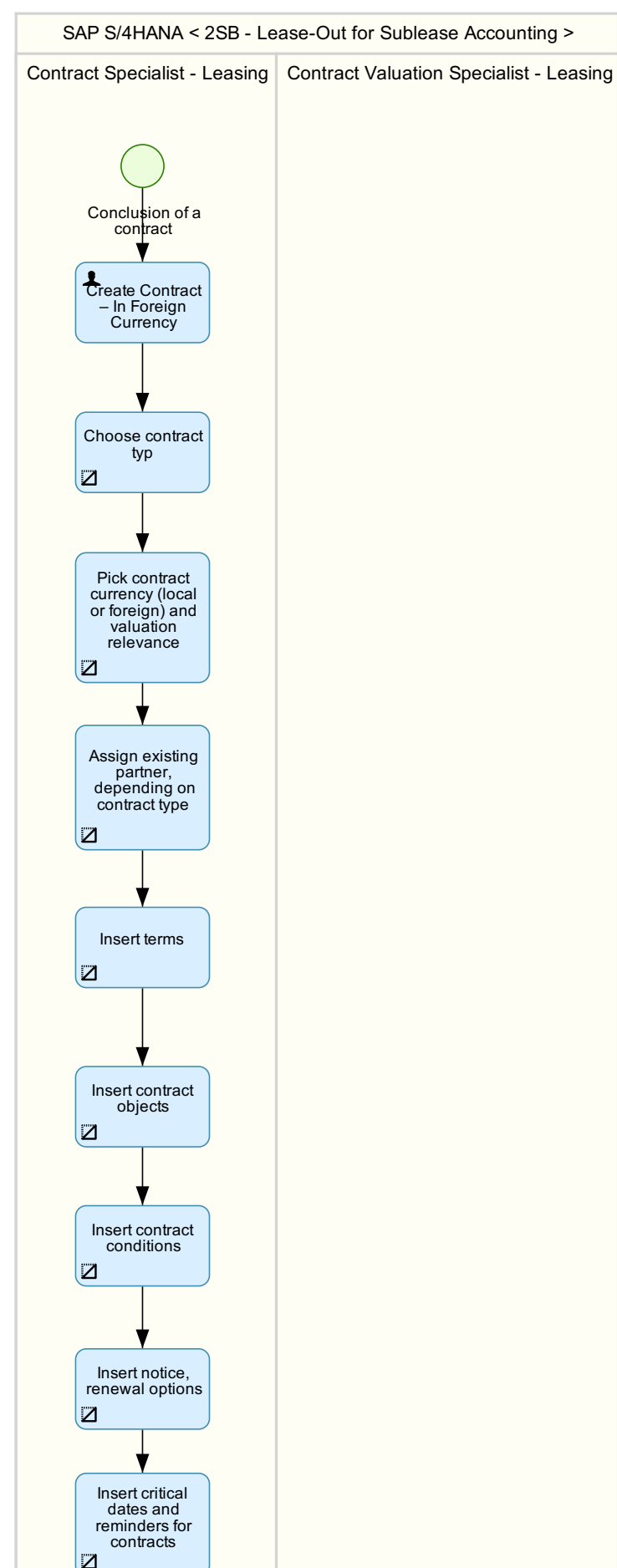
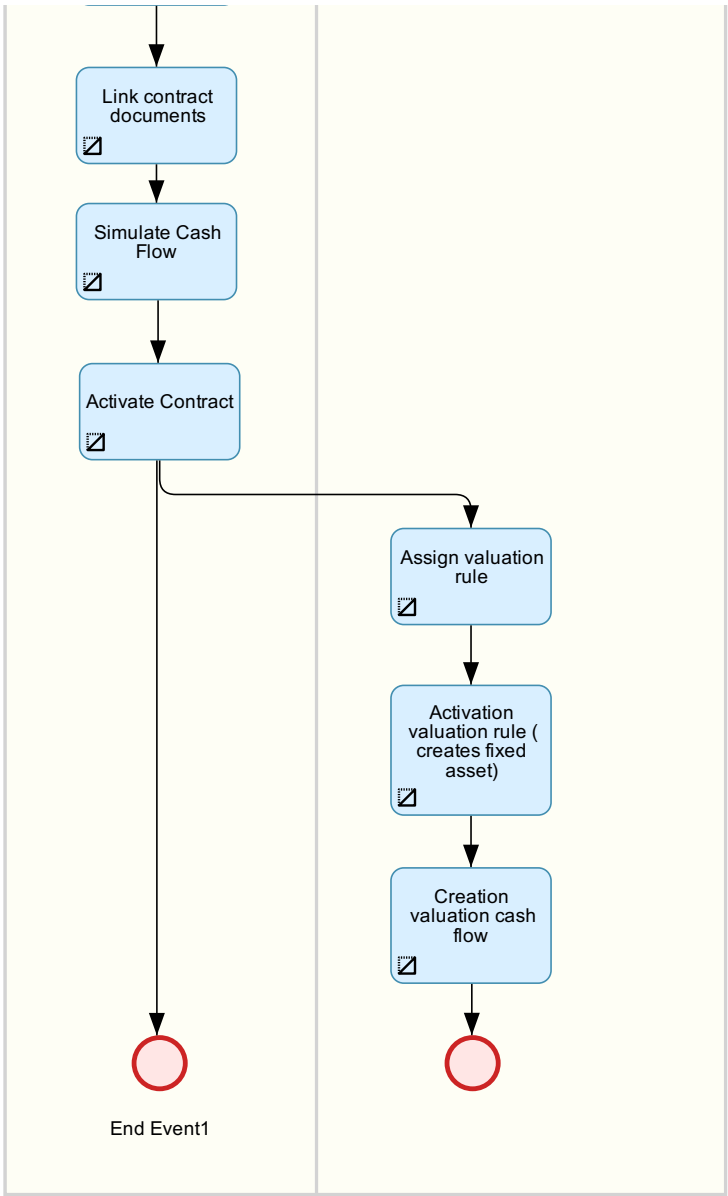


# Lease-Out for Sublease Accounting (2SB)

This scope item supports the following processes:

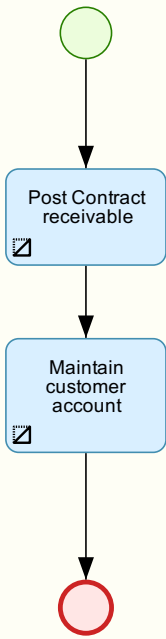
## 01 - New Contract





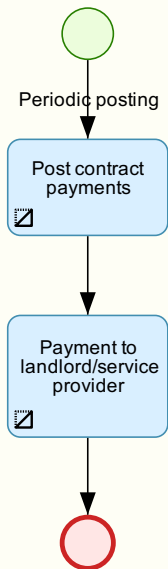
**02 - Periodic Posting Contract Debit**

Accounts Receivable Accountant - Leasing



03 - Post Contract Valuation

Contract Valuation Specialist - Leasing



04 - Maintain Contract

Different Changes of the contract

Change General Data

Assign other business partner

Maintain Terms

Maintain contract objects

Maintain contract conditions

Maintain notice, renewal options

Maintain Critical dates and reminders for contracts

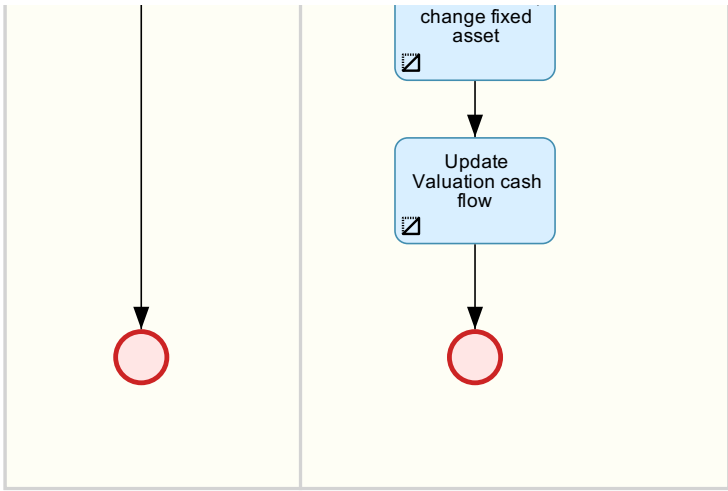
Link contract documents

Simulate Cash Flow

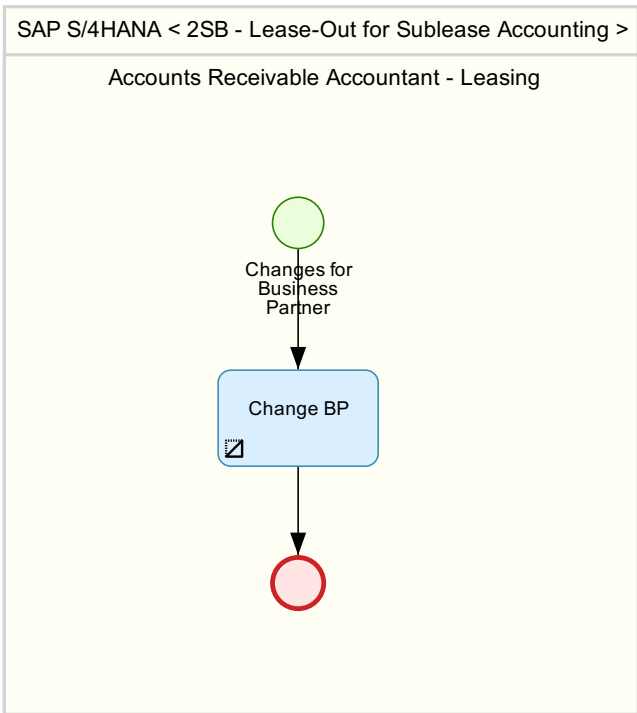
Update valuation

Update Valuation role,





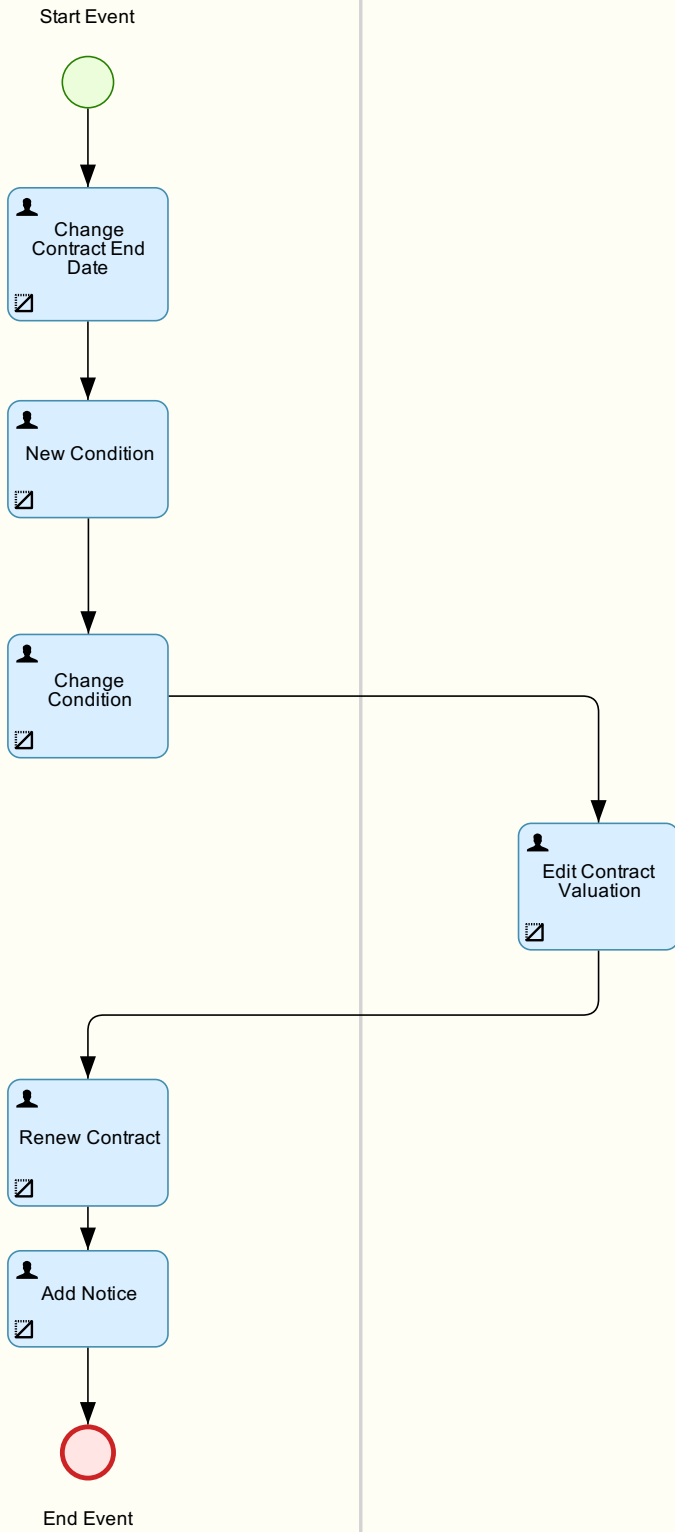
**05 - Change Customer**



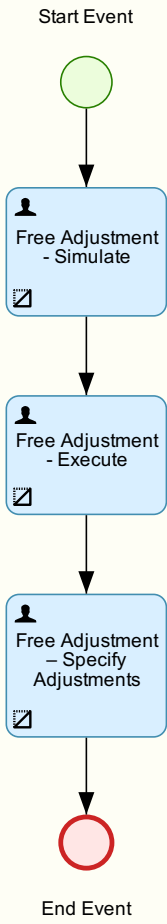
**05 - Maintain Contract- Subcontract**

Contract Specialist - Leasing

Contract Valuation Specialist - Leasing

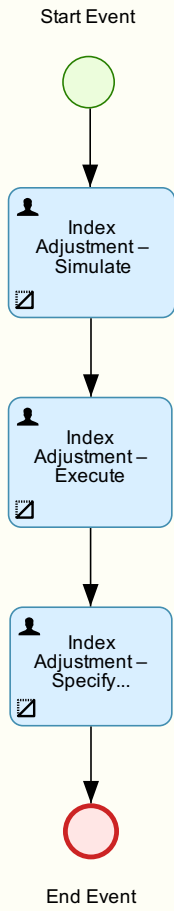


Contract Specialist - Leasing



07 - Index Adjustment

Contract Specialist - Leasing

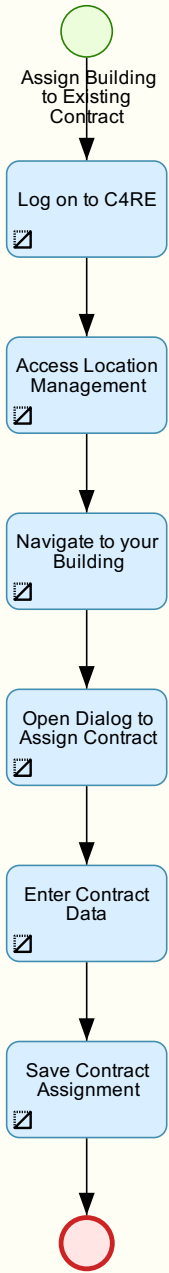




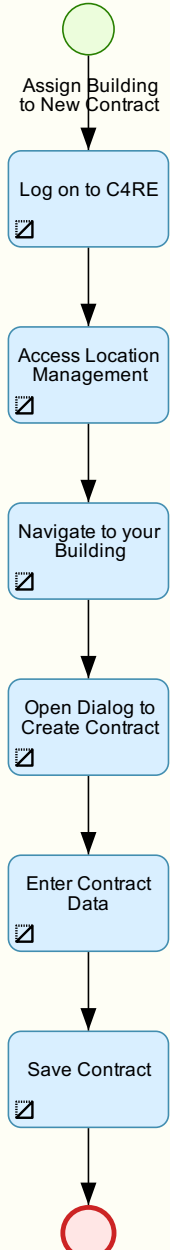
SAP S/4HANA < 2SB - Lease-Out for Sublease Accounting >

Contract Specialist - Leasing

Contract Valuation Specialist - Leasing



Contract Specialist Leasing

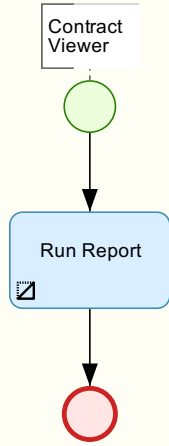
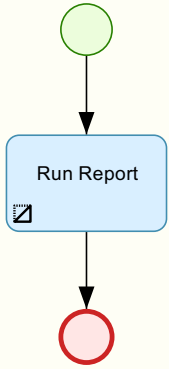


09 - Reporting Contract Manager (Viewer)

SAP S/4HANA < 2SB - Lease-Out for Sublease Accounting >

Contract Specialist - Leasing

Contract Manager

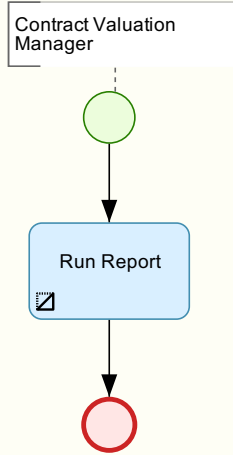
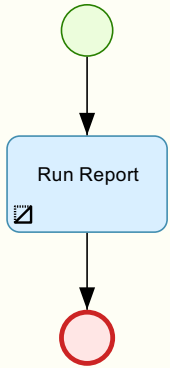


**10 - Reporting Contract Valuation Manager (Viewer)**

SAP S/4HANA < 2SB - Lease-Out for Sublease Accounting >

Contract Valuation Specialist - Leasing

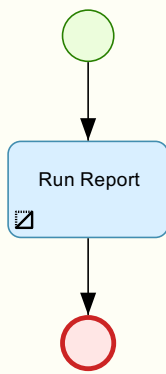
Contract Manager



**11 - Reporting Contract Manager AR**

SAP S/4HANA < 2SB - Lease-Out for Sublease Accounting >

Accounts Receivable Accountant - Leasing

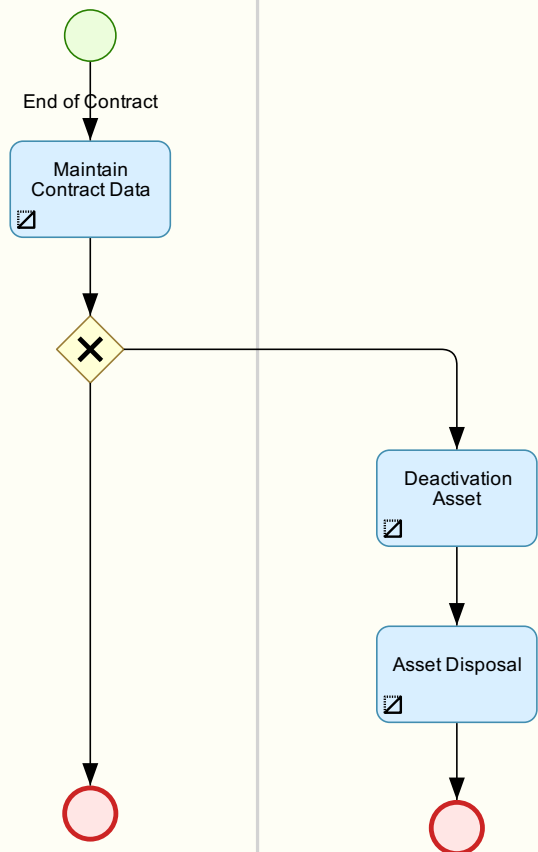


12 - End Contract

SAP S/4HANA < 2SB - Lease-Out for Sublease Accounting >

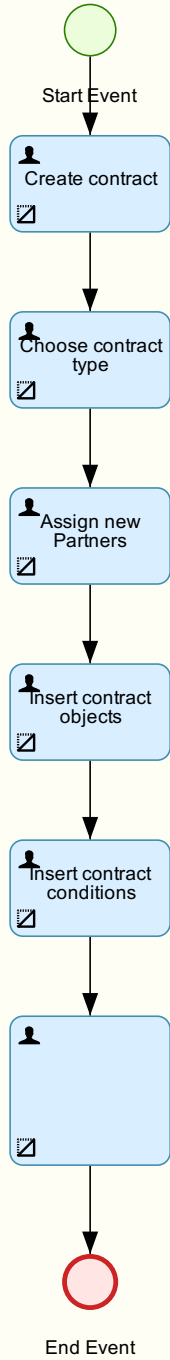
Contract Specialist - Leasing

Contract Valuation Specialist - Leasing



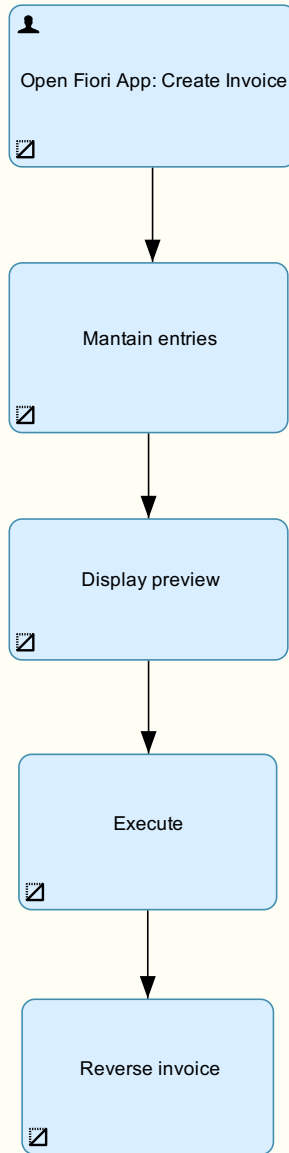
13 - Contract Management Fiori App

Contract Specialist - Leasing



2SB - Lease-Out for Sublease Accounting

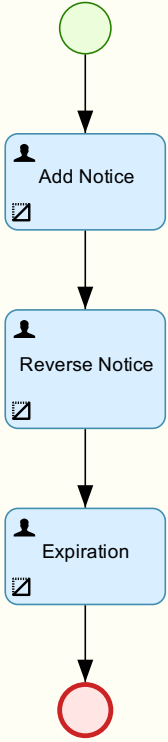
Accounts Receivable Accountant - Leasing



**End Contract**

Contract Specialist - Leasing

End of Contract



End Event