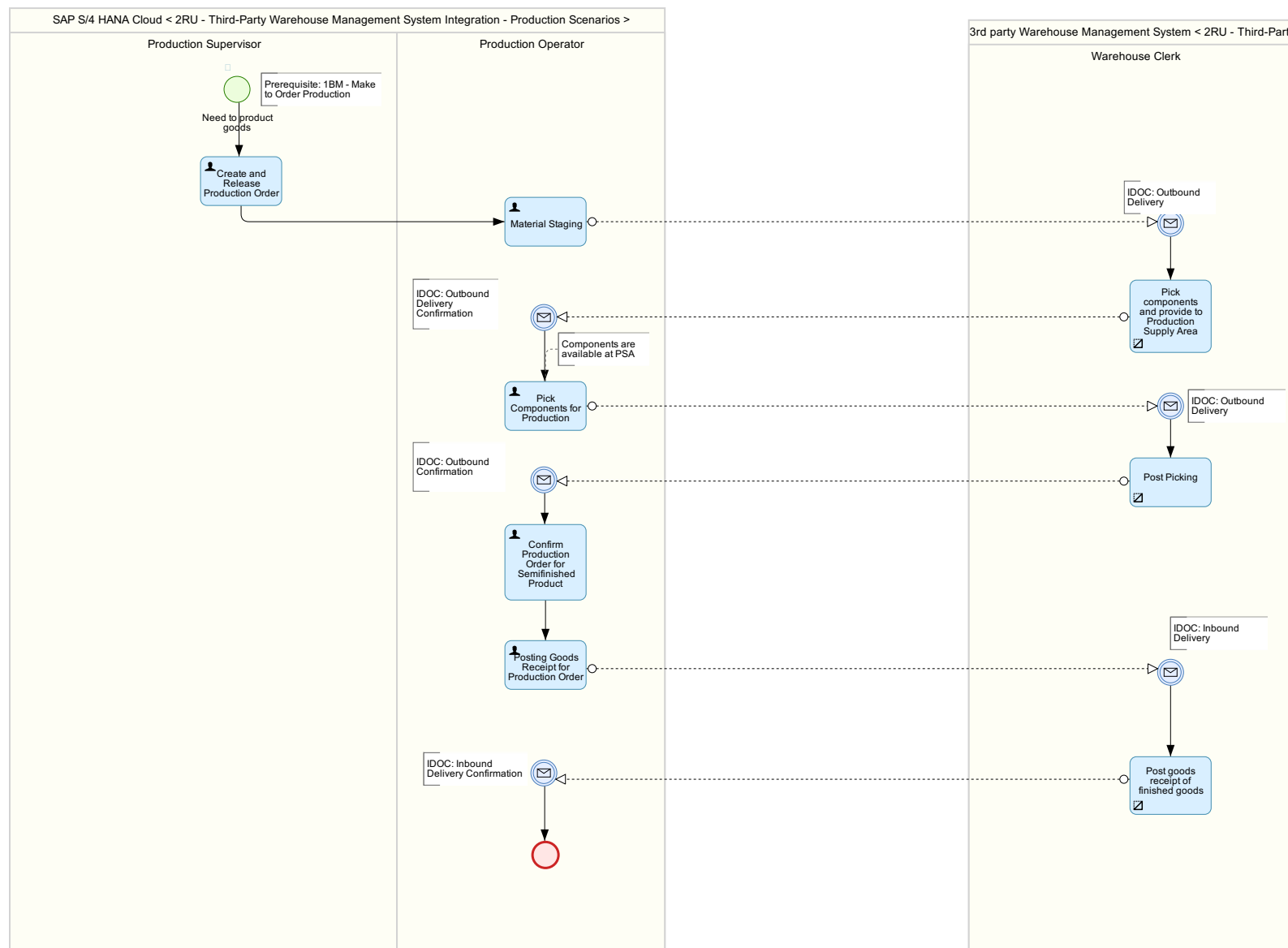


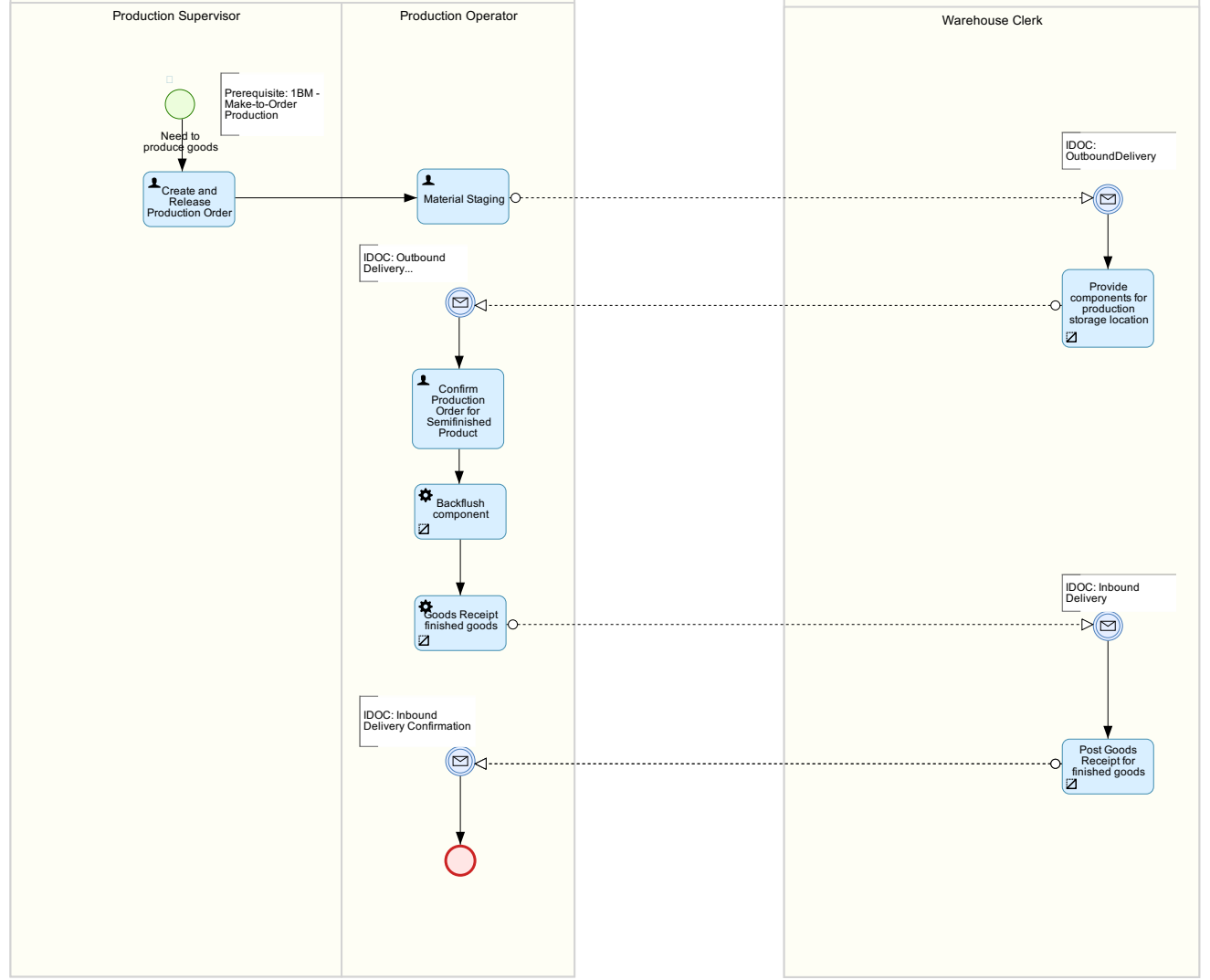
# Production Order Processing with Third-Party Warehouse Management (2RU)

This scope item supports the following processes:

## 01 - Production Scenario - no automatic backflush - all storage locations manage by 3rd-party WMS



## 02 - Production Scenario with automatic Backflush



03 - Process Order Processing - no automatic backflush - all storage locations manage by 3rd-party WMS

2RU - Production Order Processing with Third-Party Warehouse Management

Production Supervisor - Process Manufacturing

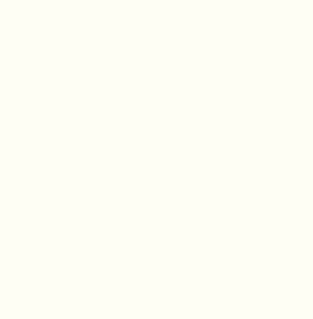
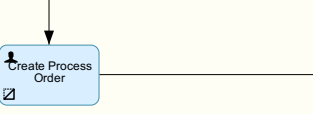
Production Operator - Process Manufacturing

Warehouse Clerk

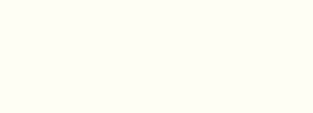
Third-Party Warehouse Management

Warehouse Clerk

Prerequisite: BJ8: Make-to-stock process manufacturing based on process order



Outbound Delivery Confirmation



Inbound Delivery Confirmation

